

Green Cushion Collection

Shwet Anand Exports





CLOSE UP

DETAILS:

Base fabric: Oatmeal

Technique : Printed with yarn embroidery using thick and thin dark green yarn and high cut tufting in light green color using thick and thin yarn

Edging : Knife edges



CLOSE UP

DETAILS:

Base fabric: Cotton casement

Technique: Low cut tufting done with dyeable yarn and embroidery done using the dyeable twisted cord on top of it then ombre dyed

Edging: 1 corner tassel on the top right corner.



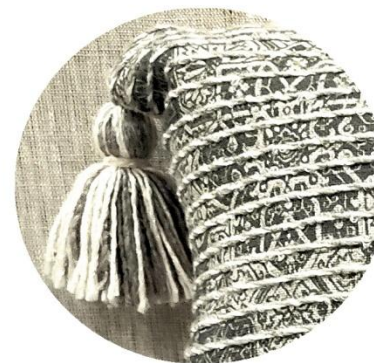
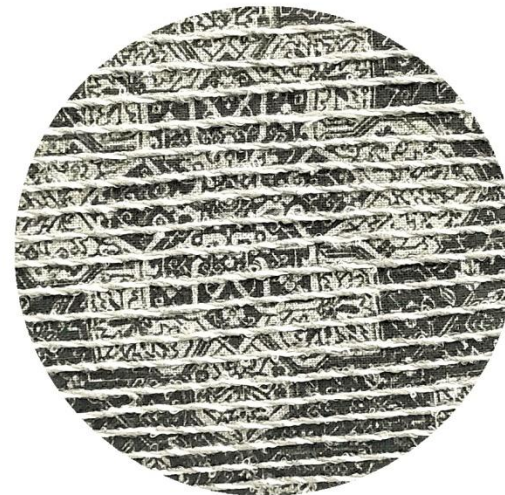
CLOSE UP

DETAILS:

Base fabric: Cotton Slub (S)

Technique: Yarn embroidery forming dark green motifs and mélange motifs are done using the same dark green yarn along with light green cut cut embroidery on top of it along with flat and braded yarn forming geometric pattern on one side and dark green tassels embroidered on the panels

Edging: Knife edges.



CLOSE UP

DETAILS:

Base fabric: Cotton Slub (S)

Technique: Printed with grey and white acrylic yarns entwined together and running across the print forming horizontal lines

Edging: Mélange tassels medium size on 4 corners



CLOSE UP

DETAILS:

Base fabric: Cotton Casement

Technique: Tufted with dyable yarn on the base and then tie dyed in single color

Edging: Knife edges



CLOSE UP

DETAILS:

Base fabric: 100% Cotton Woven

Technique: Dyed

Edging: 4 medium tassels on the corners



CLOSE UP

DETAILS:

Base fabric: Cotton Slub

Technique: Printed base with Cotton velvet appliqué on the bigger motif

Edging: Velvet chord piping on the edges.



CLOSE UP

DETAILS:

Base fabric: Linen

Technique: Motif embroidered using towel embroidery with acrylic yarn

Edging: Knife edges



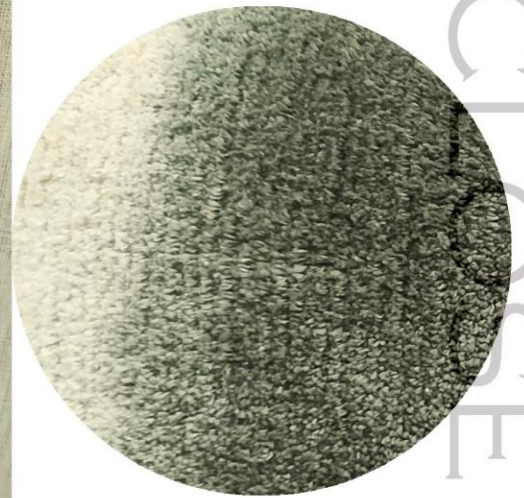
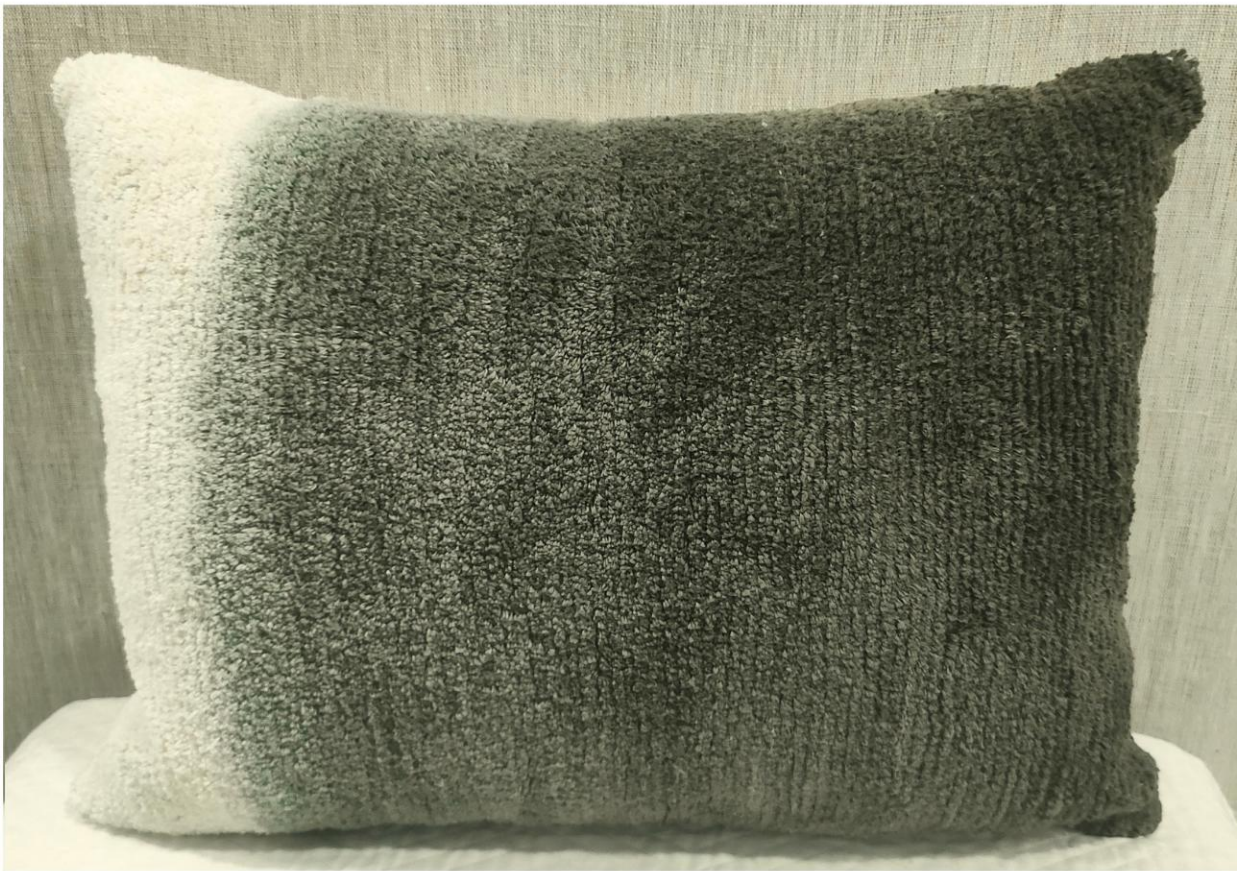
CLOSE UP

DETAILS:

Base fabric: Linen

Technique: Motif embroidered using tie dyed buckley yarn

Edging: Velvet chord piping on the edges



CLOSE UP

DETAILS:

Base fabric: Cotton Casement

Technique: Low pile tufting on the fabric using dye able yarn and then ombrey dyed.

Edging:Knife edges



CLOSE UP

DETAILS:

Base fabric:Fauxcl

Technique: Frayed appliqué with cotton slub(S) along with machine embroidery using different cotton yarns and various techniques

Edging:Cotton slub chord piping on the edges



CLOSE UP

DETAILS:

Base fabric: Linen

Technique: Crape fabric appliqué with frayed edges and off-white chord embroidery using thick and thin yarns on the alternate motifs.

Edging: Knife edges



CLOSE UP

DETAILS:

Base fabric: Oatmeal Fabric

Technique: Print with highlight hand knotting and embroidery technique done with single thread

Edging: Knife edges with 4 medium tassels on the corners.



CLOSE UP

DETAILS:

Base fabric: Cotton Casement

Technique: Tuffeting done in color block with a combination of both thick and thin yarns

Edging: Knife edges .



CLOSE UP

DETAILS:

Base fabric: Cotton Slub Medium quality

Technique: Chord embroidery using 2 different chords

Edging: Knife edges with white acrylic tassels on 2 corners.



CLOSE UP

DETAILS:

Base fabric: Cotton Velvet

Technique: Digital print front/back

Edging: Knife edges with exposed metallic zip closer on the side and 1 tassel on the hook.