



Surgical

Mall Of India Pvt. Ltd.



SURGICAL MALL OF INDIA (P.) LIMITED.

An ISO 9001:2015, ISO 13485:2012, ISO 1400:2015, OHSAS 18001:2007, BIFMA, GMP, CE Certified Company.

Manufacturers & Exporters of : - Hospital Furniture, Medical Equipments, Surgical Instruments, Laparoscopy & Endoscopy Equipments & Instruments, Scientific & Lab Equipments & Instruments, Physiotherapy Equipments, Hospital Linen, Oxygen Pipeline & All types of Hospital Goods For Turnkey Projects .

About us

Surgical Mall of India Pvt. Ltd. is one of the renowned company, established under the guidance of its Jalandhar-based parent company with 60+ years of experience in trading, import & export of medical instruments and equipment.

Our Offerings: Hospital Furniture(Semi Fowler Bed Manual & Electrical, Fowler Bed Manual & Electrical, ICU bed Manual & Electrical, Food Trolley, Patient Couch etc.), O.T. Light, O.T. Table, Modular Operation Theater, Oxygen Pipeline, Hospital Linen, Urology Instruments, Laparoscopy Instruments, General Surgery Instruments, Neurology Instruments, Gastrology Instruments, Endoscopy Equipment & Cameras, Patient Monitors, Syringe Pump, Wheel Chairs, Anaesthesia Machine, Anaesthesia Workstation, Autoclave Horizontal & Vertical, Formalin Chamber, Sterilisation Chamber, Scoop Stretcher, Ambulance Stretcher, C-pap Machine, B-pap Machine, E.C.G Machines, Rehabilitation Products.

Our Offices: Our head office is located in Delhi with regional offices in Bihar and Punjab. We also supply our products through recognized distributors all over India (like Tamil Nadu, Madhya Pradesh, Himachal Pradesh, Haryana etc.) to Government, Private Hospitals, Nursing Homes, Medical Colleges, etc.

Why Surgical Mall of India Pvt. Ltd. ?

We are one of the leading suppliers of medical device industry. We manufacture products as per the need and specifications of our customers and according to changing trends. The products we provide are CE and ISO 9001:2008 certified. We provide free one year service to our customers for the products purchased.

Thank you

Kamal Mahajan

Director, Surgical Mall of India Pvt. Ltd.



Surgical

Mall Of India Pvt. Ltd.

Index

- 1. ICU Electrical & manual Beds** **1**
- 2. ICU Beds & Fowler Beds** **2**
- 3. Fowler Beds** **3**
- 4. Semi Fowler Beds** **4**
- 5. Semi Fowler Bed & Plain Beds** **5**
- 6. Plain Bed & Delivery Beds** **6**
- 7. Baby Bed & O.T Tables** **7**
- 8. O.t C-arm Table & Delivery Table** **8**
- 9. Delivery Tables** **9**
- 10. O.T Halogen Lights** **10**
- 11. O.T LED Lights** **11**
- 12. Stretcher, Lockers, Attendant Tables, O.T Equipments, Ward Accessories, Trolleys, Chairs.** **12-18**
- 13. Patient Monitors, Cautery, E.C.G Machines, C.T & M.R.I Machines, X-Ray & Digital C.R Systems, C-Arm Machines, Ultrasound Machines.** **19-20**
- 14. General, Laparoscopy & Endoscopy Instruments & Equipments, Dental & Endoscopy Units, Laboratory Instruments & Equipments, Baby Warmer, Photo Therapy Incubator, Autoclaves Anesthesia Machines, Ventilator Machines, Physiotherapy, Mannequins, I.C.U Accessories & All Other Hospital Goods.** **21-24**

ICU Bed Five Functional Electric



- Frame made of strong rectangular CRCA pipe
- Uniformly perforated Four Sectional CRCA Sheet top
- Back-rest, knee-rest, trendelenburg/Reverse trendelenburg hi-low position obtained by electric actuator
- SS molded head and foot panels
- Aluminium collapsible side safety railing
- Bed mounted on 5 inch special casters, two with brakes
- One S.S.I.V rod
- Overall size: 220 L * 100 W * 60-80 H cm
- Pre-treated and Epoxy powder coated

ICU Bed Five Functional Electric (Eco Model)



- Frame made of strong rectangular CRCA pipe
- Uniformly perforated Four Sectional CRCA Sheet top
- Back-rest, knee-rest, trendelenburg/Reverse trendelenburg hi-low position obtained by electric actuator
- ABS molded head and foot panels
- Aluminium collapsible side safety railing
- Bed mounted on 5 inch special casters, two with brakes
- One S.S.I.V rod
- Overall size: 220 L * 100 W * 60-80 H cm
- Pre-treated and Epoxy powder coated



ICU Bed Five Functional Manual



- Frame made of strong rectangular CRCA pipe
- Uniformly perforated Four Sectional CRCA Sheet top
- Back-rest, knee-rest, trendelenburg/Reverse trendelenburg hi-low position obtained by crank mechanism
- ABS molded head and foot panels
- ABS side safety railing
- Bed mounted on 5 inch special casters, two with brakes
- One S.S.I.V rod
- Overall size: 220 L * 100 W * 60-80 H cm
- Pretreated and Epoxy powder coated



ICU Bed Five Functional Manual (Eco Model)



- Frame made of strong rectangular CRCA pipe
- Uniformly perforated Four Sectional CRCA Sheet top
- Back-rest, knee-rest, trendelenburg/Reverse trendelenburg hi-low position obtained by crank mechanism
- ABS molded head and foot panels
- Aluminium collapsible side safety railing
- Bed mounted on 5 inch special casters, two with brakes
- One S.S.I.V rod
- Overall size: 220 L * 100 W * 60-80 H cm
- Pretreated and Epoxy powder coated



- Frame made of strong rectangular CRCA pipe
- Uniformly perforated Four Sectional CRCA Sheet top
- Back-rest, knee-rest operated by Motor & Remote
- ABS molded head and foot panels
- Aluminium collapsible side safety railing
- Overall size: 220 L * 100 W * 60-80 H cm
- Pretreated and Epoxy powder coated
- Bed mounted on 5 inch special casters, two with brakes

Fowler Bed Electrical



Fowler Bed Super Deluxe



- Frame made of strong rectangular CRCA pipe
- Uniformly perforated Four Sectional CRCA Sheet top
- Back-rest, knee-rest obtained by crank mechanism
- ABS molded head and foot panels
- Overall size: 220 L * 100 W * 60-80 H cm
- Pretreated and Epoxy powder coated
- Bed mounted on 5 inch special casters, two with brakes



Fowler Bed Deluxe A



- Frame made of strong rectangular CRCA pipe
- Uniformly perforated Four Sectional CRCA Sheet top
- Back-rest, knee-rest obtained by crank mechanism
- Full SS molded head and foot panels
- Overall size: 220 L * 100 W * 60-80 H cm
- Pretreated and Epoxy powder coated



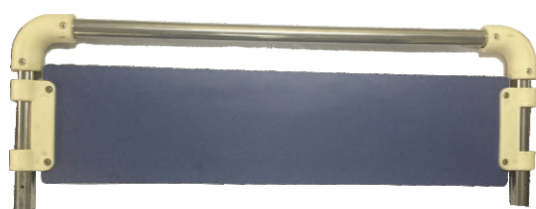
- Frame made of strong rectangular CRCA pipe
- Uniformly perforated Four Sectional CRCA Sheet top
- Back-rest, knee-rest obtained by crank mechanism
- SS cum sunmica molded head and foot panels
- Overall size: 220 L * 100 W * 60-80 H cm
- Pretreated and Epoxy powder coated

Fowler Bed Deluxe



- Frame made of strong rectangular CRCA pipe
- Uniformly perforated Four Sectional CRCA Sheet top
- Back-rest, knee-rest obtained by crank mechanism
- Powder Coated molded head and foot panels
- Overall size: 220 L * 100 W * 60-80 H cm
- Pretreated and Epoxy powder coated

Fowler Bed Eco



Semi Fowler Bed Electric

- Frame made of strong rectangular CRCA pipe
- Uniformly perforated Four Sectional CRCA Sheet top
- Back-rest obtained by Motor & Remote
- ABS molded head and foot panels
- Overall size: 220 L * 100 W * 60-80 H cm
- Pretreated and Epoxy powder coated



- Frame made of strong rectangular CRCA pipe
- Uniformly perforated Four Sectional CRCA Sheet top
- Back-rest obtained by crank mechanism
- ABS molded head and foot panels
- Overall size: 220 L * 100 W * 60-80 H cm
- Pretreated and Epoxy powder coated

Semi Fowler Bed Super Deluxe

- Frame made of strong rectangular CRCA pipe
- Uniformly perforated Four Sectional CRCA Sheet top
- Back-rest obtained by crank mechanism
- SS cum Sunmica molded head and foot panels
- Overall size: 220 L * 100 W * 60-80 H cm
- Pretreated and Epoxy powder coated

Semi Fowler Bed Deluxe

Semi Fowler Bed Eco Model**11013**

- Frame made of strong rectangular CRCA pipe
- Uniformly perforated Four Sectional CRCA Sheet top
- Back-rest obtained by crank mechanism
- Powder Coated molded head and foot panels
- Overall size: 220 L * 100 W * 60-80 H cm
- Pretreated and Epoxy powder coated

**11014**

- Frame made of strong rectangular CRCA pipe
- ABS molded head and foot panels
- Overall size: 220 L * 100 W * 60-80 H cm
- Pretreated and Epoxy powder coated

Plain Bed Super Deluxe**Plain Bed Deluxe****11015**

- Frame made of strong rectangular CRCA pipe
- SS molded head and foot panels
- Overall size: 220 L * 100 W * 60-80 H cm
- Pretreated and Epoxy powder coated



Plain Bed Eco Model



- Frame made of strong rectangular CRCA pipe
- Powder Coated molded head and foot panels
- Overall size: 220 L * 100 W * 60-80 H cm
- Pretreated and Epoxy powder coated

Pediatric Bed



- Main frame of rectangular pipe
- Perforated CRCA sheet top.
- Tubular head & foot bows of equal height with vertical tube supports on PVC stumps.
- Drop down type safety side railings are provided.
- Size: 137L x 76W x 60H cms.
- Finish Pre-treated & Epoxy Powder Coating finish.

Baby Bassinet



- Measurement: 870x530x780~980mm
- Aluminum column, height is adjustable
- Weighing system is optiona



O.T Table Electric**11019**

- SS five sectional top with large cut for perianal drainage tray, built Kidney Bridge
- Both side Controls
- Electrically Operated
- Heavy duty steel base with nylon wheels for easy mobility or stability with single action foot actuated floor locking
- Smooth gear mechanism to avail all operating positions
- 50, Thick electrically sealed mattress
- Provide with all sporting accessories
- Durable heavy duty leak proof Motors & Remote
- Provided with standard accessories

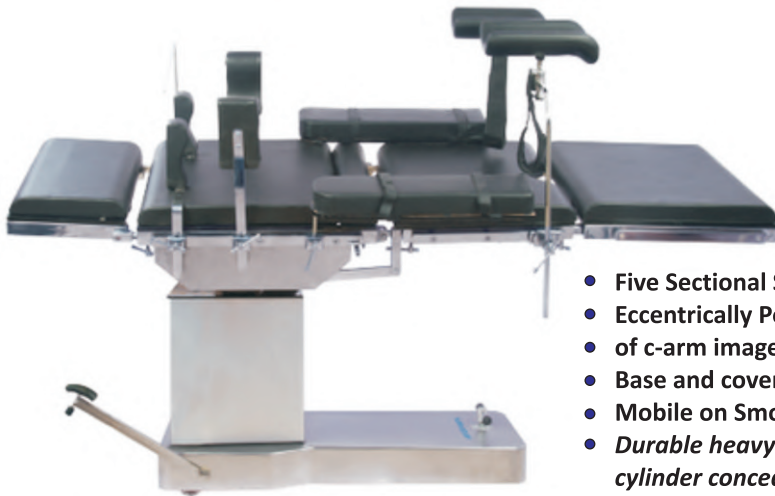
**11020**

- SS five sectional top with large cut for perianal drainage tray, built Kidney Bridge
- Both side Controls
- Hydraulic Operation tables
- Heavy duty steel base with nylon wheels for easy mobility or stability with single action foot actuated floor locking
- Smooth gear mechanism to avail all operating positions
- 50, Thick electrically sealed mattress
- Provide with all sporting accessories
- Durable heavy duty leak proof hydraulic pump with double cylinder concealed in central chamber
- Provided with standard accessories

OT Table Hydraulic**O.T Table C-Arm Electric****11021**

- Five Sectional Stainless Steel Radio Translucent Top.
- Eccentrically Positioned top for maximum access for movement of c-arm image intensifier.
- Base and cover made of heavy & hygienic stainless steel sheet.
- Mobile on Smooth running castors and floor locking system for stability.
- Remote Control system Offers Define Position:
 - Up and Down Position
 - Chair position for Seating operation

O.T Table C-Arm Hydraulic



 **11022**

- Five Sectional Stainless Steel Radio Translucent Top.
- Eccentrically Positioned top for maximum access for movement of c-arm image intensifier.
- Base and cover made of heavy & hygienic stainless steel sheet.
- Mobile on Smooth running castors and floor locking system for stability.
- Durable heavy duty leak proof hydraulic pump with double cylinder concealed in central chamber

 **11023**

- Overall approx. size: 187 L * 51 W * 81 H
- Adjustable backrest by gas spring system
- Two section foam padded, upholstered top
- Three drawers
- Three cabinets
- Tray for BP apparatus
- Pretreated and Epoxy powder coated
- Adjustable lithotomy poles with straps
- Also available in SS

Delivery Table



Delivery Table Three Fold



 **11024**

- Made In Three Sections, Adjustable back rest & Leg Section With lever mechanism to various Positions capable of tilting for obstetric and gynecological Use
- Epoxy Coated Tubular Steel frame
- Highly Coated mattress pad
- Supplied with two leg holders with canvas strap

Delivery Bed



11025

- Tubular Frame work mounted on 125mm dia castor two with brakes
- Three Section top made of MS Pipe with fix cushion mattress
- Height adjustment & back section adjustment through electric actuator system
- Leg end section can slide under the main section
- SS telescopic IV Rod



11026

- Three Sectional Stainless Steel Top, Back-rest adjustable by Ratchet
- Middle Section with "U" cut, leg section can slide under main frame
- Trendelenburg Position achieved with Pneumatic pump system
- Provide with head & side safety rails, SS Hand Grips
- Three sectional Matters, a pair of Lithotomy crutches & one IV Rod
- Sliding SS Douche Tray
- Legs Fitted on four rubber stumps
- Overall Extendable Size: 187 L x 96 W x 80 H C

Delivery Table Hydraulic Deluxe



Delivery Table Electric



11027

- The Table is design for women's obstetric & Gynecological Operation
- Operation Position - up / Down, adjustable back rest and reverse Position
- Main frame work Epoxy Powder coated Steel
- Supplied with two leg holders with canvas strap
- Adjustable legs support & Sliding Grip Holder
- Equipped with 8cm Thick High Quality Mattress

Mobile O.T Light**11028**

- Have daylight characters
- can be adjustable as per the operation requirements
- lights arms are made of stainless steel fitting
- Range of the color temp 4200 K \pm 300 as natural color tone
- Detachable handle for simplistic sterilization
- Diachronic reflectors & color correcting filters
- Metallic reflectors available

**O.T Light Single Dome Halogen****11029**

- lux intensity 90,000
- halogen bulb of 24v 150w
- 20" dome diameter
- Arms And all Accessories are made up of SS

O.T Twin Light Halogen**11030**

- lux intensity 1,80,000
- halogen bulb of 24v 150w
- 20" dome diameter each
- Arms And all Accessories are made up of SS
- Also available in diachloride & Aluminum Domes



LED O.T Light Single Dome**11031**

- intensity:120000 lux:10%
- size of led field:12-30 cm
- Number of Led:19x4 (multiple colour)
- With Brightness Controller (Feather Touch)
- Adjustable Focus

LED O.T Light Single Dome**11032**

- intensity:135000 +- 10%
- Number of LEDs :-51
- Size of led field : 18-35cm
- Adjustable Focus
- With anti hms system
- With feather touch controller

**LED O.T Light Twin Light****11033**

- intensity:2,20,000 lux
- size of led field:12-30 cm
- Number of Led:19x8 (multiple colour)
- With Brightness Controller (Feather Touch)
- Adjustable Focus

Stretcher Trolley



 **11034**

Stretcher Trolley Deluxe



 **11035**

Stretcher Trolley Cum Chair



 **11036**

Emergency Patient Trolley



 **11037**

Scrub Station With Sensor / Without Sensor



 **11039**

Ambulance Stretcher



 **11038**

Attendant Bed Cum Chair



11040

Blood Donating Chair



11042

Crash Cart With ABS Drawers



11044

Examination Table Plain



11041

Hospital Three Fold Screen



11043

Crash Cart With S.S Drawers



11045

Three Seater Chrome



 **11046**

Three Seater



 **11047**

Examination Couch Deluxe



 **11048**

Cylinder Trolley



 **11049**

Revolving Stool Super Deluxe



 **11050**

Revolving Stool Deluxe



 **11051**

Bed Side Locker S.S



Bed Side Locker Semi Deluxe



Bed Side Locker Deluxe



Bed Side Locker ABS Type



ABS Anesthetic Cart



Wheel Chair



Instrument Trolley All SS



 **11058**

Instrument Trolley Box Type



 **11059**

Instrument Trolley Powder Coated



 **11060**

Instrument Trolley Three Shelf



 **11061**

Dressing Trolley All S.S



 **11062**

E.C.G Trolley



 **11063**

Linen Trolley



 **11064**

Laparoscopy Trolley



 **11065**

Food Table



 **11066**

Bio-Waste Trolley



 **11067**

Mayo's Trolley



 **11068**

Instrument Cabinet



 **11069**

Spine Board



 **11070**

Scoop Stretcher



 **11071**

Tow Fold Strecher



 **11072**

Four Fold Stretcher



 **11073**

I.V Stand



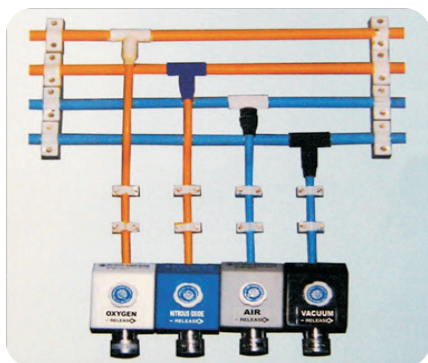
 **11074**

Kick Bucket



 **11075**

Oxygen Pipeline



 **11076**

Fogger Machine

 **11077**



Three Para Monitor



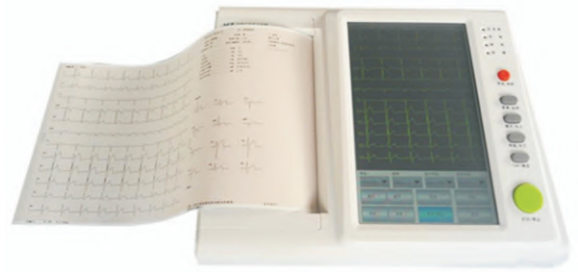
 **11078**

Five Para Monitor



 **11079**

E.C.G Machine



 **11080**

**New & Pre-Owned
Defibrillator**



 **11081**

**Cautery Machine
(300w / 400w / Sealer)**



 **11082**

Syringe Pump



 **11083**

**Fetal Monitors &
C.T.G Machines**



 **11096**

**Bi-pap & C-pap
Machines**



 **11097**

Oxygen Concentrators



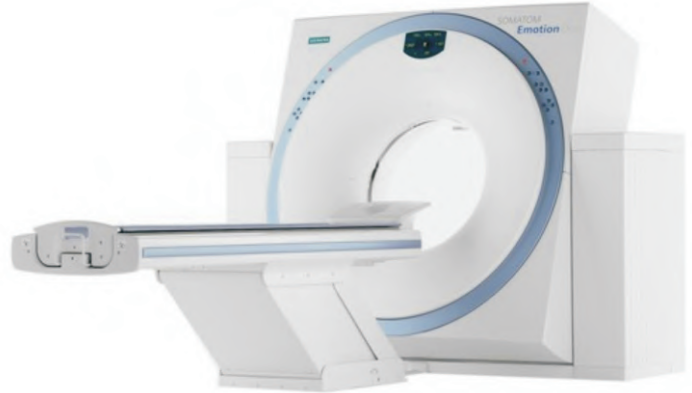
 **11098**

***New & Pre-Owned
C.T Scan Machines***



 **11099**

***New & Pre-Owned
M.R.I Scan Machines***



 **11100**

***New & Pre-Owned
C.T Scan Machines***



 **11101**

***New & Pre-Owned
C.R Systems***



 **11102**

***New & Pre-Owned
C-arm Machines***



 **11103**

***New & Pre-Owned
Diagnostic Ultrasound Scanners***



 **11104**

**T.C & General
Instruments**



 **11086**

**New & Pre-Owned
Endoscopy & Laparoscopy
Camera Units**



 **11084.a**

**New & Pre-Owned
Bubble C-pap**



 **11105**

**Laparoscopy & Endoscopy
Equipments & Instruments**



 **11084**

**New & Pre-Owned
Gastroscopy Units**



 **11084.b**

Dental Chair



 **11106**

**Microscopes, Centrifuge,
Incubator, Hot Air Oven
& All Scientific Goods**



Electrolyte Analyzer



Biochemistry Analyzer



Hematology Analyzer



**Arterial Blood Gas
Machine**



Elisa Reader & Washer



Baby Radiant Warmer



 11088

**LED Photo Therapy Machine
Single Surface / Double Surface**



 11089

Baby Incubator



 11107

**Horizontal & Vertical
Autoclave**



 11087

E.T.O Sterilizer



 11108

Suction Machines



 11109

**Anesthesia Workstation
& Trolleys**



 11090

Ventilator Machine



 11091

**Automatic External
Defibrillator**



 11109

Bed Headed Panels



 **11110**

O.T Pendant



 **11111**

I.C.U & Wards Curtaining



 **11112**

E.N.T & Neuro Microscopes



 **11113**

Physiotherapy Goods



 **11092**

General Surgical Goods



 **11093**

Mannequins & All Dummies



 **11094**

Dressing Drum, Kidney Tray & Instrument Tray

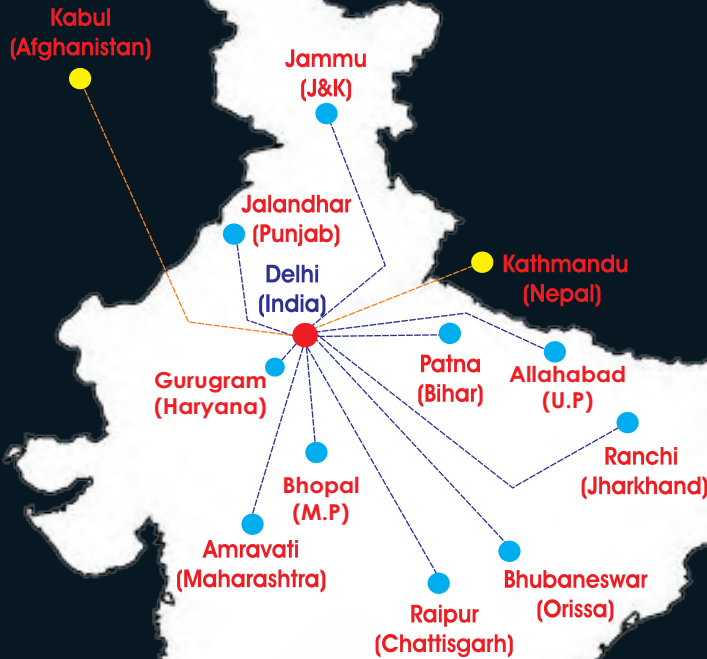
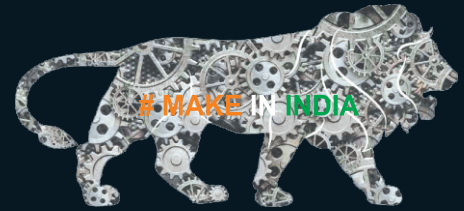


 **11095**

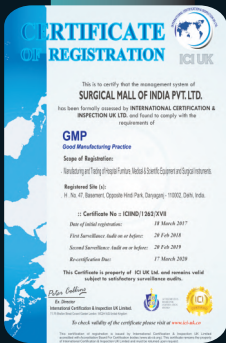
Ortho & Neuro Attachments



 **11114**



**One Stop
Solutions for
All Your Hospital
Needs**



SURGICAL MALL OF INDIA (P.) LIMITED.

An ISO 9001:2015, ISO 13485:2012, ISO 1400:2015, OHSAS 18001:2007, BIFMA, GMP, CE Certified Company.

Manufacturers & Exporters of :

Hospital Furniture, Medical Equipments, Surgical Instruments, Laparoscopy & Endoscopy Equipments & Instruments, Scientific & Lab Equipments & Instruments, Physiotherapy Equipments, Hospital Linen, Oxygen Pipeline & All types of Hospital Goods For Turnkey Projects .

Head Office : 47, Netaji Subhash Marg, Near Hindi Park, Darya Ganj, New Delhi-110002.
Works : Plot No. 157, Udyog Vihar, Phase 1, Gurugram (Gurgaon), Haryana-122016.
Tel : 011-41510046, 24 Hrs Helpline No. 011-45794844, M. +91- 9599081020-22.
For Export Oriented Queries : +91-7011783870, 9779901782, 7009746960.
E-mail : surgicalmallofindia@gmail.com,namankmahajan@gmail.com
Web : www.surgicalmallofindia.com