

Precision Manufacturing Company: Delivering Mechanical Excellence Since 2021

High-precision solutions from Kolhapur, western Maharashtra
region



Precision Manufacturing Company Overview

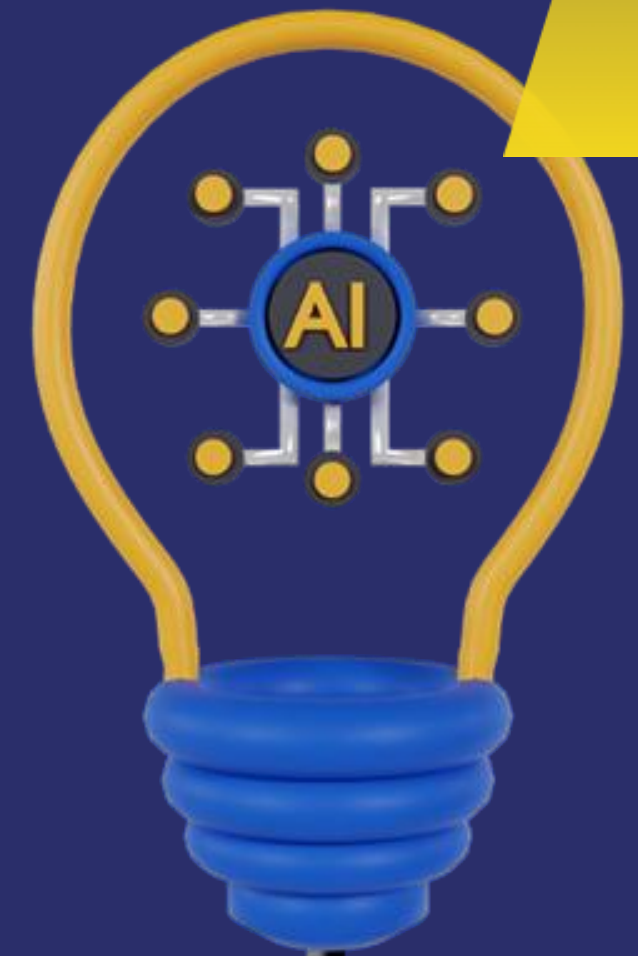
Micro-Enterprise Delivering High-Precision Mechanical Solutions with Agility

Micro-enterprise
specializing in **high-
precision manufacturing**
and **mechanical
solutions**

Registered under
UDYAM-MH-15-14665
and holds **GSTIN**
27BJCPP6203Q1ZS

Operates from **Plot No. A
25/26, C/O Jadhav Steel
Industries, M.I.D.C
Shiroli, Kolhapur,
Maharashtra**

Firm structure enables
agility and **personalized
customer solutions** in a
competitive industrial
landscape

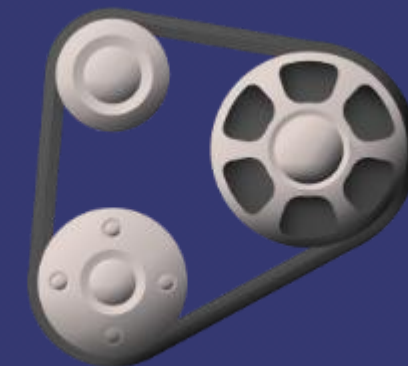
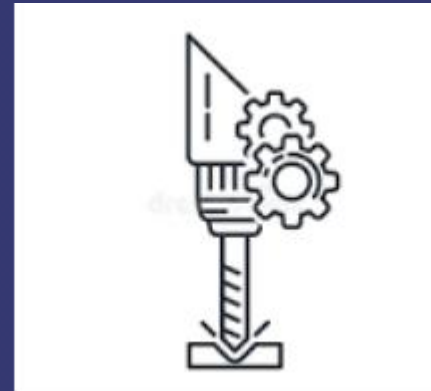


Solutions offered

Micro-Enterprise Delivering High-Precision Mechanical Solutions with Agility

We specialise and provide multiple solutions under a single roof

- A single umbrella for complete process of metal forming , roughing to final finishing using conventional and CNC/VMC services.
- Machining of heavy components such as pinions, hubs from sugar cane industry
- Machining of jobs from pumps and valves industry
- Formation of castings in a foundry using partner services
- Machining of precision metal components using CNC/VMC machines using partner services



Driving Innovation with Clear Vision and Mission

Leading Mechanical Solutions through Quality, Sustainability, and Customer Focus



Vision: Become a leader in innovative mechanical solutions by delivering superior quality and sustainable practices that empower industries and enhance daily life



Commit to exceeding customer expectations through unwavering focus on **quality, reliability,** and **safety**



Drive continuous innovation to develop tailored mechanical solutions for diverse industrial needs



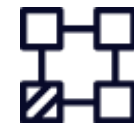
Maintain sustainable operations that minimize environmental impact and promote long-term growth



Provide dedicated customer support fostering strong, long-term industrial partnerships

Precision Equipment and Skilled Workforce

Optimized Capacity for High-Accuracy
Manufacturing



Operates a conventional Vertical Turning Lathe (VTL) with a 1500 mm swing, 1300 mm chuck diameter, and 1000 mm height

Operates a conventional boring machine with bore size of 100 mm



3-shift operation enhances production capacity and ensures continuous workflow



Skilled workforce includes 1 Engineer, 3 skilled workers, 1 helper, and 1 unskilled worker supporting operations



Focus on high-precision vertical turning for complex mechanical components with strict dimensional accuracy

Precision in Quality Assurance Instruments

Calibrated tools ensuring exact measurements every six months

Instrument	Specification	Measurement Purpose
Vernier Calipers	300 mm and 600 mm	Precise linear external and internal measurements
Micrometers	Standard sizes	High-accuracy thickness and diameter measurements
Depth Gauges	Various ranges	Accurate depth measurements
Height Gauges	Standard sizes	Precise vertical dimension measurements
Dial Stands	Standard	Stable reference for dial gauge measurements
Bore Dial Gauges	Standard	Internal diameter and bore measurements
Slip Gauges	Standard sets	Calibration and verification of linear dimensions

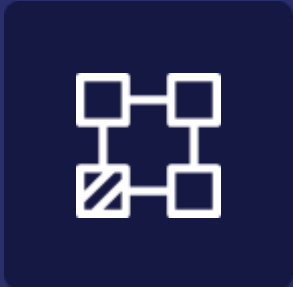
Strategic Partner Profiles Driving Quality

Leveraging specialized expertise to
strengthen supply chain and product
reliability

Shri Swami Samarth Metals (SSM): Expert in high-quality SG Iron and Cast-iron castings with a 150 kg induction furnace , 150 kg magnesium treatment ladle and in-house core overs, Pin lifting machine and metallurgical testing ensuring reliable components like bush crank shafts, flange yoke, bearing cap. , Bush castings etc.

Creative Industries: Provides comprehensive manufacturing support for pumps, valves, and automotive parts using diverse materials and advanced techniques using 03 CNC Machines and 05 VMC Machines
Technical specifications as below:

MACHINE	MAKE	SPECIFICATIONS
CNC – 03 Nos	ASKAR MICRONS Spinner 15 DX	Max Turning Dia 350 mm, Max Turning Length 500 mm, Chuck Size 250 mm (10")
VMC – 04 Nos	AMS MCV 450	Stroke - X 800, Y 450, Z 500 Table size -1000 x 450 Pallet - 01 No, Spindle Taper –BT-40 ATC-24 Turret – 8 station
VMC – 01 No	AMS MCV 450 Pallet Changer	Stroke - X 800, Y 450, Z 500 Stroke - X 800, Y 450, Z 500 Table size -1000 x 450 Pallet - 01 No, Spindle Taper –BT-40 ATC-24



Connect and Transact with Precision Manufacturing

Direct Contact and Reliable Banking for Seamless Business operations

Reach Precision Manufacturing
Company via email at
PrecisionMfgCo@gmail.com

Banking transactions handled through
**Bank of Maharashtra, Mahadik
Vasahat Branch, Kolhapur**

Account Name: **Precision
Manufacturing Company**
A/c number : **60383294417**
with IFSC Code **MAHB0000844**

Call us at **+91 9152130521** or **+91
9922926289** for inquiries and business

Sample products delivered by us

Components delivered by Precision Manufacturing company

