



**CONNECTED**

# About Connected Shapewear

**With every hug, the soul heals and the body blooms. Let us help you in getting in tune with who you are, who you are becoming, and all you're yet to be.**

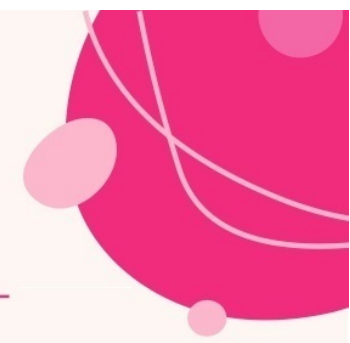
Connected is a socially-conscious and a body-friendly brand that celebrates the natural beauty of human anatomy. We believe in making people comfortable and happy in their own skin. The range of skin-hugging, breathable shapewear and undergarments that we offer, masterfully smoothens the natural curves while enhancing posture and abdominal muscles. Our sustainable products delicately aid men & women, alike, in feeling more aligned, confident and connected to themselves, irrespective of their shapes and sizes.

Connected Innerwears are designed to enable self-love while getting over the pressure to look a certain way. Matching our core values of resilience and empowerment, our products pass the test of time. They boost self confidence and acceptance of oneself. After all, perfection shouldn't exist in a world full of individuals.

## Our Philosophy

The skin & the soul should always be in sync with each other. And self-love brings that balance to life. Thus, all our products endorse body positivity, while celebrating the most natural and effortless way of being, no matter the size or the shape. We envision to help people embrace themselves and be truly connected from within. Our products let the wearers feel more confident and in love with their bodies.





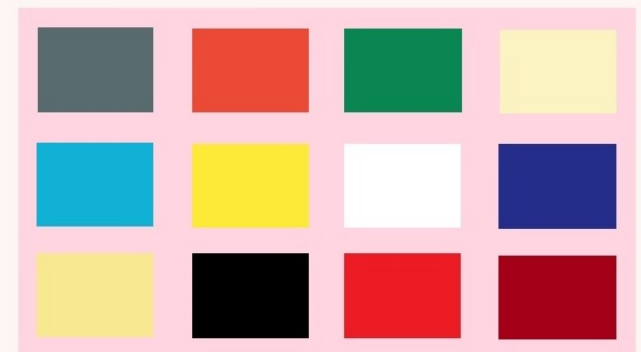
# Drawstring Saree Shapewear

## About this item

- Hour-glass fit
- A side slit for easy movement
- Seamless construction
- Lightweight & breathable fabric
- 12h comfort & contouring
- High-waist design = no muffine top
- stretchable fabric
- Ezo free dyes

## Size Chart

| Sizes | Waist                  | Hip                     | Sizes | Waist            | Hip                      |
|-------|------------------------|-------------------------|-------|------------------|--------------------------|
| S/M   | 28-30 inch<br>71-76 cm | 35-38 inch<br>89-91 cm  | 2XL   | 36 inch<br>91 cm | 43-44 inch<br>109-112 cm |
| L/XL  | 32-34 inch<br>81-86 cm | 39-42 inch<br>99-107 cm | 3XL   | 38 inch<br>97 cm | 45-47 inch<br>109-114 cm |





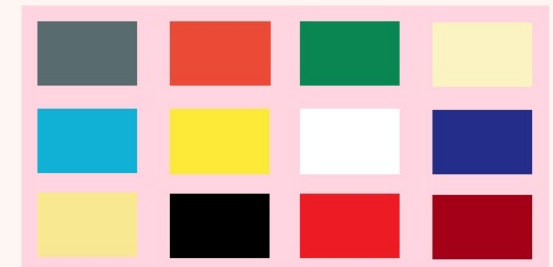
# Saree Shapewear

## About this item

- Hour-glass fit
- A side slit for easy movement
- Seamless construction
- Lightweight & breathable fabric
- 12h comfort & contouring
- High-waist design = no muffine top
- stretchable fabric
- Ezo free dyes

## Size Chart

| Sizes | Waist                  | Hip                     | Sizes | Waist            | Hip                      |
|-------|------------------------|-------------------------|-------|------------------|--------------------------|
| S/M   | 28-30 inch<br>71-76 cm | 35-38 inch<br>89-91 cm  | 2XL   | 36 inch<br>91 cm | 43-44 inch<br>109-112 cm |
| L/XL  | 32-34 inch<br>81-86 cm | 39-42 inch<br>99-107 cm | 3XL   | 38 inch<br>97 cm | 45-47 inch<br>109-114 cm |







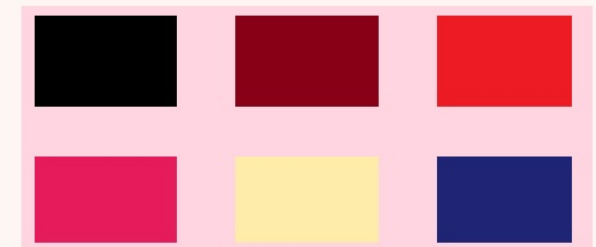
# Skirt Shapewear

## About this item

- Hour-glass fit
- Suitable for dresses & skirts
- Seamless construction
- Lightweight & breathable fabric
- 12h comfort & contouring
- High-waist design = no muffin top
- stretchable fabric
- Eco free dyes

## Size Chart

| Sizes | Waist                  | Hip                     | Sizes | Waist            | Hip                      |
|-------|------------------------|-------------------------|-------|------------------|--------------------------|
| S/M   | 28-30 inch<br>71-76 cm | 35-38 inch<br>89-91 cm  | 2XL   | 36 inch<br>91 cm | 43-44 inch<br>109-112 cm |
| L/XL  | 32-34 inch<br>81-86 cm | 39-42 inch<br>99-107 cm | 3XL   | 38 inch<br>97 cm | 45-47 inch<br>109-114 cm |





# Tummy Thighs Mens Shapewear

## About this item

- High-waist Y-shaped boxer for full abdomen, thighs & back making you look slimmer
- Intended compression for a perfect look
- Seamless construction
- Lightweight & breathable fabric
- All-day comfort & contouring
- stretchable fabric
- Ezo free dyes

## Size Chart

| Sizes | Waist                  | Hip                     |
|-------|------------------------|-------------------------|
| S/M   | 28-30 inch<br>71-76 cm | 35-38 inch<br>89-91 cm  |
| L/XL  | 32-34 inch<br>81-86 cm | 39-42 inch<br>99-107 cm |

| Sizes | Waist            | Hip                      |
|-------|------------------|--------------------------|
| 2XL   | 36 inch<br>91 cm | 43-44 inch<br>109-112 cm |
| 3XL   | 38 inch<br>97 cm | 45-47 inch<br>109-114 cm |





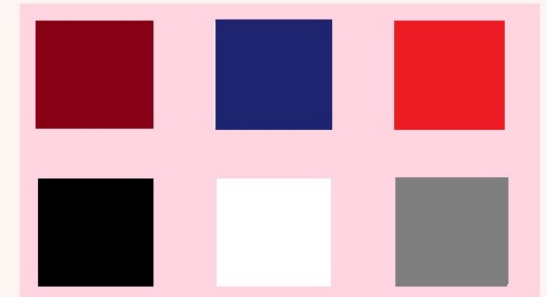
# Tummy Thighs Shapewear

## About this item

- High-waist thigh shaper for full abdomen, thighs & rear shaping
- Seamless construction
- Lightweight & breathable fabric
- All-day comfort & contouring
- stretchable fabric
- Ezo free dyes

## Size Chart

| Sizes | Waist                  | Hip                     | Sizes | Waist            | Hip                      |
|-------|------------------------|-------------------------|-------|------------------|--------------------------|
| S/M   | 28-30 inch<br>71-76 cm | 35-38 inch<br>89-91 cm  | 2XL   | 36 inch<br>91 cm | 43-44 inch<br>109-112 cm |
| L/XL  | 32-34 inch<br>81-86 cm | 39-42 inch<br>99-107 cm | 3XL   | 38 inch<br>97 cm | 45-47 inch<br>109-114 cm |







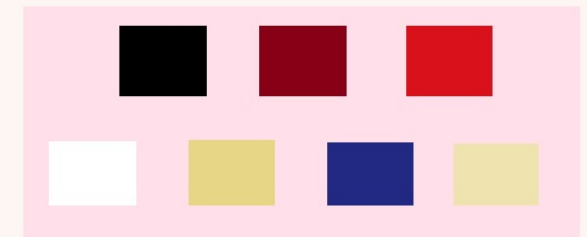
# Tummy Tucker Brief Shapewear

## About this item

- High waist brief
- Seamless construction
- Lightweight & breathable fabric
- All-day comfort & contouring
- High-waist design = no muffine top
- 16 way stretch
- Ezo free dyes

## Size Chart

| Sizes | Waist                  | Hip                     | Sizes | Waist            | Hip                      |
|-------|------------------------|-------------------------|-------|------------------|--------------------------|
| S/M   | 28-30 inch<br>71-76 cm | 35-38 inch<br>89-91 cm  | 2XL   | 36 inch<br>91 cm | 43-44 inch<br>109-112 cm |
| L/XL  | 32-34 inch<br>81-86 cm | 39-42 inch<br>99-107 cm | 3XL   | 38 inch<br>97 cm | 45-47 inch<br>109-114 cm |





# Tummy Tucker Mens Shapewear

## About this item

- High-waist Y-shaped boxer for full abdomen, thighs & back making you look slimmer
- Intended compression for a perfect look
- Seamless construction
- Lightweight & breathable fabric
- All-day comfort & contouring
- stretchable fabric
- Ezo free dyes

## Size Chart

| Sizes | Waist                  | Hip                     |
|-------|------------------------|-------------------------|
| S/M   | 28-30 inch<br>71-76 cm | 35-38 inch<br>89-91 cm  |
| L/XL  | 32-34 inch<br>81-86 cm | 39-42 inch<br>99-107 cm |

| Sizes | Waist            | Hip                      |
|-------|------------------|--------------------------|
| 2XL   | 36 inch<br>91 cm | 43-44 inch<br>109-112 cm |
| 3XL   | 38 inch<br>97 cm | 45-47 inch<br>109-114 cm |



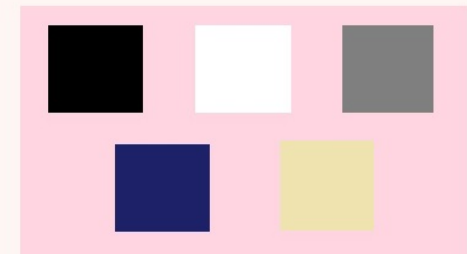


# Arm Sleeves

---

## About this item

- Ultimate UV protection Protect for your arms from aging, sun-burn more than arm-cooling
- High quality, breathable, super stretchable fabric
- The material releases sweat and water quickly to allow fast drying
- Free size with ergonomic fit allows free arm movement with proper compression and support during activities
- Ezo free dyes





# Strapless Tube Bra

## About this item

- Non-Padded, non-wired & strapless tube bra
- Seamless construction
- Lightweight & breathable fabric
- Elastic at the top & bottom for a secure fit
- All-day comfort & contouring
- stretchable fabric
- Ezo free dyes

## Size Chart

| Sizes | Bust                    | Sizes | Bust                     |
|-------|-------------------------|-------|--------------------------|
| S/M   | 35-37 inch<br>84-94 cm  | 2XL   | 41-43 inch<br>104-109 cm |
|       | 37-41 inch<br>94-104 cm |       |                          |





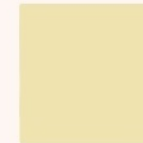
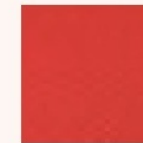
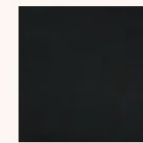
# Strapless Tube Top

## About this item

- Non-Padded, non-wired & strapless tube top
- Seamless construction
- Lightweight & breathable fabric
- Elastic at the top & bottom for a secure fit
- All-day comfort & contouring
- stretchable fabric
- Ezo free dyes

## Size Chart

| Sizes | Bust                    | Sizes | Bust                     |
|-------|-------------------------|-------|--------------------------|
| S/M   | 35-37 inch<br>84-94 cm  | 2XL   | 41-43 inch<br>104-109 cm |
|       | 37-41 inch<br>94-104 cm |       |                          |







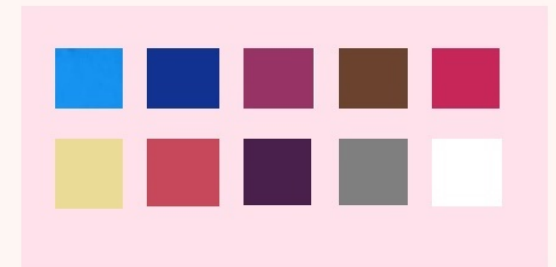
# Sports bra

## About this item

- Non-Padded, non-wired
- Seamless construction
- Lightweight & breathable fabric
- All-day comfort & contouring
- stretchable fabric
- Ezo free dyes

## Size Chart

| Sizes | Bust                    | Sizes | Bust                     |
|-------|-------------------------|-------|--------------------------|
| S/M   | 35-37 inch<br>84-94 cm  | 2XL   | 41-43 inch<br>104-109 cm |
|       | 37-41 inch<br>94-104 cm |       |                          |





# Dry fit Sports bra

## Double layer

### About this item

- Non-Padded, non-wired
- Seamless construction
- Lightweight & breathable fabric
- All-day comfort & contouring
- stretchable fabric
- Ezo free dyes

### Size Chart

| Sizes | Bust                    | Sizes | Bust                     |
|-------|-------------------------|-------|--------------------------|
| S/M   | 35-37 inch<br>84-94 cm  | 2XL   | 41-43 inch<br>104-109 cm |
|       | 37-41 inch<br>94-104 cm |       |                          |





**CONNECTED**<sup>TM</sup>

Connected shapewear & innerwear are like self-hugs, deeply fulfilling and innately beautiful. Check out the spectrum of our sustainable, resilient and durable products.