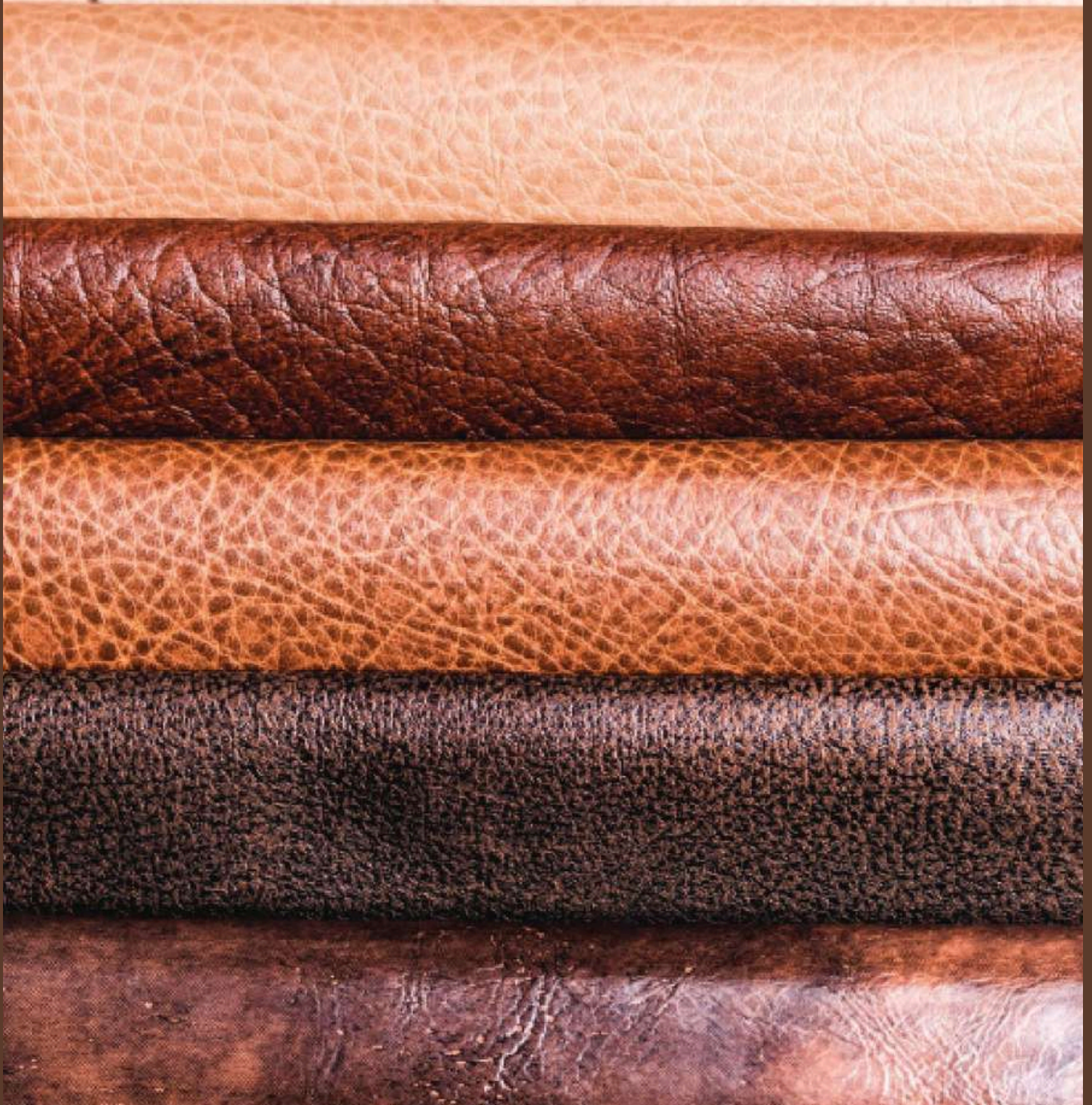




**ANFAAL**  
INTERNATIONAL



# ABOUT US

We are over a thirty years old leather tannery dealing in export for over a decade. We specialize in the manufacture of buffalo split leather, buffalo full grain leather, heel grip leather, sole leather, harness leather, cow split leather, antique leather and so on. Our leather is mainly used in the production of shoes, belts, handbags, gloves, seat cushion, tool bags, watch straps, etc.

Our factory is located in the leather capital of India, Kanpur, which boasts of the best leather technicians in the country. There is convenient transportation, logistics and huge resources of raw hides and tanning techniques.

We take particular care in the production of leather thus maintaining high standards and also testing it using prevalent testing technologies like chromium VI, lead, AZO, PCP formaldehyde, etc. To better utilize our strong resource in leather, we also manufacture bags, belts, aprons and saddles.

Our company adhere to the principle of "Quality First". To provide customers with high quality and affordable products, we conduct strict control of the leather colors, touch, face, trimming and thickness etc. To us customer satisfaction is the primary focus and we live by it.



# BUFFALO LEATHER

Buffalo leather, also known as English Saddle Leather, is sourced from domestic buffalo hide. The leather has a distinctive grain in comparison to cowhide leather or sheep leather. It comes in a variety of colors and finishes and is often characterized by the rich and deep tones of the hide. Buffalo leather has a striking appearance and can last for a long time with proper care and maintenance. Buffalo leather also develops a natural rich patina as it ages over time, enhancing the beauty and appeal of the leather products. Buffalo leather can be processed using either the chrome tanning technique or a chrome-free method that is more environmentally friendly. However, chrome-free tanning can take more time to process buffalo leather than chrome-based tanning. In both of these processes, buffalo hide is not stretched during the tanning process. This makes it more resistant to tearing when compared to cowhide leather or sheepskin leather.

Generally, buffalo hide has an epidermal layer that is three times thicker than cowhide, making it extremely durable and even stronger when compared to leather sourced from other animal skins. However, buffalo leather can also be very soft and flexible and can be used for a variety of women's leather clothing whether it is a jacket, skirt, legging, or pants. Below is an overview of the different types of buffalo leather that are in use today.



# BELTING LEATHERS

These are Veg Tan leather with rectangle shape having thickness of more than 3mm.

## 1. BELTING LEATHER (GRAIN)

a. 3.5+ mm

## 2. BELTING LEATHER (SPLIT)

a. 3+ mm

b. 2.4-2.6 mm

c. 1.8-2.0 mm

d. 1.6-1.8 mm



Article No. AIBL -8001



Article No. AIBL -8002



Article No. AIBL -8003



Article No. AIBL -8004



Article No. AIBL -8005



Article No. AIBL -8006



Article No. AIBL -8007



Article No. AIBL -8007

# CRAZY HORSE LEATHER

Crazy Horse Leather is a unique kind of leather that really stands out from the rest. It is made from full grain cowhide leather which means it is of the highest quality and will stand up to plenty of abuse.

## 1. Crazy Horse Leather (Grain)

- a. 1.2-1.4 mm
- b. 1.4-1.6 mm
- c. 1.6-1.8 mm
- d. 1.8-2.0 mm



Article No. AICZ - 9001



Article No. AICZ - 9002



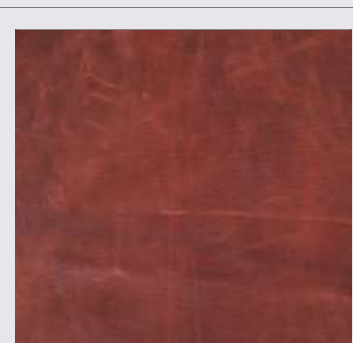
Article No. AICZ - 9003



Article No. AICZ - 9004



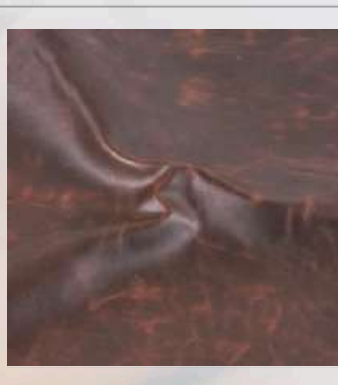
Article No. AICZ - 9005



Article No. AICZ - 9006



Article No. AICZ - 9007



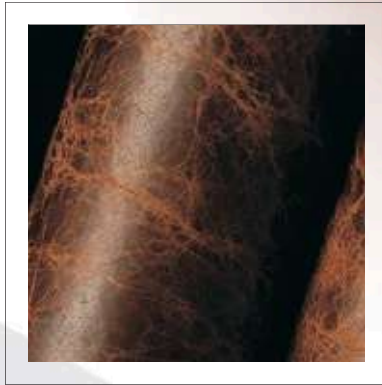
Article No. AICZ - 9008



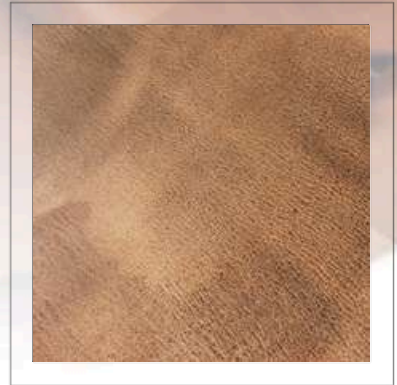
Article No. AICZ - 9009



**Article No. AICZ - 9010**



**Article No. AICZ - 9011**



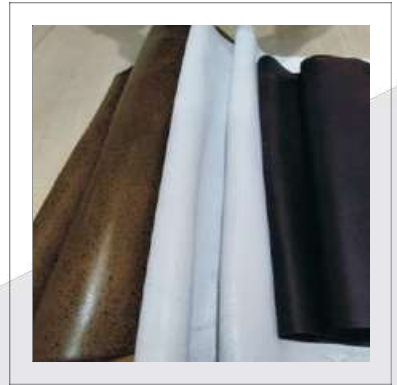
**Article No. AICZ - 9012**



**Article No. AICZ - 9013**



**Article No. AICZ - 9014**



**Article No. AICZ - 9015**



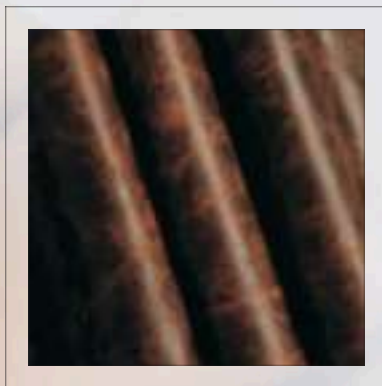
**Article No. AICZ - 9016**



**Article No. AICZ - 9017**



**Article No. AICZ - 9018**



**Article No. AICZ - 9019**



**Article No. AICZ - 9020**

# HOT WAX

## Hot Wax/Oil

a.1.2-1.4 mm

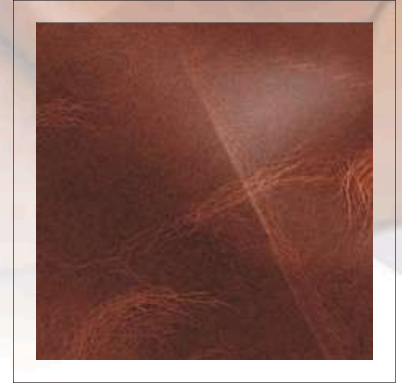
b.1.4-1.6 mm

c.1.6-1.8 mm

d.1.8-2.0 mm



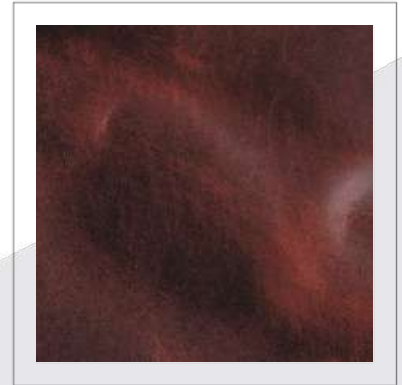
Article No. AIHT - 10001



Article No. AIHT - 10002



Article No. AIHT - 10003



Article No. AIHT - 10004



Article No. AIHT - 10005



Article No. AIHT - 10006

# DRY MILLED LEATHERS

The leather is tumbled in a large drum to produce softer more pliable leather and this process can create a slight "pebble" appearance in the surface of the leather.

## 1. Dry Milled Leather (Grain)

- a. 1.2-1.4 mm
- b. 1.4-1.6 mm
- c. 1.6-1.8 mm
- d. 1.8-2.0 mm



Article No. AIDM - 11001



Article No. AIDM - 11002



Article No. AIDM - 11003



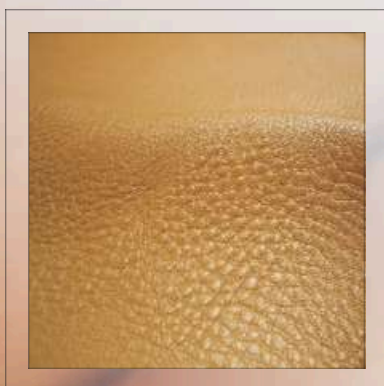
Article No. AIDM - 11004



Article No. AIDM - 11005



Article No. AIDM - 11006



Article No. AIDM - 11007



Article No. AIDM - 11008



Article No. AIDM - 11009

# FULL GRAIN LEATHERS

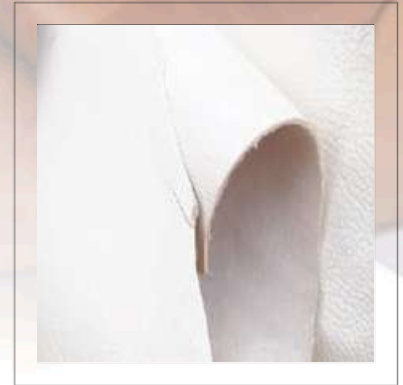
Full grain leather is the highest quality grade of leather money can buy. It comes from the top layer of the hide and includes all of the natural grain

## Full Grain Aniline/Shrunk Finish leather

- a. 1.2-1.4 mm
- b. 1.4-1.6 mm
- c. 1.6-1.8 mm
- d. 1.8-2.0 mm



Article No. AIFG - 12001



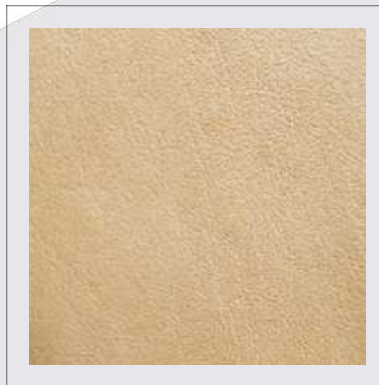
Article No. AIFG - 12002



Article No. AIFG - 12003



Article No. AIFG - 12004



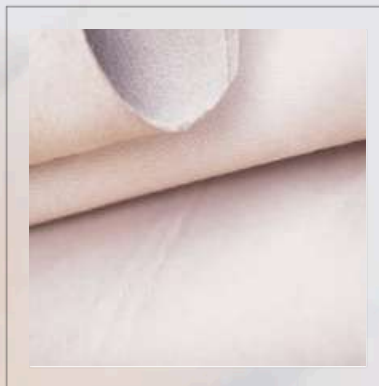
Article No. AIFG - 12005



Article No. AIFG - 12006



Article No. AIFG - 12007



Article No. AIFG - 12008



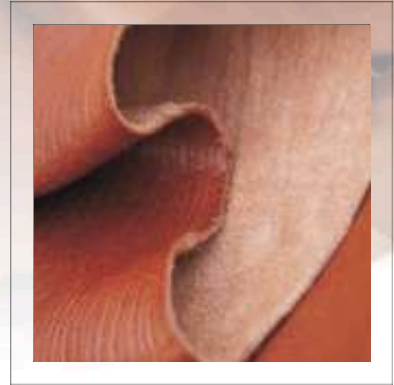
Article No. AIFG - 12009



**Article No. AIFG - 12010**



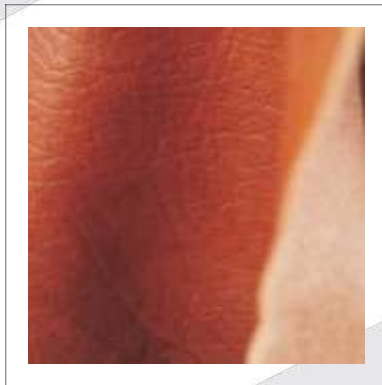
**Article No. AIFG - 12011**



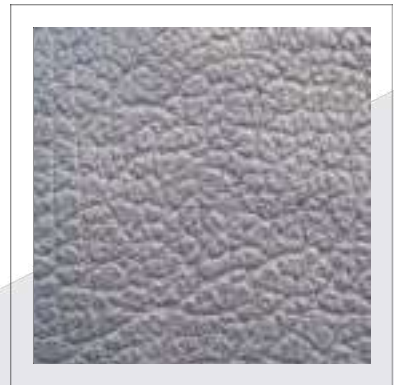
**Article No. AIFG - 12012**



**Article No. AIFG - 12013**



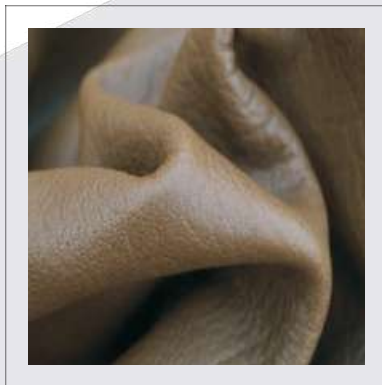
**Article No. AIFG - 12014**



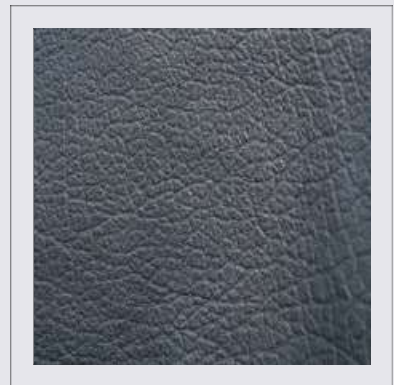
**Article No. AIFG - 12015**



**Article No. AIFG - 12016**



**Article No. AIFG - 12017**



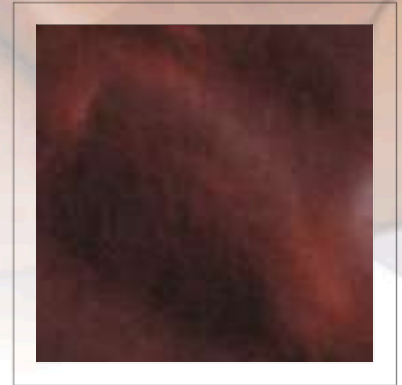
**Article No. AIFG - 12018**

# PULL UP LEATHERS

Modern pull up leather is an oil and wax-rich leather that, changes colour slightly due to its oils and waxes being mobilised when it is pulled up, flexed or scratched. (It's also referred to as 'pull up effect')



Article No. AIPL - 14001



Article No. AIPL - 14002

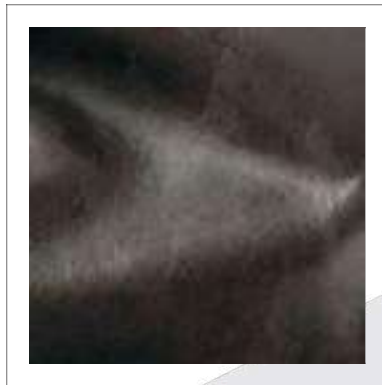
## Buffalo Pull Up Leather (Hot Wax/Oil)

a.1.2-1.4 mm

b.1.4-1.6 mm

c.1.6-1.8 mm

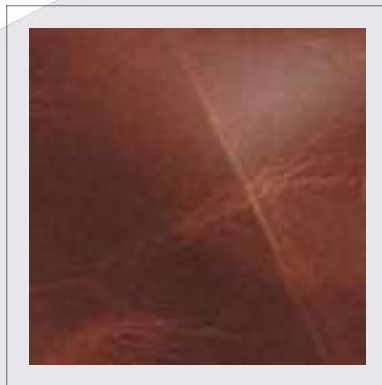
d.1.8-2.0 mm



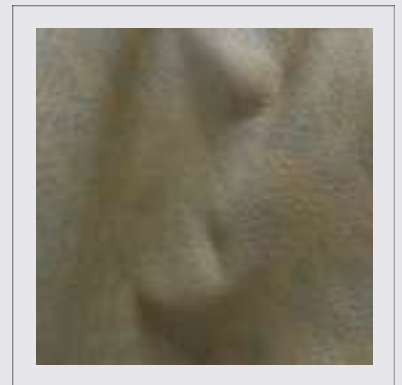
Article No. AIPL - 14003



Article No. AIPL - 14004



Article No. AIPL - 14005



Article No. AIPL - 14006

# SUEDE LEATHERS

## Buffalo Split Suede Leather

a. 0.9-1.0 mm

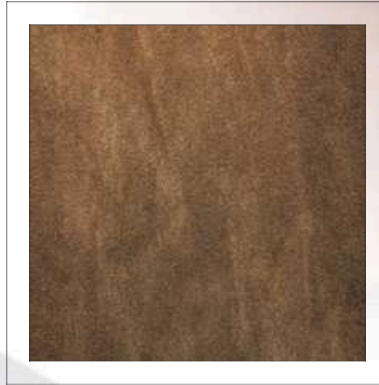
b. 1.0-1.2 mm

c. 1.2-1.4 mm

d. 1.4-1.6 mm

e. 1.6-1.8 mm

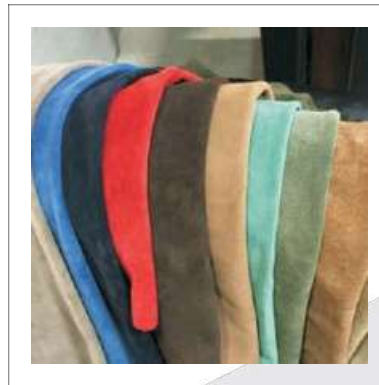
f. 1.8-2.0 mm



Article No. AISL - 15001



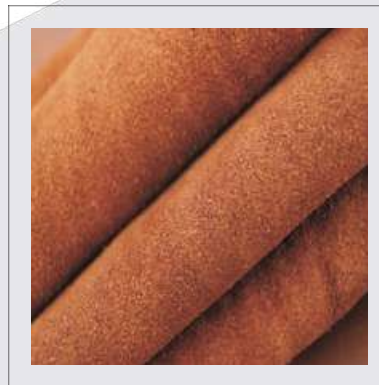
Article No. AISL - 15002



Article No. AISL - 15003



Article No. AISL - 15004



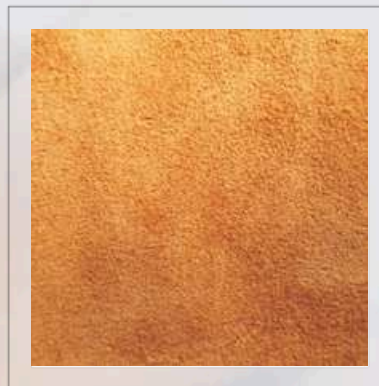
Article No. AISL - 15005



Article No. AISL - 15006



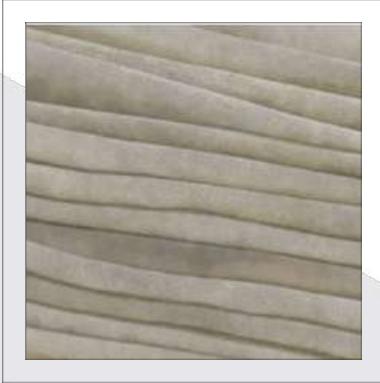
Article No. AISL - 15007



Article No. AISL - 15008



Article No. AISL - 15009



**Article No. AISL - 15010**



**Article No. AIFL - 15011**



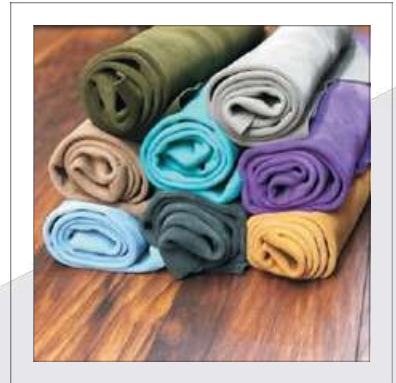
**Article No. AIFL - 15012**



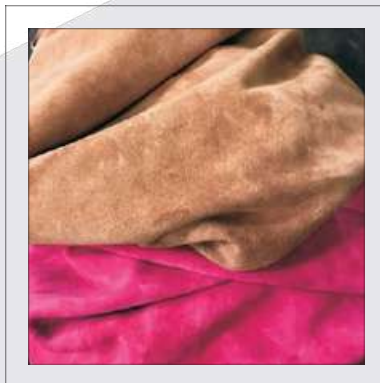
**Article No. AISL - 15013**



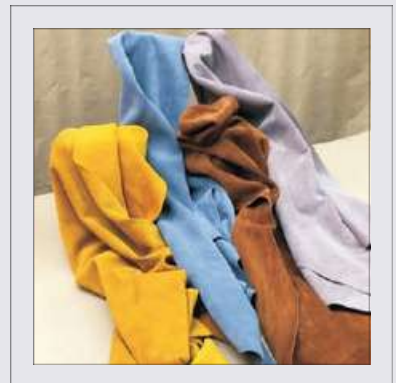
**Article No. AISL - 15014**



**Article No. AISL - 15015**



**Article No. AISL - 15016**



**Article No. AISL - 15017**

# VEG TAN

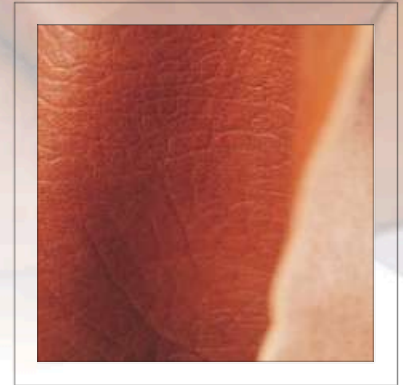
Vegetable tanned leather refers to the tannage, or method of tanning the cowhide into leather. It's called "vegetable" because of the natural materials used in the tanning process like tree bark. Vegetable tanning or veg tan as it's sometimes called, is one of the oldest methods of tanning known to man.

## Veg Tan Leather

- a. 3+ mm
- b. 2.4-2.6 mm
- c. 1.8-2.0 mm
- d. 1.6-1.8 mm



Article No. AIVT - 16001



Article No. AIVT - 16002



Article No. AIVT - 16003



Article No. AIVT - 16004



Article No. AIVT - 16005