



ENVELOPES, CURING BAGS & FLAPS

**midas**  
MILEAGE



# ARC / SNAP SEAL / FLEX SEAL SYSTEM



## Outer Envelope

Outer Envelope skirt length extends **2.0 inches** below the tyre bead on each side.

Sl. No.	Product Code	Tyre Size (Suggested)
1	46 x 15	325/95 R 24, 12.00 R 24
2	44 x 16	12 R 24.5, 11 R 24.5, 315/80 R 22.5, 10.00 R 22
3	44 x 14	11.00 R 24, 13 R 22.5, 11.00 R 22, 14/80 R 20, 11.00 R 20
4	44 x 13	12.00 R 22, 12.00 R 20
5	43 x 14	385/65 R 22.5, 365/80 R 20
6	42 x 14	315/75 R 22.5, 295/80 R 22.5, 295/75 R 22.5, 12 R 22.5, 10.00 R 20
7	42 x 15	315/70 R 22.5, 305/75 R 22.5, 305/70 R 22.5, 275/80 R 22.5, 11 R 22.5
8	40 x 13	275/70 R 22.5, 265/70 R 22.5, 10 R 22.5, 9.00 R 20, 305/70 R 19.5
9	35 x 12 <b>RC</b>	7.50 R 20, 285/70 R 19.5, 265/70 R 19.5, 9.00 R 16, 8.25 R 16, 8.25 R 15
10	35 x 12 <b>ST</b>	7.00 R 20, 6.50 R 20, 245/70 R 19.5
11	32 x 11	245/65 R 19.5, 235/70 R 19.5, 245/70 R 17.5, 235/75 R 17.5, 9.5 R 17.5, 10 R 16.5, 265/75 R 16, 245/75 R 16, 235/85 R 16, 215/85 R 16, 7.50 R 16, 7.50 R 15, 10.00 R 15 <b>LT</b>
12	32 x 13	225/70 R 19.5, 225/75 R 17.5, 215/75 R 17.5, 205/75 R 17.5, 7.00 R 16, 7.00 R 15
13	23 x 07	6.50-10
14	22 x 09	6.00-9
15	19 x 07	4.50-10, 5.00-8
16	17 x 06	4.00-8

**Note:** All suggested envelope selections are to be used as a guide only.

# DOUBLE ENVELOPE SYSTEM



## Outer Envelope

Sl. No.	Product Code	Tyre Size (Suggested)
1	52 x 28*	14.00 R 24
2	46 x 22*	445/65 R 22.5, 425/65 R 22.5, 14.00 R 20
3	44 x 22*	325/95 R 24, 12.00 R 24, 11.00 R 24, 12.00 R 22
4	44 x 25*	12 R 24.5, 13 R 22.5, 14/80 R 20, 12.00 R 20
5	44 x 19*	445/65 R 19.5
6	43 x 25*	385/65 R 22.5, 365/80 R 20
7	42 x 22*	11 R 24.5, 315/80 R 22.5, 315/75 R 22.5, 315/70 R 22.5, 12 R 22.5, 11.00 R 22, 11.00 R 20
8	42 x 25*	295/80 R 22.5, 11 R 22.5, 10.00 R 22
9	40 x 19*	305/75 R 22.5, 305/70 R 22.5, 295/75 R 22.5, 10.00 R 20
10	40 x 21*	275/80 R 22.5, 275/70 R 22.5, 10 R 22.5
11	40 x 25*	9.00 R 20
12	38 x 22	10.00 R 15, TR/LB
13	38 x 25	265/70 R 22.5, 8.25 R 20
14	38 x 20	445/45 R 19.5, 305/70 R 19.5
15	35 x 20*	7.50 R 20, 7.00 R 20, 6.50 R 20, 265/70 R 19.5
16	35 x 16*	285/70 R 19.5, 9.00 R 16
17	32 x 16*	245/70 R 19.5, 9.5 R 17.5, 10 R 16.5, 265/75 R 16, 8.25 R 16
18	32 x 19*	245/65 R 19.5, 235/70 R 19.5, 225/70 R 19.5, 245/75 R 16, 235/85 R 16, 215/85 R 16, 10.00 R 15 LT, 8.25 R 15
19	31 x 18	245/70 R 17.5, 235/75 R 17.5, 225/75 R 17.5, 215/75 R 17.5, 205/75 R 17.5, 7.50 R 16, 7.00 R 16, 7.50 R 15
20	28 x 16	225/75 R 16, 215/75 R 16, 6.50 R 16, 6.00 R 16, 7.00 R 15

**Note:** All suggested envelope selections are to be used as a guide only. Variations in tyre sizes, tyre dimensions, precured tread designs and precured tread thickness may require a smaller or larger envelope size. In some instances it may be necessary to measure the built tyre to determine the correct envelope size.

**GREEN** envelope can be ordered for higher life. All our envelopes marked with \* are also available in **GREEN**.

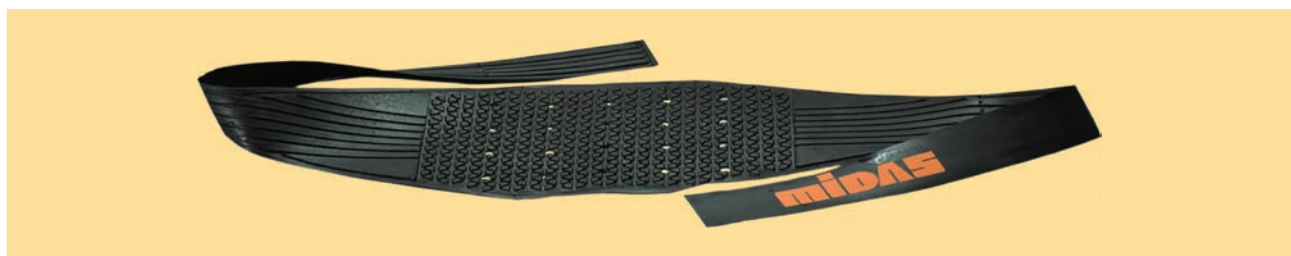
# DOUBLE ENVELOPE SYSTEM



## Inner Envelope

Sl. No.	Product Code	Tyre Size (Suggested)
1	1100 x 480	385/65 R 22.5, 385/55 R 22.5, 315/80 R 22.5, 315/75 R 22.5, 13 R 22.5, 12 R 22.5, 11.00 R 22, 12.00 R 20, 11.00 R 20, 425/55 R 19.5
2	1060 x 480 <b>M</b>	315/70 R 22.5, 305/70 R 22.5, 295/80 R 22.5, 295/75 R 22.5, 11 R 22.5, 10.00 R 22, 10.00 R 20
3	1060 x 480 <b>U</b>	275/80 R 22.5, 275/70 R 22.5, 10 R 22.5, 275/80 R 20, 9.00 R 20
4	780 x 400	9 R 17.5, 8.5 R 17.5, 8 R 17.5, 235/75 R 17.5, 225/75 R 17.5, 215/75 R 17.5, 205/75 R 17.5, 265/70 R 17.5, 245/70 R 17.5, 205/65 R 17.5, 8.25 R 16, 7.50 R 16, 7.00 R 16, 235/85 R 16, 215/85 R 16, 225/75 R 16, 215/75 R 16, 245/70 R 16, 255/75 R 15, 7.50 R 15

## WICKING PAD For Double Envelope System



Sl. No.	Product Code	Tyre Size (Suggested)
1	1250 x 175	385/65 R 22.5, 385/55 R 22.5, 315/80 R 22.5, 315/75 R 22.5, 315/70 R 22.5, 305/70 R 22.5, 295/80 R 22.5, 295/75 R 22.5, 275/80 R 22.5, 275/70 R 22.5, 13 R 22.5, 12 R 22.5, 11 R 22.5, 10 R 22.5, 11.00 R 22, 10.00 R 22, 12.00 R 20, 11.00 R 20, 10.00 R 20, 9.00 R 20, 275/80 R 20, 425/55 R 19.5

## RIM AND TUBE (Seals with removable flanges)



Sl. No.	Product Code	Tyre Size (Suggested)
1	52 x 21	14.00 R 24
2	46 x 22*	325/95 R 24, 12.00 R 24
3	46 x 15	445/65 R 22.5
4	46 x 19	14.00 R 20
5	44 x 22*	12 R 24.5, 11 R 24.5, 315/80 R 22.5, 11.00 R 22
6	44 x 19*	11.00 R 24, 13 R 22.5, 12.00 R 22, 14/80 R 20, 12.00 R 20
7	44 x 16	425/65 R 22.5, 445/65 R 19.5
8	43 x 20*	385/65 R 22.5, 365/80 R 20
9	42 x 19*	315/75 R 22.5, 12 R 22.5, 10.00 R 22, 10.00 R 20
10	42 x 22*	315/70 R 22.5, 305/75 R 22.5, 305/70 R 22.5, 295/80 R 22.5, 11 R 22.5
11	42 x 17*	11.00 R 20
12	40 x 17*	295/75 R 22.5, 275/80 R 22.5
13	40 x 19*	10 R 22.5
14	40 x 18*	9.00 R 20
15	40 x 13	445/45 R 19.5
16	38 x 20	275/70 R 22.5, 265/70 R 22.5, 8.25 R 20, 305/70 R 19.5, 10.00 R 15 TR/LB
17	35 x 16*	7.50 R 20, 7.00 R 20, 6.50 R 20, 285/70 R 19.5, 265/70 R 19.5, 245/70 R 19.5, 8.25 R 16
18	35 x 13*	9.00 R 16
19	32 x 16*	245/65 R 19.5, 235/70 R 19.5, 225/70 R 19.5, 245/70 R 17.5, 235/75 R 17.5, 225/75 R 17.5, 215/75 R 17.5, 245/75 R 16, 235/85 R 16, 7.50 R 16
20	32 x 15*	265/75 R 16, 8.25 R 15, 9.5 R 17.5, 10 R 16.5
21	32 x 19*	215/85 R 16, 10.00 R 15 LT
22	31 x 18	205/75 R 17.5
23	31 x 14*	7.00 R 16, 7.50 R 15, 7.00 R 15
24	28 x 16	225/75 R 16, 215/75 R 16, 6.50 R 16, 6.00 R 16, 195 R 15, 185 R 14, 195/75 R 14
25	23 x 10*	6.50-10
26	22 x 09*	155 R 12, 145 R 12, 6.00-9
27	19 x 09*	4.50-10
28	17 x 06*	5.00-8
29	17 x 08*	4.00-8

**Note:** All suggested envelope selections are to be used as a guide only.

**GREEN** envelope can be ordered for higher life. All our envelopes marked with \* are also available in **GREEN**.

## HALF SKIRT (No valve) Seals sidewall to sidewall



Sl. No.	Product Code	Tyre Size (Suggested)
1	52 x 28	14.00 R 24
2	46 x 28*	325/95 R 24, 12.00 R 24
3	46 x 22*	445/65 R 22.5, 425/65 R 22.5, 14.00 R 20
4	44 x 25*	12 R 24.5, 11 R 24.5, 11.00 R 24, 13 R 22.5, 11.00 R 22, 12.00 R 20
5	44 x 22*	12.00 R 22, 14/80 R 20
6	44 x 19*	445/65 R 19.5
7	43 x 25*	385/65 R 22.5, 365/80 R 20
8	42 x 22*	315/80 R 22.5, 315/75 R 22.5, 315/70 R 22.5, 12 R 22.5, 11.00 R 20
9	42 x 25*	305/75 R 22.5, 305/70 R 22.5, 295/80 R 22.5, 11 R 22.5, 10.00 R 22, 10.00 R 20
10	40 x 19*	295/75 R 22.5
11	40 x 21*	275/70 R 22.5, 10 R 22.5
12	40 x 25*	275/80 R 22.5, 9.00 R 20
13	38 x 22	10.00 R 15 <b>TR/LB</b>
14	38 x 25	265/70 R 22.5, 8.25 R 20
15	38 x 20	445/45 R 19.5, 305/70 R 19.5
16	35 x 20*	7.50 R 20, 7.00 R 20, 6.50 R 20, 265/70 R 19.5
17	35 x 16*	285/70 R 19.5, 9.00 R 16
18	32 x 16*	245/70 R 19.5, 9.5 R 17.5, 10 R 16.5, 265/75 R 16
19	32 x 19*	245/65 R 19.5, 235/70 R 19.5, 225/70 R 19.5, 245/70 R 17.5, 245/75 R 16, 235/85 R 16, 215/85 R 16, 8.25 R 16, 10.00 R 15 <b>LT</b> , 8.25 R 15
20	31 x 18	235/75 R 17.5, 225/75 R 17.5, 215/75 R 17.5, 205/75 R 17.5, 7.50 R 16, 7.00 R 16, 7.50 R 15
21	29 x 19	6.50 R 16, 6.00 R 16, 195 R 15
22	28 x 16	225/75 R 16, 215/75 R 16, 7.00 R 15
23	26 x 16	185 R 14, 195/75 R 14
24	21 x 12	155 R 12, 145 R 12, 6.00-9
25	23 x 13*	6.50-10
26	19 x 11*	4.50-10
27	17 x 08*	5.00-8, 4.00-8

**Note:** All suggested envelope selections are to be used as a guide only.

**GREEN** envelope can be ordered for higher life. All our envelopes marked with \* are also available in **GREEN**.

# CURING BAGS AND FLAPS



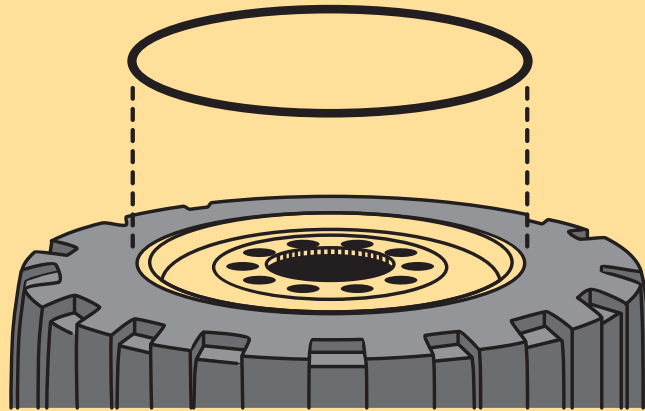
Sl. No.	Sizes	Sl. No.	Sizes	Sl. No.	Sizes
1	16.9 x 28	9	315/80 R 22.5	17	7.50 x 16
2	14.9 x 28	10	295/80 R 22.5	18	7.00 x 15
3	13.6 x 28	11	12.00 x 20	19	6.00 x 16
4	12.4 x 28	12	11.00 x 20	20	6.00 x 14
5	14.00 x 24/25	13	10.00 x 20	21	5.90 x 15
6	12.00 x 24	14	9.00 x 20	22	5.65/4.50 x 12
7	12 R 22.5	15	8.25 x 20	23	4.50 x 10
8	11 R 22.5	16	8.25 x 16	24	4.00 x 8



Sl. No.	Flap size (Inches)	Tyre Size (Suggested)
1	22.5 <b>Extra Wide</b>	385/65 R 22.5, 315/80 R 22.5, 12 R 22.5
2	22.5	295/80 R 22.5, 11 R 22.5
3	20 <b>Extra Wide</b>	12.00 R 20, 11.00 R 20, 10.00 R 20, 12.00 x 20, 11.00 x 20
4	20 <b>SUPER</b>	10.00 x 20, 9.00 x 20, 9.00 R 20, 8.25 x 20, 8.25 R 20
5	16 <b>LCV</b>	8.25 R 16, 7.50 R 16, 7.00 R 16, 7.50 R 15, 7.00 R 15

# OTR TYRES 'O' SEALING RINGS

Sealing the tubeless tyre beads of OTR vehicle with split rims



## DATA OF MIDAS TUBELESS 'O' RING SIZES

SL	Product Code	Thickness (mm)	Rim Size (Inches)	Tyre Size (Suggested)
1	OR 20 THIN	6.5	20	365/80-20, 385/80-20 16.00-20, 20-20
2	OR 24 THIN	6.5	24	16.00-24, 14.00-24
3	OR 25 THIN	6.5	25	15.5-25, 17.5-25
4	OR 25 THICK	9.5	25	16.00-25, 18.00-25 20.5-25, 23.5-25 26.5-25, 29.5-25
5	OR 29 THICK	9.5	29	26.5-29, 29.5-29 33.25-29
6	OR 33 THICK	9.5	33	18.00-33, 35/65-33 33.25-33
7	OR 35 THICK	9.5	35	21.00-35, 24.00-35 33.25-35
8	OR 45 THICK	9.5	45	45/65-45
9	OR 49 THICK	9.5	49	27.00-49

**MIDAS TREADS INDIA PVT. LTD.**

Midas Marketing Building  
Varissery Junction, Mariathuruthu P.O.  
Kottayam - 686 017, Kerala, India.

Phone: 91-481-2561215

E-mail: [ramnath.r@midastreads.com](mailto:ramnath.r@midastreads.com) (Export Division)  
[sales@midastreads.com](mailto:sales@midastreads.com) (Domestic Division)

Website: [www.midas.co.in](http://www.midas.co.in)

