



# MIDAS

## MILEAGE



DOMESTIC DESIGNS 2024

## Grow with MIDAS MILEAGE...

Get the sales and profit growth you want in your retreading business by giving your customers MIDAS MILEAGE. Our high mileage compounds are designed to lower a fleet owner's running cost by maximizing mileage per retread tyre.



Founded in 1969, MIDAS has grown to become Asia's largest supplier of Tyre Retreading Materials. We have focused on constantly improving compounds to provide customers with the best mileage.



## ISO 9001:2015, ISO 14001:2015

Our quality system is certified by VEXIL and RAPL, to ensure that we provide you with consistent materials, on time, every time.

VEXIL BUSINESS PROCESS SERVICES



# Certificate

This Certificate is issued to

**Midas Treads (India) Pvt. Ltd.**  
P.O. Vazhoor East  
Kottayam  
Kerala 686 504  
INDIA

who have implemented a Quality Management System, which meets the requirements laid down in ISO 9001:2015, with the following scope:

**Manufacture of Precured Tread Rubber, Vulcanizing Solution and Bonding Gum**

Certificate No. : Q9122433  
Original Issue : 07 September 2015  
Latest Issue : 07 September 2021  
Valid Till : 06 September 2024

The continuing validity of this certificate is subject to timely conduct of surveillance audits.

Surveillance 1 due before : 11 August 2022  
Surveillance 2 due on : 11 August 2023



for Vexil Business Process Services Private Limited  
80-F, Kamla Nagar, Delhi 110 007




## ISO 9001:2015

To check the validity of the certificate, please call +91 11 2384 8001 or email to info@vexiltps.com  
The validity of the certificate can also be verified at <http://www.vexiltps.com>  
Coloured reproduction of this certificate is not permitted.  
Upon request, the Certificate shall be returned to Vexil Business Process Services Private Limited.

Page 1 of 1



Accredited Registrar - 119012A

# Registration Certificate

This is to certify that

**MIDAS TREADS INDIA PVT. LTD.**  
VAZHOOR EAST, KOTTAYAM DISTRICT - 686 504, KERALA, INDIA.

has been assessed by RAPL and found to comply with the requirements of

## ISO 14001 : 2015

### Environmental Management Systems

**For the following activities:**  
MANUFACTURE OF PRECURED TREAD RUBBER, VULCANIZING SOLUTION AND BONDING GUM.

Certificate Number: E2023094629  
Date of certification: 21/09/2023  
ISI Surveillance on or before: 20/09/2024  
IInd Surveillance on or before: 20/09/2025  
Certification Valid Until: 20/09/2026







*Arshady*  
**Director (Certification)**  
**Royal Assessments Pvt. Ltd.**  
823 A, Tower-B, 17thm, Plot No. A - 40, Sector - 62, Noida - 201301, India.  
www.royalapl.com, info@royalapl.com  
Phone : +91 120 4251329  
This Certificate can be verified at [www.royalapl.com](http://www.royalapl.com)

This Certificate remains the property of Royal Assessments Private Limited. Must be returned on request or if certificate is withdrawn. Validity of this certificate is subject to successful surveillance audits. RAPL is accredited by EGAC. EGAC is member of International Accreditation Forum (IAF) and signatory of MLA.

# PRODUCTS



## Precured Treads

Made from high mileage compounds, our treads have been accepted the world over and tested on all road conditions.

## Bonding Gum

Our gum is made from 100% natural rubber to increase tack. Available in customer specified sizes also. Different types of Gum are available for both Precured and Hot process. Can be used to fill nail holes and repair injured parts of casing.



### FAST CURE 99°C

Special gum that can be used to reduce cure time. Please consult us before using.



### REGULAR



### BG 22



### SP

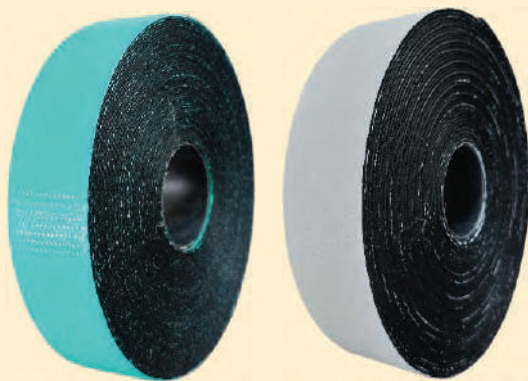
## Shoulder Strip Cushion Gum

### Width

30 mm, 40 mm, 50 mm

### Thickness

1.2 mm



## Black Vulcanizing Solution

Available as **RTU (Ready to use)** and **ULTRA (Thin)** solution. Compatible with both precured and hot process.



Available in 25 litres and 30 litres

## Cushion Repair Compound

For industrial and agricultural use.  
Can be used for submersible pumps.



## Rope Rubber

To be used in rubber extruder guns to repair rasping area.  
Provides excellent process safety and tack.



## CONVENTIONAL (HOT) RUBBER

Increased scorch safety to maximise shelf life. Different compounds available for different uses including Truck, Tractor and OTR. Available in customer specified sizes.



Tractor



14.00 x 25



18.00 x 25



23.5 x 25



## Curing Envelopes

Heat resistant envelopes for ease of use and long life.



Details at the Back

## Curing Bags



Details at the Back

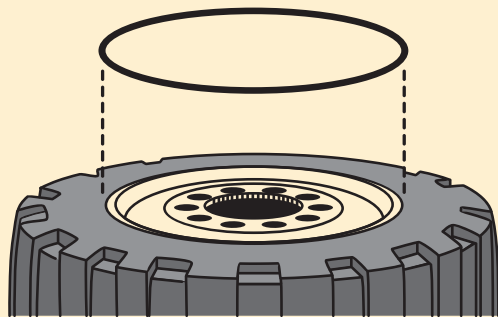
## Flaps



Details at the Back

## OTR Tyres 'O' Ring

Sealing the tubeless tyre beads of OTR vehicle with split rims



Details at the Back

## Wicking Pad

For Double Envelope System



Details at the Back

# midas MILEAGE

<p><b>PREMIUM</b></p>			<ul style="list-style-type: none"> <li>• High mileage tread</li> <li>• Use for NYLON or RADIAL tyres</li> </ul>
<p><b>GREEN</b></p>			<ul style="list-style-type: none"> <li>• 25% higher mileage than Premium</li> <li>• Use for NYLON or RADIAL tyres</li> </ul>
<p><b>DOUBLE GREEN</b></p>			<ul style="list-style-type: none"> <li>• 25% higher mileage than Green</li> <li>• Use for NYLON or RADIAL tyres</li> </ul>
<p><b>RADIAL SPECIAL</b></p>			<ul style="list-style-type: none"> <li>• Over 1 lakh kilometers on good roads</li> <li>• Use only for RADIAL tyres</li> </ul>
<p><b>midas  arcus</b></p>			<ul style="list-style-type: none"> <li>• The best compound we have for any radial tyre</li> <li>• Exceptional mileage and diesel saving</li> </ul>

# midas arcus



**UPTO  
DOUBLE  
TREAD LIFE AND  
SAVES AT LEAST  
8.5% FUEL**



## KM TRANS LOGISTICS PRIVATE LIMITED

HEAD OFFICE:  
D-80, New Anaj Mandi, Outside Chandpole, Jaipur-302001  
Tel: (O) +91-141-2361785 E-mail: jaipur@kmtrans.in

### TO WHOM IT MAY CONCERN

30-03-2022

I have been using Arcus tread from 'Midas Mileage' from last 9 months. The projected mileage is one of the highest in the industry. It should be used only on the best casings to enjoy the full life of the tread.

Thank You & Regards

GAURAV BENARA  
KM Trans Logistics Private Limited

*Gaurav Benara*  
Signature  
KM Trans Logistics Pvt. Ltd.

ALD					
Name	Length (inch)	Base width (mm)	Tread depth (mm)	Base thickness (mm)	Approx. weight (kgs)
10.00 R 20	128	230	13.5	3.5	12.000
10.00 R 20	128	220	13.5	3.5	11.800

MVN					
Name	Length (inch)	Base width (mm)	Tread depth (mm)	Base thickness (mm)	Approx. weight (kgs)
10.00 R 20	128	230	13.5	3.8	12.100
10.00 R 20	128	220	13.5	3.8	11.400

RM 30					
Name	Length (inch)	Base width (mm)	Tread depth (mm)	Base thickness (mm)	Approx. weight (kgs)
295/80 R 22.5 L.W.	128	250	14.0	3.5	13.400
295/80 R 22.5	128	240	16.5	3.5	14.800
295/80 R 22.5 L.W.	128	240	14.0	3.5	13.000

M 27					
Name	Length (inch)	Base width (mm)	Tread depth (mm)	Base thickness (mm)	Approx. weight (kgs)
10.00 R 20	128	220	13.5	3.0	12.000

MARG					
Name	Length (inch)	Base width (mm)	Tread depth (mm)	Base thickness (mm)	Approx. weight (kgs)
295/80 R 22.5	130	250	11.0	3.4	11.500
295/80 R 22.5	130	240	11.0	3.4	11.100
10.00 R 20	130	230	11.0	3.4	10.800
10.00 R 20	130	220	11.5	3.4	10.400
10.00 R 20	128	220	11.5	3.4	10.200

R 2					
Name	Length (inch)	Base width (mm)	Tread depth (mm)	Base thickness (mm)	Approx. weight (kgs)
10.00 R 20	128	220	15.0	4.0	13.000

# PMG RADIAL

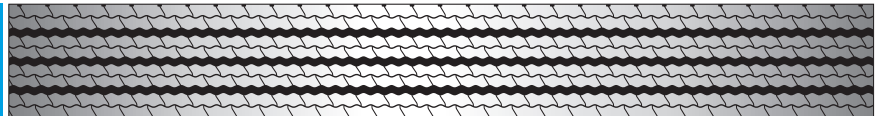


# MTN

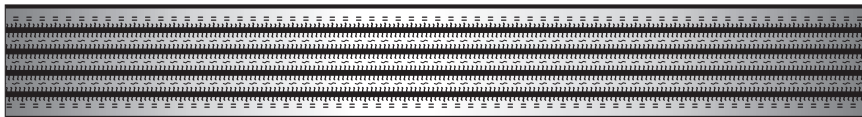
Name	Length (inch)	Base width (mm)	Tread depth (mm)	Base thickness (mm)	Approx. weight (kgs)
10.00 R 20 Super*	128	230	18.0	4.0	14.500
10.00 R 20 Super*	128	220	18.0	4.0	14.000
10.00 R 20	128	240	14.0	3.5	12.200
10.00 R 20	128	230	14.0	3.5	11.800
10.00 R 20	128	220	14.5	3.5	11.600
10.00 R 20	128	215	14.5	3.5	11.400

\*Coming soon

# TERRA



Name	Length (inch)	Base width (mm)	Tread depth (mm)	Base thickness (mm)	Approx. weight (kgs)
10.00 R 20	128	220	12.0	3.5	10.800



# MRK

Name	Length (inch)	Base width (mm)	Tread depth (mm)	Base thickness (mm)	Approx. weight (kgs)
295/80 R 22.5	128	240	11.5	3.5	11.500
10.00 R 20	128	230	11.5	3.5	11.200
10.00 R 20	128	220	13.0	3.5	11.600

# RADIAL DESIGNS

ADH					
Name	Length (inch)	Base width (mm)	Tread depth (mm)	Base thickness (mm)	Approx. weight (kgs)
10.00 R 20	128	230	14.0	3.5	12.100
10.00 R 20	128	220	14.0	3.3	11.500
10.00 R 20	128	215	14.0	3.3	11.200
10.00 R 20	128	210	13.5	3.8	11.100
9.00 R 20	127	190	14.5	3.5	10.300
9.00 R 20	124	190	14.5	3.5	10.100
8.25 R 20	118	190	14.5	3.5	9.600
8.25 R 20 <b>Super</b>	121	180	16.0	3.5	10.200
8.25 R 20 <b>L.W.</b>	118	180	12.0	3.5	7.800
8.25 R 16 <b>L.W.</b>	103	180	12.0	3.5	6.800
8.25 R 16	104	170	14.5	3.5	8.000

ALD					
Name	Length (inch)	Base width (mm)	Tread depth (mm)	Base thickness (mm)	Approx. weight (kgs)
295/80 R 22.5	128	240	13.0	3.3	12.500
10.00 R 20 <b>Super</b>	128	230	16.0	4.0	14.400
10.00 R 20	128	230	13.5	3.5	12.100
10.00 R 20 <b>Super</b>	128	220	16.0	4.0	13.800
10.00 R 20	128	220	13.5	3.5	11.800
10.00 R 20	128	215	13.5	3.5	11.400
10.00 R 20	128	210	13.0	3.5	10.900
<b>10.00 R 20</b>	<b>128</b>	<b>205</b>	<b>13.0</b>	<b>3.5</b>	<b>10.600</b>
9.00 R 20	124	200	12.5	3.3	9.400
8.25 R 20	118	190	12.0	3.0	8.200
8.25 R 20	121	187	15.0	3.5	10.300
8.25 R 20	118	187	15.0	3.5	10.100
8.25 R 20	118	175	12.0	3.0	7.500
8.25 R 16	103	187	15.0	3.5	8.800
8.25 R 16	103	175	12.0	3.0	6.500
235/75 R 17.5	99	210	11.5	3.0	7.500
7.50 R 16	99	165	13.0	3.3	6.500

AMD					
Name	Length (inch)	Base width (mm)	Tread depth (mm)	Base thickness (mm)	Approx. weight (kgs)
10.00 R 20	128	230	14.0	3.5	12.000
10.00 R 20	128	220	14.0	3.5	11.000

BCRDL					
Name	Length (inch)	Base width (mm)	Tread depth (mm)	Base thickness (mm)	Approx. weight (kgs)
10.00 R 20	128	230	15.0	4.0	14.000
10.00 R 20	128	215	15.0	4.0	13.100
10.00 R 20	127	212	10.0	3.0	8.900
9.00 R 20	124	190	11.0	3.5	8.700

D 167 E					
Name	Length (inch)	Base width (mm)	Tread depth (mm)	Base thickness (mm)	Approx. weight (kgs)
10.00 R 20	128	219	15.0	3.0	11.300
10.00 R 20	128	203	15.0	3.0	10.000

EH					
Name	Length (inch)	Base width (mm)	Tread depth (mm)	Base thickness (mm)	Approx. weight (kgs)
10.00 R 20	128	210	16.0	3.5	12.000

H 27					
Name	Length (inch)	Base width (mm)	Tread depth (mm)	Base thickness (mm)	Approx. weight (kgs)
10.00 R 20	128	203	13.5	3.5	10.800
9.00 R 20	124	194	13.5	3.5	10.200
8.25 R 20	118	175	12.0	3.0	7.600
8.25 R 16	103	175	12.0	3.0	6.600
7.50 R 16	99	160	12.0	3.0	5.900

# RADIAL DESIGNS



Name	Length (inch)	Base width (mm)	Tread depth (mm)	Base thickness (mm)	Approx. weight (kgs)
10.00 R 20	128	203	12.5	3.5	10.100



Name	Length (inch)	Base width (mm)	Tread depth (mm)	Base thickness (mm)	Approx. weight (kgs)
315/80 R 22.5	128	320	14.5	4.0	18.900
295/80 R 22.5	128	250	14.5	3.5	13.000
295/80 R 22.5	128	240	14.5	3.5	12.400
10.00 R 20	128	230	14.5	3.5	11.600
10.00 R 20	128	220	16.5	3.5	12.600
10.00 R 20	128	215	16.5	3.5	12.300
10.00 R 20 L.W.	128	220	14.0	3.5	11.000
10.00 R 20 L.W.	128	215	14.0	3.5	10.900



Name	Length (inch)	Base width (mm)	Tread depth (mm)	Base thickness (mm)	Approx. weight (kgs)
10.00 R 20	128	230	15.0	3.5	13.000
10.00 R 20	128	215	15.0	3.5	12.000



Name	Length (inch)	Base width (mm)	Tread depth (mm)	Base thickness (mm)	Approx. weight (kgs)
12.00 R 24	147	260	19.0	3.3	18.200
12.00 R 24	147	250	19.0	3.3	17.500
12.00 R 24	147	240	19.0	3.3	16.800
9.00 R 20	124	190	15.0	3.0	9.000
8.25 R 20	118	180	14.0	3.3	7.700
8.25 R 16	103	170	13.0	3.3	6.100
7.50 R 16	99	160	14.0	2.5	5.700
7.50 R 16	99	150	14.5	3.0	5.300
7.00 R 15	93	150	14.5	3.0	5.000
7.00 R 15	93	140	13.0	2.5	4.200



Name	Length (inch)	Base width (mm)	Tread depth (mm)	Base thickness (mm)	Approx. weight (kgs)
12.00 R 20	134	280	21.0	4.0	21.000
315/80 R 22.5	130	280	20.0	4.0	20.400
12.00 R 20	134	270	20.0	4.0	20.000
315/80 R 22.5	128	260	20.0	4.0	18.300
295/80 R 22.5	128	250	20.0	4.0	18.100
295/80 R 22.5	128	240	20.0	4.0	16.600
10.00 R 20	128	230	20.0	4.0	16.300
10.00 R 20	128	230	19.0	3.5	14.400
10.00 R 20 Super	128	220	20.0	4.0	15.500
10.00 R 20	129	220	15.0	3.5	11.200
10.00 R 20	128	210	15.0	3.5	10.600
12-16.5 BOBCAT	99	270	21.0	4.0	15.400



Name	Length (inch)	Base width (mm)	Tread depth (mm)	Base thickness (mm)	Approx. weight (kgs)
10.00 R 20	128	210	13.0	3.5	9.900
10.00 R 20	127	200	13.0	3.5	8.800
9.00 R 20	124	190	13.0	3.5	9.100
9.00 R 20	124	180	13.0	3.5	8.300
8.25 R 20	118	190	13.0	3.5	8.700
8.25 R 20	118	180	13.0	3.5	7.900
8.25 R 20	118	170	13.0	3.5	7.200
8.25 R 16	103	170	13.0	3.5	6.300



Name	Length (inch)	Base width (mm)	Tread depth (mm)	Base thickness (mm)	Approx. weight (kgs)
315/80 R 22.5	128	260	18.0	3.5	17.600
295/80 R 22.5	128	250	18.0	3.5	16.200
295/80 R 22.5	128	240	18.0	3.5	15.700
10.00 R 20	130	230	20.0	4.0	16.300
315/80 R 22.5 L.W.	128	260	14.0	3.5	14.100
295/80 R 22.5 L.W.	128	240	14.0	3.5	12.700
10.00 R 20 L.W.	128	230	14.0	3.5	12.200
10.00 R 20 L.W.	130	220	14.0	3.5	11.700

# RADIAL DESIGNS

M 22					
Name	Length (inch)	Base width (mm)	Tread depth (mm)	Base thickness (mm)	Approx. weight (kgs)
10.00 R 20	128	230	16.5	3.5	12.700
10.00 R 20	128	220	16.5	3.5	12.300
10.00 R 20	128	215	16.5	3.5	12.200
10.00 R 20	128	204	16.5	3.5	11.600

M 23					
Name	Length (inch)	Base width (mm)	Tread depth (mm)	Base thickness (mm)	Approx. weight (kgs)
10.00 R 20	128	220	13.0	3.3	11.500

M 24					
Name	Length (inch)	Base width (mm)	Tread depth (mm)	Base thickness (mm)	Approx. weight (kgs)
10.00 R 20	128	230	13.0	3.0	11.700
10.00 R 20 <b>Super</b>	128	220	13.0	3.0	11.000
10.00 R 20 <b>L.W.</b>	128	220	12.0	3.5	10.300
10.00 R 20	128	215	13.0	3.5	10.900
10.00 R 20 <b>L.W.</b>	128	215	12.0	3.5	10.000
10.00 R 20	128	203	12.0	3.0	9.300
235/75 R 17.5	98	203	12.0	3.0	7.100

M 25					
Name	Length (inch)	Base width (mm)	Tread depth (mm)	Base thickness (mm)	Approx. weight (kgs)
10.00 R 20	128	230	13.0	3.5	12.100
10.00 R 20	128	220	13.0	3.5	11.700

M 26					
Name	Length (inch)	Base width (mm)	Tread depth (mm)	Base thickness (mm)	Approx. weight (kgs)
<b>12.00 R 24</b>	<b>147</b>	<b>285</b>	<b>18.0</b>	<b>3.5</b>	<b>20.500</b>
12.00 R 24	147	275	18.0	3.5	20.400
12.00 R 24	147	265	18.0	3.5	19.300
<b>315/80 R 22.5</b>	<b>128</b>	<b>260</b>	<b>18.0</b>	<b>3.5</b>	<b>16.700</b>
295/80 R 22.5	128	250	18.0	3.5	15.800
295/80 R 22.5	128	240	18.0	3.5	15.500
<b>10.00 R 20</b>	<b>128</b>	<b>230</b>	<b>18.0</b>	<b>3.5</b>	<b>14.900</b>
10.00 R 20	128	220	14.5	3.5	12.000
10.00 R 20 <b>L.W.</b>	128	220	13.5	3.5	11.400
<b>9.00 R 20</b>	<b>124</b>	<b>195</b>	<b>14.0</b>	<b>3.5</b>	<b>10.000</b>

M 27					
Name	Length (inch)	Base width (mm)	Tread depth (mm)	Base thickness (mm)	Approx. weight (kgs)
295/80 R 22.5	128	240	12.5	3.0	12.600
10.00 R 20	128	230	12.5	3.0	11.600
10.00 R 20	128	225	13.5	3.0	12.500
10.00 R 20	128	220	13.5	3.0	12.000
10.00 R 20	128	215	13.5	3.0	11.800
8.25 R 20	118	175	11.5	3.0	7.700
8.25 R 16	103	175	11.5	3.0	6.700
7.50 R 16	99	160	11.5	3.0	5.800

M 28					
Name	Length (inch)	Base width (mm)	Tread depth (mm)	Base thickness (mm)	Approx. weight (kgs)
10.00 R 20	128	230	13.0	3.5	11.800
10.00 R 20	128	220	13.0	3.5	11.300

# RADIAL DESIGNS

M 30					
Name	Length (inch)	Base width (mm)	Tread depth (mm)	Base thickness (mm)	Approx. weight (kgs)
<b>295/80 R 22.5 Super</b>	<b>133</b>	<b>240</b>	<b>14.0</b>	<b>3.3</b>	<b>14.100</b>
295/80 R 22.5	128	240	13.0	3.0	12.800
10.00 R 20	128	230	14.0	3.0	12.700
10.00 R 20	128	225	13.0	3.0	12.000
<b>10.00 R 20 Super</b>	<b>130</b>	<b>220</b>	<b>14.0</b>	<b>3.3</b>	<b>12.500</b>
10.00 R 20	128	220	13.0	3.0	11.700
10.00 R 20	128	215	13.0	3.0	11.500

M 34					
Name	Length (inch)	Base width (mm)	Tread depth (mm)	Base thickness (mm)	Approx. weight (kgs)
295/80 R 22.5	128	240	14.0	3.5	13.300
10.00 R 20	128	230	13.5	3.5	12.000
10.00 R 20	128	225	14.0	3.5	12.300
10.00 R 20	128	215	14.0	3.5	12.000

M 31					
Name	Length (inch)	Base width (mm)	Tread depth (mm)	Base thickness (mm)	Approx. weight (kgs)
<b>295/80 R 22.5 Super</b>	<b>133</b>	<b>240</b>	<b>13.0</b>	<b>3.5</b>	<b>13.300</b>
295/80 R 22.5	128	240	12.0	3.5	12.000
10.00 R 20	128	225	13.0	3.5	11.900
10.00 R 20	128	215	13.0	3.5	11.200
8.25 R 20	118	185	12.0	3.5	8.300
8.25 R 20	118	175	11.5	3.5	7.500
8.25 R 16	103	175	11.5	3.5	6.600

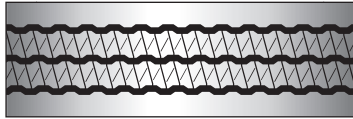
MAXIMUS					
Name	Length (inch)	Base width (mm)	Tread depth (mm)	Base thickness (mm)	Approx. weight (kgs)
315/80 R 22.5	128	265	16.0	4.0	16.100
315/80 R 22.5	128	260	14.0	4.0	14.400
295/80 R 22.5	128	250	16.0	4.0	14.700
295/80 R 22.5	128	240	16.0	4.0	14.500
10.00 R 20	128	235	19.0	4.0	15.700
10.00 R 20	128	235	15.0	4.0	12.900
10.00 R 20	128	230	16.0	4.0	13.600
10.00 R 20	128	225	16.0	4.0	13.100
10.00 R 20	128	220	16.0	4.0	12.900
10.00 R 20	128	215	15.0	3.5	12.100
10.00 R 20 <b>L.W.</b>	128	250	14.0	3.5	13.600
10.00 R 20 <b>L.W.</b>	128	240	14.0	3.5	12.800
10.00 R 20 <b>L.W.</b>	128	235	14.0	3.5	12.400
10.00 R 20 <b>L.W.</b>	128	230	14.0	3.5	11.900
10.00 R 20 <b>L.W.</b>	128	225	14.0	3.5	11.600
10.00 R 20 <b>L.W.</b>	128	220	14.0	3.5	11.500
10.00 R 20 <b>L.W.</b>	128	215	14.0	3.5	11.000
10.00 R 20 <b>Super</b>	128	210	16.5	3.5	12.600
10.00 R 20	128	210	15.0	3.5	11.600
10.00 R 20	127	205	13.5	3.5	10.000
9.00 R 20	124	194	13.5	3.5	9.900
9.00 R 20	124	190	16.0	4.0	10.700
9.00 R 20	124	187	13.5	3.5	9.500
8.25 R 20	118	180	14.0	3.5	8.800
9.00 R 16	111	194	13.5	3.5	8.800
9.00 R 16	111	187	13.5	3.5	8.400
7.50 R 16	99	160	11.0	3.5	5.800
7.50 R 16	99	150	11.0	3.0	5.200
7.00 R 15	93	150	11.0	3.0	4.900

M 32					
Name	Length (inch)	Base width (mm)	Tread depth (mm)	Base thickness (mm)	Approx. weight (kgs)
315/80 R 22.5	128	260	18.0	4.0	17.700
295/80 R 22.5	128	250	18.0	4.0	17.000
295/80 R 22.5	128	240	18.0	4.0	16.600
10.00 R 20	128	230	18.0	4.0	15.000

M 33					
Name	Length (inch)	Base width (mm)	Tread depth (mm)	Base thickness (mm)	Approx. weight (kgs)
10.00 R 20	128	230	17.0	4.0	15.000
10.00 R 20	128	220	17.0	4.0	14.400

# RADIAL DESIGNS

MCH					
Name	Length (inch)	Base width (mm)	Tread depth (mm)	Base thickness (mm)	Approx. weight (kgs)
295/80 R 22.5	128	250	15.0	3.5	16.000
295/80 R 22.5	128	240	15.0	3.5	15.000
10.00 R 20	128	230	15.0	3.5	14.700



MDH					
Name	Length (inch)	Base width (mm)	Tread depth (mm)	Base thickness (mm)	Approx. weight (kgs)
10.00 R 20	128	230	13.0	3.0	11.900
10.00 R 20	128	215	13.0	4.0	11.900
10.00 R 20	128	210	13.0	4.0	11.500



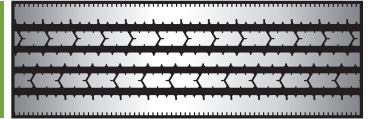
MML Directional Pattern					
Name	Length (inch)	Base width (mm)	Tread depth (mm)	Base thickness (mm)	Approx. weight (kgs)
315/80 R 22.5	128	270	18.0	4.0	17.900
315/80 R 22.5	128	260	18.0	4.0	17.300
295/80 R 22.5	128	250	18.0	4.0	17.000
295/80 R 22.5	128	240	18.0	4.0	15.600
10.00 R 20	128	230	18.0	4.0	14.800
10.00 R 20	128	220	17.0	4.0	13.700
315/80 R 22.5 L.W.	128	260	14.0	3.5	14.000
295/80 R 22.5 L.W.	128	250	14.0	3.5	12.800
295/80 R 22.5 L.W.	128	240	14.0	3.5	12.500
10.00 R 20 L.W.	128	230	14.0	3.5	11.700
10.00 R 20	128	215	14.0	3.5	11.100
10.00 R 20	128	210	14.0	3.5	10.900
4.50 x 10	60	100	8.5	2.5	1.400



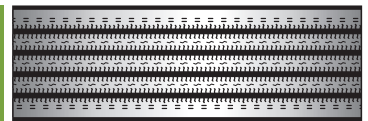
MVI					
Name	Length (inch)	Base width (mm)	Tread depth (mm)	Base thickness (mm)	Approx. weight (kgs)
295/80 R 22.5	128	250	18.0	3.5	15.500
295/80 R 22.5	128	240	18.0	3.5	14.100
10.00 R 20	128	210	13.5	3.5	10.400



MREC					
Name	Length (inch)	Base width (mm)	Tread depth (mm)	Base thickness (mm)	Approx. weight (kgs)
315/80 R 22.5	128	280	14.0	3.3	14.600
315/80 R 22.5	128	270	14.5	3.5	15.400
315/80 R 22.5	128	265	14.5	3.5	14.800
315/80 R 22.5	128	260	14.5	3.5	14.200
295/80 R 22.5	128	250	14.5	3.5	14.000
295/80 R 22.5	128	240	14.5	3.5	13.400
10.00 R 20	128	230	14.5	3.5	12.800
10.00 R 20	128	220	14.5	3.5	12.200
10.00 R 20	128	208	13.5	3.5	10.800




MRK					
Name	Length (inch)	Base width (mm)	Tread depth (mm)	Base thickness (mm)	Approx. weight (kgs)
10.00 R 20	128	210	14.0	3.5	11.500
10.00 R 20 L.W.	128	210	12.5	3.5	10.700
10.00 R 20	128	205	12.0	3.0	10.000
235/75 R 17.5 L.W.	98	210	12.5	3.5	8.200
235/75 R 17.5	98	205	12.0	3.0	7.700




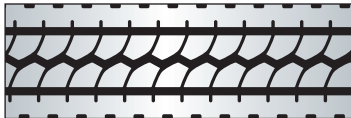
MVN					
Name	Length (inch)	Base width (mm)	Tread depth (mm)	Base thickness (mm)	Approx. weight (kgs)
10.00 R 20	128	230	13.5	3.8	12.100
10.00 R 20 Super	128	220	13.5	3.8	11.500
10.00 R 20	128	220	13.0	3.5	11.000
10.00 R 20	128	215	14.0	3.5	11.700






RM 31					
Name	Length (inch)	Base width (mm)	Tread depth (mm)	Base thickness (mm)	Approx. weight (kgs)
12.00 x 20	136	270	20.0	4.0	20.300
315/80 R 22.5	130	270	20.0	4.0	19.500
315/80 R 22.5	130	260	20.0	4.0	18.800
295/80 R 22.5	135	250	20.0	4.0	19.000
295/80 R 22.5	133	240	20.0	4.0	18.300
10.00 R 20	130	220	20.0	4.0	16.000
295/80 R 22.5 <b>L.W.</b>	135	250	16.0	4.0	16.000
295/80 R 22.5 <b>L.W.</b>	133	240	16.0	4.0	15.000

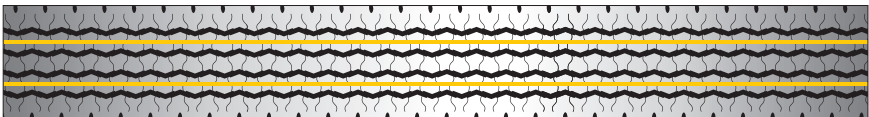
Z LUG					
Name	Length (inch)	Base width (mm)	Tread depth (mm)	Base thickness (mm)	Approx. weight (kgs)
295/80 R 22.5	128	250	14.5	3.5	13.500
295/80 R 22.5	128	240	16.0	4.0	13.700
10.00 R 20	128	235	14.0	3.5	11.900
10.00 R 20	128	230	14.0	3.5	11.900
10.00 R 20	128	225	16.0	4.0	13.100
10.00 R 20	128	220	16.0	4.0	13.000
10.00 R 20 <b>L.W.</b>	128	220	15.5	4.0	11.800
10.00 R 20	128	215	16.0	4.0	13.000
10.00 R 20	127	210	16.0	4.0	12.000
10.00 R 20	127	205	14.0	3.0	10.700
9.00 R 20	124	195	15.0	4.0	11.100
9.00 R 20 <b>M.W.</b>	124	195	14.0	3.5	10.100
9.00 R 20	124	190	15.0	3.5	10.200
8.25 R 20	118	177	13.0	3.5	8.300
9.00 x 16	111	190	15.0	3.5	9.200
8.25 R 16	103	177	13.0	3.5	7.300
7.50 R 16	99	160	13.0	3.0	6.000
6.00 x 16	90	124	12.0	3.0	3.800
MARUTI / ACE	66	124	12.0	3.0	2.800

M-34 CURVED					
Name	Length (inch)	Base width (mm)	Tread depth (mm)	Base thickness (mm)	Approx. weight (kgs)
315/80 R 22.5	131	255	14.5	3.5	15.400
295/80 R 22.5	130	240	14.0	3.5	14.000
10.00 R 20	130	230	13.5	3.5	12.300
10.00 R 20	130	220	14.0	3.5	12.800



CROSS SECTION

## RADIAL SPECIAL

M 9					
Name	Length (inch)	Base width (mm)	Tread depth (mm)	Base thickness (mm)	Approx. weight (kgs)
315/80 R 22.5	129	270	13.0	3.5	14.200
315/80 R 22.5	129	260	13.0	3.5	13.900
295/80 R 22.5	129	250	13.0	3.5	13.200
295/80 R 22.5	129	240	13.0	3.5	12.600
10.00 R 20	129	230	13.0	3.3	11.400
10.00 R 20	129	220	13.0	3.0	10.900
10.00 R 20	129	215	13.0	3.0	10.800

- Over 1 lakh kilometers on good roads
- Use only for RADIAL tyres

## RIB DESIGNS

AJAX					
Name	Length (inch)	Base width (mm)	Tread depth (mm)	Base thickness (mm)	Approx. weight (kgs)
10.00 x 20	128	215	13.5	3.6	11.800
10.00 x 20 <b>Super</b>	128	210	16.5	4.0	13.800
10.00 x 20	127	208	13.5	3.6	11.500
10.00 x 20 <b>Super</b>	128	205	13.0	4.0	11.400
10.00 x 20	127	205	12.0	3.5	10.200
10.00 x 20	127	196	15.0	3.5	11.800
9.00 x 20 <b>L.W.</b>	124	194	12.0	3.0	9.300
9.00 x 20	124	190	14.5	3.5	10.800
9.00 x 20 <b>Super</b>	124	187	17.5	4.0	12.800
9.00 x 20	124	187	14.0	3.5	10.500
9.00 x 20 <b>Bus</b>	124	186	13.5	3.5	10.100
9.00 x 20 <b>L.W.</b>	124	186	11.0	3.0	8.300
8.25 x 20	118	175	13.5	3.5	9.300
8.25 x 20	118	168	13.5	3.5	8.700
8.25 x 20	118	165	12.5	3.0	8.100
8.25 x 20	116	165	12.5	3.0	7.900
8.25 x 20 <b>L.W.</b>	118	165	11.0	3.0	7.000
9.00 x 16	111	168	13.5	3.5	8.200
8.25 x 16	103	175	13.5	3.5	8.100
8.25 x 16	103	168	13.5	3.5	7.600
8.25 x 16	103	165	12.5	3.0	7.000
8.25 x 16 <b>L.W.</b>	103	165	11.0	3.0	6.000
7.50 x 16	99	156	13.0	3.5	6.400
7.50 x 16 <b>L.W.</b>	99	156	11.0	3.0	5.500
7.50 x 16	99	150	11.0	3.2	5.500
7.50 x 16 <b>L.W.</b>	99	150	10.0	3.0	5.000
F 78 x 15	87	156	13.0	3.5	5.600
7.00 x 15	93	150	11.0	3.2	5.100
7.00 x 15 <b>L.W.</b>	93	150	10.0	3.0	4.700
7.00 x 15	93	140	11.5	3.0	4.800
DOST	82	140	11.5	3.0	4.200
6.00 x 16	90	130	13.0	2.5	4.500
6.00 x 16	90	125	11.0	3.0	4.000
6.00 x 16	90	120	11.0	3.0	3.900
MARUTI / ACE	66	125	11.0	3.0	2.900
MARUTI / ACE	66	102	8.5	3.0	2.000
4.50 x 10	60	102	8.5	3.0	1.800
4.50 x 10	60	100	8.5	2.5	1.600

ARIUS					
Name	Length (inch)	Base width (mm)	Tread depth (mm)	Base thickness (mm)	Approx. weight (kgs)
10.00 x 20	128	220	14.5	3.5	13.000
10.00 x 20 <b>L.W.</b>	128	220	13.5	3.5	11.800
10.00 x 20	128	215	14.5	3.5	12.800
10.00 x 20 <b>Super</b>	128	208	18.0	4.0	15.000
10.00 x 20	127	208	14.5	3.5	12.000
9.00 x 20	124	190	17.0	4.0	12.800

BUS MILER					
Name	Length (inch)	Base width (mm)	Tread depth (mm)	Base thickness (mm)	Approx. weight (kgs)
9.00 x 20	127	188	18.0	4.0	13.700

FLEET TRACK					
Name	Length (inch)	Base width (mm)	Tread depth (mm)	Base thickness (mm)	Approx. weight (kgs)
10.00 x 20	128	215	13.0	3.5	11.400
8.25 x 16	103	174	12.5	3.5	7.100
7.50 x 16	99	160	14.0	3.0	6.500
7.00 x 15	93	150	13.5	3.0	5.400
MARUTI / ACE	66	124	10.0	3.0	2.500

KH					
Name	Length (inch)	Base width (mm)	Tread depth (mm)	Base thickness (mm)	Approx. weight (kgs)
10.00 x 20	127	205	14.5	3.5	10.800

LONG HAUL					
Name	Length (inch)	Base width (mm)	Tread depth (mm)	Base thickness (mm)	Approx. weight (kgs)
9.00 x 20 <b>Super</b>	124	185	18.0	4.0	13.000

## RIB DESIGNS

M 11					
Name	Length (inch)	Base width (mm)	Tread depth (mm)	Base thickness (mm)	Approx. weight (kgs)
10.00 x 20	127	205	12.5	3.5	10.000



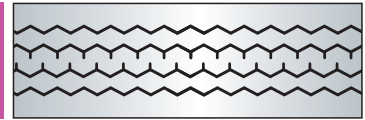
NH					
Name	Length (inch)	Base width (mm)	Tread depth (mm)	Base thickness (mm)	Approx. weight (kgs)
10.00 x 20	128	204	14.0	4.0	11.700



MERCURY					
Name	Length (inch)	Base width (mm)	Tread depth (mm)	Base thickness (mm)	Approx. weight (kgs)
10.00 x 20	128	215	13.0	3.0	11.300
10.00 x 20	128	205	12.5	3.5	10.700
9.00 x 20	124	194	13.5	3.5	10.600
9.00 x 20	124	190	16.0	4.0	11.700
8.25 x 20	118	176	12.0	3.5	8.200
8.25 x 20	118	170	11.0	3.0	7.100
8.25 x 16	103	176	12.0	3.5	7.200
8.25 x 16	103	170	11.0	3.0	6.200
7.50 x 16	99	160	11.0	3.5	6.000
MARUTI / ACE	66	123	10.0	3.0	2.600



OLYMPUS					
Name	Length (inch)	Base width (mm)	Tread depth (mm)	Base thickness (mm)	Approx. weight (kgs)
8.25 x 20	118	168	13.5	3.0	8.000
8.25 x 16	103	168	13.5	3.0	7.000
7.00 x 15	93	150	10.0	3.0	4.600



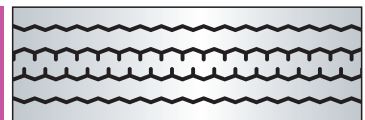
ORION					
Name	Length (inch)	Base width (mm)	Tread depth (mm)	Base thickness (mm)	Approx. weight (kgs)
10.00 x 20	127	205	13.5	3.0	10.900



M RIB					
Name	Length (inch)	Base width (mm)	Tread depth (mm)	Base thickness (mm)	Approx. weight (kgs)
10.00 x 20	128	210	13.0	3.5	11.300
10.00 x 20	128	205	13.0	3.5	11.000
9.00 x 20	124	194	13.5	3.5	10.400
8.25 x 20	118	175	12.5	3.0	8.100
8.25 x 16	103	175	12.5	3.0	7.100
8.25 x 16	103	165	12.0	3.0	6.500
7.50 x 16	99	160	11.0	3.0	5.500
7.50 x 16	99	150	11.0	3.0	5.300
7.00 x 15	93	150	11.0	3.0	5.000
<b>165 D 13</b>	<b>77</b>	<b>138</b>	<b>10.0</b>	<b>3.0</b>	<b>3.400</b>
MARUTI / ACE	66	124	10.0	3.0	2.600
4.50 x 10	60	104	10.0	2.5	1.900



REVVER					
Name	Length (inch)	Base width (mm)	Tread depth (mm)	Base thickness (mm)	Approx. weight (kgs)
10.00 x 20	128	205	13.5	3.5	11.500
9.00 x 20	124	194	13.0	3.5	10.500



SONATA					
Name	Length (inch)	Base width (mm)	Tread depth (mm)	Base thickness (mm)	Approx. weight (kgs)
10.00 x 20	128	210	13.0	3.5	11.300
10.00 x 20	127	205	12.0	3.0	9.600





# LUG & SEMILUG DESIGNS

ARYA					
Name	Length (inch)	Base width (mm)	Tread depth (mm)	Base thickness (mm)	Approx. weight (kgs)
10.00 x 20	128	220	15.5	4.0	12.600

CROSS COUNTRY					
Name	Length (inch)	Base width (mm)	Tread depth (mm)	Base thickness (mm)	Approx. weight (kgs)
10.00 x 20	127	215	15.0	3.5	12.000
10.00 x 20 <b>Super</b>	128	205	14.5	4.0	11.200
10.00 x 20	127	205	13.5	3.6	10.500

CROSS LUG					
Name	Length (inch)	Base width (mm)	Tread depth (mm)	Base thickness (mm)	Approx. weight (kgs)
10.00 x 20	128	210	14.0	4.0	12.300
10.00 x 20	127	205	14.0	3.5	11.400
10.00 x 20	127	197	15.0	4.0	11.500
9.00 x 20	124	190	14.0	3.5	10.100
9.00 x 20	125	187	15.0	4.0	11.200

GRIP MASTER					
Name	Length (inch)	Base width (mm)	Tread depth (mm)	Base thickness (mm)	Approx. weight (kgs)
10.00 x 20	127	205	14.0	4.0	11.000

ID MINES					
Name	Length (inch)	Base width (mm)	Tread depth (mm)	Base thickness (mm)	Approx. weight (kgs)
10.00 x 20	130	230	19.0	4.0	15.500
10.00 x 20	130	225	18.0	4.0	14.300
10.00 x 20	127	205	16.0	4.0	12.000
<b>7.50 x 16</b>	<b>99</b>	<b>150</b>	<b>12.0</b>	<b>3.5</b>	<b>5.200</b>
<b>7.00 x 15</b>	<b>93</b>	<b>150</b>	<b>12.0</b>	<b>3.5</b>	<b>4.900</b>


L 01					
Name	Length (inch)	Base width (mm)	Tread depth (mm)	Base thickness (mm)	Approx. weight (kgs)
10.00 x 20	127	215	14.0	4.0	11.800
10.00 x 20	127	205	14.0	4.0	11.400
<b>8.25 x 16</b>	<b>103</b>	<b>165</b>	<b>11.0</b>	<b>3.5</b>	<b>5.900</b>
<b>7.50 x 16</b>	<b>99</b>	<b>165</b>	<b>11.0</b>	<b>3.5</b>	<b>5.700</b>


LOG LUGGER					
Name	Length (inch)	Base width (mm)	Tread depth (mm)	Base thickness (mm)	Approx. weight (kgs)
12.00 x 24	145.5	240	21.0	4.0	19.700
10.00 x 20	128	220	17.0	4.0	13.300
10.00 x 20	128	210	15.0	4.0	11.000


LUG MASTER					
Name	Length (inch)	Base width (mm)	Tread depth (mm)	Base thickness (mm)	Approx. weight (kgs)
10.00 x 20	128	210	17.0	4.0	14.500
10.00 x 20 <b>L.W.</b>	128	210	13.5	3.5	11.700
10.00 x 20	128	208	13.5	3.5	11.000
10.00 x 20	128	207	16.0	4.0	13.700
10.00 x 20	127	205	14.0	4.0	11.600
9.00 x 20 <b>L.W.</b>	124	190	13.5	3.5	10.000
8.25 x 20	118	175	11.0	3.5	7.400
8.25 x 16	103	175	11.0	3.5	6.400
7.50 x 16	99	160	12.5	3.5	6.400
7.50 x 16	99	150	11.0	3.0	5.100
7.00 x 15	93	150	11.0	3.0	4.800


LZT					
Name	Length (inch)	Base width (mm)	Tread depth (mm)	Base thickness (mm)	Approx. weight (kgs)
10.00 x 20	127	210	15.0	3.5	12.400
10.00 x 20	127	205	16.0	4.0	12.700


# LUG & SEMILUG DESIGNS


MC					
Name	Length (inch)	Base width (mm)	Tread depth (mm)	Base thickness (mm)	Approx. weight (kgs)
11.00 x 20	130	220	15.5	3.5	13.100
10.00 x 20	128	207	15.5	3.5	12.100
9.00 x 20	124	190	15.0	3.5	10.600
9.00 x 16	111	190	15.0	3.5	9.500


MINES SPECIAL					
Name	Length (inch)	Base width (mm)	Tread depth (mm)	Base thickness (mm)	Approx. weight (kgs)
12.00 x 24	147	240	15.0	4.0	16.500
10.00 x 20	128	225	15.0	4.0	13.600
10.00 x 20	128	220	15.0	4.0	13.500
10.00 x 20	128	215	16.0	4.0	13.100
10.00 x 20	127	205	14.0	3.5	10.700
9.00 x 20	124	190	14.0	3.5	9.800

MINES SUPER					
Name	Length (inch)	Base width (mm)	Tread depth (mm)	Base thickness (mm)	Approx. weight (kgs)
10.00 x 20	127	205	14.0	3.5	11.000
9.00 x 20	124	190	15.0	3.5	10.500
8.25 x 20	121	180	13.5	3.5	8.900
8.25 x 20	118	180	13.5	3.5	8.700
8.25 x 20	118	175	13.5	3.5	8.500
8.25 x 20	118	168	13.5	3.5	8.100
9.00 x 16	111	190	15.0	3.5	9.300
8.25 x 16	104	180	13.5	3.5	7.700
8.25 x 16	103	175	13.5	3.5	7.500
8.25 x 16	103	168	13.5	3.5	7.100
7.50 x 16	100	160	14.0	3.8	6.600

MBR					
Name	Length (inch)	Base width (mm)	Tread depth (mm)	Base thickness (mm)	Approx. weight (kgs)
<b>10.00 x 20</b>	<b>128</b>	<b>215</b>	<b>18.0</b>	<b>4.0</b>	<b>15.000</b>
10.00 x 20	128	205	18.0	4.0	14.200
<b>10.00 x 20 L.W.</b>	<b>128</b>	<b>205</b>	<b>15.0</b>	<b>4.0</b>	<b>12.200</b>

M T					
Name	Length (inch)	Base width (mm)	Tread depth (mm)	Base thickness (mm)	Approx. weight (kgs)
<b>12.00 x 24</b>	<b>146</b>	<b>240</b>	<b>24.0</b>	<b>5.0</b>	<b>22.200</b>
<b>11.00 x 20</b>	<b>130</b>	<b>230</b>	<b>18.0</b>	<b>4.0</b>	<b>14.600</b>
<b>10.00 x 20</b>	<b>128</b>	<b>230</b>	<b>18.0</b>	<b>4.0</b>	<b>14.400</b>
<b>10.00 x 20</b>	<b>128</b>	<b>210</b>	<b>18.0</b>	<b>4.0</b>	<b>13.100</b>

MM					
Name	Length (inch)	Base width (mm)	Tread depth (mm)	Base thickness (mm)	Approx. weight (kgs)
10.00 x 20	128	215	16.0	4.0	12.800
10.00 x 20	128	205	16.0	4.0	12.100

M TITAN					
Name	Length (inch)	Base width (mm)	Tread depth (mm)	Base thickness (mm)	Approx. weight (kgs)
12.00 x 24 <b>Super</b>	147	240	21.0	4.0	20.700
12.00 x 24	147	240	17.0	4.0	17.400
12.00 x 24 <b>L.W.</b>	147	240	15.0	4.0	15.800
11.00 x 20 <b>L.W.</b>	133	240	15.0	4.0	14.300
11.00 x 20	133	220	16.0	4.0	13.900
10.00 x 20	130	220	16.0	4.0	13.700
10.00 x 20	128	215	14.5	3.5	11.800
10.00 x 20	128	210	14.5	3.5	11.400
10.00 x 20	128	205	14.0	3.5	11.300
9.00 x 20	124	190	15.5	3.5	10.600
8.25 x 20	118	175	13.5	3.5	8.300
8.25 x 16	103	175	13.5	3.5	7.300
7.50 x 16	99	160	12.5	3.5	6.100

# LUG & SEMILUG DESIGNS

NMS					
Name	Length (inch)	Base width (mm)	Tread depth (mm)	Base thickness (mm)	Approx. weight (kgs)
8.25 x 16	103	168	13.0	3.5	7.000
7.50 x 16	99	168	13.0	3.5	6.700

RM 1					
Name	Length (inch)	Base width (mm)	Tread depth (mm)	Base thickness (mm)	Approx. weight (kgs)
8.25 x 20	118	175	14.5	3.5	8.700
8.25 x 16	103	175	14.5	3.5	7.600
7.50 x 16	99	160	13.0	3.5	6.400
7.50 x 16	99	150	13.0	3.0	5.700
7.00 x 15	93	150	13.0	3.0	5.400
7.00 x 15	93	140	11.5	3.0	4.600

ROADSTER					
Name	Length (inch)	Base width (mm)	Tread depth (mm)	Base thickness (mm)	Approx. weight (kgs)
10.00 x 20	127	210	16.0	4.0	12.500
10.00 x 20	128	205	17.0	3.7	12.500
10.00 x 20 <b>M.W.</b>	128	205	16.0	3.7	12.000
10.00 x 20 <b>L.W.</b>	127	205	14.0	4.0	11.000
10.00 x 20	127	196	16.0	3.8	11.700
9.00 x 20	124	196	16.0	3.8	11.500
9.00 x 20	124	195	14.0	4.0	10.500
9.00 x 20	124	186	15.5	3.0	10.100
9.00 x 20 <b>L.W.</b>	124	186	13.5	3.0	9.100
8.25 x 20	121	177	15.0	3.5	9.300
8.25 x 20	118	177	15.0	3.5	9.100
8.25 x 20	118	172	14.0	3.5	8.500
9.00 x 16 <b>L.W.</b>	111	186	13.5	3.0	8.100
8.25 x 16	103	177	15.0	3.5	8.000
8.25 x 16	103	172	14.0	3.5	7.400
8.25 x 16	103	165	12.5	3.0	6.300
7.50 x 16	99	160	12.0	3.0	5.800
7.00 x 15	93	150	11.5	3.0	5.000

SLM					
Name	Length (inch)	Base width (mm)	Tread depth (mm)	Base thickness (mm)	Approx. weight (kgs)
10.00 x 20	128	210	13.0	3.5	10.900
10.00 x 20	128	205	14.0	3.5	11.200
8.25 x 20	118	175	13.0	4.0	8.100
8.25 x 16	103	175	13.0	4.0	7.100
7.50 x 16	99	160	12.0	3.5	6.000
7.50 x 16	99	150	11.0	3.0	5.200
7.00 x 15	93	150	11.0	3.0	4.800
165 D 13	77	135	9.0	3.0	3.000
MARUTI / ACE	66	120	10.0	3.0	2.400

SEMI LUG					
Name	Length (inch)	Base width (mm)	Tread depth (mm)	Base thickness (mm)	Approx. weight (kgs)
11.00 x 20 <b>Super</b>	133	215	16.0	3.5	13.600
10.00 x 20	128	215	14.0	3.5	12.300
10.00 x 20	127	210	15.0	3.5	12.000
10.00 x 20	128	208	17.0	4.0	13.400
10.00 x 20	128	205	13.5	3.5	11.300
10.00 x 20 <b>L.W.</b>	127	205	12.5	3.5	10.400
10.00 x 20	127	197	14.0	4.0	11.000
9.00 x 20	124	197	14.0	4.0	10.700
9.00 x 20 <b>Super</b>	125	187	18.0	4.0	11.900
9.00 x 20	125	187	14.5	4.0	10.200
9.00 x 20 <b>M.W.</b>	124	187	13.5	3.0	9.200
8.25 x 20	118	175	14.5	3.5	9.000
8.25 x 20	118	168	14.5	4.0	9.100
8.25 x 20	118	165	11.5	3.0	7.100
9.00 x 16 <b>M.W.</b>	111	187	13.5	3.0	8.100
8.25 x 16	103	175	14.5	3.5	8.000
8.25 x 16	103	168	14.5	4.0	7.900
8.25 x 16	103	165	11.5	3.0	6.200
7.50 x 16	99	160	14.0	4.0	7.100
7.50 x 16 <b>L.W.</b>	99	160	11.5	3.5	6.000
7.50 x 16	99	155	11.5	3.0	5.500
7.50 x 16	99	150	13.0	4.0	6.100
7.50 x 16 <b>L.W.</b>	99	150	11.0	3.0	5.000
6.00 x 16	90	132	12.5	3.0	4.600
6.00 x 16	90	124	13.0	3.0	4.400

## LUG & SEMILUG DESIGNS



Name	Length (inch)	Base width (mm)	Tread depth (mm)	Base thickness (mm)	Approx. weight (kgs)
12.00 x 24	145.5	240	15.0	4.0	16.000



Name	Length (inch)	Base width (mm)	Tread depth (mm)	Base thickness (mm)	Approx. weight (kgs)
10.00 x 20	128	210	17.0	4.0	13.500

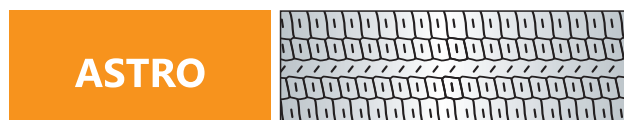


Name	Length (inch)	Base width (mm)	Tread depth (mm)	Base thickness (mm)	Approx. weight (kgs)
10.00 x 20	128	240	18.0	4.0	15.900
10.00 x 20	128	230	18.0	4.0	14.900
10.00 x 20	128	225	18.0	4.0	14.100
10.00 x 20	128	220	15.0	4.0	13.400
10.00 x 20	128	215	16.0	4.0	12.600
10.00 x 20 L.W.	128	215	14.0	3.5	11.600
10.00 x 20	128	210	15.5	3.5	12.200
10.00 x 20 L.W.	128	210	13.5	3.5	10.900
10.00 x 20	127	205	14.0	3.5	11.400
10.00 x 20 M.W.	127	205	12.5	3.0	9.900
10.00 x 20	127	200	15.0	3.5	11.300
9.00 x 20 M.W.	124	195	14.0	3.5	10.600
9.00 x 20 L.W.	124	195	12.0	3.0	9.000
9.00 x 20	124	187	15.0	3.5	10.700
9.00 x 20 M.W.	124	187	13.5	3.0	9.400
9.00 x 20 L.W.	124	187	12.0	3.0	8.500
8.25 x 20	118	170	13.0	3.0	7.600
9.00 x 16 L.W.	111	195	12.0	3.0	8.000
9.00 x 16 L.W.	111	187	12.0	3.0	7.600
8.25 x 16	103	170	13.0	3.0	6.700
7.50 x 16	99	158	12.2	3.3	6.000
7.50 x 16	99	150	12.5	3.5	6.100
7.50 x 16 L.W.	99	150	11.5	3.0	5.500
7.00 x 15	93	145	11.0	3.0	4.700

## LCV & CAR DESIGNS



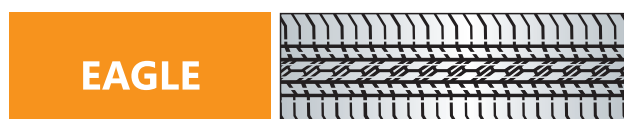
Name	Length (inch)	Base width (mm)	Tread depth (mm)	Base thickness (mm)	Approx. weight (kgs)
7.00 x 15	93	145	11.0	3.0	4.700
DOST	82	145	11.0	3.0	4.300



Name	Length (inch)	Base width (mm)	Tread depth (mm)	Base thickness (mm)	Approx. weight (kgs)
CAR	87	176	12.0	3.0	5.800
F 78 x 15	87	165	10.0	3.5	4.600
F 78 x 15	87	156	12.0	3.0	5.000
F 78 x 15 L.W.	87	156	9.5	2.5	4.100
7.50 x 16	99	150	12.5	3.0	5.500
7.00 x 15 L.W.	93	150	9.5	2.5	3.800
SPACIO	90	138	10.0	3.0	4.000
6.00 x 16	90	120	10.5	2.0	3.200
CAR	82	138	10.0	3.0	3.700
MARUTI / ACE	66	125	11.0	2.5	2.800
MARUTI / ACE	66	120	10.5	2.0	2.300



Name	Length (inch)	Base width (mm)	Tread depth (mm)	Base thickness (mm)	Approx. weight (kgs)
4.00 x 8	50	84	8.0	2.6	1.100



Name	Length (inch)	Base width (mm)	Tread depth (mm)	Base thickness (mm)	Approx. weight (kgs)
6.00 x 16	90	145	9.0	3.5	3.900
FIAT	76	135	9.0	3.0	2.900
MARUTI / ACE	66	125	9.0	3.0	2.200

## LCV & CAR DESIGNS

CAR M					
Name	Length (inch)	Base width (mm)	Tread depth (mm)	Base thickness (mm)	Approx. weight (kgs)
AMBASSADOR	82	118	11.0	3.0	3.500
AMBASSADOR	82	114	9.7	2.6	2.900
MARUTI / ACE	66	118	11.0	3.0	2.800
MARUTI / ACE	66	95	8.5	2.5	1.700
MARUTI / ACE	66	91	8.0	2.0	1.500
4.50 x 10	60	107	12.0	3.0	2.500
4.50 x 10 <b>Super</b>	60	102	12.0	2.5	2.100
4.50 x 10	60	102	10.0	2.0	1.800
4.50 x 10	60	95	8.5	2.5	1.600
4.00 x 8	50	86	8.5	3.5	1.400
4.00 x 10	56	85	8.0	3.0	1.300
4.00 x 8	50	85	8.0	3.0	1.200

IRR					
Name	Length (inch)	Base width (mm)	Tread depth (mm)	Base thickness (mm)	Approx. weight (kgs)
CAR	87	190	8.5	3.0	4.600

JEEP					
Name	Length (inch)	Base width (mm)	Tread depth (mm)	Base thickness (mm)	Approx. weight (kgs)
6.00 x 16	90	132	11.0	3.5	4.100
6.00 x 16	90	123	12.0	3.0	3.900

M 35					
Name	Length (inch)	Base width (mm)	Tread depth (mm)	Base thickness (mm)	Approx. weight (kgs)
<b>CAR</b>	<b>93</b>	<b>205</b>	<b>9.0</b>	<b>3.5</b>	<b>5.600</b>
CAR	93	180	10.0	4.0	5.200
CAR	87	170	10.0	4.0	4.800


MHW					
Name	Length (inch)	Base width (mm)	Tread depth (mm)	Base thickness (mm)	Approx. weight (kgs)
7.50 x 16	99	158	11.5	3.3	5.500
7.00 x 15	93	148	11.5	3.3	5.000
7.00 x 15	93	138	11.5	3.3	4.700


MTR					
Name	Length (inch)	Base width (mm)	Tread depth (mm)	Base thickness (mm)	Approx. weight (kgs)
7.50 x 16	99	152	10.0	3.0	4.900
7.00 x 15	93	152	10.0	3.0	4.600
7.00 x 15	93	140	10.0	3.0	4.000
DOST	82	140	10.0	3.0	3.500
MARUTI / ACE	66	125	10.0	3.0	2.600
4.50 x 10	60	105	10.0	3.0	1.900


NEW TRACTOR FRONT					
Name	Length (inch)	Base width (mm)	Tread depth (mm)	Base thickness (mm)	Approx. weight (kgs)
7.50 x 16	99	160	14.0	4.0	5.500
6.00 x 16	90	132	13.5	3.5	4.100
6.00 x 16	90	124	15.0	4.0	3.500


OPTIMA					
Name	Length (inch)	Base width (mm)	Tread depth (mm)	Base thickness (mm)	Approx. weight (kgs)
6.00 x 16	90	120	8.0	2.5	3.000
6.00 x 16	90	115	10.0	2.5	3.300
AMBASSADOR	82	120	8.0	2.5	2.600
AMBASSADOR	82	115	10.0	2.5	3.000
MARUTI / ACE	66	120	8.0	2.5	2.100
MARUTI / ACE	66	115	10.0	2.5	2.400
MARUTI / ACE	66	95	8.0	2.5	1.700
4.50 x 10	60	95	8.0	2.5	1.500


## LCV & CAR DESIGNS

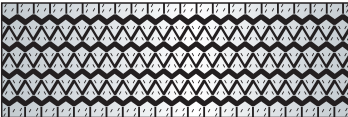
BOLT					
Name	Length (inch)	Base width (mm)	Tread depth (mm)	Base thickness (mm)	Approx. weight (kgs)
CAR	90	175	11.5	3.0	5.200
CAR	87	175	11.5	3.0	5.000


PCM					
Name	Length (inch)	Base width (mm)	Tread depth (mm)	Base thickness (mm)	Approx. weight (kgs)
MARUTI / ACE	66	125	7.0	2.5	1.800

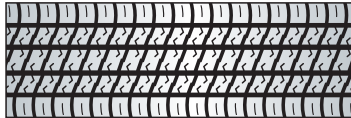
PE					
Name	Length (inch)	Base width (mm)	Tread depth (mm)	Base thickness (mm)	Approx. weight (kgs)
MARUTI / ACE	66	100	8.0	3.0	1.800
4.50 x 10	60	100	8.0	3.0	1.600


PICKUP					
Name	Length (inch)	Base width (mm)	Tread depth (mm)	Base thickness (mm)	Approx. weight (kgs)
7.00 x 15	93	145	11.0	3.0	4.500


PZ					
Name	Length (inch)	Base width (mm)	Tread depth (mm)	Base thickness (mm)	Approx. weight (kgs)
MARUTI / ACE	66	125	8.0	2.5	2.100


RADIAL					
Name	Length (inch)	Base width (mm)	Tread depth (mm)	Base thickness (mm)	Approx. weight (kgs)
TATA ESTATE	87	174	12.0	3.0	5.300
AMBASSADOR	82	138	10.0	2.5	3.400
MARUTI / ACE	66	128	10.0	2.5	2.500

R 3					
Name	Length (inch)	Base width (mm)	Tread depth (mm)	Base thickness (mm)	Approx. weight (kgs)
F 78 x 15	87	170	8.0	3.5	3.600
7.00 x 15	93	140	9.0	2.5	3.000


R 4					
Name	Length (inch)	Base width (mm)	Tread depth (mm)	Base thickness (mm)	Approx. weight (kgs)
CAR	93	185	10.0	3.0	5.200
CAR	87	173	11.0	3.0	4.900
CAR	93	165	10.0	2.5	4.400
CAR	90	165	10.0	2.5	4.300
CAR	87	165	10.0	2.5	4.100
CAR	90	145	10.0	3.0	3.800
CAR	66	115	10.0	2.5	2.100
CAR	60	102	10.0	2.5	2.000


SRM					
Name	Length (inch)	Base width (mm)	Tread depth (mm)	Base thickness (mm)	Approx. weight (kgs)
7.00 x 15	93	145	10.5	3.0	4.500
7.00 x 15	93	140	9.0	3.0	3.900
DOST	82	145	10.5	3.0	4.000
DOST	82	140	9.0	3.0	3.400


TRACTOR FRONT					
Name	Length (inch)	Base width (mm)	Tread depth (mm)	Base thickness (mm)	Approx. weight (kgs)
6.00 x 16	90	136	14.0	4.0	3.600
6.00 x 16	90	130	12.0	3.5	3.600

TRAVELLER					
Name	Length (inch)	Base width (mm)	Tread depth (mm)	Base thickness (mm)	Approx. weight (kgs)
215/75 R 15	84	180	10.0	3.0	4.600


# SPECIAL APPLICATIONS


BSGL					
Name	Length (inch)	Base width (mm)	Tread depth (mm)	Base thickness (mm)	Approx. weight (kgs)
Spl. Application	145	415	24.0	6.0	34.700
Spl. Application	134	365	20.0	5.0	23.000
Spl. Application	134	300	20.0	5.0	19.300
Spl. Application	155	240	20.0	5.0	16.900


GPZH					
Name	Length (inch)	Base width (mm)	Tread depth (mm)	Base thickness (mm)	Approx. weight (kgs)
12.00 x 24	147	270	32.0	4.0	31.000
12.00 x 24 L.W.	147	270	20.0	4.0	21.600
12.00 x 20 L.W.	136	270	20.0	4.0	20.000
12.00 x 24	145.5	260	19.0	4.0	20.000
12.00 x 24	147	250	22.0	4.0	22.600
12.00 x 24 L.W.	145.5	250	19.0	4.0	19.600
11.00 x 20 M.W.	133	240	21.0	4.0	16.800
12.00 x 24 L.W.	145.5	240	19.0	3.5	18.100
12.00 x 24	147	232	22.0	4.0	20.300
11.00 x 20	133	230	21.0	4.0	15.900
12.00 x 24	147	230	20.0	4.0	17.400
12.00 x 24	145.5	225	20.0	4.0	18.200
10.00 x 20	130	215	19.0	4.0	14.100
<b>10.00 x 20</b>	<b>128</b>	<b>210</b>	<b>15.5</b>	<b>3.5</b>	<b>11.500</b>


M PORT-1					
Name	Length (inch)	Base width (mm)	Tread depth (mm)	Base thickness (mm)	Approx. weight (kgs)
<b>18.00 x 25</b>	<b>189*</b>	<b>440</b>	<b>52.0</b>	<b>7.0</b>	<b>102.000</b>
<b>18.00 x 25</b>	<b>190</b>	<b>438</b>	<b>45.0</b>	<b>7.0</b>	<b>91.500</b>


\* Available as 63 inch x 3 = 189 inch


SPT 9					
Name	Length (inch)	Base width (mm)	Tread depth (mm)	Base thickness (mm)	Approx. weight (kgs)
Spl. Application	130	350	23.0	5.0	22.800
Spl. Application	128	350	23.0	5.0	22.500

BS-16					
Name	Length (inch)	Base width (mm)	Tread depth (mm)	Base thickness (mm)	Approx. weight (kgs)
Spl. Application	145	415	24.0	5.0	34.500
Spl. Application	134	365	20.0	5.0	26.200

GRML					
Name	Length (inch)	Base width (mm)	Tread depth (mm)	Base thickness (mm)	Approx. weight (kgs)
Spl. Application	157	320	20.0	4.0	24.900
Spl. Application	157	300	18.0	4.0	21.900
Spl. Application	142	300	18.0	4.0	19.800
Spl. Application	147	290	18.0	4.0	19.900

JCB					
Name	Length (inch)	Base width (mm)	Tread depth (mm)	Base thickness (mm)	Approx. weight (kgs)
<b>17.5 - 25</b>	<b>159</b>	<b>390</b>	<b>28.0</b>	<b>6.5</b>	<b>46.000</b>
14.00 - 25	166	315	27.0	5.5	39.000
12.5/80-18	114	285	16.0	4.0	14.700

GRTDL					
Name	Length (inch)	Base width (mm)	Tread depth (mm)	Base thickness (mm)	Approx. weight (kgs)
Spl. Application	413	240	17.0	4.0	43.000
Spl. Application	413	230	17.0	4.0	41.000
Spl. Application	413	220	17.0	4.0	39.800

MZL					
Name	Length (inch)	Base width (mm)	Tread depth (mm)	Base thickness (mm)	Approx. weight (kgs)
Spl. Application	134	410	16.0	4.0	21.700
Spl. Application	134	390	16.0	4.0	20.800
Spl. Application	134	375	16.0	4.0	19.500
Spl. Application	109	330	16.0	4.0	14.000

## HALF SKIRT ENVELOPES (REGULAR) - STEAM BONDER

### To prevent envelope burst:

- ▶ 2" wicking tapes should be applied at 4 places for proper air bleeding between tyre and envelope. Wicking tape should protrude outside the envelope.
- ▶ Pre-inflate the tyres to between 20-30 psi to avoid distortion of the casing caused by the weight of the lid of the tread bonder.
- ▶ Maintain the differential pressure of 30 psi between steam pressure and tube air pressure especially at the end of the curing process.



Sl. No.	Product Code	Tyre Size (Suggested)
1	52 x 28*	14.00 x 25, 14.00 x 24, 14.00 R 24
2	46 x 28*	325/95 R 24, 12.00 R 24
3	46 x 22*	14.00 R 20
4	44 x 25*	12 R 24.5, 11 R 24.5, 12.00 x 24, 11.00 R 24, 13 R 22.5, 11.00 R 22, 12.00 R 20, 12.00 x 20
5	43 x 25*	385/65 R 22.5, 365/80 R 20
6	42 x 22*	315/80 R 22.5, 12 R 22.5, 11.00 R 20, 11.00 x 20
7	42 x 26*	295/80 R 22.5, 11 R 22.5, 295/90 R 20, 10.00 R 20, 10.00 x 20
8	40 x 25*	275/80 R 22.5, 10 R 22.5, 9.00 R 20, 9.00 x 20
9	38 x 25	8.25 x 20
10	35 x 20*	7.50 x 20, 9.00 x 16
11	32 x 19*	8.25 x 16, 6.50 x 20
12	31 x 18	7.50 x 16, 7.00 x 16, F78 x 15, 235/75 R 17.5, 225/75 R 17.5
13	29 x 19	6.00 x 16, 7.00 x 15, 6.70 x 15, 195 R 15, 215 R 14, 185/85 R 16, 235 R 16
14	26 x 17	185 D 14, 195 R 14, 5.90 x 15, 165/195/205/215/235/70 R 15, 185 R 15
15	25 x 16	5.20 x 14, 6.70 x 14, 175/80 R 13, 6.40 x 13, 155/175/185/195/215/70 R 14, 165 D 14
16	23 x 13*	145/80 R 13, 155/80 R 13, 165 D 13, 165/80 R 13, 175/70 R 13, 185/70 R 13, 195/70 R 13, 165/70 R 14, 155/80 R 15
17	21 x 12	4.50/5.65 x 12, 145 R 12, 155/80 D 12, 165/80 D 12, 145/70 R 13, 155/65 R 13, 155/70 R 13, 165/65 R 13
18	19 x 11*	4.50 x 10
19	17 x 08*	4.00 x 8

**Note:** All suggested envelope selections are to be used as a guide only. Variations in tyre sizes, tyre dimensions, precured tread designs and precured tread thickness may require a smaller or larger envelope size. In some instances it may be necessary to measure the built tyre to determine the correct envelope size.

28 **GREEN** envelope can be ordered for higher life. All our envelopes marked with \* are also available in **GREEN**.

## FULL SKIRT ENVELOPES (REGULAR) - ELECTRIC CHAMBER

- ▶ Install the envelope and make sure it is centered and straight on the tyre and the valve is over the wicking pad.
- ▶ Lubrication increases envelope life and keeps the envelope from sticking to cushion gum, splices or the tyre casing. Apply lubricant when you experience sticking, while the envelope is still hot.
- ▶ Rotate envelopes so that a hot envelope is allowed to cool between cures.



Sl. No.	Product Code	Tyre Size (Suggested)
1	52 x 21	14.00 x 25, 14.00 x 24, 14.00 R 24
2	46 x 22*	325/95 R 24, 12.00 R 24, 12.00 x 24
3	46 x 19	14.00 R 20
4	44 x 19*	11.00 R 24, 13 R 22.5, 12.00 R 22, 14/80 R 20, 12.00 R 20, 12.00 x 20
5	44 x 22*	12 R 24.5, 11 R 24.5, 315/80 R 22.5, 11.00 R 22
6	43 x 20*	385/65 R 22.5, 365/80 R 20
7	42 x 17*	11.00 R 20, 11.00 x 20
8	42 x 19*	295/80 R 22.5, 12 R 22.5, 11 R 22.5, 295/90 R 20, 10.00 R 20, 10.00 x 20
9	40 x 18*	275/80 R 22.5, 10 R 22.5, 9.00 R 20, 9.00 x 20
10	38 x 20	8.25 x 20
11	35 x 13*	9.00 x 16
12	35 x 16*	7.50 x 20, 6.50 x 20, 8.25 x 16
13	32 x 16*	7.50 x 16, 7.00 x 16, 235/75 R 17.5, 225/75 R 17.5
14	31 x 14*	7.00 x 15
15	28 x 16	6.00 x 16, F78 x 15, 195 R 15, 195/215 R 14, 215 R 15, 185/85 R 16, 235 R 16
16	26 x 16	5.90 x 15, 165 R 15, 5.20 x 14, 6.00 x 14, 165 R 14, 165 D 14
17	23 x 10*	145/80 R 13, 155/80 R 13, 165 D 13, 165/80 R 13, 175/70 R 13, 185/70 R 13, 195/70 R 13, 165/70 R 14, 155/80 R 15
18	22 x 11*	155/80 D 12, 165/80 D 12, 165/65 D 13, 145 R 13, 4.50 x 12, 5.65 x 12, 145 R 12
19	19 x 09*	4.50 x 10
20	17 x 08*	4.00 x 8

**Note:** All suggested envelope selections are to be used as a guide only.

**GREEN** envelope can be ordered for higher life. All our envelopes marked with \* are also available in **GREEN**.

## ARC / SNAP SEAL / FLEX SEAL SYSTEM



### Outer Envelope

Outer Envelope skirt length extends **2.0 inches** below the tyre bead on each side.

Sl. No.	Product Code	Tyre Size (Suggested)
1	46 x 15	325/95 R 24, 12.00 R 24
2	44 x 16	12 R 24.5, 11 R 24.5, 315/80 R 22.5, 10.00 R 22
3	44 x 14	11.00 R 24, 13 R 22.5, 11.00 R 22, 14/80 R 20, 11.00 R 20
4	44 x 13	12.00 R 22, 12.00 R 20
5	43 x 14	385/65 R 22.5, 365/80 R 20
6	42 x 14	315/75 R 22.5, 295/80 R 22.5, 295/75 R 22.5, 12 R 22.5, 295/90 R 20, 10.00 R 20
7	42 x 15	315/70 R 22.5, 305/75 R 22.5, 305/70 R 22.5, 275/80 R 22.5, 11 R 22.5
8	40 x 13	275/70 R 22.5, 265/70 R 22.5, 10 R 22.5, 9.00 R 20, 305/70 R 19.5
9	35 x 12 <b>RC</b>	7.50 R 20, 285/70 R 19.5, 265/70 R 19.5, 9.00 R 16, 8.25 R 16, 8.25 R 15
10	35 x 12 <b>ST</b>	7.00 R 20, 6.50 R 20, 245/70 R 19.5
11	32 x 11	245/65 R 19.5, 235/70 R 19.5, 245/70 R 17.5, 235/75 R 17.5, 9.5 R 17.5, 10 R 16.5, 265/75 R 16, 245/75 R 16, 235/85 R 16, 215/85 R 16, 7.50 R 16, 7.50 R 15, 10.00 R 15 <b>LT</b>
12	32 x 13	225/70 R 19.5, 225/75 R 17.5, 215/75 R 17.5, 205/75 R 17.5, 7.00 R 16, 7.00 R 15
13	23 x 07	6.50-10
14	22 x 09	6.00-9
15	19 x 07	4.50-10, 5.00-8
16	17 x 06	4.00-8

**Note:** All suggested envelope selections are to be used as a guide only.

## DOUBLE ENVELOPE SYSTEM

The double envelope system can be used only with radial tyres. When this system is used no rim, curing bag or flap is required. This makes the work easier.

As vacuum and chamber pressure act evenly on all areas of the tyre the retreading process is better.

In the rim and curing bag system heat penetration is from outside whereas in the Double Envelope System heat penetrates from both sides. Hence curing time can be reduced improving productivity and reducing cost.



### Outer Envelope

Sl. No.	Product Code	Tyre Size (Suggested)
1	52 x 28*	14.00 R 24
2	46 x 22*	445/65 R 22.5, 425/65 R 22.5, 14.00 R 20
3	44 x 22*	325/95 R 24, 12.00 R 24, 11.00 R 24, 12.00 R 22
4	44 x 25*	12 R 24.5, 13 R 22.5, 14/80 R 20, 12.00 R 20
5	44 x 19*	445/65 R 19.5
6	43 x 25*	385/65 R 22.5, 365/80 R 20
7	42 x 22*	11 R 24.5, 315/80 R 22.5, 315/75 R 22.5, 315/70 R 22.5, 12 R 22.5, 11.00 R 22, 11.00 R 20
8	42 x 25*	295/80 R 22.5, 11 R 22.5, 10.00 R 22
9	40 x 18*	305/75 R 22.5, 305/70 R 22.5, 295/75 R 22.5, 295/90 R 20, 10.00 R 20
10	40 x 21*	275/80 R 22.5, 275/70 R 22.5, 10 R 22.5
11	40 x 25*	9.00 R 20
12	38 x 22	10.00 R 15, <b>TR/LB</b>
13	38 x 25	265/70 R 22.5, 8.25 R 20
14	38 x 20	445/45 R 19.5, 305/70 R 19.5
15	35 x 20*	7.50 R 20, 7.00 R 20, 6.50 R 20, 265/70 R 19.5
16	35 x 16*	285/70 R 19.5, 9.00 R 16
17	32 x 16*	245/70 R 19.5, 9.5 R 17.5, 10 R 16.5, 265/75 R 16, 8.25 R 16
18	32 x 19*	245/65 R 19.5, 235/70 R 19.5, 225/70 R 19.5, 245/75 R 16, 235/85 R 16, 215/85 R 16, 10.00 R 15 <b>LT</b> , 8.25 R 15
19	31 x 18	245/70 R 17.5, 235/75 R 17.5, 225/75 R 17.5, 215/75 R 17.5, 205/75 R 17.5, 7.50 R 16, 7.00 R 16, 7.50 R 15
20	28 x 16	225/75 R 16, 215/75 R 16, 6.50 R 16, 6.00 R 16, 7.00 R 15

**Note:** All suggested envelope selections are to be used as a guide only. Variations in tyre sizes, tyre dimensions, precured tread designs and precured tread thickness may require a smaller or larger envelope size. In some instances it may be necessary to measure the built tyre to determine the correct envelope size.

**GREEN** envelope can be ordered for higher life. All our envelopes marked with \* are also available in **GREEN**.

## DOUBLE ENVELOPE SYSTEM



### Inner Envelope

Sl. No.	Product Code	Tyre Size (Suggested)
1	1100 x 480	385/65 R 22.5, 385/55 R 22.5, 315/80 R 22.5, 315/75 R 22.5, 13 R 22.5, 12 R 22.5, 11.00 R 22, 12.00 R 20, 11.00 R 20, 425/55 R 19.5
2	1060 x 480	315/70 R 22.5, 305/70 R 22.5, 295/80 R 22.5, 295/75 R 22.5, 11 R 22.5, 10 R 22.5, 275/80 R 22.5, 275/70 R 22.5, 10.00 R 22, 295/90 R 20, 10.00 R 20, 275/80 R 20, 9.00 R 20
3	780 x 400	9 R 17.5, 8.5 R 17.5, 8 R 17.5, 235/75 R 17.5, 225/75 R 17.5, 215/75 R 17.5, 205/75 R 17.5, 265/70 R 17.5, 245/70 R 17.5, 205/65 R 17.5, 8.25 R 16, 7.50 R 16, 7.00 R 16, 235/85 R 16, 215/85 R 16, 225/75 R 16, 215/75 R 16, 245/70 R 16, 255/75 R 15, 7.50 R 15

## WICKING PAD

Double Envelope System

1250 x 175  
All truck tyres



ARC / Snap Seal / Flex Seal System & Rim and Tube System

520 x 175  
All truck tyres



## CURING BAGS



Sl. No.	Sizes
1	16.9 x 28
2	14.9 x 28
3	13.6 x 28
4	12.4 x 28
5	14.00 x 24/25
6	12.00 x 24
7	12 R 22.5
8	11 R 22.5
9	315/80 R 22.5
10	295/80 R 22.5
11	12.00 x 20
12	11.00 x 20
13	10.00 x 20
14	9.00 x 20
15	8.25 x 20
16	8.25 x 16
17	7.50 x 16
18	7.00 x 15
19	6.00 x 16
20	6.00 x 14
21	5.90 x 15
22	5.65/4.50 x 12
23	4.50 x 10
24	4.00 x 8

## SPECIAL HEAT RESISTANT FLAPS



These flaps are made with the same material as envelopes. Our flaps protect the curing tubes and increase their life.

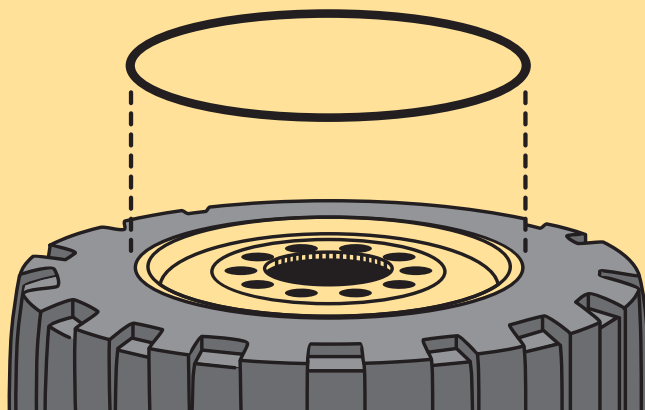
Flap Size (Inches)	Tyre Size (Suggested)
22.5 <b>Extra Wide</b>	385/65 R 22.5 315/80 R 22.5 12 R 22.5
22.5	295/80 R 22.5 11 R 22.5
20 <b>Extra Wide</b>	12.00 R 20 11.00 R 20 10.00 R 20 12.00 x 20 11.00 x 20
20 <b>SUPER</b>	10.00 x 20 9.00 x 20 9.00 R 20 8.25 x 20 8.25 R 20
16 <b>LCV</b>	8.25 R 16 7.50 R 16 7.00 R 16 7.50 R 15 7.00 R 15

### To double the life of curing bag

Use **10.00 x 20 Electric Curing Bag** with **20 Extra Wide Flap** for Radial tyres and **20 Super** for Nylon tyres.

## OTR TYRES 'O' SEALING RINGS

Sealing the tubeless tyre beads of OTR vehicle with split rims



### DATA OF MIDAS TUBELESS 'O' RING SIZES

Sl. No.	Product Code	Thickness (mm)	Rim Size (Inches)	Tyre Size (Suggested)
1	OR 20 THIN	6.5	20	365/80-20, 385/80-20 16.00-20, 14.00-20, 20-20
2	OR 24 THIN	6.5	24	16.00-24, 14.00-24
3	OR 25 THIN	6.5	25	15.5-25, 17.5-25
4	OR 25 THICK	9.5	25	14.00-25, 16.00-25, 18.00-25 20.5-25, 23.5-25 26.5-25, 29.5-25
5	OR 29 THICK	9.5	29	26.5-29, 29.5-29 33.25-29
6	OR 33 THICK	9.5	33	18.00-33, 35/65-33 33.25-33
7	OR 35 THICK	9.5	35	21.00-35, 24.00-35 33.25-35
8	OR 45 THICK	9.5	45	45/65-45
9	OR 49 THICK	9.5	49	27.00-49



**MIDAS TREADS INDIA PVT. LTD.**

Midas Marketing Building  
Varissery Junction, Mariathuruthu P.O.  
Kottayam - 686 017, Kerala, India.

Phone: 91 481 2561215

 6238733169

E-mail: sales@midastreads.com (Domestic Division)  
ramnath.r@midastreads.com (Export Division)

Website: www.midas.co.in

**CUSTOMER CARE**

E-mail: customercare@midastreads.com

Sivaramakrishnan +91 9495686786

Ranjith Mayakkavil +91 8075835932

Jineesh Maniyath +91 9961536003