

# TVS TREAD

## PRODUCT CATALOGUE



High Performance



High Safety



High Savings



NH PLUS	NHP	04
GP PLUS	GPP	
PLATINUM	PL	
PORT SUPER	PS	
TVS75	TVS75	
LONG HAUL PLUS	LHP	

LOAD LUGGER	LL	05
LUG PLUS	LP	
PLATINUM TRACTION	PLT	
ZEBRA	ZB	
TAT SUPER LUG	TS	

CROSS COUNTRY	CC	06
ROAD STAR	RS	
MINES LUG	ML	
MINES CHALLENGER	MC	
MINES RIDER	MR	
MINES LUG PLUS	MLP	

MINES TRACK	MT	07
EXCAVATOR	EXT	
NEW NATIONAL HIGHWAY	NNH	
DUMA	DM	
HIGHWAY	HW	
SUPER LINER	SLR	

MASANGA	MS	08
TVS VIKING	VK	
ROYAL RIB BIAS	RRB	
MAGIC LUG	MGL	
LUG STAR	LSR	

TVS-SL	TSL	09
SUPER TRACK	ST	
TREAD MILLER	TM	
CHEETAH	CH	
TRACK STAR	TSR	
TRAXTER	TX	

T-ZONE	TZ	10
LOAD STAR	LS	
ROYAL HIGHWAY	RH	
PLATINUM TRACTION PLUS	PLTP	
STEER KING	SK	

DRIVE KING	DK	11
POWER RIB	PR	
LONG RIDER	LR	
SPREAD MAX	SM	
MUZLE	MZL	
HIGHWAY DEEP TREAD	HDT	

NEO RADIAL	NR	12
HEAVY TRACTION	HT	
GRIP MASTER	GM	
EXCEL GRIP	EG	
AXLER- R	AR	
ROAD KING	RK	

TVS - LD	LD	13
ULTRA MILER	UM	
LONG GRIPPER	LG	
CONQUERER	CR	
FREE RUNNER	FR	

NATIONAL HIGHWAY	NH	14
PREMIUM TREAD	PT	
GRAND PRIX	GP	
CROSS TRACK	CT	
BLACK CAT	BC	
TRACK LUG	TL	

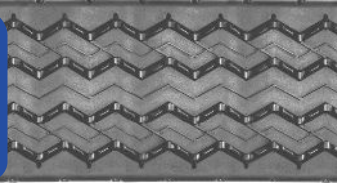
TRACTOR FRONT	TF	15
DEEP TREAD	DT	
TREAD MILLER	TM	
MINI EXPRESS	ME	
MT RADIAL	MTR	
OPTIMA	OPT	

SLEEK	SL	16
ESTATE	EST	
ROVER	RV	
ROAD STAR	RS	
ROAD RANGER	RR	
EMPRESS	EM	
JAZZ	JZ	

SLEEK 2	SL2	17
HAWK	HK	
SIERRA	SR	
TRI TREAD	TT	
ACE TREAD	AT	

## NH PLUS

Item Code: NHP



Base width mm	Tread depth mm	Base thickness mm	Length inch	App.Wt. kgs
190	13.5	3.3	124	9.6
190	14.5	3.4	124	10.2
205	14.5	3.5	128	11.6
205	13.5	3.3	128	10.4
210	14.4	3.7	128	12.1
210	13.5	3.3	128	11.0
215	14.0	3.3	128	11.7
220	13.5	4.0	128	11.9
220	13.5	4.0	130	12.1

## GP PLUS

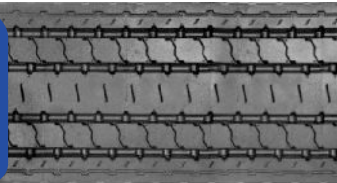
Item Code: GPP



Base width mm	Tread depth mm	Base thickness mm	Length inch	App.Wt. kgs
190	13.5	3.3	124	9.9
205	13.5	3.3	127	10.8
210	13.5	3.3	127	11.1
215	14.0	3.5	127	11.8

## PLATINUM

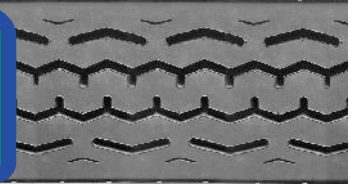
Item Code: PL



Base width mm	Tread depth mm	Base thickness mm	Length inch	App.Wt. kgs
202	14.0	3	127	11.0
208	14.0	3	127	11.2
215	14.0	3	128	11.5

## PORT SUPER

Item Code: PS



Base width mm	Tread depth mm	Base thickness mm	Length inch	App.Wt. kgs
190	16.0	3.5	124	11.4
205	15.0	3.9	128	12.8
210	16.0	3.9	129	13.1
215	16.0	3.9	129	13.4
225	16.0	3.9	129	14.1
235	15.0	3.9	132	14.2

## TVS75

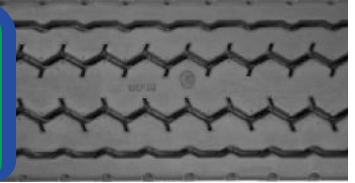
Item Code: TVS75



Base width mm	Tread depth mm	Base thickness mm	Length inch	App.Wt. kgs
205	14.0	3.5	128	11.4
210	13.3	3.5	128	11.3

## LONG HAUL PLUS

Item Code: LHP



Base width mm	Tread depth mm	Base thickness mm	Length inch	App.Wt. kgs
188	18.5	4.0	124	13.2

## LOAD LUGGER

Item Code: LL

Base width mm	Tread depth mm	Base thickness mm	Length inch	App.Wt. kgs
160	11.5	3.3	99	6.1
170	12.5	3.3	104	6.9
175	12.5	3.3	104	7.1
175	12.5	3.3	118	8.1
204	13.5	3.4	126	10.7
204	13.5	3.4	128	10.9
205	14.4	3.4	126	11.1
205	14.4	3.4	128	11.3
210	13.5	3.0	126	10.5
210	13.5	3.0	128	10.7
210	14.4	3.4	126	11.5
210	14.4	3.4	128	11.7
210	16.0	4.0	128	13.0
215	14.0	3.2	128	11.3
215	14.4	3.4	126	11.8
215	14.4	3.4	128	12.0
220	14.0	3.2	128	11.5
220	14.0	3.2	131	11.7
220	14.4	3.4	126	12.0
220	14.4	3.4	128	12.2

## LUG PLUS

Item Code: LP

Base width mm	Tread depth mm	Base thickness mm	Length inch	App.Wt. kgs
210	14.5	3.5	128	11.9

## PLATINUM TRACTION

Item Code: PLT

Base width mm	Tread depth mm	Base thickness mm	Length inch	App.Wt. kgs
204	13.8	3.3	126	10.5
204	13.8	3.3	129	10.8
210	13.8	3.5	126	11.0
210	13.8	3.5	129	11.2
215	13.8	3.5	128	11.4
220	13.8	3.5	127	11.7
220	13.8	3.5	130	12.0

## ZEBRA

Item Code: ZB

Base width mm	Tread depth mm	Base thickness mm	Length inch	App.Wt. kgs
150	11.5	3.0	97	5.0
165	14	3.0	98	6.2
175	14.0	3.5	104	7.4
175	14	3.5	118	8.3
185	14	3.5	118	8.9
195	14.8	3.3	125	10.4
210	15.3	3.5	127	11.6
220	16.0	4.0	130	13.1

## TAT SUPER LUG

Item Code: TS

Base width mm	Tread depth mm	Base thickness mm	Length inch	App.Wt. kgs
210	15.0	3.8	130	11.5
240	14.5	3.0	90	8.6
240	14.5	3.0	129.5	12.5
240	15.0	3.5	148	14.8
240	16.5	3.5	130	14.2
240	19.0	4.8	148	18.6

## CROSS COUNTRY

Item Code: CC

Base width mm	Tread depth mm	Base thickness mm	Length inch	App. Wt. kgs
190	14.3	3.4	108	8.3
190	14.3	3.4	124	9.7

## ROADSTAR

Item Code: RS

Base width mm	Tread depth mm	Base thickness mm	Length inch	App. Wt. kgs
205	17.0	5.0	128	12.4
205	15.0	4.0	128	11.3

## MINES LUG

Item Code: ML

Base width mm	Tread depth mm	Base thickness mm	Length inch	App. Wt. kgs
220	15.0	3.5	124.5	11.8
220	15.0	3.5	130	12.4
230	15.0	3.5	130	13.4
240	15.0	3.5	128	13.5
240	15.0	3.5	130	13.8
240	15.0	3.5	147	15.5

## MINES CHALLENGER

Item Code: MC

Base width mm	Tread depth mm	Base thickness mm	Length inch	App. Wt. kgs
210	17.5	3.6	126	13.4
230	15.0	3.2	132	13.6
240	15.0	3.2	132	14.2

## MINES RIDER

Item Code: MR

Base width mm	Tread depth mm	Base thickness mm	Length inch	App. Wt. kgs
215	14.5	3.5	130	11.7

## MINES LUG PLUS

Item Code: MLP

Base width mm	Tread depth mm	Base thickness mm	Length inch	App. Wt. kgs
177	13.4	3.2	104	6.9
177	13.4	3.2	118.5	7.9
195	14.5	3.8	124	9.9
205	14.0	4.0	128	10.7
210	15.0	5.0	128	11.8
220	16.2	3.5	130	12.6
235	16.6	3.4	130	13.7

The tread dimensions mentioned pertain to the product when laid flat.

## MINES TRACK

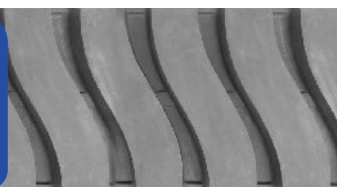
Item Code: MT



Base width mm	Tread depth mm	Base thickness mm	Length inch	App.Wt. kgs
177	13.5	3.3	118	7.9
195	16.0	3.2	124	10.5
205	15.0	3.5	130	11.1
205	17.0	4.5	128	12.7
210	17.5	4.5	128	13.5

## EXCAVATOR

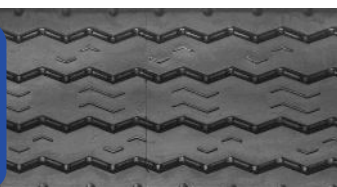
Item Code: EXT



Base width mm	Tread depth mm	Base thickness mm	Length inch	App.Wt. kgs
325	27.0	5.5	165	39.0
436	54.0	10.0	194	120.8

## NEW NATIONAL HIGHWAY

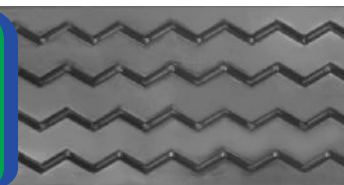
Item Code: NNH



Base width mm	Tread depth mm	Base thickness mm	Length inch	App.Wt. kgs
190	13.3	3.8	124	10.0
205	13.3	3.4	128	10.9
210	13.3	3.5	128	11.3
215	13.3	3.5	128	11.6
220	13.3	3.4	128	11.1
220	13.3	3.4	130	11.3

## DUMA

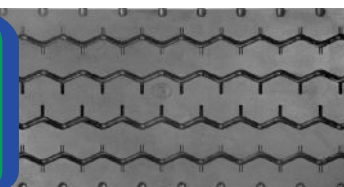
Item Code: DM



Base width mm	Tread depth mm	Base thickness mm	Length inch	App.Wt. kgs
205	13.0	3.5	129	10.9
210	13.0	3.4	128	11.5
215	13.0	3.4	128	11.9

## HIGHWAY

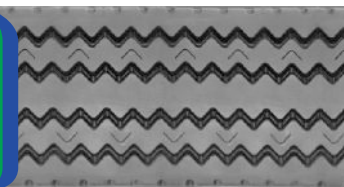
Item Code: HW



Base width mm	Tread depth mm	Base thickness mm	Length inch	App.Wt. kgs
203	13.5	3.2	127	10.8
210	13.5	4.0	127	11.9
214	13.5	3.2	127	11.3
220	13.5	3.2	127	11.7
220	13.5	3.2	130	12.0

## SUPER LINER

Item Code: SLR

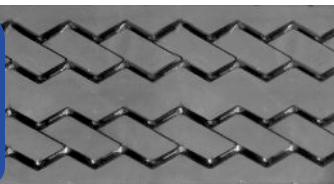


Base width mm	Tread depth mm	Base thickness mm	Length inch	App.Wt. kgs
205	13.2	3.5	128	10.5
210	13.2	3.5	128	10.6
215	13.0	3.8	128	10.8
220	13.0	4.0	128	11.4
220	13.0	4.0	130	11.6

The tread dimensions mentioned pertain to the product when laid flat.

## MASANGA

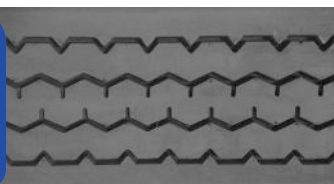
Item Code: MS



Base width mm	Tread depth mm	Base thickness mm	Length inch	App.Wt. kgs
205	13.0	3.5	128	10.7
210	13.0	3.5	128	11.0
230	13.0	3.5	128	12.6

## TVS VIKING

Item Code: VK



Base width mm	Tread depth mm	Base thickness mm	Length inch	App.Wt. kgs
120	11.0	3.5	87	3.9
127	11.0	3.5	87	4.1
143	11.0	3.3	94	4.8
153	11.0	3.3	98	5.4
160	10.5	3.0	98	5.6
160	12.5	3.0	98	6.4
170	12.7	3.2	103	7.2
175	12.7	3.2	118	8.5
180	12.6	4.0	118	8.9
195	11.5	3.5	124	9.3
195	13.0	3.5	124	10.4
197	15.5	3.8	125	12.2
205	14.3	4.0	128	12.1
205	13.2	3.0	127	10.4
210	14.0	3.8	128	12.1

## ROYAL RIB BIAS

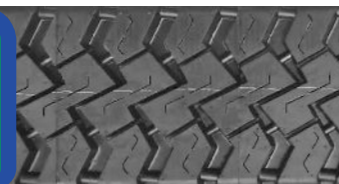
Item Code: RRB



Base width mm	Tread depth mm	Base thickness mm	Length inch	App.Wt. kgs
160	11.0	3.0	97	5.3
170	12.0	3.0	104	6.5
175	12.0	3.0	118	7.6
205	13.5	3.5	128	10.7

## MAGIC LUG

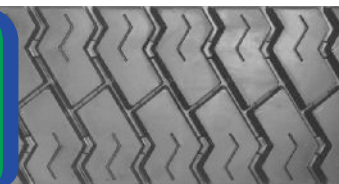
Item Code: MGL



Base width mm	Tread depth mm	Base thickness mm	Length inch	App.Wt. kgs
204	14.5	3.5	128	9.9
210	14.5	3.5	128	10.2
215	14.5	3.5	128	10.7
220	14.5	3.5	128	10.9
220	14.5	3.5	130	11.1

## LUG STAR

Item Code: LSR



Base width mm	Tread depth mm	Base thickness mm	Length inch	App.Wt. kgs
155	11.8	3.3	98	5.7
160	11.8	3.3	98	5.9
165	12.5	3.3	97	6.1
165	12.5	3.3	103	6.5
175	12.5	3.8	103	7.2
175	12.5	3.8	118	8.3
205	13.3	3.2	126.5	10.1
210	12.5	3.5	127	10.4
210	13.5	3.5	127	11.1
215	13.5	3.3	127	10.9
220	13.5	3.3	127	11.0

## TVS-SL

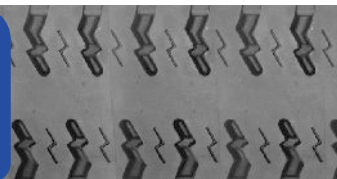
Item Code: TSL



Base width mm	Tread depth mm	Base thickness mm	Length inch	App.Wt. kgs
205	13.0	3.5	127	10.4

## SUPER TRACK

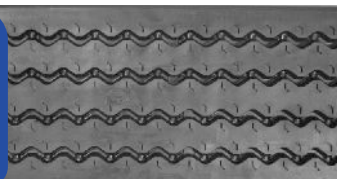
Item Code: ST



Base width mm	Tread depth mm	Base thickness mm	Length inch	App.Wt. kgs
210	14.0	3.0	127	10.8
215	14.0	3.0	127	11.4

## TREAD MILER

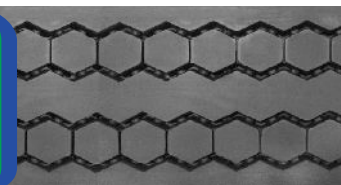
Item Code: TM



Base width mm	Tread depth mm	Base thickness mm	Length inch	App.Wt. kgs
190	12.5	3.5	123.5	9.0
205	12.8	3.2	128	10.7
205	12.2	3.2	128	10.1
210	12.8	3.2	128	10.9
210	12.2	3.2	128	10.2
215	12.7	3.3	128	10.7
220	12.7	3.3	128	10.8
220	12.7	3.3	130	11.0

## CHEETAH

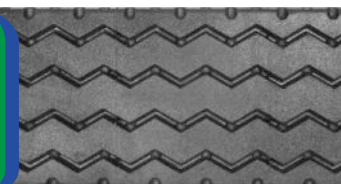
Item Code: CH



Base width mm	Tread depth mm	Base thickness mm	Length inch	App.Wt. kgs
155	12.0	3.8	97	6.1
160	12.0	3.8	97	6.4
165	12.0	3.4	103	6.8
165	12.0	3.4	119	7.9
175	12.0	3.5	103	7.4
175	12.0	3.5	119	8.5
190	12.5	3.5	124	9.7
205	12.5	3.5	127	10.6
210	12.5	3.5	127	10.9
215	12.5	3.5	127	11.1

## TRACK STAR

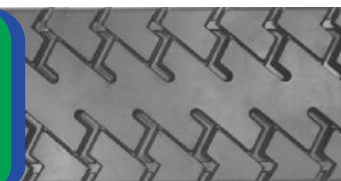
Item Code: TSR



Base width mm	Tread depth mm	Base thickness mm	Length inch	App.Wt. kgs
190	12.3	2.8	124	8.4
202	12.5	3.0	128	9.7
208	12.5	3.0	128	9.8
215	12.5	3.0	128	10.3
230	12.5	3.2	130	11.8

## TRAXTER

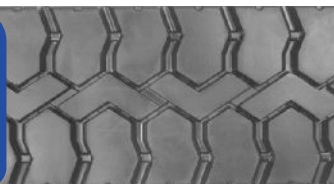
Item Code: TX



Base width mm	Tread depth mm	Base thickness mm	Length inch	App.Wt. kgs
205	12.5	3.3	127	9.9
210	12.5	3.3	128	10.5

## T-ZONE

Item Code: TZ



Base width mm	Tread depth mm	Base thickness mm	Length inch	App.Wt. kgs
160	12.5	3.3	99	5.8
171	12.5	3.3	105	6.9
171	12.5	3.3	119	7.8
205	12.5	3.3	127	9.8

## LOAD STAR

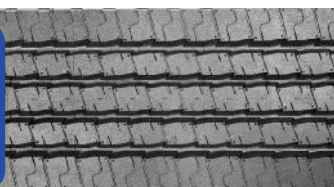
Item Code: LS



Base width mm	Tread depth mm	Base thickness mm	Length inch	App.Wt. kgs
204	12.5	3.3	127	9.5
210	12.5	3.3	127	9.6
215	12.5	3.0	127	9.6
220	12.5	3.5	127	10.0
220	12.5	3.5	130	10.2

## ROYAL HIGHWAY

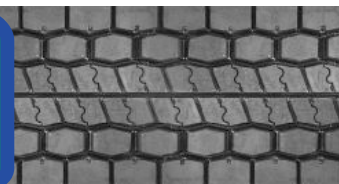
Item Code: RH



Base width mm	Tread depth mm	Base thickness mm	Length inch	App.Wt. kgs
220	14.0	3.3	128	11.5
220	14.0	3.3	130	11.7
230	14.0	3.3	128	11.6
230	14.0	3.3	130	11.8
240	13.5	3.3	128	11.9
240	13.5	3.3	130	12.2
250	14.5	3.3	128	13.3
250	14.5	3.3	130	13.6
260	14.5	3.5	130	14.5

## PLATINUM TRACTION PLUS

Item Code: PLTP



Base width mm	Tread depth mm	Base thickness mm	Length inch	App.Wt. kgs
230	14.0	3.8	130	12.3

## STEER KING

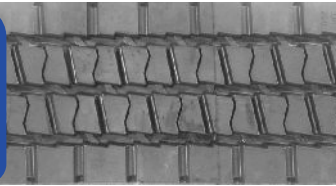
Item Code: SK



Base width mm	Tread depth mm	Base thickness mm	Length inch	App.Wt. kgs
215	14.0	3.3	128	11.2
215	14.0	3.3	130	11.4
220	14.0	3.3	128	11.5
220	14.0	3.3	130	11.7
230	14.0	3.3	128	12.8
230	14.0	3.3	130	13.0

## DRIVE KING

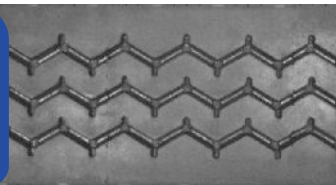
Item Code: DK



Base width mm	Tread depth mm	Base thickness mm	Length inch	App.Wt. kgs
190	14.0	3.5	124	9.6
215	13.5	3.3	127	10.8
215	13.5	3.3	130	11.0
220	13.5	3.3	127	10.9
220	13.5	3.3	130	11.1
230	14.0	3.3	128	11.4
230	14.0	3.3	130	11.6
240	14.0	3.3	130	12.2
240	14.0	3.3	128	11.7
250	14.0	3.5	130	12.6

## POWER RIB

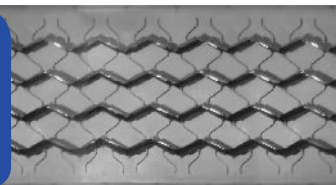
Item Code: PR



Base width mm	Tread depth mm	Base thickness mm	Length inch	App.Wt. kgs
200	14.2	3.0	104	8.6
200	14.2	3.0	127	10.6
210	14.2	3.0	129	11.2
220	13.5	3.3	128	11.4
220	14.0	3.3	130	11.6
230	13.5	3.3	130	12.4

## LONG RIDER

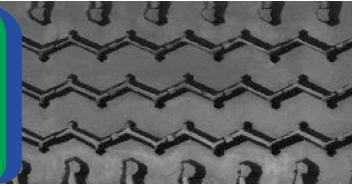
Item Code: LR



Base width mm	Tread depth mm	Base thickness mm	Length inch	App.Wt. kgs
210	14.0	3.0	128	11.2
210	14.0	3.0	130	11.4

## SPREAD MAX

Item Code: SM



Base width mm	Tread depth mm	Base thickness mm	Length inch	App.Wt. kgs
130	12.5	4.0	96	5.3
140	12.5	4.0	96	5.5
150	13.3	3.5	98	5.9
160	13.3	4.0	98	6.2
185	13.5	4.0	128	9.6
195	14.5	3.2	119	10.7
205	13.8	3.2	128	10.2
205	14.5	3.0	126	11.0
205	14.5	3.0	128	11.2
210	14.0	3.3	128	10.7
215	14.5	3.3	126	11.2
215	14.5	3.3	128	11.3
220	14.5	3.0	126	11.4
220	14.5	3.0	128	11.6
230	14.5	3.0	128	12.2
230	14.5	3.0	128	12.5
240	14.5	3.2	130	13.4
250	14.5	3.4	130	14.0

## MUZLE

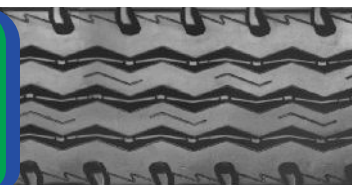
Item Code: MZL



Base width mm	Tread depth mm	Base thickness mm	Length inch	App.Wt. kgs
220	15.0	3.2	129	12.0
230	15.5	3.2	129	12.7

## HIGHWAY DEEP TREAD

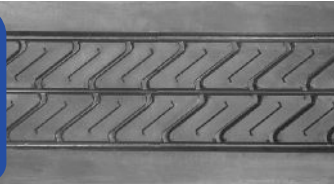
Item Code: HDT



Base width mm	Tread depth mm	Base thickness mm	Length inch	App.Wt. kgs
203	15.5	3.5	130	11.6
214	15.5	3.5	130	12.5
220	15.5	3.5	130	13.0

## NEO RADIAL

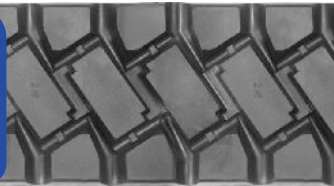
Item Code: NR



Base width mm	Tread depth mm	Base thickness mm	Length inch	App.Wt. kgs
220	13.0	3.2	128	11.2
230	13.0	3.2	128	11.5
230	13.0	3.2	130	11.7
240	13.0	3.2	128	12.2
240	13.0	3.2	130	12.4
250	13.0	3.5	130	13.6

## HEAVY TRACTION

Item Code: HT



Base width mm	Tread depth mm	Base thickness mm	Length inch	App.Wt. kgs
203	23.5	4.0	130	15.2
216	23.5	4.0	130	16.2
220	23.5	4.0	130	16.4

## GRIP MASTER

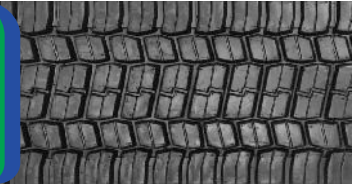
Item Code: GM



Base width mm	Tread depth mm	Base thickness mm	Length inch	App.Wt. kgs
210	14.0	4.0	128	10.2
220	14.0	3.3	129	11.1
230	14.0	3.3	128	11.9
240	14.0	3.3	130	12.0
250	14.0	3.3	130	12.9

## EXCEL GRIP

Item Code: EG



Base width mm	Tread depth mm	Base thickness mm	Length inch	App.Wt. kgs
230	13.0	3.5	128	11.0
240	13.0	3.5	130	12.0
250	13.0	3.5	130	12.5

## AXLER-R

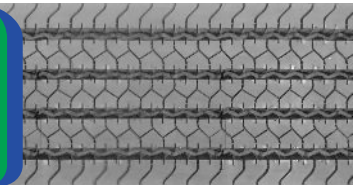
Item Code: AR



Base width mm	Tread depth mm	Base thickness mm	Length inch	App.Wt. kgs
205	14	3.2	128	10.6
210	14	3.2	128	10.8

## ROAD KING

Item Code: RK

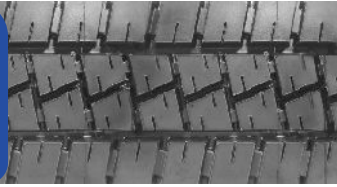


Base width mm	Tread depth mm	Base thickness mm	Length inch	App.Wt. kgs
150	12.5	3.3	93	5.2
165	13.5	3.3	98	6.6
175	13.0	3.3	103	7.1
175	13.0	3.3	119	8.2
185	13.5	3.3	118	8.9
200	14.0	3.5	104	9.0
205	12.5	3.3	129	10.2
205	14.3	3.5	124	11.3
210	14.3	3.5	128	11.6
210	13.5	3.0	128	10.5
215	14.5	3.3	129	11.7
220	13.8	3.5	128	11.9
220	14.5	3.5	128	12.5
230	14.0	3.5	130	12.7

The tread dimensions mentioned pertain to the product when laid flat.

## TVS LD

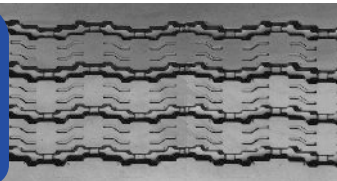
Item Code: LD



Base width mm	Tread depth mm	Base thickness mm	Length inch	App. Wt. kgs
210	13.3	3.3	128	10.7
215	13.5	3.5	128	11.5
220	13.5	3.5	128	11.7
220	13.5	3.5	130	11.9
220	13.5	3.2	129	11.5
220	12.7	3.2	129	10.4
220	12.7	3.2	132	10.6
230	13.5	3.5	128	12.2
230	13.5	3.5	130	12.4
230	12.7	3.2	128	10.8
230	12.7	3.2	130	11.0
240	13.0	3.3	130	12.0
250	13.0	3.5	130	12.6

## ULTRA MILER

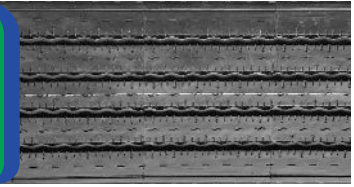
Item Code: UM



Base width mm	Tread depth mm	Base thickness mm	Length inch	App. Wt. kgs
205	13.0	3.0	128	10.2
210	13.0	3.0	128	10.5
215	11.5	3.3	128	10.2
215	11.5	3.3	130	10.4
220	11.5	3.3	128	10.4
220	11.5	3.3	130	10.6
230	11.5	3.0	128	10.5
230	11.5	3.0	130	10.7
240	12.0	3.4	128	11.6
240	12.0	3.4	130	11.8
250	12.0	3.5	130	12.0

## LONG GRIPPER

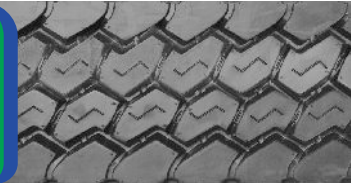
Item Code: LG



Base width mm	Tread depth mm	Base thickness mm	Length inch	App. Wt. kgs
215	12.3	3.2	128	9.8
215	12.3	3.2	130	10.0
220	12.3	3.2	128	10.2
220	12.3	3.2	130	10.4
230	12.5	3.5	128	11.4
230	12.5	3.5	130	11.6
240	13.0	3.3	128	11.5
240	13.0	3.3	130	11.7
250	13.0	3.5	130	13.5

## CONQUERER

Item Code: CR



Base width mm	Tread depth mm	Base thickness mm	Length inch	App. Wt. kgs
165	13.0	3.0	99	6.1
175	13.0	4.0	103	7.3
175	13.0	4.0	118	8.4

## FREE RUNNER

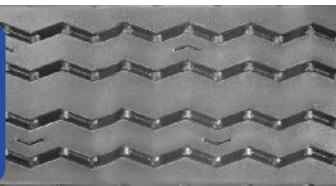
Item Code: FR



Base width mm	Tread depth mm	Base thickness mm	Length inch	App. Wt. kgs
150	11.5	3.3	94	5.4
160	12.5	3.3	97	6.0
165	13.0	3.3	97	6.0
165	13.0	3.3	103	6.4
175	14.0	3.9	103	8.2
175	14.0	3.9	119	9.4
182	13.5	3.5	118	9.0
197	15.0	3.5	124	11.2

## NATIONAL HIGHWAY

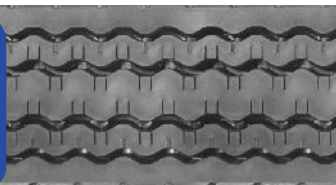
Item Code: NH



Base width mm	Tread depth mm	Base thickness mm	Length inch	App.Wt. kgs
155	12.5	3.3	97	5.9
165	12.5	3.5	97	6.5
165	12.5	3.5	103	6.9
165	12.5	3.5	115	7.7
165	12.5	3.5	119	8.0
175	13.8	3.5	103	7.6
175	13.8	3.5	119	8.7

## PREMIUM TREAD

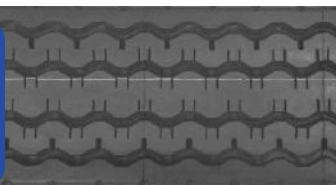
Item Code: PT



Base width mm	Tread depth mm	Base thickness mm	Length inch	App.Wt. kgs
143	11.5	4.0	93	5.3
143	11.5	3.3	97	5.5
155	11.5	3.7	83	4.9
155	11.5	3.7	94	5.6
155	11.5	3.7	98	5.8
155	11.5	3.7	115	6.8

## GRAND PRIX

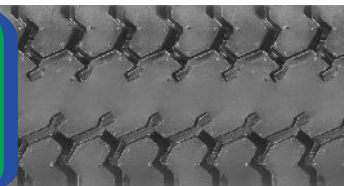
Item Code: GP



Base width mm	Tread depth mm	Base thickness mm	Length inch	App.Wt. kgs
160	11.5	3.3	99	6.0
170	12.5	3.3	104	6.7
175	11.0	4.0	118	8.2

## CROSS TRACK

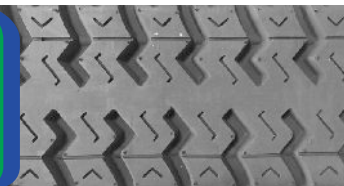
Item Code: CT



Base width mm	Tread depth mm	Base thickness mm	Length inch	App.Wt. kgs
155	12.6	3.3	98	6.0
160	12.5	3.5	97	6.2
165	12.5	3.3	99	6.5
165	12.6	3.3	119	7.8
175	14.0	3.5	104	7.8
175	14.0	3.5	119	8.9

## BLACK CAT

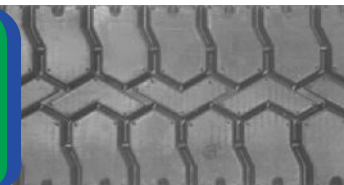
Item Code: BC



Base width mm	Tread depth mm	Base thickness mm	Length inch	App.Wt. kgs
155	12.0	4.0	98	5.7
160	12.8	4.0	98	6.3
165	12.8	4.0	103	6.8
175	12.8	4.0	103	7.2
175	12.8	4.0	119	8.4

## TRACK LUG

Item Code: TL



Base width mm	Tread depth mm	Base thickness mm	Length inch	App.Wt. kgs
168	14.5	4.0	104	8.6

## TRACTOR FRONT

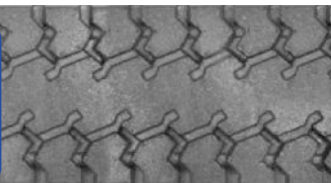
Item Code: TF



Base width mm	Tread depth mm	Base thickness mm	Length inch	App.Wt. kgs
132	14.5	3.5	90	4.5
160	14.0	3.9	99	6.1

## DEEP TREAD

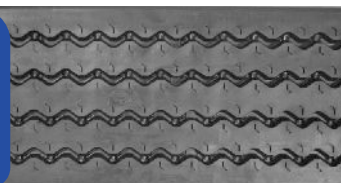
Item Code: DT



Base width mm	Tread depth mm	Base thickness mm	Length inch	App.Wt. kgs
160	12.5	4.0	98	6.0

## TREAD MILER

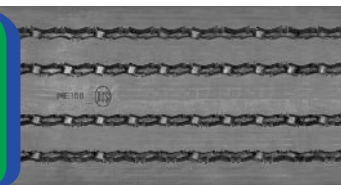
Item Code: TM



Base width mm	Tread depth mm	Base thickness mm	Length inch	App.Wt. kgs
155	11.5	3.1	97	5.5
160	11.5	3.5	97	5.8
160	11.5	3.5	99	5.9
160	11.5	3.5	113	6.8
165	12.5	3.2	103	6.5
170	12.5	3.2	103	7.0
170	12.5	3.2	119	8.1
175	12.5	3.2	103	7.1
175	12.5	3.2	118	8.2

## MINI EXPRESS

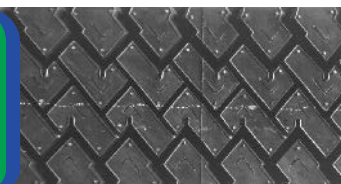
Item Code: ME



Base width mm	Tread depth mm	Base thickness mm	Length inch	App.Wt. kgs
155	11.5	3.4	98	5.8

## MT RADIAL

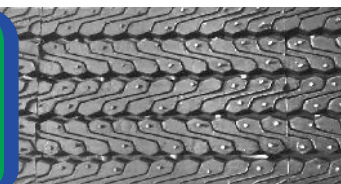
Item Code: MTR



Base width mm	Tread depth mm	Base thickness mm	Length inch	App.Wt. kgs
160	13.0	3.0	99	5.7
170	13.0	3.0	103	6.2
170	13.0	3.0	119	6.7
180	13.0	3.3	119	8.2

## OPTIMA

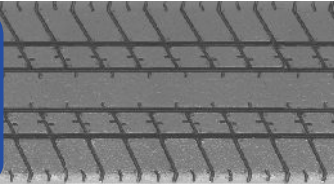
Item Code: OPT



Base width mm	Tread depth mm	Base thickness mm	Length inch	App.Wt. kgs
95	8	2.7	61	1.5
120	8	2.7	90	2.9

## SLEEK

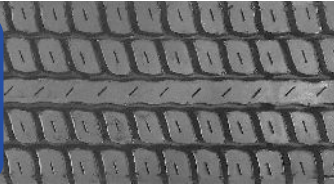
Item Code: SL



Base width mm	Tread depth mm	Base thickness mm	Length inch	App.Wt. kgs
127	8.0	3.2	71	2.4
127	8.0	3.2	83	2.8
155	10.5	3.4	87	4.9
155	10.5	3.4	91	5.1

## ESTATE

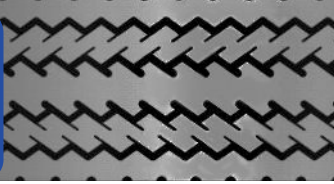
Item Code: EST



Base width mm	Tread depth mm	Base thickness mm	Length inch	App.Wt. kgs
156	9.5	3.8	90	4.7
120	9.9	2.6	66	2.3

## ROVER

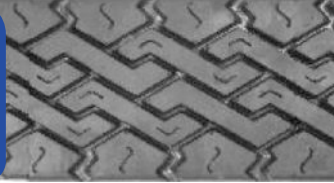
Item Code: RV



Base width mm	Tread depth mm	Base thickness mm	Length inch	App.Wt. kgs
145	11.5	3.3	93	4.6

## ROAD STAR

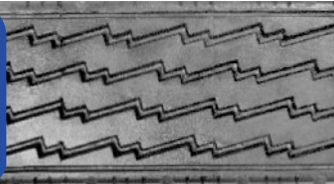
Item Code: RS



Base width mm	Tread depth mm	Base thickness mm	Length inch	App.Wt. kgs
130	12.5	4.0	89	4.4

## ROAD RANGER

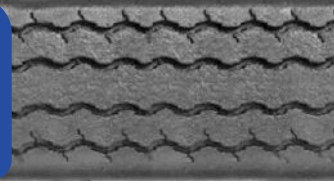
Item Code: RR



Base width mm	Tread depth mm	Base thickness mm	Length inch	App.Wt. kgs
130	12.5	4.0	89	4.5

## EMPRESS

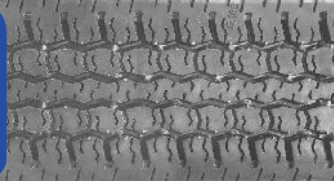
Item Code: EM



Base width mm	Tread depth mm	Base thickness mm	Length inch	App.Wt. kgs
114	11.5	3.2	81	3.3
119	11.5	3.0	65	2.4
119	11.5	3.0	81	3.0

## JAZZ

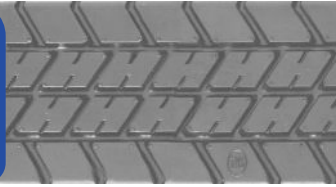
Item Code: JZ



Base width mm	Tread depth mm	Base thickness mm	Length inch	App.Wt. kgs
168	8.0	3.0	82	3.5
168	8.0	3.0	88	3.8

## SLEEK 2

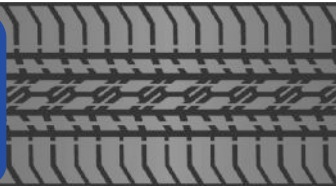
Item Code: SL2



Base width mm	Tread depth mm	Base thickness mm	Length inch	App.Wt. kgs
140	9.0	3.5	84	3.4
140	9.0	3.5	90	3.6

## HAWK

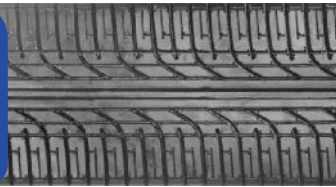
Item Code: HK



Base width mm	Tread depth mm	Base thickness mm	Length inch	App.Wt. kgs
125	9.0	3.5	66	2.5

## SIERRA

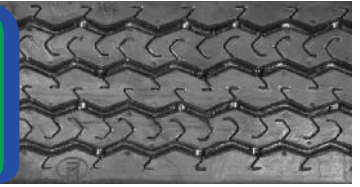
Item Code: SR



Base width mm	Tread depth mm	Base thickness mm	Length inch	App.Wt. kgs
165	10.5	3.1	86	4.5
165	10.5	3.1	89	4.6
175	10.5	3.1	86	4.8
175	10.5	3.1	89	5.0

## TRI TREAD

Item Code: TT



Base width mm	Tread depth mm	Base thickness mm	Length inch	App.Wt. kgs
100	8.5	3.1	62	1.7

## ACE TREAD

Item Code: AT

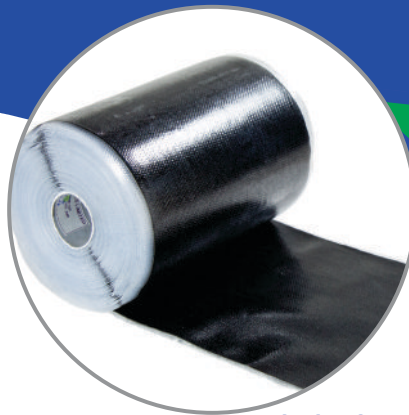


Base width mm	Tread depth mm	Base thickness mm	Length inch	App.Wt. kgs
124	8.5	3.1	66	2.4

# Products



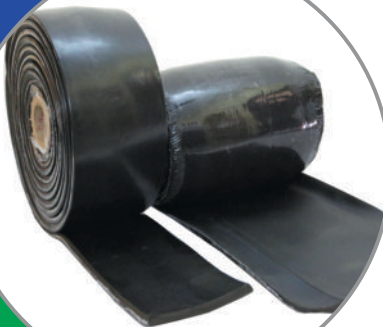
**PRECURED  
TREAD  
RUBBER**



**CUSHION  
GUM**



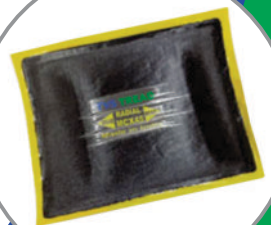
**BLACK  
VULCANIZING  
CEMENT (BVC)**



**CAMEL  
BACK**



**ROPE  
RUBBER**



**REPAIR PATCHES**



# TVS TREAD

## OUR NETWORK

### TAMILNADU

#### CHENNAI

Mob: 98412 65643 /  
99419 06520  
Email: chn@tvstread.in

#### COIMBATORE

Tel: 0422-4383525  
Mob: 99444 27712  
Email: cbe@tvstread.in

#### MADURAI

Tel: 0452-2382935  
Mob: 99524 17701  
Email: mdu@tvstread.in

#### PUDUKKOTTAI

Tel: 04322-265333  
Mob: 94421 34521  
Email: pdk@tvstread.in

#### SALEM

Tel: 0427-2267299  
Mob: 99944 15065  
Email: slm@tvstread.in

#### TIRUNELVELI

Tel: 0462-2502295  
Mob: 99949 15074  
Email: tin@tvstread.in

### KARNATAKA

#### BANGALORE

Tel: 08118-28395510  
Mob: 93419 63630  
Email: blr@tvstread.in

#### BELGAUM

Tel: 0831-2414525  
Mob: 96633 78510  
Email: bgm@tvstread.in

#### MANGALORE

Tel: 0824-2416772  
Mob: 93433 47656  
Email: mlr@tvstread.in

#### MYSORE

Tel: Mob: 98802 09477  
Email: mys@tvstread.in

### TELANGANA

#### HYDERABAD

Tel: 040-29802378  
Mob: 97040 66857  
Email: hyd@tvstread.in

### ANDRAPRADESH

#### RAJAHMUNDRY

Tel: 0883-2417448  
Mob: 93979 17374  
Email: rjy@tvstread.in

#### TADIPATRI

Mob: 93937 94767  
Email: tdp@tvstread.in

#### VIJAYAWADA

Tel: 0866-2543271  
Mob: 93929 42217  
Email: vja@tvstread.in

#### VISAKHAPATNAM

Tel: 0891-2558352/2559565  
Mob: 96666 69692  
Email: vsp@tvstread.in

### KERALA

#### COCHIN

Tel: 0484-2555514,  
2557913  
Mob: 97464 78422  
Email: cok@tvstread.in

#### TRIVANDRUM

Tel: 0471-2343355  
Mob: 99954 84958  
Email: tvn@tvstread.in

### MAHARASHTRA

#### NAGPUR

Tel: 07104-324789  
Email: ngp@tvstread.in

#### PUNE

Tel: 02113-282011  
Mob: 75881 63121  
Email: pune@tvstread.in

#### GOA

Tel: 0832-2285576  
Mob: 93721 52904  
Email: goa@tvstread.in

### JHARKAND

#### JAMSHEDPUR

Tel: 0657-2373900  
Mob: 92043 37668  
Email: jsd@tvstread.in

# TVS TREAD

SUNDARAM INDUSTRIES PRIVATE LIMITED

(Formerly known as T. S. RAJAM TYRES PRIVATE LIMITED)

A-1-F3A, New SIDCO, Maraimalai Nagar,  
Chengalpattu Dist., Chennai 603 209.

Tel : 044-27452867

Phone: +91-9444026092, 9790756521, 9383743745

Email: [info@tvstread.in](mailto:info@tvstread.in) / [nbaskaran@tvstread.in](mailto:nbaskaran@tvstread.in)

Dealer / Distributor:

