



iGENE LABSERVE

Innovative • Interactive • Intuitive

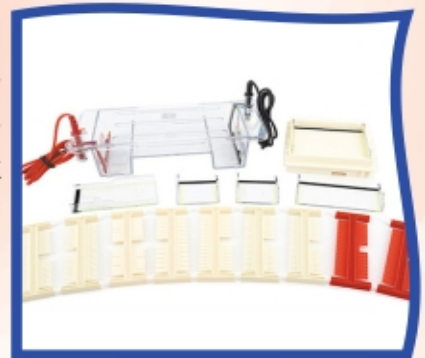
www.igenelabserve.in

ABOUT US

iGene Labserve Private Limited is counted amongst the leading laboratory equipment manufacturers and suppliers in the market of Delhi. Working in the industry for more than seven years, we have been successful in having more than 5000 installation PAN India in every state and UTs. PMO, DRDO, IITs, railway, ISRO, PSUs, etc., are some of our routine customers. We offer a wide assortment of laboratory equipment such as analytical weighing balance, mini centrifuge, PCR plate centrifuge, PCR thermal cycler, PCR workstation, plant growth chamber, stability chamber, vertical autoclave, vertical electrophoresis, vortex mixer, and many more. We are an ISO 9001-2015 quality certified company, whose all products are Make In India, which also qualify international standards accepted and appreciated by all renowned organizations like PMO, PSU, DRDO, AIIMS, IITs and many more.



Situated in Delhi (India), iGene Labserve Private Limited is operating in the industry since 2018. Under the headship of great mentors, we have evolved as a credible laboratory equipment trader in the industry in a quick time.



Major Markets

A large client base in Delhi and other states of India is highly excited to purchase our laboratory equipment on a huge scale. In addition to this, the superfine quality of our laboratory equipment is also appreciated by many clients in African continent, Gulf countries & South Asian Countries.

Our Infrastructural Facility

Spread across a large area of 2100 sq. meter, we have maintained the most advanced infrastructural facility for us at Delhi. This facility is equipped with hi-tech tools and modern-day machines. Usage of these machines and tools has enabled us to increase our production capacity to 200-300 per month.

OUR PRODUCTS

Laboratory Bod Incubator

Power Supply	:	220 Volts 50Hz
Temperature Range	:	Ambient-20 Degree C to 60 Degree c,
Temperature Accuracy	:	± 0.2 Degree c @37Degree c
Temperature Controller	:	Dual Display Pid Controller Display Sv & Pv Auto
Tuning Feature	:	
Temperature Sensor	:	Pt100
Inner Chamber	:	Ss 304
External Cabinet	:	Powder Coated Gi Sheet



Dry Bath Incubator

Model No.	:	IG- 120DS
Temperature Range	:	Room Temp.~ 120°C
Functions	:	Heating
Temperature Accuracy	:	$\pm 0.5^\circ\text{C}$
Temperature Uniformity	:	$\pm 0.5^\circ\text{C}$
Max Heating Rate	:	5.5°C/min
Timer	:	1min-99h59min
Screen	:	LED



Cooling Incubator Shaker

Shaker Speed	:	50–250 RPM
Orbit Dia	:	$\varnothing 25$ mm
Accuracy	:	$\pm 2\%$ of maximum speed
Temperature Range	:	5 °c Above Rt to 60 °c & with Cooling 5°c -60°c (customize Temperature Options Available)
Resolution	:	0.1°C at the pt-100
Temp. accuracy	:	± 0.3 °C
Power supply	:	230V $\pm 10\%$, 50Hz



Laboratory Deep Freezer

Temperature range	:	-10° C to -20°C
Temperature accuracy	:	$\pm 0.5^\circ\text{C}$
Temperature Uniformity	:	$\pm 0.1^\circ\text{C}$
Temperature controller	:	Dual display PID controller
Temperature sensor	:	PT100
Inner chamber	:	SS 304
External Cabinet	:	Powder Coated Gi Sheet
Insulation	:	Glass wool



Ultra Low Temperature Freezer

Temperature Range	:	-40° C to -80°C
Temperature Accuracy	:	$\pm 0.5^\circ\text{C}$
Temperature Uniformity	:	$\pm 0.1^\circ\text{C}$
Temperature Controller	:	Dual Display Pid Controller
Temperature sensor	:	PT100
Inner chamber	:	SS 304
External cabinet	:	Powder coated GI sheet
Insulation	:	PUF



OUR PRODUCTS

Biosafety Cabinet Class II B2

Sizes Available	:	2ft, 3ft, 4ft, 5ft and 6 ft
Construction	:	Double walled
Work Top	:	Ss 304 /316
Controller	:	Microprocessor PID controller Display of SV & PV
Air Filtration	:	Hepa Filter 99.95% Efficiency
Air recirculation	:	Does not recirculate but 100% air exhaust
Average Airflow Velocity	:	105 feet per min
Fumigation	:	In-built fumigation port (Optional)



Biosafety Cabinet Class II A2

Sizes Available	:	2ft, 3ft, 4ft, 5ft and 6 ft
Construction	:	SS 304 /316 / Powder coated MS or GI sheet
Work top	:	SS 304 /316
Controller	:	ON/Off switches for Cabinet, Light & Blower
Air filtration	:	HEPA filter 99.99% efficiency
Air recirculation	:	70% recirculation and 30% exhaust
Average Airflow Velocity	:	Inflow: Minimum 0.45 m/s (90 FPM) at 8
Fumigation	:	In-built fumigation port



Plant Growth Chamber

Temperature Range	:	Lights Off: 5°C to 60°C, Light On: 10°C to 60°C
Temperature Controller	:	Digital Pid Controller with Sv & Pv Values
Temperature Accuracy	:	± 1%
Humidity Range	:	50% to 90%
Humidity Controller	:	Digital Pid Controller with Sv & Pv Values
Humidity Accuracy	:	± 3%
Illumination	:	3 sides illumination with detachable LED lights (10000 LUX or 23000 LUX)



Stability Chamber

Temperature Range	:	Lights Off: 5°C to 60°C, Light On: 10°C to 60°C
Temperature Controller	:	Digital Pid Controller with Sv & Pv Values
Temperature Accuracy	:	± 1%
Humidity Range	:	50% to 90%
Humidity Controller	:	Digital Pid Controller with Sv & Pv Values
Humidity Accuracy	:	± 3%
Illumination	:	3 sides illumination with detachable LED lights (10000 LUX or 23000 LUX)



High Speed Cooling Centrifuge

Certification	:	Yes
Weight	:	1.5kg
Voltage	:	220V
Power(W)	:	12-24KW
Working Pressure	:	Normal Pressure
Frequency	:	50-60HZ



OUR PRODUCTS

Mini Centrifuge

Max. Speed	:	7200rpm
Max. RCF	:	2680×g
Rotor Capacity	:	0.2/0.5/1.5/2.0mL×8; 0.2mL×16 PCR strips or
0.2mL×2 PCR 8 strips		
Run Time	:	Continuous operation
Driving Motor	:	DC motor
Power	:	AC110-240V/50Hz/60Hz
Noise Level	:	≤ 45db



PCR Plate Centrifuge

Rotating speed	:	2200~2800rpm
Timing Range	:	15sec ~ 1min59sec
Max(RCF)	:	550g
Acceleration Time	:	≤ 10sec(0 to 2800rpm)
Brake time	:	≤ 4sec(2800rpm to 0)
Lid Open Auto Stop	:	Yes
Short Run	:	Yes
Capacity	:	PCR plates



Analytical Weighing Balance

Standard Features:

- High contrast, Large Backlit LCD Display for easy viewing with (Advance Eye protection)
- Based on EMFC Brilliant MONOLOG single block technology
- Strong anti-shaking software for accurate result in normal vibration surface
- Standard RS 232 C interface USB port, easy to connect with PC / Printer
- Single touch key Fully Auto External / internal calibration
- Overload protection design.



DNA Electrophoresis

Warranty	:	12 Months
Production Capacity	:	200-500m2/h
Application	:	Capillary Electrophoresis
Weight	:	0-10kg
Automation Grade	:	Automatic
Maximum Pressure	:	170 Kgf/CM2
Power Supply	:	230 Volt/ 50 Hz



Gel Documentation System

Model	:	IG-618GD
CCD	:	5.0 Megapixels/D 16bit; pixel density: 16 bit
Pixel Size	:	2.4 μ m x 2.4 μ m
Lens	:	Motorized F1.2 ultrafast lens
White light transmission	:	LED white light plate; Sample area: 20*32cm
Epi-white light	:	Double white LED
UV Transmission	:	Sample area: 21*26cm, Wavelength 302nm; (Optional 254nm, 365nm)



OUR PRODUCTS

Hot Air Oven

Temperature range	:	Ambient + 5°C to 250°C (Optional 300°C)
Temperature Accuracy	:	± 1°C
Temperature Sensor	:	Pt100
Temperature controller	:	Microprocessor PID controller , Display of SV & PV
Construction	:	Double walled
Inner chamber	:	Stainless steel Mild steel 304
Exterior	:	Powder Coated
Insulation	:	Glass Wool



Laminar Air Flow Bench

Air flow direction	:	Vertical / Horizontal
Air cleanliness	:	Class 100
Construction	:	SS / Powder coated MS / GI sheet/ wooden
Sash (front door)	:	Manual sliding type (Acrylic transparent)
Side panels	:	Acrylic / polycarbonate / SS
Air velocity	:	0.45 m/s to 0.65 m/s
Illumination	:	Fluorescent or LED light
Noise level	:	65 ± 5 db



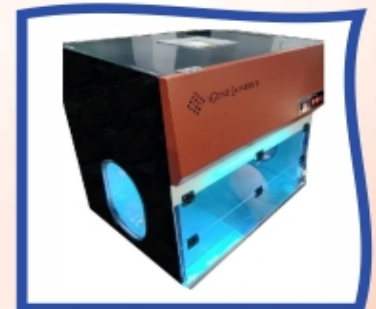
PCR Thermal Cycler

Material	:	Plastic
Shape	:	Rectangular
Application	:	Laboratory
Color	:	White
Voltage	:	220V
Power Source	:	Electric



PCR Workstation

Material	:	Steel
Shape	:	Rectangular
Application	:	HOSPITAL
Feature	:	Corrosion Proof
Appearance	:	Modern
Finishing	:	Polished



Vertical Autoclave

Material	:	Stainless Steel
Shape	:	Vertical
Color	:	Grey
Voltage	:	220V
Power	:	1kw
Packaging Type	:	Carton Box



OUR PRODUCTS

Vertical Electrophoresis

Wire Type	:	Pure Platinum Wire is Used in Electrode.
Moulded	:	N Single Piece Made of Polycarbonate
Power Source	:	Electrical
Warranty	:	1 Year
Weight	:	4 kg
Voltage	:	220 V



Vortex Mixer

Specifications	:	IG-VMS
Max Speed	:	2500 RPM
Orbital diameter	:	4 mm
Motor type	:	Brushless DC
Max Load Capacity	:	200 gm
Speed accuracy	:	± 5%
Dimensions	:	127 x 130 x 160 mm
Power Supply	:	220 - 240VAC, 50Hz



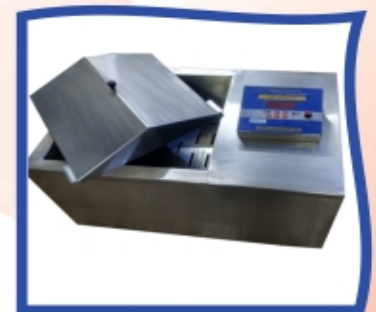
Serological Water Bath

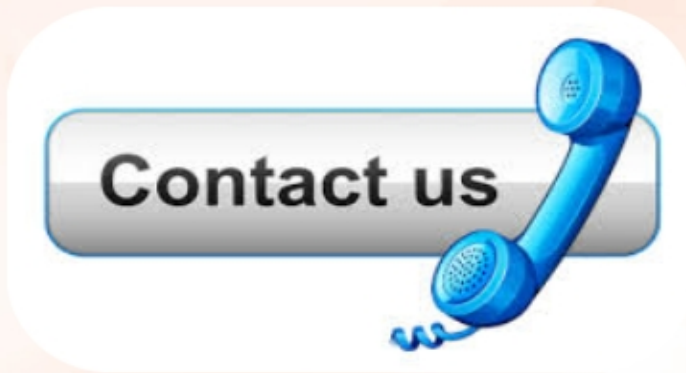
Material	:	Stainless Steel
Shape	:	Rectangular
Application	:	Laboratory
Color	:	Grey
Voltage	:	220V
Power	:	1-3kw
Driven Type	:	Electric



Digital Water Bath Shaker

Material	:	Stainless Steel
Application	:	Laboratory Use
Color	:	Grey
Feature	:	Longer Operational Life, Smooth Performance, User Friendly Control Features
Voltage	:	230 V Ac
Power Source	:	Electric
Automation Type	:	Automatic





IGENE LABSERVE

Innovative • Interactive • Intuitive

Mr. Vikrant Yadav

16/2, Ashok Nagar, Delhi, India - 110018

Mobile +91-9310535052, +91-9310696848

Tel. : +91-11-79613060

Email : info@igenels.com | Web. : <https://www.igenelabsolve.in>

<https://www.exportersindia.com/igene-labsolve-private-limited/>