



*We Compete
with Quality...*

*Not the
Competitor...*

Ganga R. K. Industries Pvt. Ltd.
G.I.D.C. Metoda, Rajkot.

Kusum Casting Pvt Ltd
M.I.D.C. Shirol, Kolhapur

Steel forge and cast industries
G.I.D.C. Bamanbore, Dist: Suredranagar

(An ISO 9001:2000 COMPANIES)

QUALITY INSPECTION FACILITIES



Sand Testing Lab



Sand Testing Lab



Micro Analysis



Hardness Testing



Spectro Analysis



Visual Inspection



Mould Hardness Inspection



Core Scratch Hardness Inspection

OUR VALUABLE CUSTOMERS

- Kirloskar Oil Engines Ltd., - Pune
- Kirloskar Oil Engines Ltd., - Kagal
- Kirloskar Brothers Ltd. - Devas
- Kranti Industries Pvt. Ltd., - Pune
- VST Tillers Ltd. - Bangalore.
- Glonet Marketing Pvt. Ltd.
- Manugraph Industries Ltd. (Unit I & Unit II)
- Ghatge Patil Industries Ltd.
- Eicher Tractors
- Emerson Industrial Automation Electric Power Generation Pvt. Ltd. - Bangalore
- Sumo International Pvt. Ltd., - Mumbai
- Indokoyo Power Products, - KSEZ
- Metro Exporters Pvt. Ltd., - Mumbai
- Al Nahda Industrial Factory, - Lebanon



Ganga R K industries Pvt. Ltd.

An ISO 9001:2000 Company

Plot no.G833, G.I.D.C. Lodhika, Metoda, Ph.(02827)287415.

Email : mktg@asiadieselexports.com | Website: <http://www.Indokoyo.com>

Kusum Castings Pvt. Ltd.

An ISO 9001:2000 Company

C-38/2, M.I.D.C., Shirol, Kolhapur-416 122 (India) Phone : +91-230-2460931, Fax: +91-230-2468905

Email : deepak@kusumcastings.com | sales@kusumcastings.com | Website: <http://www.kusumcastings.com>

Steel Forge And Cast Ind.

Plot No.104A/105, G.I.D.C. Bamanbor, Ta. Chotila, Dist.Surendranagar.(Guj)india.

Phone : 02751-240238,240329 , Email : rgkotecha@rgkgroup.net

COMPANY PROFILE

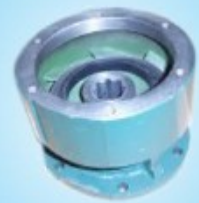
The **RGK GROUP OF COMPANIES** are involved in the various engineering components manufacturing & the assemblies, the group is involved in the sheet metal work & the casting manufacturing in Maharashtra & Gujarat.

In the group of industries Kusum Casting Pvt. Ltd. / Ganga R. K. Industries / Steel Forge & Cast Industries are involved in the manufacturing the Graded Casting to fulfill various industrial sector like Diesel Engine, Agricultural Product, Automobile, Earth Moving Product, Machine Parts, Transmission equipments etc.

Companies are Managed by the professional technocrat with skilled man power alongwith well equipped equipments and supported by the Advance machine shop having the good quality CNC & VMC machines.

The location of the companies are well connected by the Road, Air, Rail facilities which helps in good transport & fast services; they are connected with Metro cities like Pune / Mumbai / Ahmedabad and the Ports, the location is ideal for availability of the good skilled manpower.

PRODUCT LIST



EQUIPMENT LIST

Equipments in the Foundry	Kusum Casting pvt ltd	Ganga R.K industries	Steel Forge & cast Industries
			Fully Equipped with DISA INDIA LTD
Molding Facilities	Two lines of molding machine 450 kg capacity	Hand molding facility with the 350 kg capacity	One line of molding machine 450 kg capacity
Mold Handling system	By rail	Manual	Fully Automatic with the Push pull cylinder
Box Size	700mm x 600mmx 200/250 mm height with extension of the 100 mm the height can go up to 300 mm	the flexible Box size	700mm x 600mmx 200/250 mm height with extension of the 100 mm the height can go up to 300 mm
	600mm x 500mmx 200/250 mm height with extension of the 100 mm the height can go up to 300 mm		
Mixer	Intensive mixer -500 kg & 300 kg capacity	Intensive mixer - 100 kg capacity	Intensive mixer -500 kg , with the control panel to control the addition of the Additives & water by PLC
Sand Plant	Fully automatic Sand plant by handling the capacity of 17 Mt sand /hour, with Sand collar, Belt conveyers,Vibro Knock out	manual operation	Fully automatic Sand plant by handling the capacity of 17 Mt sand /hour, also have the provision for the 30 mt sand /hour with Sand collar, Belt conveyers,Vibro Knock out
Melting			
a) Induction Furnace	450 Kw with Two no's of 500kg pot capacity by Electrotherm	100 Kw with 150kg pot capacity by Electrotherm	450 Kw with Two no's of 500kg pot capacity by Indutotherm
b) Cupola	Two cupola - 18"/ 24"	Two cupola - 18"	Two cupola - 18" Designed by Teri
Quality Checking Equipment	Spectro,CE Meter, Micro scope with Image analyzer checking, Well Equipped lab for the testing the incoming material as well as Sand properties	CE meter, Well Equipped lab for the testing the incoming material as well as Sand properties	Spectro,CE Meter, Micro scope with Image analyzer checking, Well Equipped lab for the testing the incoming material as well as Sand properties
Cold Box core Shooter	10 lit capacity - horizontal Parting	5 lit capacity vertical parting	10 lit capacity - horizontal Parting with double station
Machine Shop	CNC - 2 Nos. VMC - 2 Nos.		CNC - 4 Nos. VMC - 2 Nos.