

# Flow IoT GATEWAY

Rev. : January 22, 2020

## Product Overview

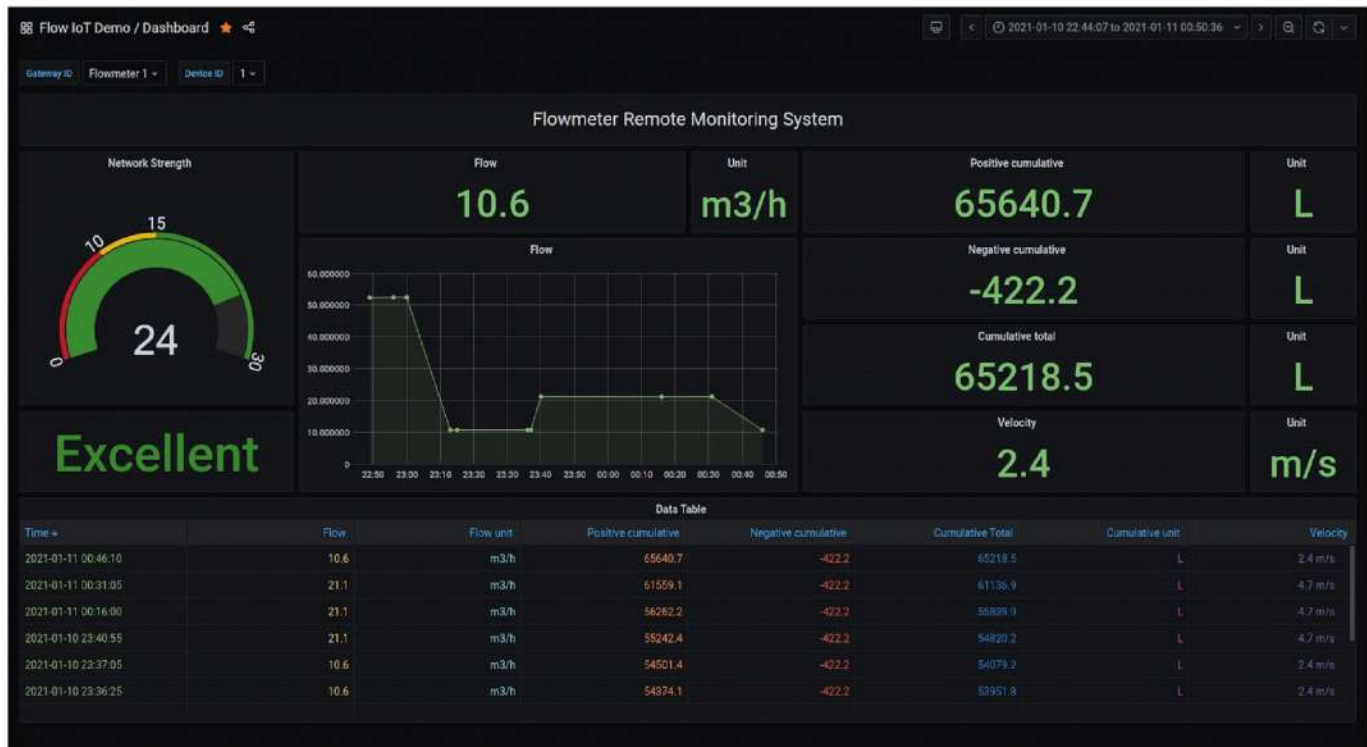
With our Flow IoT Gateway you can collect flow meter data directly from RS485 Enabled flow meter and make this data into actionable insights through user-friendly cloud based dashboarding so you can make better decisions based on facts.

With our cloud based dashboarding, we can help you to bring more insights of liquid (water, chemical etc.) usage in the plants and machines in a single platform eliminating the complex multi software, expensive software thus bringing down the IT capital costs.

## Features:

- 1 x RS-485 port for Modbus
- OTA (Over The Air) Firmware support.
- LED Indicator provides Power, Network, Cloud and Communication status.
- Keep Alive command to maintain socket connection
- Robust Industrial Design & Easy to install and integrate
- Visualize the collected data on a dashboard
- Analyze incoming data to derive actionable insights
- Store data for reporting and historical analysis
- Automatic reports generation with defined time intervals and to configure mails

# Sample Dashboard :



## Dashboard Parameters :

- Flow
- Positive cumulative total
- P+N cumulative total
- Dynamic units change as per the flow meter settings.
- Velocity
- Negative cumulative total
- Network strength & RSSI signal quality
- historical flow data

## SMS Features :

- 1 Admin + 3 Users access
- Auto Status Message two times in a day
- SMS Accepted only from the authorized number
- Date and Time stamp in the message
- Automatic time aqasion from the network
- Instantaneous status can be inquired

# Technical Specifications

Input voltage	24V DC, 2A
Indication	4nos LED - Power, Network, Cloud and, Communication
Network Type	GSM, Low Power 2G ( Quad-band 850/900/1800/1900MHz )
Cloud Communication	MQTT Protocol
Communication Channel	RS-485
Data update frequency	15 Min to 1 Day - step interval Settable from dashboard
Historic data storage	Last 3 Months
SMS Communication	Available
Daily SMS Alert	Available to maximum 3 Users ,2 times in a day
Daily SMS Alert Time	Settable from SMScommand
Instantaneous flow meter status SMS	Available
Mounting	DIN Rail Mount
Mounting Type	Snap In
Enclosure Material	ABS (IP20)
Operating Temperature	0 to 70 Degree C
Operating Humidity	95% RH
Dimension (W x H x D)	Width: 90 mm, Height: 105mm, Depth: 52mm
Weight	Approx. 100g

## AAVAD INSTRUMENT

216-217, Sangath Mall - 1, Opp. Engineering College, Chandkheda, Motera, Ahmedabad - 380005, Gujarat, India.  
**E :** aavad@aavadinstrument.com **W :** www.aavadinstrument.com **Ph :** +91-972-772-2823, 079-40095342.

**GSTIN :** 24AHZPG7088C1ZY | **PAN No. :** AHZPG7088C | **MSME No. :** GJ01A0024728

**Bank :** Kotak Mahindra Bank LTD | **A/c Name :** Aavad Instrument | **A/C No. :** 1411117509 | **IFSC Code :** KKBK0000839

TEMPERATURE - PRESSURE - FLOW - LEVEL - PROCESS CONTROL