



Innovate in the Sign of
**MADE IN INDIA
PRODUCTS**

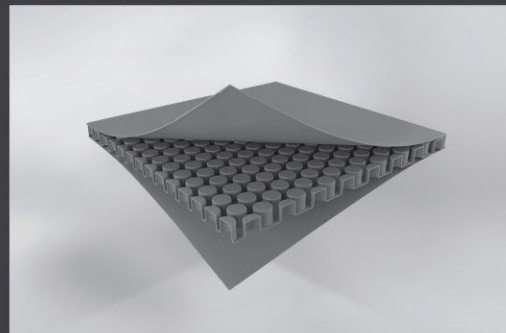
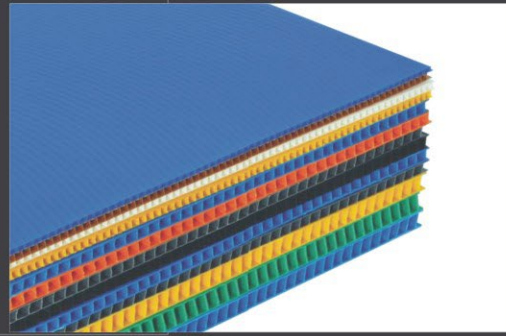
MANUFACTURE OF

- PP CORRUGATED SHEET
- BUBBLE GUARD SHEET
- PP HOLLOW CONSTRUCTION BOARD
(PLASTIC SHUTTERING SHEET)



INTEGRITY INNOVATION DEVELOPMENT

- PP CORRUGATED SHEET
- BUBBLE GUARD SHEET
- PP HOLLOW CONSTRUCTION BOARD
(PLASTIC SHUTTERING SHEET)



ABOUT COMPANY

STEPUP PLAST

Stepup Plast, 10 years of experience in building materials manufacturing and production. We are manufacturing PP Hollow Construction Board (Plastic Shuttering Sheet), PP Corrugated Sheet, and Bubble Guard Sheet. We are committed to providing our customers with the highest quality products and the best project solutions.

Stepup Plast is located in Morbi, Gujarat INDIA. It is a national high-tech import & export enterprise integrating R&D, production, sales and service.

Stepup Plast employs well-known domestic experts and has more than 10 years of research and development history of building materials.

Since its inception, the company has always adhered to the "quality first, integrity first, cooperation and win-win" business philosophy, so that the company's management standardization, institutionalization. It improves the industry competitiveness and social influence, constantly promote the renovation and upgrading of building technology.

Stepup Plast believe on "Reduce, Reuse and Recycle"



REDUCE

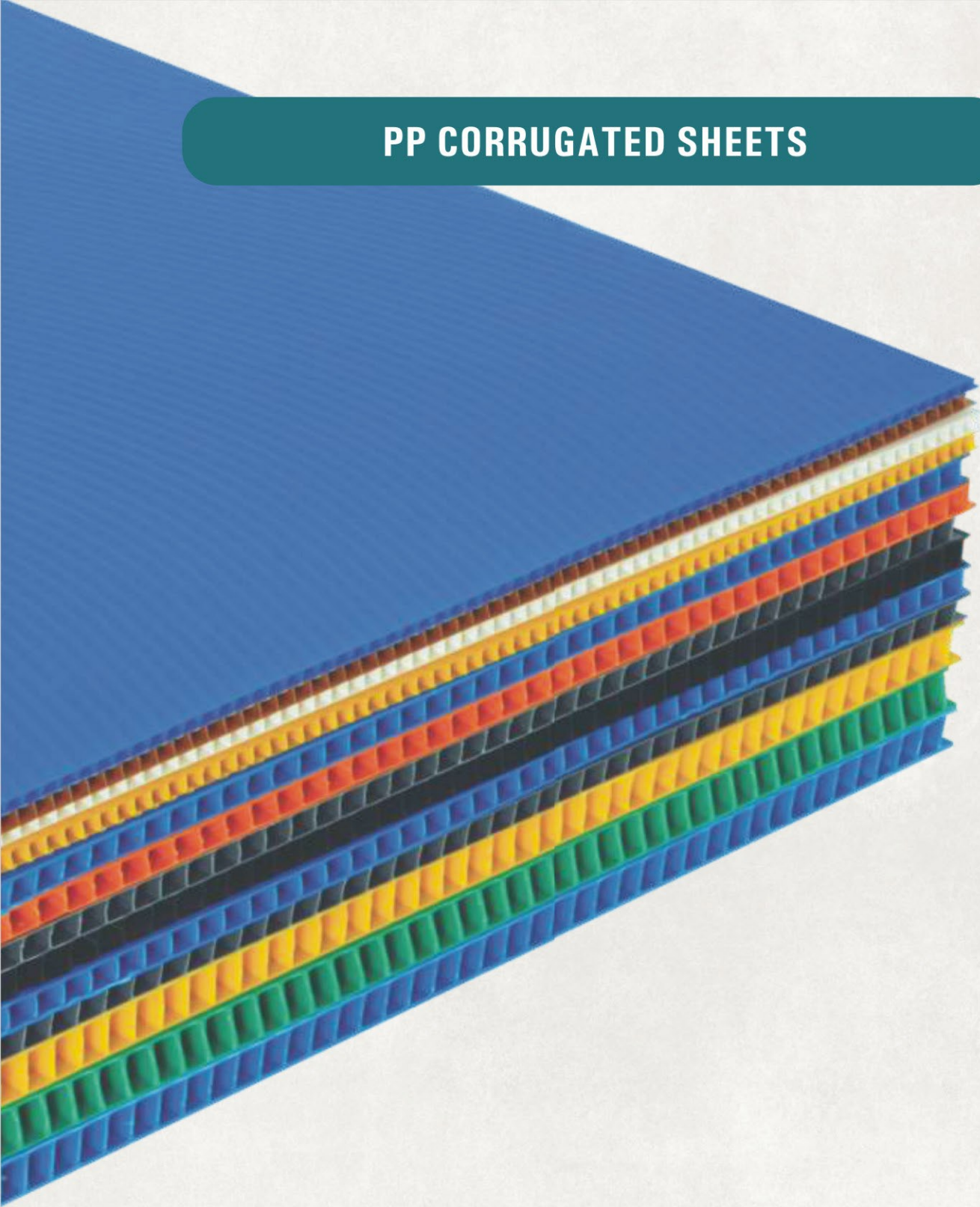


REUSE



RECYCLE

PP CORRUGATED SHEETS



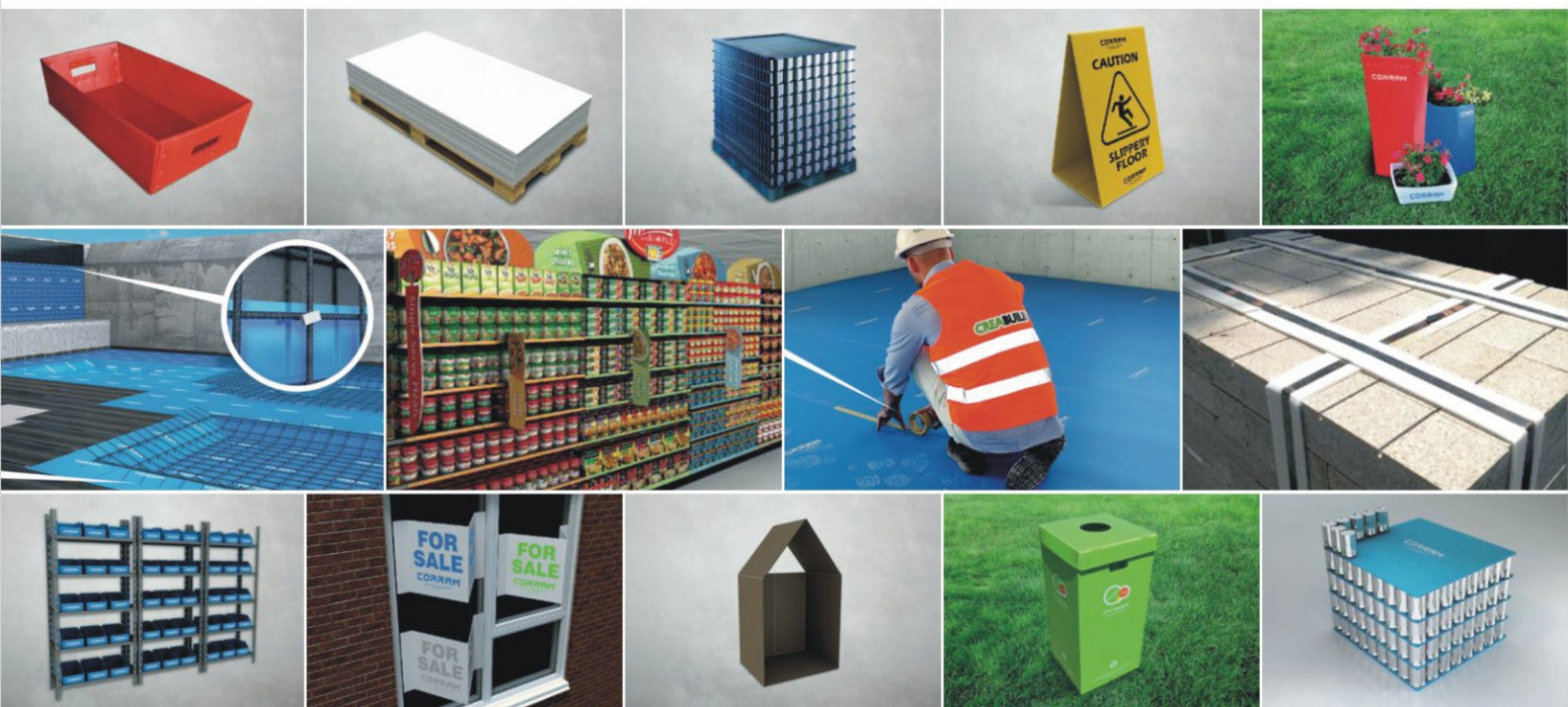
Thickness	Sheet Width	Sheet Length	Weight
2mm	1220mm - 1500mm	1830mm - As Req.	250-450 GSM
3mm	1220mm - 1500mm	1800mm - As Req.	350-750 GSM
4mm	1220mm - 1500mm	1800mm - As Req.	575-1200 GSM
5mm	1200mm - 1500mm	1800mm - As Req.	700-1600 GSM
6mm	1220mm - 1500mm	1800mm - As Req.	1000-1700 GSM
7/8mm	1200mm - 1500mm	1800mm - As Req.	1500-2000 GSM

/ AVAILABLE COLOURS



/ APPLICATIONS

- TEMPORARY FLOOR PROTECTION
- WALL AND DOOR PROTECTION
- WATERPROOF MEMBRANE PROTECTION
- BEAM FORMS
- HANDY MATS
- PRODUCT PACKAGING
- RECYCLE BINS
- WAREHOUSE STORAGE
- TRAYS AND TOTES
- SAFETY SIGNS
- FOR SALE SIGNS
- BARRICADES
- DISPLAY STANDS
- ADVERTISING DISPLAYS
- FAN HANDS
- LAYER PADS
- PRODUCT DIVIDERS
- CARGO PROTECTION
- STORAGE BOXES
- PRINTABLE SHEETS
- TREE GUARDS
- FLOWERPOTS
- TOY HOUSES
- DESIGN



Available on very short lead times



Both high & low volumes catered for

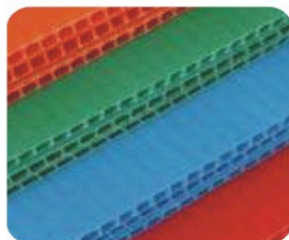
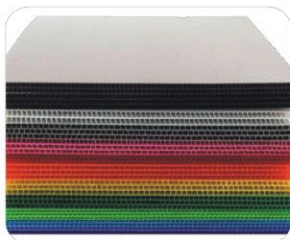


Custom designs from an experienced team

PP CORRUGATED SHEETS

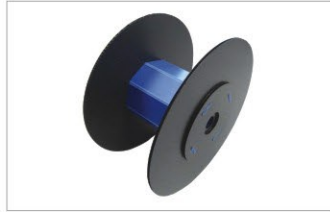
/ PP CORRUGATED SHEETS FEATURES

- Light Weight / Strong -** Its most important aspect is that it's light in weight and as In comparison with other it's strong and durable.
- Water/Chemical Proof -** It has no effect of water or any chemicals on it so no Atmospheric changes will effect it.
- Impact / Tearing Resistant -** It can withstand a longer period of time without getting Teared.
- Vermin Proof -** Vermin are pests that spread disease or destroy crops. Hence, its vermin proof which means it can be used for agriculture purposes.
- Puncture Resistant -** It's resistant to puncture so it will last more.
- Finest Surface -** We offer one of the finest and smoothest surface
- High Insulation -** Allows comparatively lesser heat to pass through it.
- Custom Made -** We offer Customization and it can be done for a particular order.
- Scratch Resistant -** Our Surface will not easily get damaged by scratching.
- Easy Fabrication-** Can be easily used for fabrication
- Load Bearing Strength -** It has Capacity to bear quite much amount of load.

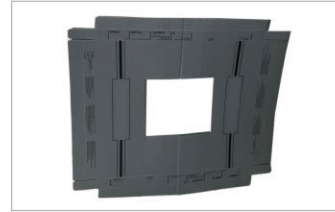




PP CORRUGATED BOX
FOR AUTO PARTS



PP CORRUGATED SHEET
FOR CABLE REEL WRAPS



PP CORRUGATED SHEET
FOR CERAMIC TILES



PP CORRUGATED SHEET
FOR CONSTRUCTION



PP CORRUGATED SHEET
FOR FLOOR PROTECTION



PP CORRUGATED BOX



PP CORRUGATED SHEET
FOR AUTO PARTS



PP CORRUGATED BOX
FOR LOGISTIC SOLUTIONS



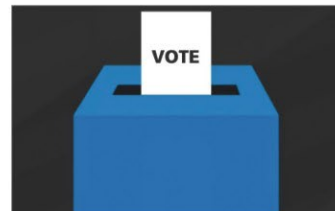
PP CORRUGATED SHEET
FOR CONSTRUCTION



PP CORRUGATED TRAY
FOR BLOOD CARRYING BAG



PP CORRUGATED BOX
FOR STATIONARY PACKAGING



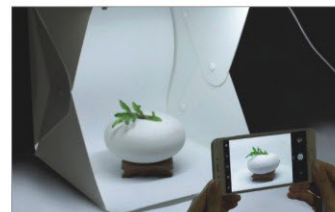
PP CORRUGATED SHEET
FOR VOTING BOOTH



PP CORRUGATED BOX
FOR VEGETABLES PACKING



PP CORRUGATED BOX
WITH PARTITION



PRODUCT PORTFOLIO
PHOTOGRAPHY



PP CORRUGATED BOX
FOR ELECTRONICS INDUSTRY



PP CORRUGATED BOX
FOR FRUITS PACKAGING



PP CORRUGATED BOX
FOR LOGISTICS SOLUTIONS

BUBBLE GUARD SHEET

StepUp Bubble Guard gets its strength from the unique circular honeycomb structure that forms the core of the products, while the air-lock technology creates a cushioning effect to ensure protection. The patented structure is sandwiched between multiple layers of flat polypropylene, resulting in a high strength-to-weight ratio, making these panels tough and durable, yet light weight.



Honeycomb Structure



Air-Lock Technology



Uniform Strength



High Impact Resistance



Light Weight



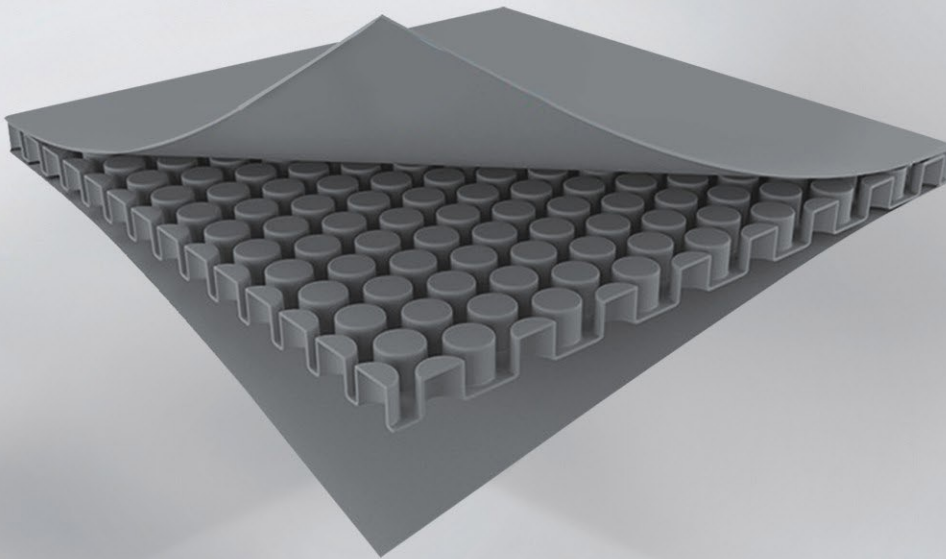
Waterproof



100% Recyclable



Easy to Process and Fabricate



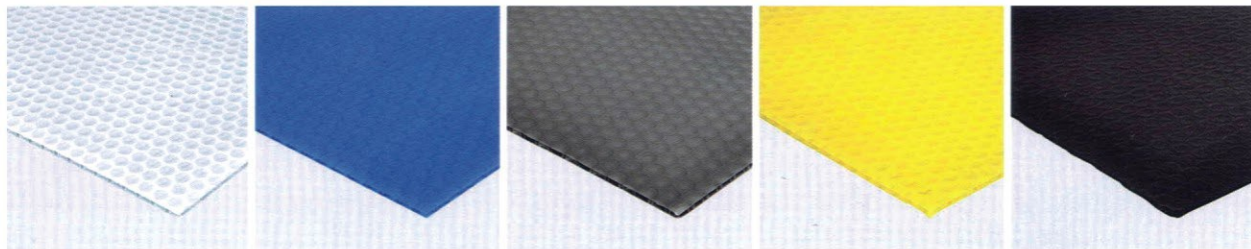
/ APPLICATIONS INDUSTRIAL

- Steel Coil wrapping
- Cable wire drum wrapping
- Metal Packaging
- Separator Part
- Automobile Packaging

/ AVAILABLE PRODUCT RANGE

Thickness in mm	GSM	Width & Length
2mm - 5 mm	125 GSM to 1500 GSM	As per your requirement

/ AVAILABLE PRODUCT COLORS



White

Blue

Grey

Yellow

Black

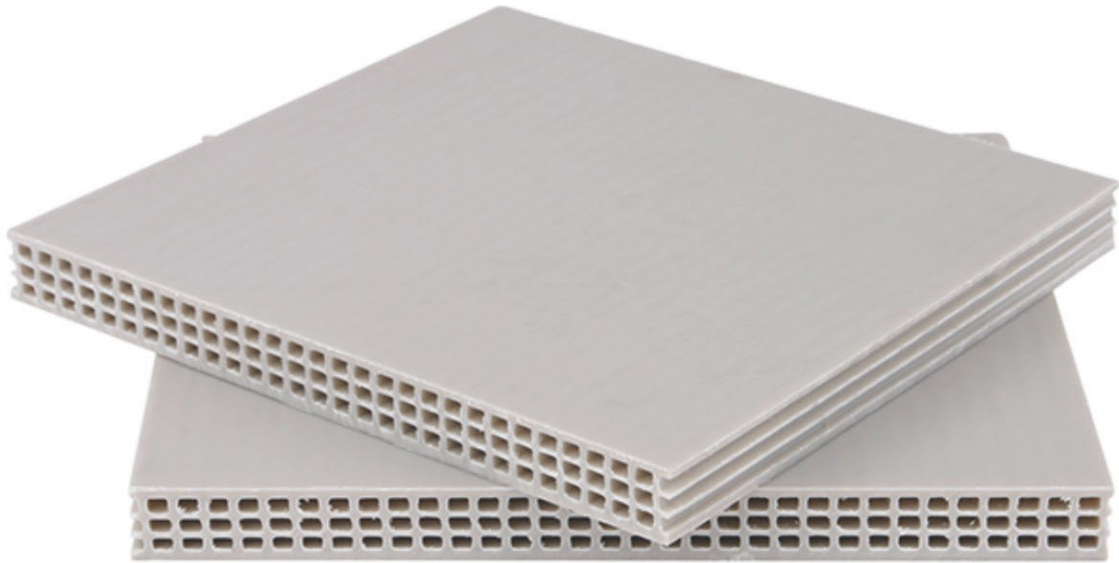
/ COMPARISON OF POP AND STEPUP FLOOR PROTECTOR

Description	POP	Bubble Floor Protector
Cost	Costly	Economical
Structure	Powder Form	Sheet & Roll Foam
Application Time	Lengthy	Fast & Easy
Readiness of surface after application	Minimum 5 hours	Immediate & ready to use
Protection after application	Limited floor protection	Complete floor protection
Durability	Short, One time application	Long
Skill	Only POP worker can do application	Do application yourself
Maintenance	Repeated application required for full coverage of floor	One time application for floor protection
Atmosphere	Give always dusty atmosphere	Clean working atmosphere
Usages	One time use	Multiple time use
Removal	Water & Labour required for removal	Do it yourself
Water Resistance	No	Water proof
Handling	Labour required	Easy to carry / remove

PRODUCT INTRODUCTION

PP HOLLOW CONSTRUCTION BOARD

(PLASTIC CENTERING SHEET)



STEPUP PLASTIC FORMWORK SHEET

Size	Thickness	Thickness Tolerance	Weight/pc	Weight Tolerance	Container Loading (pcs)	Container Loading (pcs)
Ft.	mm	mm	kg	kg	20GP	40HQ
1.22*2.44	12	0.5	23	1	560	1226
1.22*2.44	14	0.5	24	1	480	1080
1.22*2.44	15	0.5	26	1	456	1026
1.22*2.44	18	0.5	29	1	400	900

Cutting and customized size are available for formwork

/ APPLICATIONS

- ◆ Roof, Wall Beam, Column Form Work of any type of Building
- ◆ Infrastructure projects like
- ◆ Bridge
- ◆ Tunnel
- ◆ Water conservation
- ◆ Hydro power Project
- ◆ Mine dykes
- ◆ Underground works.



SHEAR WALL



COLUMN



BEAM



STAIR BRACE



STAIRS



ROOF

/ ADVANTAGES

- ◆ Reuse more than 60 times.
- ◆ Water resistant
- ◆ Eliminate Release oil, easily install and remove only simple tapping can be fall off the Plastipty.
- ◆ No expansion, no shrinkage, high strength
- ◆ Bearable temperature : -10°C to + 70°C
- ◆ Anti slip
- ◆ Shorten construction period
- ◆ Silicon glue can repair scratch & holes on the surface
- ◆ Only pressured water can clean the surface after use.
- ◆ Rent and reuse another construction site.



Sawing, drilling and nailing are all available. Formwork can be easily combined vertically and horizontally, quick and safe, and the supporting is also easy to be operated, advantageous to the organization construction, effectively improving the construction schedule.

Totally save 1/3 than plywood or steel formwork!

/ FEATURES

1. Easy to support and Dismantle :

With snap connection, the operation is simple and quick; the surface of Stepup Plastiplay is,

- ◆ Smooth, automatic demoulding
- ◆ Maintenance Free
- ◆ Use without release agent or Oil
- ◆ Uncommented surface after use
- ◆ Easy To Clean after use
- ◆ User friendly
- ◆ Stepup Plastiplay can be sawed, planed, drilled, nailed
- ◆ Stepup Plastiplay can be equipped with accessories to form any geometric shape
- ◆ Stepup Plastiplay is available in Color as per requirement
- ◆ Light weight of Plastiplay increase construction efficiency by 40% Compared to bamboo and wood formwork.
- ◆ Weather resistant Capacity
- ◆ Warp & Shrinkage free
- ◆ Eliminate Secondary Plastering Due to Smooth Surface Finish
- ◆ High tensile strength
- ◆ High compressive strength
- ◆ High UV resistance

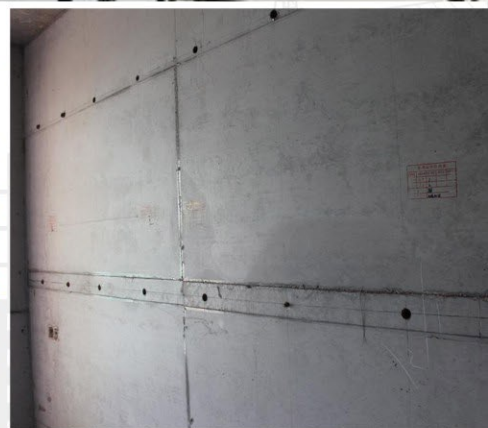
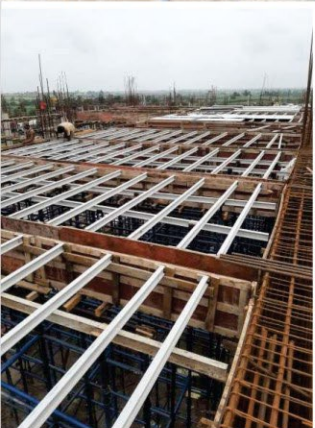
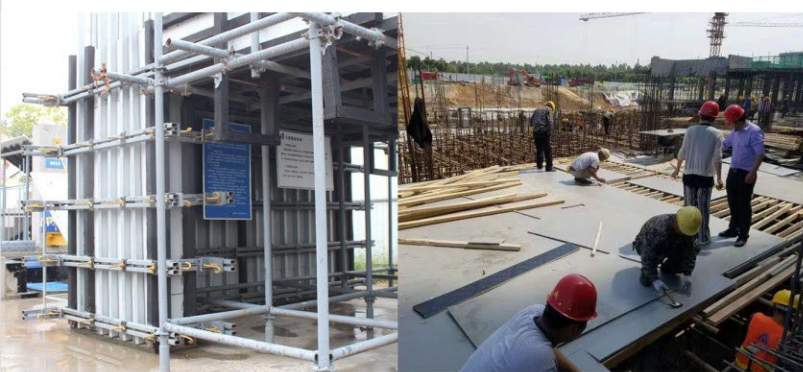
2. Environment friendly

- ◆ Stepup Plastiplay replace wooden formwork
- ◆ Stepup Plastiplay can be reused for more than 50-80 times
- ◆ Stepup Plastiplay is Recyclable
- ◆ No chemical residue like toxic gas after recycling

3. User friendly :

- ◆ Stepup Plastiplay can be sawed, planed, drilled, nailed
- ◆ Stepup Plastiplay can be equipped with accessories to form any geometric shape
- ◆ Stepup Plastiplay is available in Color as per requirement







BUILDING FORMWORK



/ COMPARISON



Comparison of Various Formwork

Picture						
Performance	Stepup Plastiply formwork	Modular plastic formwork	PVC plastic formwork	Plywood	Bamboo plywood	Metal formwork
Wear resistance	Good	Good	No	no	no	no
Corrosion resistance	Good	Good	No	no	no	no
Tenacity	Good	Bad	-----	-----	-----	-----
Impact strength	High	Easily broken	Normal	Poor	Poor	High
After absorbing water	No deformed	No deformed	Deformed	Deformed	Deformed	Deformed
Mold release property	No need release agent	No need release agent	Need	Need	Need	No
Warp after used	No	No	Yes	Yes	Yes	No
Weight(kg/sq)	6	10	15	7.2	7.5	-----
Recycle	✓	✓	✓	-----	-----	-----
Bearing capacity	high	Bad Easily Broken	Normal	Normal	Normal	Hard
Eco-friendly	✓	✓	✓	-----	-----	-----
Cost of use	Low	Higher	High	Higher	higher	Higher
Reusable time	Over 60	Over 60	20-30	3-6	6-8	100

PRODUCT APPLICATION

- Roof Forming
- Building Wall
- Pillars

1. FLEXIBILITY TEST



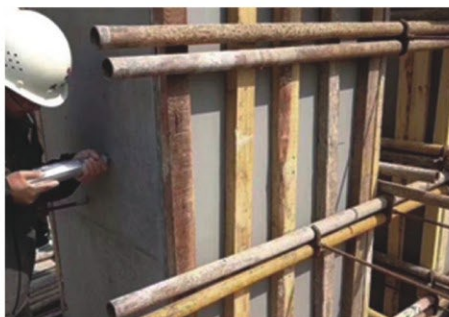
Toughness test when the formwork is bent: Use a forklift to crush the formwork that is not in the same plane (one side is grounded, one side is placed obliquely), and the formwork is intact without damage after rebound.

2. IMPACT STRENGTH TEST



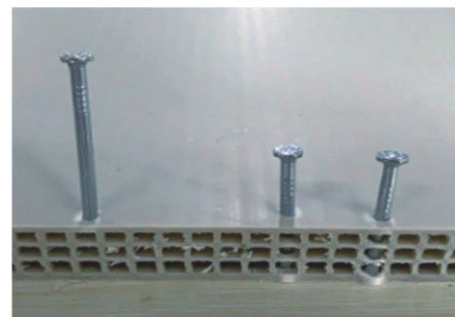
Use a small round head hammer to slam the smooth surface of the plastic building formwork and observe the surface depression. Good quality building templates will have depressions, but there will be no cracks.

3. SHRINKAGE TEST



Put the two formwork side by side on the wooden board to record the gap distance between the two nights, the difference is not more than 3mm-5mm compared with the previously measured data.

4. NAIL-HOLDING STRENGTH



Nail at a distance of 5mm from the edge of the plate. If there is no crack, this indicates that the quality of the plate is good; after the nail is nailed, observing whether the bonding state of the nail and the formwork is saturated and tight.



StepUp[®]

PLAST

STEP UP PLAST LLP

Survey No. - 292/P1, Plot No. - 1, Biliya Road,
Biliya, Morbi, Gujarat - 363 641.

Cell : +91 94286 29011
Email : stepupplastllp@gmail.com
Web : www.stepupplast.com

