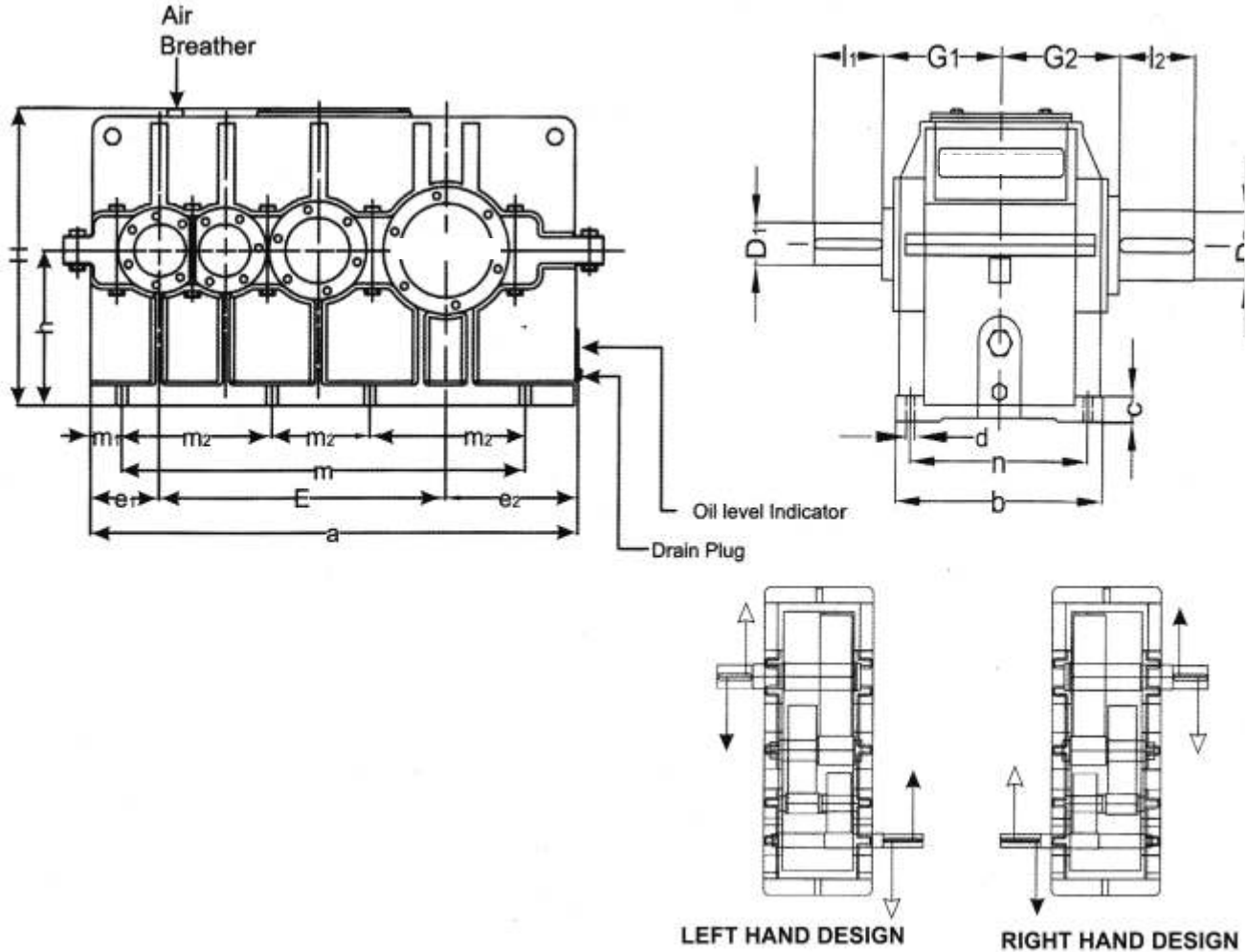


PRINCIPAL DIMENSIONS

Size	a	b	c	D1 for ratios				D2	e1	e2	E	G	h	H	I1 for ratios				12	m	m1	m2	m3	m4	n	Holding down bolts		Weight
				upto 20	above 20	upto 25	above 25								upto 20	above 20	upto 25	above 25								d	Nos.	
225	450	220	30	25	20	-	-	50	90	135	225	135	140	310	60	50	-	-	110	195	30	-	-	-	190	M12	6	90
285	590	265	35	30	25	-	-	60	135	170	285	150	180	385	80	60	-	-	140	250	45	-	-	-	220	M16	6	160
360	720	335	40	35	30	-	-	80	145	215	360	190	225	480	80	80	-	-	170	300	60	-	-	-	280	M20	6	310
450	900	390	45	45	35	-	-	90	180	270	450	225	280	590	110	80	-	-	170	365	85	-	-	-	330	M24	6	510
570	1120	510	55	50	40	-	-	110	205	345	570	280	355	735	110	110	-	-	210	460	100	-	-	-	430	M30	6	900
640	1250	550	60	55	45	-	-	120	230	380	640	310	400	830	110	110	-	-	210	525	100	-	-	-	470	M30	6	1170
720	1420	590	65	60	50	-	-	130	275	425	720	350	450	930	140	110	-	-	250	610	100	-	-	-	510	M30	6	1550
810	1600	730	80	-	-	65	55	140	305	485	810	390	475	1000	-	-	140	110	250	-	100	405	405	590	640	M30	8	2020
900	1750	840	90	-	-	70	60	150	320	530	900	450	500	1070	-	-	140	140	250	-	110	445	445	640	750	M30	8	2600
1010	1980	900	100	-	-	80	70	160	370	600	1010	500	560	1250	-	-	170	140	300	-	110	530	500	730	800	M30	8	3400
1130	2250	980	110	-	-	90	80	180	435	685	1130	530	630	1360	-	-	170	170	300	-	120	620	580	810	880	M36	8	4700
1270	2530	1050	120	-	-	100	90	200	505	755	1270	600	800	1680	-	-	210	170	350	-	120	730	640	920	950	M36	8	6000

- ✦ We reserve our right to change any dimension without prior notice.
- ✦ All dimension are in mm unless otherwise stated.
- ✦ Permissible deviations from the transmission ratio $\pm 3\%$



PRINCIPAL DIMENSIONS

Size	a	b	c	D1 for ratios		D2	e1	e2	E	G	h	H	I for ratios		t	m	m1	m2	n	Holding down bolts		Weight
				upto 125	above 125								upto 125	above 125						d	Nos.	
385	660	275	40	25	20	60	105	170	385	150	180	375	60	50	140	540	60	180	230	M16	8	183
485	840	335	50	30	25	80	140	215	485	190	225	475	80	60	170	720	60	240	280	M16	8	360
610	1030	390	60	35	30	90	150	270	610	225	280	590	80	80	170	870	80	290	330	M24	8	650
770	1280	510	70	45	35	110	170	340	770	280	355	760	110	80	210	1080	100	360	430	M30	8	1100
970	1600	590	80	50	40	130	205	425	970	350	450	930	110	110	250	1380	110	460	510	M30	8	1850
1090	1850	695	100	55	45	140	280	480	1090	370	500	1050	110	110	250	1560	145	520	595	M30	8	2500
1220	2070	840	90	60	50	160	320	530	1220	450	530	1140	140	110	300	1800	135	600	750	M30	8	3400
1370	2270	920	100	65	55	180	295	605	1370	470	600	1270	140	110	300	1950	160	650	800	M36	8	4700
1530	-	960	110	70	60	210	-	605	1530	500	630	-	140	140	350	-	150	-	840	M36	8	6000
1720	2684	1070	100	80	70	240	222	742	1720	600	800	1735	170	140	440	-	-	-	950	M42	8	8200
1930	3000	1560	460	90	80	280	270	800	1930	650	710	1600	170	170	560	2700	150	700	1320	M42	8	11300

- ✦ We reserve our right to change any dimension without prior notice.
- ✦ All dimension are in mm unless otherwise stated.
- ✦ Permissible deviations from the transmission ratio $\pm 3\%$

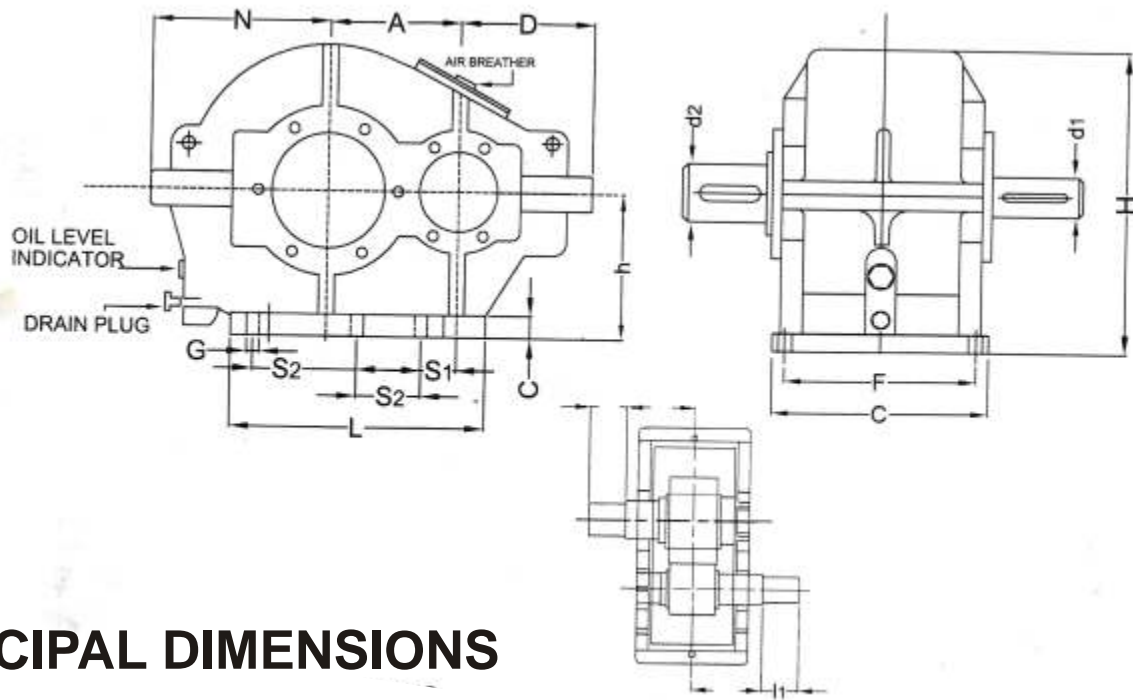


Nominal Power Rating In HP of Crane Duty Single Stage Gear Box

HA-100									HA-150									HA-200								
960				720				RPM	960				720				RPM	960				720				
I	II	III	IV	I	II	III	IV	DUTY RATIO	I	II	III	IV	I	II	III	IV	DUTY RATIO	I	II	III	IV	I	II	III	IV	
24.6	17.6	13.5	10.8	19.2	13.6	10.6	8.45	1.83	81.8	59	45.5	36.4	64.8	46	36.6	28.5	1.83	178	126	98	78	139	100	76.5	61	
21.3	15.1	11.7	9.35	17	12.1	9.35	7.5	2.3	71.5	50.7	39.4	31.4	56.7	40.5	31.2	25	2.3	158	112	87	69.5	125	89	69	55	
18	12.8	9.9	7.9	14.5	10.8	8.2	6.8	2.81	60.5	43	33.3	26.6	48.8	36	27.3	22.9	2.81	135	96	74	59.5	109	79.5	62	50	
15.6	11.1	8.6	6.85	12.8	9.1	7.05	5.6	3.5	52.7	37.4	29	23.2	43.2	30.6	23.7	19	3.5	120	85	66	52.50	98	70	54	43	
14.2	9.9	7.82	6.25	11.2	8	6.15	4.9	3.95	46.5	32.2	25.6	20.4	36.2	26	20	16	3.95	110	76.5	60.7	48.5	86	61	47.5	38	
12.6	9.15	7.05	5.5	9.9	7.2	5.5	4.35	4.5	42.2	30.6	23.6	18.3	33	24	18.5	14.6	4.5	99	71.5	55.5	43	78	57	43.7	35.4	
10.2	7.1	5.4	4.44	8.4	5.95	4.6	3.5	5.6	34.4	23.9	18.3	15.3	28.2	20	15.4	12.7	5.6	81.5	56.6	43.3	36.2	67	47.5	36.6	30.2	
8.26	5.75	4.4	3.6	6.7	4.7	3.66	3.02	6.6	27.9	19.4	14.8	12.4	22.8	16.2	12.5	10.3	6.6	66.1	47	35.2	29.4	54	38.4	29.5	24.3	
6.7	4.65	3.56	2.92	5.4	3.84	2.95	2.44	8	22.4	15	11.9	10	18.4	13.1	10.1	8.3	8	53	35.4	28.2	23.6	43.5	30.8	23.8	19.6	

HA-250									HA-300									HA-350								
960				720				RPM	960				720				RPM	960				720				
I	II	III	IV	I	II	III	IV	DUTY RATIO	I	II	III	IV	I	II	III	IV	DUTY RATIO	I	II	III	IV	I	II	III	IV	
346	246	190	152	270	192	151	119	1.83	664	470	364	292	520	370	286	229	1.83	1050	735	575	460	820	580	450	360	
308	218	169	135	244	173	134	107	2.3	572	405	314	252	453	322	250	199	2.3	910	645	500	400	720	512	396	317	
260	184	143	114	210	153	120	98.5	2.81	485	344	266	214	392	286	223	172	2.81	768	545	423	337	620	452	352	272	
235	167	130	104	192	136	105	84	3.5	420	300	231	185	344	244	189	151	3.5	667	465	367	294	545	386	300	240	
218	153	120	96	170	121	93.5	75	3.95	374	260	207	165	290	206	160	130	3.95	605	420	334	266	470	334	260	206	
193	140	108	84	150	109	84	69	4.5	336	243	188	146	262	191	145	118	4.5	530	384	297	231	414	302	232	186	
159	111	85.5	69	130	92.2	70.8	58.5	5.6	275	191	146	120	226	160	123	102	5.6	437	304	232	190	358	254	195	161	
129	89.6	69.5	56	105	74.5	57.2	47.2	6.6	223	155	118.5	97	182	129	99	82	6.6	354	246	188	154	290	206	158	131	
102	71	54.2	44.4	83.5	58.5	45.5	37.5	8	179	124	95.5	77.7	147	104	80	66	8	262	182	139	114	214	152	117	96	

HA-400								
960				720				RPM
I	II	III	IV	I	II	III	IV	DUTY RATIO
1570	1020	865	690	1225	870	673	538	1.83
1360	965	745	597	1080	765	595	475	2.3
1142	810	628	502	920	670	523	405	2.81
1000	715	552	440	818	580	450	360	3.5
909	630	502	400	710	505	390	312	3.95
810	585	455	352	630	460	352	277	4.5
652	454	346	283	535	380	292	240	5.6
528	368	280	230	433	308	236	195	6.6
390	271	207	170	320	227	174	144	8



PRINCIPAL DIMENSIONS

SIZE	HOUSING DIMENSION							FOUNDATION HOLE DETAILS					Weight (approx.)	
	HA	A	L	C	H	h	D	N	S1	S2	F	G	K	Nos.
100	100	260	154	233	125	95	-	30	170	115	15	18	4	40
150	150	330	190	323	170	115	225	35	230	150	17	22	4	82
200	200	410	225	423	225	142	275	45	300	180	17	25	4	132
250	250	505	300	515	265	165	330	45	190	230	25	25	6	255
300	300	580	330	610	315	190	420	45	230	260	25	30	6	341
350	350	695	385	697	355	220	465	55	280	315	32	35	6	640
400	400	870	400	792	400	253	500	110	350	320	32	35	6	856

SIZE	SHAFT					
HA	d ₁	l ₁	k ₁	d ₂	l ₂	k ₂
100	30	60	82	35	55	92
150	40	85	100	55	85	115
200	50	85	155	80	120	125
250	60	108	205	80	120	160
300	60	108	220	80	120	175
350	90	135	242	110	145	228
400	90	135	250	110	145	235

- ❖ We reserve our right to change any dimension without prior notice.
- ❖ All dimension are in mm unless otherwise stated.
- ❖ Permissible deviations from the transmission ratio $\pm 3\%$

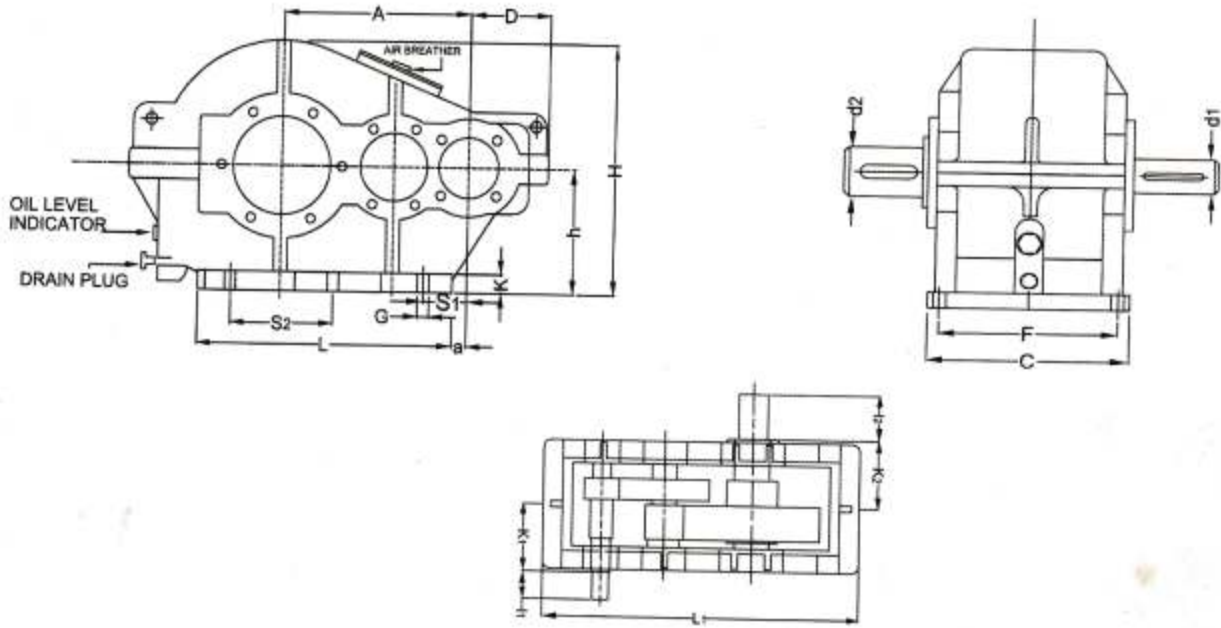


Nominal Power Rating In HP of Crane Duty Single Stage Gear Box

HR-250									HA-350									HA-400							
960				720				RPM	960				720				RPM	960				720			
I	II	III	IV	I	II	III	IV	DUTY RATIO	I	II	III	IV	I	II	III	IV	DUTY RATIO	I	II	III	IV	I	II	III	IV
24.4	17	12.7	9.5	19	12.7	10.6	7.4	8.23	55.5	39	30.4	21	43	30.4	24.2	16.8	8.23	75	54	41.5	33	60.5	42.5	34	26.5
20.1	13.8	10.6	7.4	16	10.6	8.5	6.35	10.35	46	32.6	25.2	16.8	37	25.2	20	13.7	10.35	66	45.5	37	28.6	53	37	29.6	22.2
17	11.7	9.6	6.4	13.8	9.5	7.4	5.3	12.64	39	27.4	21	14.7	31.5	22	16.8	11.6	12.64	57.2	39.2	31.8	24.4	46.5	31.8	25.4	19.1
14.9	9.5	8.5	5.3	10.6	7.4	6.4	4.3	15.74	33.6	23.1	17.9	12.6	25.2	17.9	13.7	9.5	15.74	49.8	34	26.5	19.1	39.2	26.5	21.2	14.8
11.7	8.5	6.4	4.3	8.5	6.4	4.3	3.2	20.49	26.3	18.9	13.7	9.5	21	14.7	10.5	7.4	20.49	44.5	30.8	24.4	17	35	24.4	19.1	12.7
9.6	7.4	5.3	3.2	7.4	5.3	4.3	3.2	23.34	23.1	16.8	12.6	8.4	18.9	12.6	9.5	6.3	23.34	39	27.6	21.2	14.8	32	21.2	17	11.7
7.4	5.3	4.3	3.2	6.4	4.3	3.2	2.1	31.50	17.8	12.6	9.5	6.3	13.7	9.5	7.4	5.3	31.50	30.4	22	14.7	10.6	23.2	17	11.7	8.5
6.4	4.3	3.2	2.1	4.3	3.2	2.1	2.1	40.17	14.7	10.5	7.4	5.3	10.5	7.4	5.3	4.3	40.17	25.5	18	12.7	8.5	21.2	14.7	9.5	7.4
5.3	3.2	2.1	2.1	4.3	2.1	2.1	1.1	48.57	12.6	8.4	6.3	4.3	9.5	6.3	4.3	3.2	48.57	23.4	15.9	10.6	7.4	18	11.7	8.5	5.3

HR-500									HA-650									HA-750							
960				720				RPM	960				720				RPM	960				720			
I	II	III	IV	I	II	III	IV	DUTY RATIO	I	II	III	IV	I	II	III	IV	DUTY RATIO	I	II	III	IV	I	II	III	IV
184	126	96	65	147	102	75.5	52	8.23	358	252	196	143	274	201	160	113	8.23	610	435	302	204	485	340	250	161
153	107	76.5	52.5	124	86	62	41	10.35	306	210	171	118	244	170	135	92	10.35	510	356	238	165	410	284	193	152
129	92	64	43.5	104	71	51	35	12.64	263	181	144	96	208	145	114	77	12.64	432	306	203	136	342	238	159	109
111	76	49	34	84	59	42	29	15.74	221	150	118	78	175	120	93	62	15.74	370	255	167	116	279	197	134	93
78	55	37	25	62	43	29	20	20.49	199	136	90	60	156	108	71	49	20.49	292	195	129	85	228	155	100	69
72	50	34	2.5	57	40	27	18.5	23.34	181	123	81	54	142	97	63	44	23.34	264	176	119	78	208	140	90	63
61	42	29	20	47	34	23	16	31.50	138	95	62	42	108	77	49	34	31.50	206	142	92	63	159	111	74	51
48	34	22	15	37	25	17	11.6	40.17	113	78	48	34	88	61	38	26	40.17	163	109	68	48	125	86	53	38
41	28.5	18	13	31.5	22	14	9.5	48.57	95	65	41	28.5	73	49	31.5	22	48.57	135	92	58	41	104	74	44	32

HR-850									HA-1000								
960				720				RPM	960				720				
I	II	III	IV	I	II	III	IV	DUTY RATIO	I	II	III	IV	I	II	III	IV	
1025	702	468	330	815	570	413	285	8.23	2050	1369	1050	739	1630	1086	835	588	
857	587	391	270	689	478	319	220	10.35	1714	1142	878	622	1378	918	706	493	
726	497	331	233	574	395	255	180	12.64	1452	968	691	490	1148	765	546	382	
622	426	284	200	469	323	215	153	15.74	1244	802	572	402	938	625	446	314	
426	292	195	139	333	228	152	108	20.49	852	591	422	297	666	475	339	240	
385	269	179	128	304	211	136	97	23.34	770	531	379	267	608	419	299	210	
301	206	137	98	232	159	106	76	31.50	602	415	296	208	462	318	220	155	
238	163	109	79	182	125	83	60	40.17	476	328	234	165	366	250	173	119	
197	135	90	65	152	104	69	50	48.57	394	271	193	136	307	211	146	102	



PRINCIPAL DIMENSIONS

SIZE	HOUSING DIMENSION								FOUNDATION HOLE DETAILS						Weight (approx.)
	A	a	L	C	H	h	D	L1	S1	S2	F	G	K	Nos.	kg.
250	250	28	300	230	320	160	111	555	60	236	190	17	18	4	100
350	350	60	415	290	393	200	123	710	100	310	250	18	18	4	175
400	400	80	490	310	505	250	140	826	110	370	270	17	23	4	270
500	500	80	620	360	591	300	150	985	130	240	310	18	23	6	410
650	650	75	840	470	716	320	200	1300	160	218	410	28	33	8	980
750	750	55	1025	510	745	320	207	1410	155	275	450	28	35	8	1200
850	850	75	1105	570	880	400	240	1640	155	300	510	33	38	8	1700
1000	1000	100	1350	660	972	400	257	1896	200	350	590	33	38	8	2850

SIZE	SHAFT					
	d1	l1	k1	d2	l2	k2
250	30	60	145	55	85	150
350	38	85	170	55	85	175
400	38	85	185	80	125	190
500	48	85	210	80	125	215
650	55	110	275	110	165	285
750	60	110	310	120	165	335
850	85	130	325	130	200	335
1000	85	140	380	170	240	390

- ✦ We reserve our right to change any dimension without prior notice.
- ✦ All dimension are in mm unless otherwise stated.
- ✦ Permissible deviations from the transmission ratio $\pm 3\%$



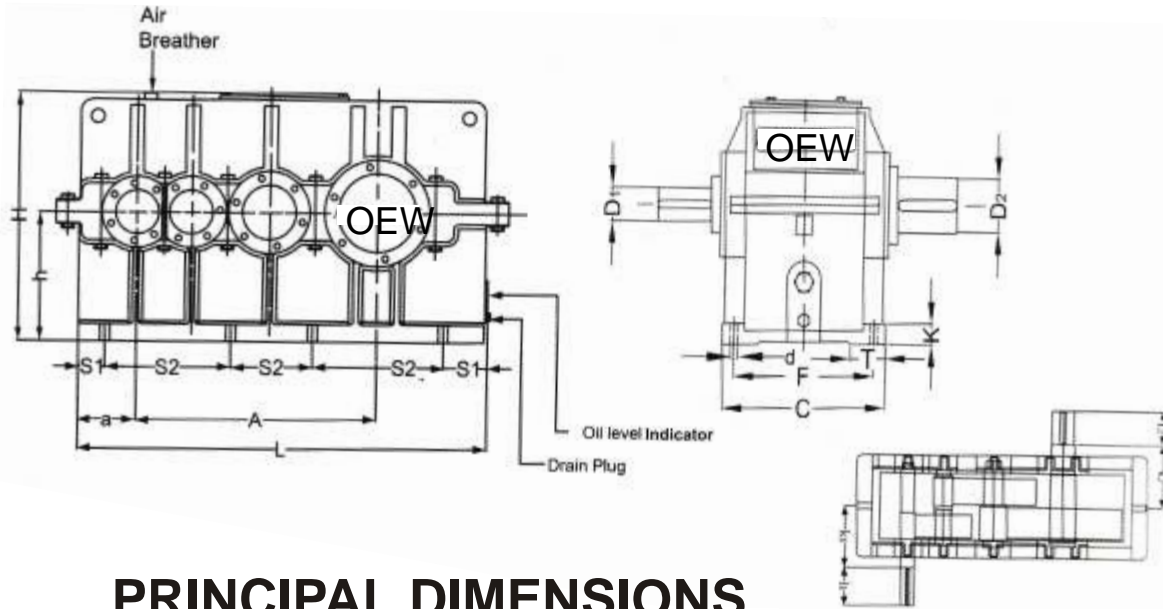
Nominal Power Rating In HP of Crane Duty Single Stage Gear Box

HC-400									HC-450								HC-500								
960				720				RPM	960				720				RPM	960				720			
I	II	III	IV	I	II	III	IV	DUTY RATIO	I	II	III	IV	I	II	III	IV	DUTY RATIO	I	II	III	IV	I	II	III	IV
16.8	12.1	9.9	7.2	13.1	9.4	7.7	5.6	31.5	24	17.2	14.2	10.3	18.7	13.4	11	8	31.5	33	23.7	19.5	14.2	25.7	18.5	15.2	11.1
13.9	10.0	8.2	6	10.8	7.8	6.4	4.6	40	19.7	14.1	11.6	8.5	15.4	11.1	9.1	6.6	40	27.6	19.8	16.3	11.9	21.5	15.4	12.7	9.2
11.5	8.3	6.8	4.9	9.0	6.5	5.3	3.9	50	16.3	11.7	9.6	7	12.7	9.1	7.5	5.5	50	22.8	16.4	13.5	9.8	17.8	12.8	10.6	7.7
9.6	6.9	5.7	4.1	7.5	5.4	4.4	3.2	63	13.7	9.8	8.1	5.9	10.7	7.7	6.3	4.6	63	18.4	13.2	10.9	7.8	14.4	10.3	8.5	6.2
7.7	5.5	4.5	3.3	6.0	4.3	3.5	2.6	80	11	7.9	6.5	4.7	8.6	6.2	5.1	3.7	80	15.2	10.9	9	6.5	11.9	8.5	7	5.1
7.0	5.0	4.1	3.0	5.5	3.9	3.2	2.3	90	9.8	7	5.8	4.2	7.6	5.5	4.5	3.3	90	13.8	9.9	8.1	5.9	10.8	7.8	6.4	4.6
6.2	4.4	3.7	2.7	4.8	3.4	2.8	2.1	100	8.9	6.4	5.3	3.8	6.9	5.0	4.1	3	100	12.3	8.8	7.3	5.3	9.6	6.9	5.7	4.1
5.1	3.7	3.0	2.2	4.0	2.9	2.4	1.7	125	7.2	5.2	4.2	3.1	5.7	4.1	3.4	2.5	125	10.2	7.3	6	4.4	8	5.7	4.7	3.4
4.1	2.9	2.4	1.8	3.2	2.3	1.9	1.4	160	5.8	4.2	3.4	2.5	4.5	3.2	2.7	1.9	160	8	5.7	4.7	3.4	6.3	4.5	3.7	2.7

HC-560									HC-630								HC-710								
960				720				RPM	960				720				RPM	960				720			
I	II	III	IV	I	II	III	IV	DUTY RATIO	I	II	III	IV	I	II	III	IV	DUTY RATIO	I	II	III	IV	I	II	III	IV
46.8	33.6	27.6	20.1	37	26.6	21.8	15.9	31.5	66	47.4	38.9	28.4	5.2	37.3	30	22.4	31.5	95	68.2	56	40.9	74	53.1	43.7	31.8
39	28	23	16.8	30.5	22.1	18.2	13.2	40	56	40.2	33	24.1	44.2	31.7	26	19	40	78	56	46	33.5	60.5	43.4	35.7	26
32.2	23.1	19	13.8	25.4	18.2	15	10.9	50	46	33	27.1	19.8	36.3	26.1	21.4	15.6	50	65	46.7	38.4	28	50.4	36.2	29.7	21.7
26.4	19	15.6	11.4	20.9	15	12.3	9	63	38	27.3	22.4	16.3	30	21.5	17.7	12.9	63	54	38.8	31.9	23.2	42	30.2	24.8	18.1
21.4	15.4	12.6	9.2	16.9	12.1	10	7.3	80	31	22.3	18.2	13.3	24.5	17.6	14.4	10.5	80	44	31.6	26	18.9	34.1	24.5	20.1	14.7
19.5	14	11.5	8.4	15.4	11.1	9.1	6.6	90	27	19.4	15.9	11.6	21.3	15.3	12.6	9.2	90	39	28	23	16.8	30.3	21.8	17.9	13
17.6	12.6	10.4	7.6	13.9	10	8.2	6	100	25	18	14.8	10.8	19.8	14.2	11.7	8.5	100	35	25.1	20.7	15.1	27.2	19.5	16	11.7
14.2	10.2	8.4	6.1	11.2	8	6.6	4.8	125	20.5	14.7	12.7	8.8	16.2	11.6	9.6	7	125	28.5	20.5	16.8	12.2	22.1	15.9	13	9.5
11.5	8.3	6.8	4.9	9.1	6.6	5.4	3.9	160	16.3	11.7	9.6	7	13	9.3	7.7	5.6	160	23.2	16.7	13.7	10	18	12.9	10.6	7.7

HC-800									HC-900								HC-1000								
960				720				RPM	960				720				RPM	960				720			
I	II	III	IV	I	II	III	IV	DUTY RATIO	I	II	III	IV	I	II	III	IV	DUTY RATIO	I	II	III	IV	I	II	III	IV
137	98.4	80.8	59	107	76.8	63.1	46	31.5	196	141	116	84.3	153	110	90.3	65.8	31.5	270	194	159	116	211	151	124	90.7
112	80.4	66.1	48.2	87.4	62.8	51.6	37.6	40	162	116	95.6	69.7	126	90.5	74.3	54.2	40	221	159	130	95	172	123	101	74
93	66.8	54.9	40	72.5	52.1	42.8	31.2	50	135	97	79.7	58.1	105	75.4	62	45.2	50	184	132	109	79.1	144	103	85	62
78	56	46	33.5	61	43.8	36	26.2	63	110	79	65	47.3	86	61.7	50.7	37	63	152	109	89.7	65.4	119	85.4	70.2	51.2
63	45.2	37.2	27.1	49	35.2	29	21.1	80	88	63.2	51.9	37.8	68.6	49.3	40.5	29.5	80	123	88.3	72.6	38	96	69	56.6	41.3
56	40.2	33	24.1	43.7	31.4	25.8	18.8	90	81	58.2	47.8	34.8	63.2	45.4	37.3	27.2	90	110	79	65	47.3	86	61.7	50.7	37
51	36.6	30.1	22	40	28.7	23.6	17.2	100	74	53.1	43.7	31.8	57.7	41.4	34	24.7	100	100	71.8	59	43	78	56	46	33.5
42	30.2	24.8	18.1	32.8	23.6	19.4	14.1	125	59	42.4	34.8	25.4	46	33	27.1	19.8	125	83	59.6	49	35.7	64.7	46.5	38.2	27.8
33	23.7	19.5	14.2	25.7	18.5	15.2	11.1	160	48	34.5	28.3	20.6	37.4	26.9	22.1	16.1	160	66	47.4	39	28.4	51.5	37	30.4	22.1

HC-1120									HC-1250								
960				720				RPM	960				720				
I	II	III	IV	I	II	III	IV	DUTY RATIO	I	II	III	IV	I	II	III	IV	
380	273	224	163	300	215	177	129	31.5	529	380	312	227	418	300	247	180	
311	223	183	134	246	177	145	106	40	431	309	254	185	340	244	201	146	
260	187	153	112	205	147	121	88.2	50	364	261	215	157	288	207	170	124	
213	153	126	91.6	168	121	99	72.2	63	300	215	177	129	237	170	140	102	
172	123	101	74	136	97.6	80	58.5	80	246	177	145	106	194	139	114	83.4	
157	113	92.6	67.5	124	89	73.2	53.3	90	221	159	130	95	175	126	103	75.3	
142	102	83.8	61.1	112	80.4	66.1	48.2	100	197	141	116	84.7	156	112	92	67.1	
115	82.6	67.9	49.5	91	65.3	53.7	39.1	125	162	116	95.6	69.7	128	92	75.5	55	
93	66.8	54.9	40	73.5	52.8	43.4	31.6	160	130	93.3	76.7	56	103	74	60.8	44.3	



PRINCIPAL DIMENSIONS

SIZE	HOUSING DIMENSION							FOUNDATION HOLE DETAILS						Weight (approx.)
	A	a	L	C	T	H	h	S1	S2	F	D	K	Nos.	kg.
400	400	70	650	270	50	415	200	45	280	225	16	21	6	267
450	450	80	730	300	52.5	460	225	50	315	250	16	23	6	370
500	500	95	820	330	55	510	250	55	355	280	18	25	6	465
560	560	110	920	370	60	565	280	40	280	315	20	28	8	640
630	630	120	1030	415	70	630	315	42.5	315	355	23	32	8	900
710	710	130	1160	470	80	705	355	47.5	355	400	25	35	8	1170
800	800	140	1300	530	90	800	400	50	400	450	27	38	8	1600
900	900	160	1460	590	100	895	450	55	450	500	30	40	8	2100
1000	1000	180	1620	650	110	995	500	60	500	560	33	43	8	2800
1120	1120	200	1820	730	120	1105	560	70	560	630	36	46	8	3700
1250	1250	230	2040	830	140	1235	630	75	630	710	39	50	8	5100

I < 70			I < 70			-		
d ₁	I ₁	k ₁	d ₁	I ₁	k ₁	d ₂	I ₂	k ₂
25	40	155	20	30	155	70	105	160
28	45	170	25	40	170	70	115	180
35	50	185	30	45	185	85	130	195
40	60	210	35	50	210	95	145	215
45	65	225	38	55	225	105	160	235
48	75	260	40	60	260	120	180	270
50	80	290	45	65	290	125	200	300
65	100	320	50	75	320	140	225	330
70	105	350	55	80	350	170	250	365
75	115	400	60	90	400	190	280	440
80	120	415	65	100	415	200	300	460

- ♣ We reserve our right to change any dimension without prior notice.
- ♣ All dimension are in mm unless otherwise stated.
- ♣ Permissible deviations from the transmission ratio $\pm 3\%$

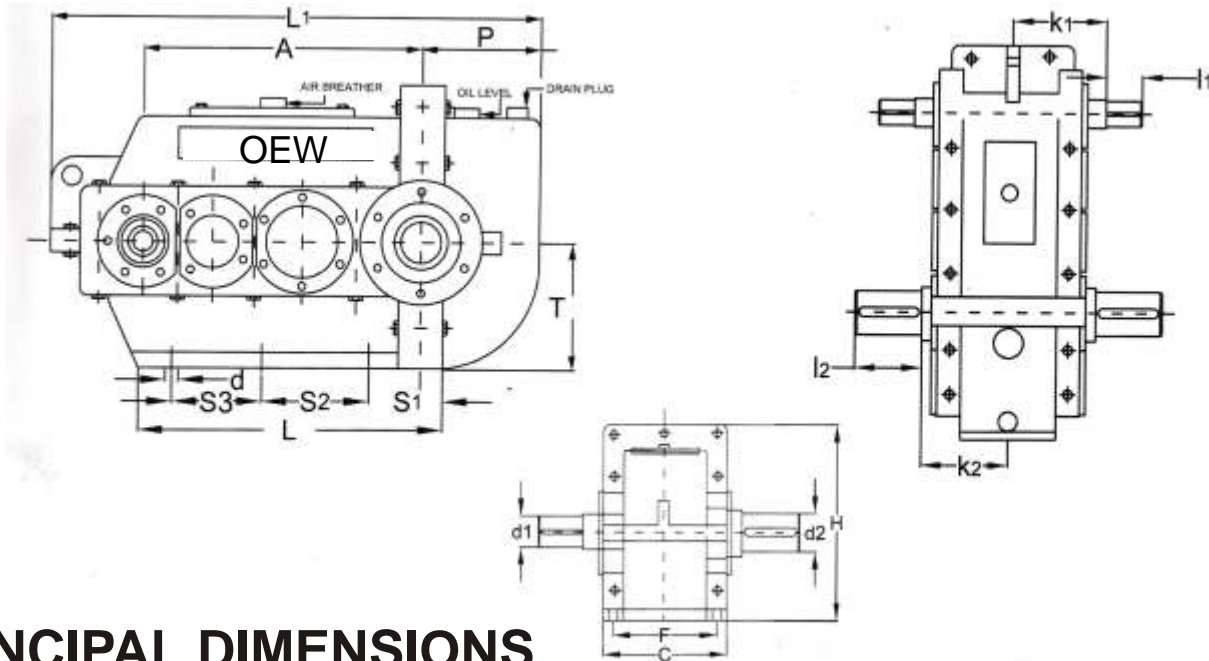


Nominal Power Rating In HP of Crane Duty Single Stage Gear Box

VR-280										VR-320								VR-350								
RPM	960				720				RPM	960				720				RPM	960				720			
DUTY RATIO	I	II	III	IV	I	II	III	IV	DUTY RATIO	I	II	III	IV	I	II	III	IV	DUTY RATIO	I	II	III	IV	I	II	III	IV
14.85	5.8	4.2	3.4	2.5	4.5	3.2	2.7	1.9	14.26	7	5	3.9	3	5.7	4	3.3	2.5	10.69	10.7	7.5	5.9	4.7	9.2	6.4	5.1	4
20.62	4.7	3.4	2.8	2	3.6	2.6	2.1	1.5	17	5.9	4.2	3.3	2.5	4.8	3.4	2.7	2	14.67	8.1	5.7	4.5	3.6	6.9	4.8	3.8	3
24	4	2.9	2.4	1.7	3.1	2.2	1.8	1.3	25.28	4	2.8	2.2	1.7	3.2	2.2	1.8	1.4	30.56	4.1	2.9	2.3	1.8	3.4	2.4	1.9	1.5
33.4	3.4	2.1	2	1.5	2.6	1.9	1.5	1.1	52.36	1.9	1.4	1	0.8	1.5	1	0.9	0.7	49.49	2.6	1.8	1.4	1.1	2.2	1.5	1.2	1

VR-400										VR-475							
RPM	960				720				RPM	960				720			
DUTY RATIO	I	II	III	IV	I	II	III	IV	DUTY RATIO	I	II	III	IV	I	II	III	IV
15.95	18.8	13.2	10.3	8.3	16.6	11.6	9.1	7.3	19.68	19.3	13.5	10.6	8.5	17.2	12.1	9.5	7.8
21	16.7	11.7	9.2	7.3	14.1	9.9	7.8	6.2	29.06	16.4	11.5	9	7.2	14.4	10.1	7.9	6.3
41.23	9	6.3	5	4	7.5	5.3	4.1	3.3	52.92	10.8	7.6	5.9	4.8	9.2	6.4	5.1	4
85.39	4.4	3.1	2.4	1.9	3.6	2.5	2	1.6	109.61	5.6	3.9	3.1	2.5	4.7	3.3	2.6	2.1

VR-550										VR-600							
RPM	960				720				RPM	960				720			
DUTY RATIO	I	II	III	IV	I	II	III	IV	DUTY RATIO	I	II	III	IV	I	II	III	IV
17.72	35.1	24.7	19.3	15.4	31.9	22.5	17.5	14	17.74	35.1	24.7	19.3	15.4	31.9	22.5	17.5	14
32.90	25.6	18	14.1	11.3	21.6	15.2	11.9	9.5	32.93	25.6	18	14.1	11.3	21.6	15.2	11.9	9.5
68.28	12.9	9.1	7.1	5.7	10.8	7.6	5.9	4.8	68.02	12.9	9.1	7.1	5.7	10.8	7.6	5.9	4.8
126.78	7.1	5	3.9	3.1	5.9	4.2	3.2	2.6	126.29	7.1	5	3.9	3.1	5.9	4.2	3.2	2.6



PRINCIPAL DIMENSIONS

SIZE	HOUSING DIMENSION							FOUNDATION HOLE DETAILS							Weight (approx.)	
	VR	A	L	C	H	h	L1	P	T	S1	S2	S3	F	d		K
280	280	240	176	272	130	483	113	128	50	-	140	140	14	20	4	118
320	320	270	190	295	140	543	123	138	60	-	150	150	17	20	4	152
350	350	280	225	320	150	595	135	148	60	-	160	185	17	20	4	175
400	400	330	230	376	178	680	170	174	45	110	120	188	17	20	6	185
475	475	482	270	475	225	785	205	-	50	80	200	215	17	25	8	222
550	550	560	285	488	235	880	215	230	50	70	320	245	17	30	8	270
600	600	625	350	570	250	975	240	-	50	70	375	305	17	35	8	340

SIZE	SHAFT					
VR	d_1	l_1	k_1	d_2	l_2	k_2
280	24	50	110	40	55	115
320	28	65	120	48	70	125
350	28	65	140	48	70	145
400	30	70	145	55	90	150
475	38	105	160	65	105	175
550	38	105	195	80	105	187
600	38	105	210	80	120	215

- ✦ We reserve our right to change any dimension without prior notice.
- ✦ All dimension are in mm unless otherwise stated.
- ✦ Permissible deviations from the transmission ratio $\pm 3\%$