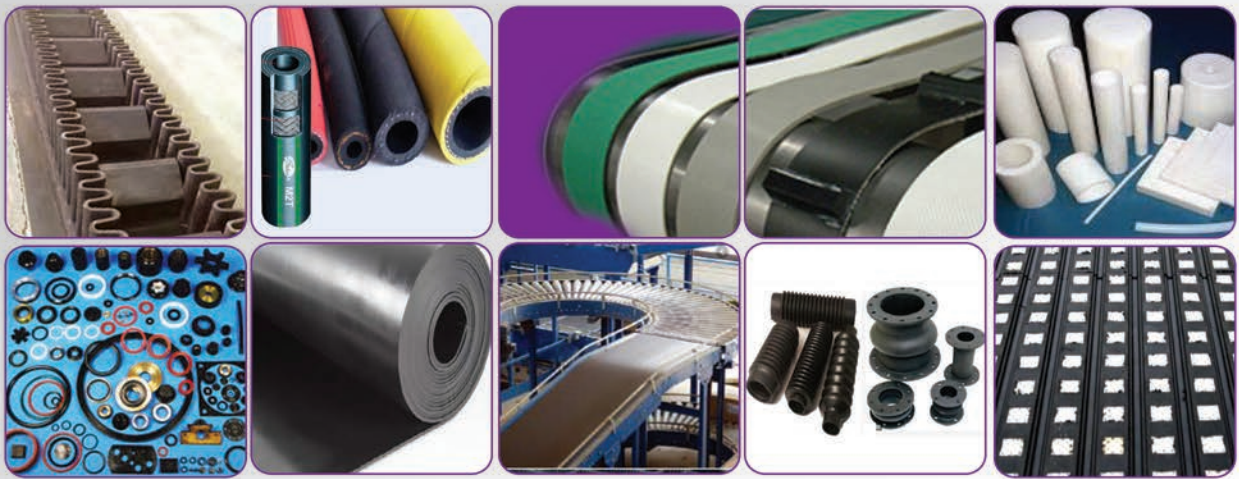




# International Rubber Industries

ALL TYPES OF RUBBER AND POLYMER PRODUCTS



[www.internationalrubberindustries.com](http://www.internationalrubberindustries.com)





WELCOME to

## INTERNATIONAL RUBBER INDUSTRIES

Established in 1986, International Rubber Industries caters to the needs of various industries throughout India and overseas for various industrial rubber and polymer products. The sectors being served include Cement Plants, Refractories, Steel Plants, Thermal Power Stations, Cable Industries, Wagon Industries, Tyre Industries, Fertilizer Industries, Aluminium Industries, Ceramics Industries, Textile Industries, Plywood Industries and other core Industries. Our products range from Various Belts, Hoses, Sheets, Wheels, Bellows, Molding spares and several other calendared & extruded products, among others. Over the years, we have developed several import substitutes. Our products are compliant with Indian & International specifications like BIS, BS, DIN, SAE, etc.



## INTERNATIONAL RUBBER INDUSTRIES

<b>Address:</b> 133 Canning Street, Chopra House, Kolkata 700001	<b>E-Mail:</b> <a href="mailto:international.rubber800@gmail.com">international.rubber800@gmail.com</a> <a href="mailto:piyush_parekh@hotmail.com">piyush_parekh@hotmail.com</a>	<b>Phone:</b> +91 33 4601-4286/ 2243-7660 <b>Mobile:</b> +91 9339077920/ 8582884539
---	--	--

### LIST OF PRODUCTS

#### 1. CONVEYOR BELTS

- a) **Rubber Conveyor Belts/Bucket Elevator Belts** to IS 1891 Part-I, II, III, IV, V (Grade M24 & N17, T1 & T2, UHR Gr., OHR Gr. & Hygienic Gr.) – with various fabric reinforcements
- b) Rubber Conveyor Belts of **Heat Resistant Grade** (Up to 120°C Temp.) & **Super Heat Resistant Grade** (Up to 180°C Temp.) and **Ultra Heat** (220°C Temp.) to IS 1891/ Part-II & UHR Gr
- c) Corrugated Edged, Box Type Flexowell, Pin Top, Chevron Top, Plus Top, Polyflight, Rough-Top Cleated Conveyor Belts- **For Material Handling**
- d) **Endless Conveyor Belts** for Drum Sanding & Wide Belt Sanding Machines of Plywood Industries
- e) Stepped Plies/Reverse Stepped Plies/Sub-Merged Ash Conveyor Belts
- f) **PVC Conveyor Belts**
- g) **Oil Resistant Wrapper** Conveyor Belts for Steel Melting Shops & Cold Rolling Mills/ Steel Plants
- h) **Ribbed Designed, Y Designed, Telescope Designed** Conveyor Belts
- i) **Oil & Heat Resistant** Grade Conveyor Belts

#### 2. POWER TRANSMISSION & DRIVING BELTS

- a) **Polyflex** Belts
- b) **HTD** Belts
- c) **Timing** Belts
- d) **Varispeed** Belts
- e) V Cum Flat Guided **Endless Belts**
- f) **Poly V Belts** In J, L & M Section
- g) Continuous **V Belts** In M, A, B, C & D & E Section
- h) **Wedge Space Saver V Belts & Space Saver** Banded V Belts in 3V, 5V, 8V & SPZ, SPA, SPB, SPC & Delta Section
- i) **Round Chord** Belts
- j) Rubberized Chord **Flat Endless Belts**
- k) Nylon Plies & Chord Reinforced stretch-less **Caterpillar Cable Extruder Flat Belts** for Horizontal Paper Laper M/C., For PVC Extruder, For Copper Screening M/C., For Drum Twister, For CCV Line Capstan M/C
- l) **Nylon/Nylon, Nylon/Leather** Sandwich Belts, Spindle Tape. Rubber Aprons & Synthetic Rubber Coats for Textile & Spinning Mills & For Paper Industries

#### 3. HOSES

- A) **LOW PRESSURE RUBBER HOSES (DISCHARGE/DELIVERY SIDE)**
  - a) Water Hoses to **IS 444/80**
  - b) **Air/Pneumatic/Rock Drill** Hoses to IS 446/80



- c) **Welding Hoses** to IS 447/80
- d) **Super Spray Hoses** to IS 1677/Type 3A
- e) **Steam Hoses** to BS 924/65 (5.1 Kg/Cm<sup>2</sup> Working Pressure)
- f) **Shot Blast/Sand Blast Hoses** to IS 5894
- g) **Diluted Chemical & Acid Hoses** to IS 7654
- h) **Boiler Wash-Out Hoses** to IS 5821 & IS 5957
- i) **Brewery Hoses** to BS 5118
- j) **Petrol – Diesel Fuel Hoses** to IS 2396
- k) **Silicon Rubber Hoses** for High Temperature Resistance
- l) Hoses for **Aircraft Fueling & Defueling** (BIS 5797-BS358)
- m) **Oil & Solvent Hoses** to IS 635
- n) **Hygienic Hoses** for Food Products
- o) **Radiator Hoses** to IS 2765
- p) Cable Coolant & Furnace Coolant **Carbon Free Hoses – Kink proof** (With & Without Asbestos Covering) for Foundries
- q) Concentrated **Acid Handling Hoses**
- B) SUCTION LINE RUBBER HOSES (WIRE- EMBEDDED/REINFORCED)**
  - a) **Water Suction & Discharge Hoses** to IS 2482 (Light Duty), to IS 3549 (Heavy Duty) & to IS 2410 (Fire Fighting)
  - b) Hoses For abrasive **Sand Slurry & Heavy-Duty** Material Handling
  - c) Hoses for **Chemicals & Acid-Suction** (Corrosive- Dilute/Concentrated)
  - d) Hoses for **Petrol Suction-Discharge**, For Road & Rail Tankers - To IS 8189, IS 10733 & BS 1435
  - e) Hoses for **Cement Grouting** to IS 6166 & IS 5137 & For Sand & Graveling
  - f) Hoses of All Special Quality for Any Specific Usages to customers' requirements
  - g) Hoses for **Saline Sea Water and Dredging Hose** for Dredgers
- C) MEDIUM PRESSURE HIGH PRESSURE & SUPER HIGH-PRESSURE HOSES FOR HYDRAULIC LINES**
  - a) Hose to SAE 100R6 & R3 (**Rayon Braided- Medium Pressure**)
  - b) Hoses to SAE 100R1, R2 & R17 (**Steel Wire Braided – High Pressure**)
  - c) Hoses to SAE 100R9 – R10-R13 & To DIN20023 (4SP & 4SH) for **Super High Pressure**
  - d) Hoses for Steam – **High Pressure & Steel Wire Braided** (Steam Pressure 150 LBS & 200 LBS & 200°C Temp & Beyond)
  - e) Stainless Steel Annular **Corrugated Flexible Bellow Hoses** with S.S. Wire Braiding to AISI 304 & 321 316 & 316L
- D) HOSES & ASSEMBLIES FOR EARTH MOVING EQUIPMENT**  
**Hoses & Assemblies to Part Numbers** for Dozers, Dumpers, Pay-Loaders, Shovels, Excavators, Oil-Engines, Scrappers, Diesel Locomotive, SAN LOCOMOTIVES, Forklifts

#### 4. SEALS, SEAL KITS FOR VARIOUS HEAVY EARTH MOVING EQUIPMENT & FORKLIFTS

#### 5. SOLID RUBBER WHEELS (PLAIN & NON-SKID TYPERS)

- a) **Solid Rubber Wheels Molded on Mild Steel Bands** & Non-Pneumatic Self-Resilient Cushion Bear cat' Type Wheels for Material Handling Equipment– For Godrej Forklifts, For Voltas Forklifts, For M & M Forklifts, For Swaraj Forklift & Other Forklifts
- b) Wheel & Tyre Assys. for **Josts' Jumbo Platform Trucks**

c) Solid Rubber Wheels for **Furnace Chargers & Manipulators**

**6. SPARES/ COMPONENTS**

Made of Teflon (PTFE), Nylon(N6/N66), PP, HDPE, LDPPE, Polyurethane, Viton, Silicone, Hypalon, EPDM, Butyl, Neoprene, Nitrile & Natural Rubber

**7. SEALING GASKETS, BUCKETS, CHEVRON PACKING, 'O' RINGS, BUFFERS, DIAPHRAGMS, BUSHES, PADS, OIL SEALS, BELLOWS, CHANNELS, TUBES, CHORDS**

**8. RUBBER SHEETS OF ALL TYPES**

Gasket Sheets, Insertion Sheets, Electrical Chequered Sheets - ISI Marked, Neoprene Sheets, Nitrile Sheets, Viton Sheets & Silicon Sheets, Teflon Sheets, Nylon Sheets, Poly-Propylene Sheets, UHMW Sheets.

- 
1. ALL TYPES OF RUBBER PANELS/LINERS FOR DAP PLANTS
  2. ALL TYPES OF DESIGNED RUBBER CONVEYOR BELTS
  3. ALL TYPES OF HEAVY DUTY FLEXIBLE RUBBER HOSES FOR VARIOUS APPLICATIONS
  4. ALL TYPES OF RUBBER EXPANSION JOINTS, BELLOWS AND FLEXIBLE CONNECTORS
  5. ALL TYPES OF RUBBER SHEETINGS AND SKIRT BOARDS
  6. ALL TYPES OF MOULDED AND EXTRUDED RUBBER PARTS TO CUSTOMERS' SPECIFICATIONS/ DRAWINGS/ SKETCHES/SAMPLES.

M. O. C.

Teflon (PTFE), Nylon(N6/N66), PP, HDPE, LDPPE, Polyurethane, Viton, Silicon, Hypalon, EPDM, Butyl, Neoprene, Nitrile & Natural Rubber

# Conveyor Belts

- Rubber Conveyor Belts / Bucket Elevator Belts Confirming to BIS 1891 Part-I,II,III,IV, & V. ASTM D378 – 10, DIN 22101, BS EN 619
- Corrugated Edged, Gravimetric & Volumetric Feeder Belts, Box Type Flexowell, Pin Top, Chevron Top, Plus Top, Polyflight, Rough-Top Cleated Conveyor Belts For Material Handling.
- Endless Conveyor Belts For Drum Sanding & Wide Belt Sanding Machines of Plywood Industries.
- Stepped Plies/Reverse Stepped Plies/Sub-Merged Ash Conveyor Belts
- PVC Conveyor Belts.
  - Grades include General Purpose, Heat (120°C), Super Heat (180°C) and Ultra Heat (220°C) Resistant, Oil & Grease Resistant, FR, Food Grade & Hygienic, Chemical & Acid Resistant
  - Polymer Conveyor Belts made of PU, PTFE, PVC
  - Oil Resistant Wrapper Conveyor Belts For Steel Melting Shops & Cold Rolling Mills of Steel Plants
- Ribbed Designed, Y Designed, Telescope Designed Conveyor Belts.
- Steel chord reinforced Endless Conveyor Belt for high / very high speed applications

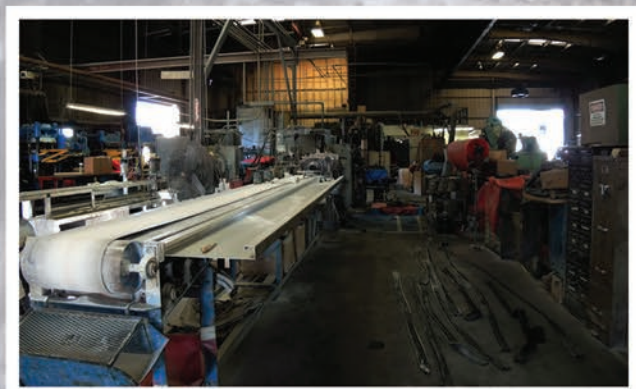




BELT TYPE	FABRIC TYPE	NO. OF PLYS	CARCASS		MAX WORKING TENSION	
			THICKNESS	WEIGHT	VULCANIZED	FASTENED
N/mm	N/mm		mm	Kg/m <sup>2</sup>	N/mm	N/mm
200/2	100	2	21	2.5	20	16
250/2	125	2	2.3	2.7	25	20
315/2	160	2	2.9	3.5	32	26
315/3	100	3	3.3	4.0	32	26
400/2	200	2	3.1	3.7	40	32
400/3	125	3	3.6	4.3	40	32
500/2	250	2	3.3	4.0	50	40
500/3	160	3	4.5	5.4	50	40
500/4	125	4	4.9	5.9	50	40
630/3	200	3	4.8	5.8	63	50
630/4	160	4	6.1	7.3	63	50
800/3	250	3	5.1	6.1	80	64
800/4	200	4	6.5	7.8	80	64
1000/4	250	4	6.9	8.3	100	80
1000/5	200	5	8.2	9.9	100	80
1250/5	250	5	8.7	10.4	125	
1250/6	200	6	9.9	11.9	125	
1500/6	250	6	10.4	12.5	125	

#### Selection of Fabric / Plies

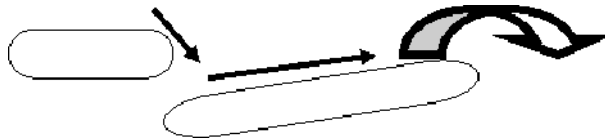
- Cotton Cotton
- Cotton / Nylon
- Nylon /Nylon
- Polyester / Nylon
- Steel Chord



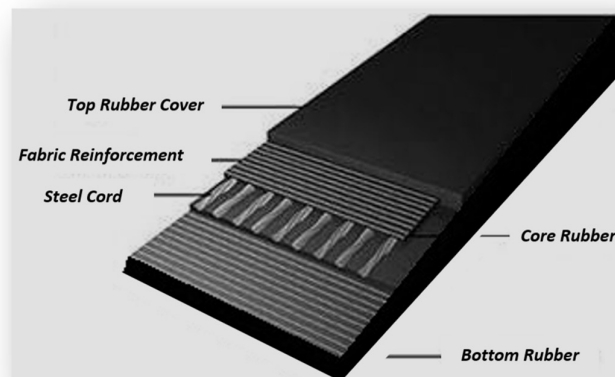
# THROWER BELTS

Thrower Belts find an application in **Bulk Handling** of materials like **Gypsum, Fly Ash, Slag** etc. Bulk material handling equipment require thrower belt with good abrasion resistance to transport the materials. The materials fall on the belt and are thrown out of the belt by centrifugal action due to speed.

Our belts are flexible with **good Abrasion Resistance, Steel Wire & Fabric Reinforced** and manufactured **Spliceless** to withstand very high running speeds (about 3000 rpm) and extreme conditions of use.



Our belts can be **Fully Customized** in terms of Length, Width and Carcass Construction: Weft with 2 Fabric Plies + 2 Metallic Wefts, or 1 Metallic Warp + 2 Metallic Wefts



The rubber used is Abrasive Resistant (High abrasive Index), Oil & Grease Resistant, and Fire Resistant

Benefits of using Thrower Belts:

- High Impact Resistance
- Flexibility in Length
- Transversal Rigidity
- Manufactured Spliceless & Endless for high speeds



# POWER TRANSMISSION & DRIVING BELTS



- 1) Polyflex Belts.
- 2) HTD Belts.
- 3) Timing Belts.
- 4) Varispeed Belts.
- 5) V cum Flat Guided Endless Belts.
- 6) Poly V Belts In J, L & M Section.
- 7) Continuous V Belts In M, A, B, C & D & E Section.
- 8) Wedge Space Saver V Belts & Space Saver Banded V Belts In 3V, 5V, 8V, SPZ, SPA, SPB, SPC & Delta Section.
- 9) Round Chord Belts.
- 10) Rubberised Chord Flat Endless Belts.
- 11) Nylon Plies & Chord Reinforced Stretchless Caterpillar Cable Extruder Belts for Horzl. Paper Laper M/C., For PVC Extruder, For Copper Screening M/C., For Drum Twister, For CCV Line Capstan M/C.
- 12) Nylon Sandwich Belts, Spindle Tapes, Rubber Aprons and Synthetic Rubber Coats for Textile & Spinning Mills for Paper Industries



# HOSES

## ■ LOW PRESSURE RUBBER HOSES (DISCHARGE / DELIVERY SIDE)



- 1) Water Hoses To BIS 444/80
- 2) Air/Pneumatic/Rock Drill Hoses To BIS 446/80
- 3) Welding Hoses To BIS 447/80
- 4) Shot Blast/Sand Blast Hoses To BIS 5894
- 5) Diluted Chemical & Acid Hoses To BIS 7654
- 6) Boiler Wash-Out Hoses To BIS 5821 & BIS 5957
- 7) Brewery Hoses To BS 5118
- 8) Petrol – Diesel Fuel Hoses To BIS 2396
- 9) Silicon Rubber Hoses For High Temperature Resistance
- 10) Hoses For Aircraft Fueling & Defueling (BIS 5797-BS 358)
- 11) Oil & Solvent Hoses To BIS 635
- 12) Hygienic Hoses For Food Products
- 13) Radiator Hoses To BIS 2765
- 14) Cable Coolant & Furnace Coolant Carbon Free Hoses – Kink proof  
(With & Without Asbestos Covering) for Foundries
- 15) Concentrated Acid Handling Hoses



# HOSES

- MEDIUM PRESSURE, HIGH PRESSURE & SUPER HIGH PRESSURE HOSES FOR HYDRAULIC APPLICATIONS



- 1) Hose To SAE 100 R6 & R3 (Rayon Braided - Medium Pressure).
- 2) Hoses to SAE 100R1, R2 and R17 (Steel Wire Braided- High Pressure)
- 3) Hoses to SAE 100R9 – R10 – R13 and to DIN20023 (4 SP & 4 SH) for Super High Pressure
- 4) Hoses For Steam – High Pressure & Steel Wire Braided  
(Steam Pressure 150 LBS & 200 LBS & 200°C Temp & Beyond)
- 5) Stainless Steel Annular Corrugated Flexible Bellow Hoses  
With S.S. Wire Braiding To AISI 304 & 321 316 & 316L.

# HOSES

## ■ HOSES & ASSEMBLIES FOR EARTH MOVING EQUIPMENTS

Hoses & Assys. to Part Numbers For Dozers, Dumpers, Pay-Loaders, Shovels, Excavators, Oil-Engines, Scrappers, Diesel Locomotive, SAN LOCOMOTIVES, Forklifts.





# HOSES

## ■ SUCTION LINE RUBBER HOSES (WIRE EMBEDDED / REINFORCED)



- 1) Water Suction & Discharge Hoses to BIS 2482 (Light Duty), To BIS 3549 (Heavy Duty) & To BIS 2410
- 2) Hose For Abrasive Sand Slurry & Heavy Duty Material Handling.
- 3) Hoses For Chemicals & Acid-Suction Line (Corrosive Resistant - Dilute / Concentrated).
- 4) Hoses For Petrol Suction-Discharge, For Road & Rail Tankers -To BIS 8189, BIS 10733 & BS 1435.
- 5) Hoses For Cement Grouting To BIS 6166 & BIS 5137 & For Sand & Graveling.
- 6) Hoses For Special Applications and for Specific Usage customized basis customer's requirement / specifications.
- 7) Hoses For Saline Sea Water and Dredging Hose for Dredgers.

# Sealing Gaskets, Buckets, Chevron Packing, 'O' Rings, Buffers, Diaphragms, Bushes, Pads, Oil Seals, Bellows, Channels, Tubes, Chords

01



02



03



04



05



06





**SEALS, SEAL KITS to Part Numbers For Dozers, Dumpers,  
Pay-Loaders, Shovels, Excavators, Oil-Engines,  
Scrappers, Diesel Locomotive, SAN LOCOMOTIVES,  
Forklifts.**



# SOLID RUBBER TYRES

(PLAIN & NON SKID TYPES)

i) Solid Rubber Wheels Molded on Mild Steel Bands.

Cushion Bearcat Type Non-Pneumatic, Self-Resilient Tyres for Forklifts and Material Handling equipment – For Godrej Forklifts, For Voltas Forklifts, For M & M Forklifts, For Swaraj Forklift & Other Forklifts.

ii) Wheel & Tyre Assys. For Josts' Jumbo Platform Trucks

iii) Solid Rubber Tyres For Furnace Chargers & Manipulators.





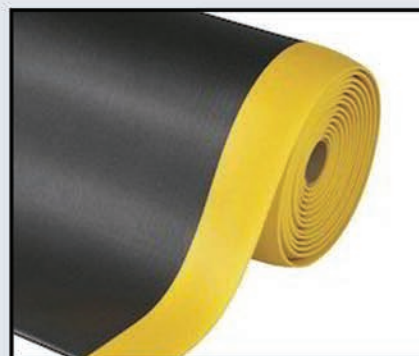
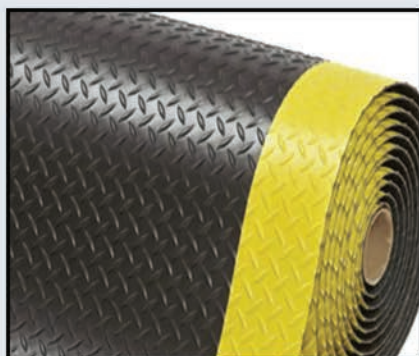
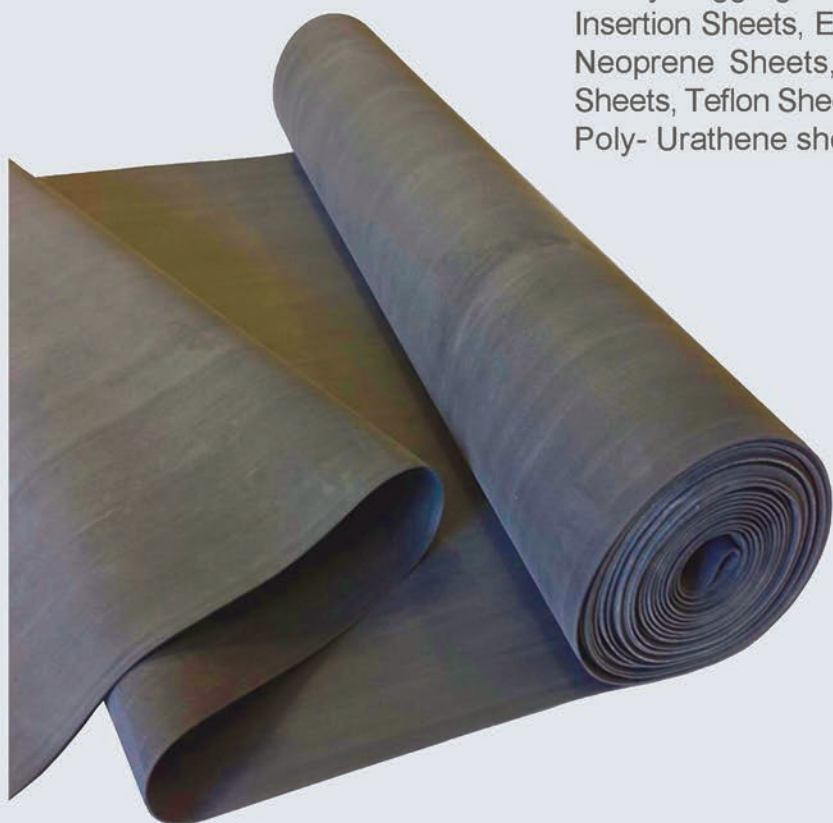
# SPARES/ COMPONENTS

Teflon (PTFE), Nylon (N6/ N66), PP, HDPE, LDPPE, Polyurethane, Viton, Silicone, Hypalone, EPDM, Butyle, Neoprene, Nitrile & Natural Rubber :



# RUBBER SHEETS OF ALL TYPES

Pulley Lagging Sheets, Ceramic Sheets, Gasket Sheets, Insertion Sheets, Electrical Chequered Sheets - BIS Marked, Neoprene Sheets, Nitryle Sheets, Viton Sheets & Silicon Sheets, Teflon Sheets, Nylon Sheets, Poly-Propylene Sheets, Poly- Urathene sheets, UHMW Sheets.





# VARIOUS BELLOWS

## Rubber Bellows

---



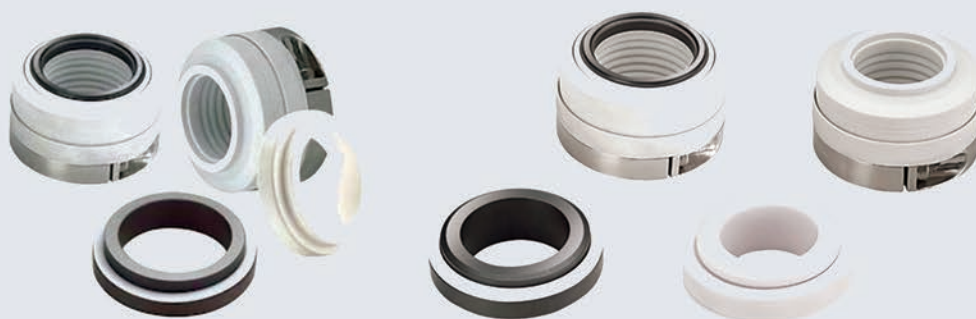
## Metallic Bellows (Stainless Steel)

---



## Teflon Bellows

---





## **INTERNATIONAL RUBBER INDUSTRIES**

**Address :**

133, Canning Street , 3<sup>rd</sup> Floor, Chopra House,  
Kolkata - 700001, West Bengal , India

**Phone :**

033-46014286/ 033 22437660

**Mobile :**

+91 9339077920/ 8582884539

**E-mail :**

piyush\_parekh@hotmail.com  
international.rubber800@gmail.com

**Website :**

[www.internationalrubberindustries.com](http://www.internationalrubberindustries.com)