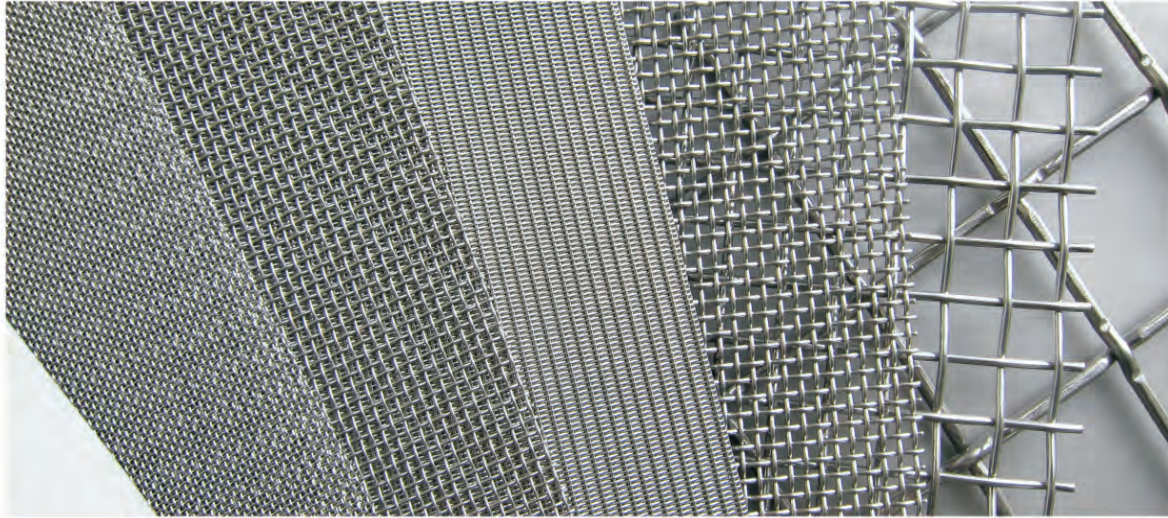




مؤسسة منصور الجعويني  
MANSOUR AL JAWINI EST.



#### Mansour Al Jawini Establishment

Location: Villa No. 11, Fathima Al Zahra Street,  
Ishaq Al Tajer Street, Al Jareer District, Malaz Area.  
Post Box 90072, Riyadh 11613, Kingdom of Saudi Arabia  
Tel: +966 11 478 7478 / 479 2894, Fax: +966 11 477 4398  
[www.aljawini.net](http://www.aljawini.net) [www.aljawniest.net](http://www.aljawniest.net)  
[haq@aljawini.net](mailto:haq@aljawini.net)  
Mobile: 00966506279904



# Stainless Steel Perforated Metal Mesh

Stainless steel Perforated metal mesh is the most durable and solid type among all materials of Perforated metal sheet. Though the cost is expensive, but the long service life and chemical stability performance is worthy for that.

Stainless steel perforated metal sheet can be used as decorative Perforated metal mesh, it can also be used as Perforated metal filter element for gas, liquid and solid filtration.

## Specification:

Materials: stainless steel 304, 316, 316 L.

Hole Type: Round hole, square hole, hexagonal hole, Slotted hole, decorative hole.

Species: small, medium and heavy galvanizing steel Perforated metal mesh

Thickness: 0.018" - 0.315".

Hole Size: 0.02" - 1.0".

Percent Open Area: 10% - 67%.

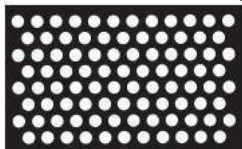
Width: 36", 40", 48", 60".

Length: 60", 78", 82", 96", 120", 150".

Perforation mode: Straight, 45°, 60° staggered pattern.

Reprocessing: Bending, rolling, welding, cutting or specified by customers.

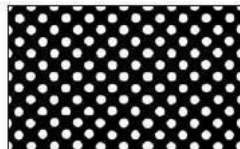
Surface treatment: polishing, etc.



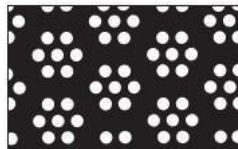
Round 60 degree staggered pitch



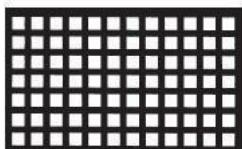
Round 90 degree pitch



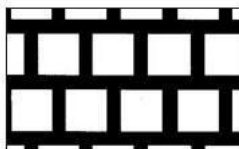
Round 45 degree pitch



Round floral pattern



Square 90 degree pitch



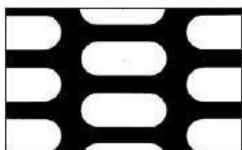
Square 60 degree staggered pitch



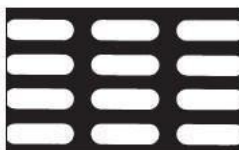
Square 45 degrees



Square Patterned



Round Ended Slotted end staggered



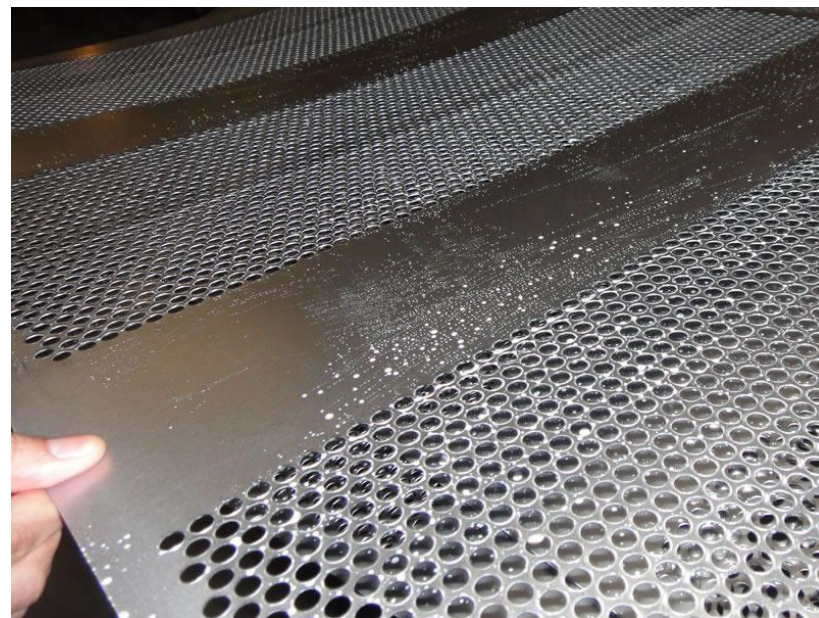
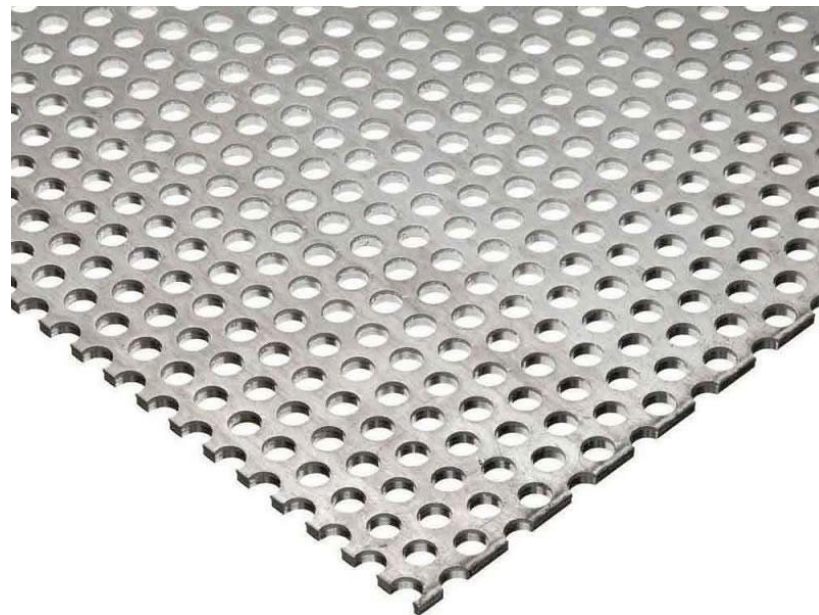
Round Ended Slotted rectangular pitch



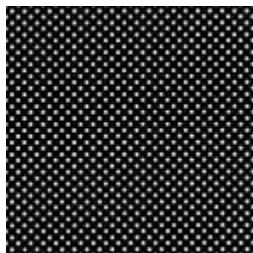
Square ended slotted side staggered



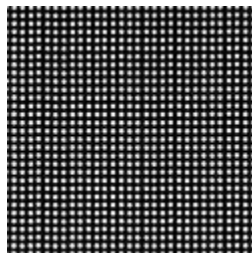
Round ended slotted side staggered at 45 degrees



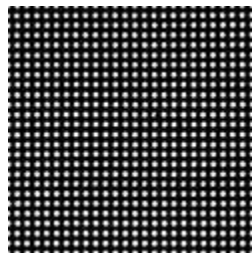




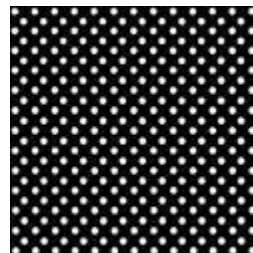
.020" dia. .043" ctrs.  
20% open area



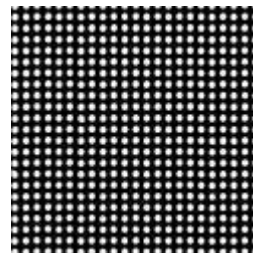
.023" dia. .042" ctrs.  
22% open area



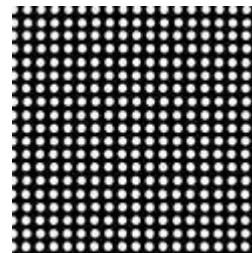
.027" dia. .050" ctrs.  
23% open area



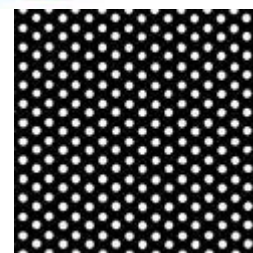
1/32" dia. 1/16" ctrs.  
23% open area



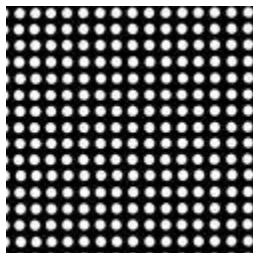
.033" dia. .055" ctrs.  
28% open area



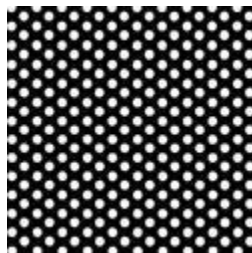
.045" dia. .066" ctrs.  
36% open area



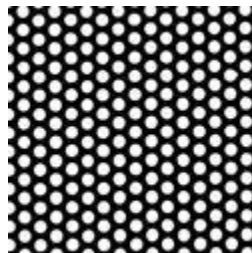
.045" dia. 5/64" ctrs.  
32% open area



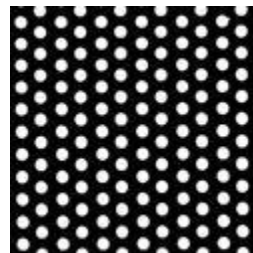
.050" dia. .083" ctrs.  
29% open area



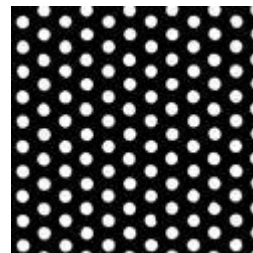
3/64" dia. 3/32" ctrs.  
23% open area



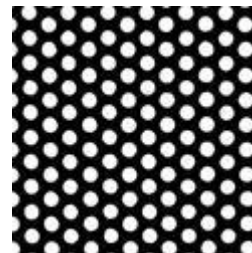
1/16" dia. 3/32" ctrs.  
41% open area



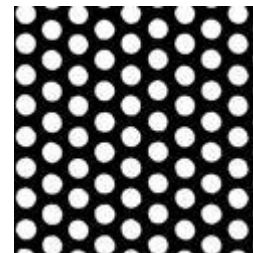
1/16" dia. 7/64" ctrs.  
27% open area



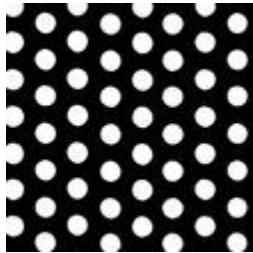
1/16" dia. 1/8" ctrs.  
23% open area



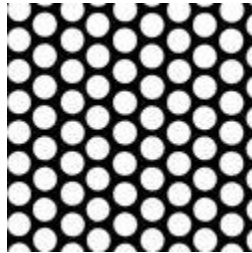
5/64" dia. 1/8" ctrs.  
36% open area



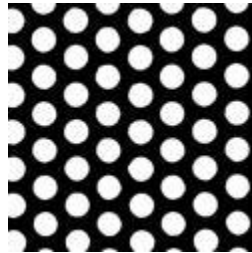
3/32" dia. 5/32" ctrs.  
33% open area



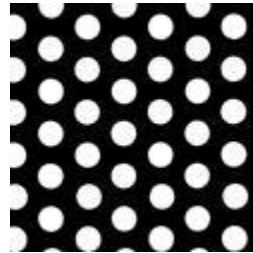
3/32" dia. 3/16" ctrs.  
23% open area



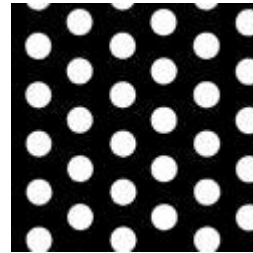
.117" dia. 5/32" ctrs.  
51% open area



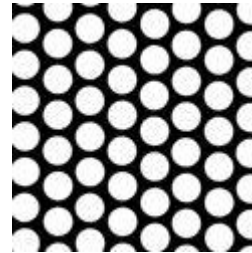
1/8" dia. 3/16" ctrs.  
40% open area



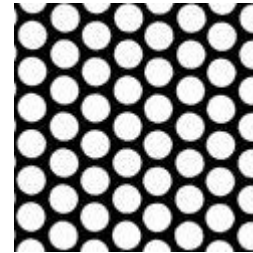
1/8" dia. 7/32" ctrs.  
30% open area



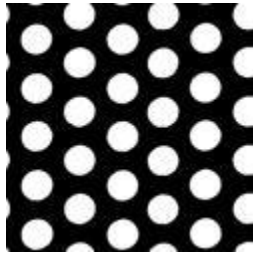
1/8" dia. 1/4" ctrs. 23%  
open area



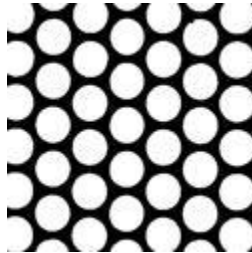
9/64" dia. 3/16" ctrs.  
51% open area



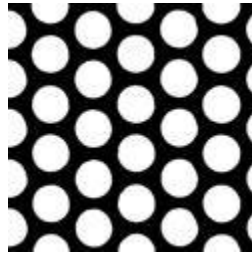
5/32" dia. 3/16" ctrs.  
63% open area



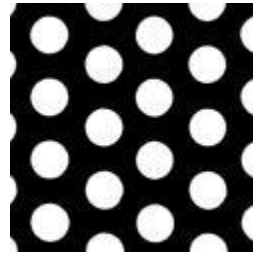
5/32" dia. 1/4" ctrs.  
34% open area



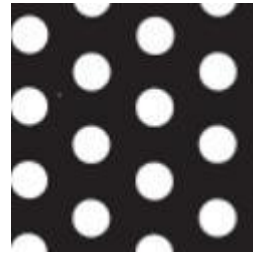
3/16" dia. 7/32" ctrs.  
67% open area



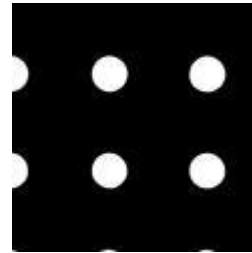
3/16" dia. 1/4" ctrs.  
50% open area



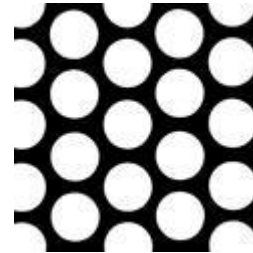
3/16" dia. 5/16" ctrs.  
32% open area



3/16" dia. 3/8" ctrs.  
23% open area



3/16" dia. 1/2" straight  
10% open area

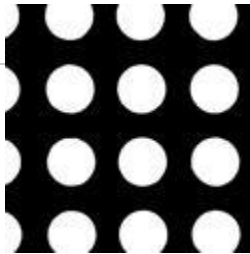


1/4" dia. 5/16" ctrs.  
58% open area

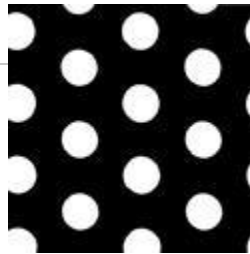




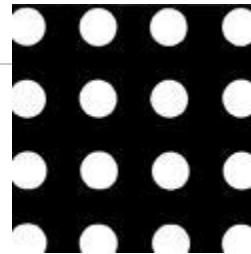
1/4" dia. 3/8" ctrs.  
42% open area



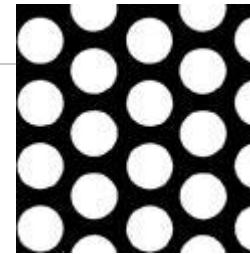
1/4" dia. 3/8" straight  
34% open area



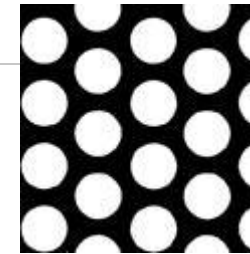
1/4" dia. 1/2" ctrs.  
23% open area



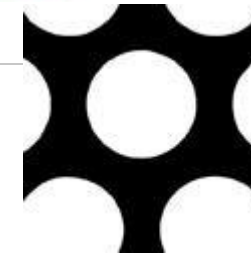
1/4" dia. 1/2" straight  
20% open area



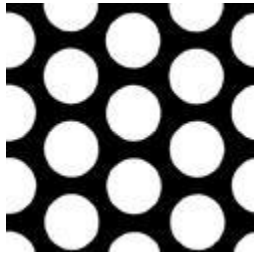
5/16" dia. 7/16" ctrs.  
46% open area



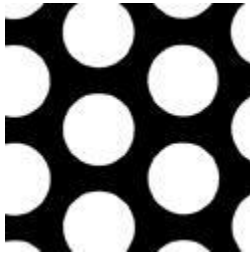
3/8" dia. 9/16" ctrs.  
40% open area



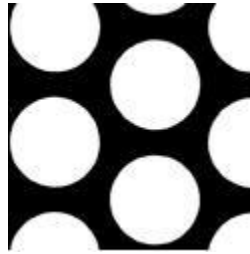
3/4" dia. 1" ctrs.  
51% open area



3/8" dia. 1/2" ctrs.  
52% open area



1/2" dia. 11/16" ctrs.  
48% open area



5/8" dia. 7/8" ctrs.  
46% open area



1" dia. 1-3/8" ctrs. 48%  
open area

**Images presented here are not actual sizes,  
they are for visual comparison only  
We also manufacture other custom size panels.  
Trade offer presented at the individual query.**



# Carbon Steel Perforated Metal



VISIT US AT  
www.aljawini.net  
www.aljawiniest.net

Steel Perforated metal mesh is made of low carbon steel sheet, which is more economical and cheaper than stainless steel Perforated metal mesh or aluminum Perforated metal mesh. But the steel Perforated metal mesh is easy to corrode or rust in the harsh environment. To solve this problem, the steel Perforated metal mesh are commonly treated through galvanized or PVC coated surface. The galvanized surface treatment can be divided into electric galvanized or hot dipped galvanized. The electric galvanized steel Perforated metal is much cheaper than the hot dipped galvanized steel Perforated mesh sheet, but the service life is not so as the electric dipped galvanized Perforated metal mesh.

## Specification:

Materials: low carbon steel sheet.

Hole Type: Round hole, square hole, hexagonal hole, Slotted hole, decorative hole.

Species: small, medium and heavy galvanizing steel Perforated metal mesh

Thickness: 0.018" - 0.375".

Hole Size: 0.02" - 1.0".

Percent Open Area: 10% - 67%.

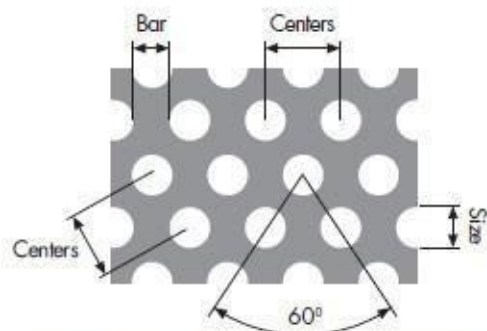
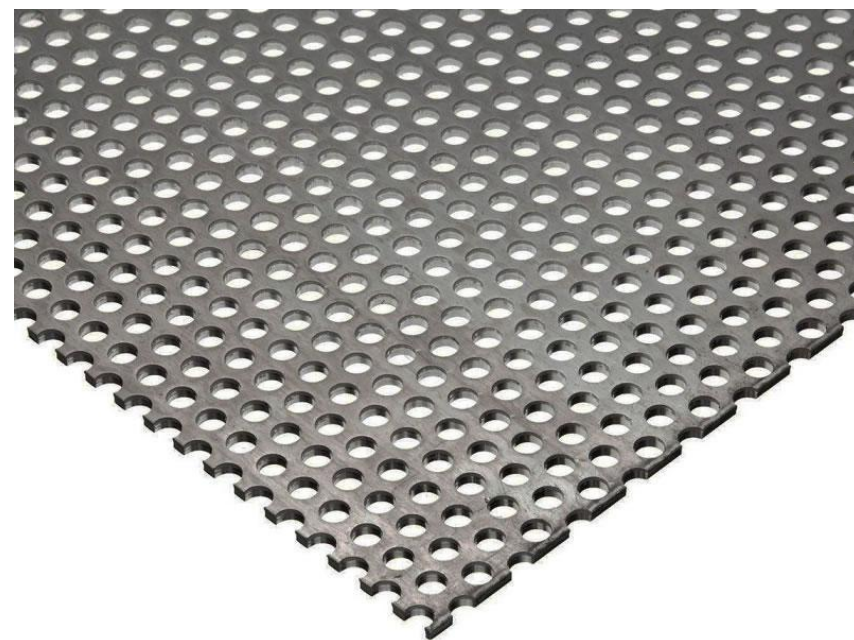
Width: 36", 40", 48", 60".

Length: 60", 78", 82", 96", 120", 150".

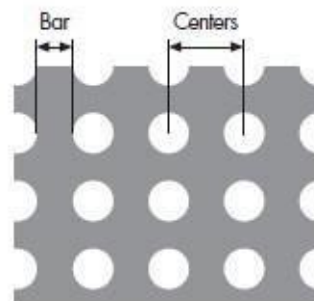
Perforation mode: Straight, 45°, 60° staggered pattern.

Reprocessing: Bending, rolling, welding, cutting or specified by customers. Surface treatment: dipping galvanized or PVC coated..

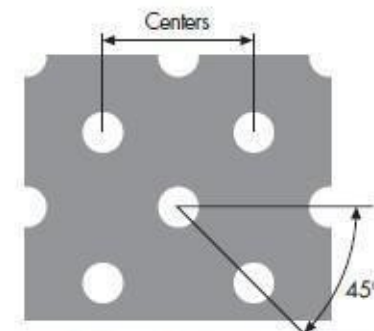
Sheet color: green, golden, pink, black and any other colors you want.



**STANDARD ROUND PERFORATIONS  
60° STAGGERED**



**STRAIGHT LINE ROUND  
PERFORATIONS**



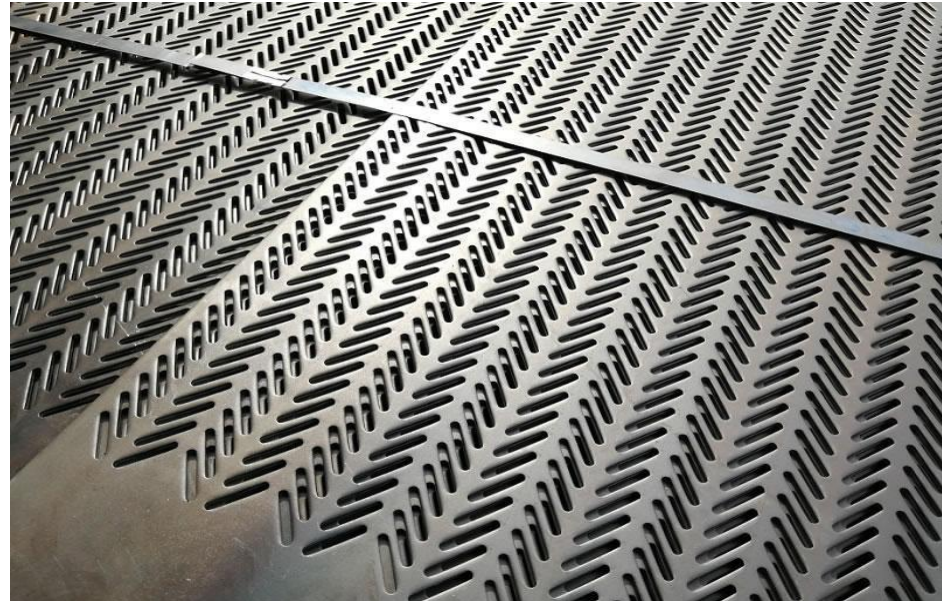
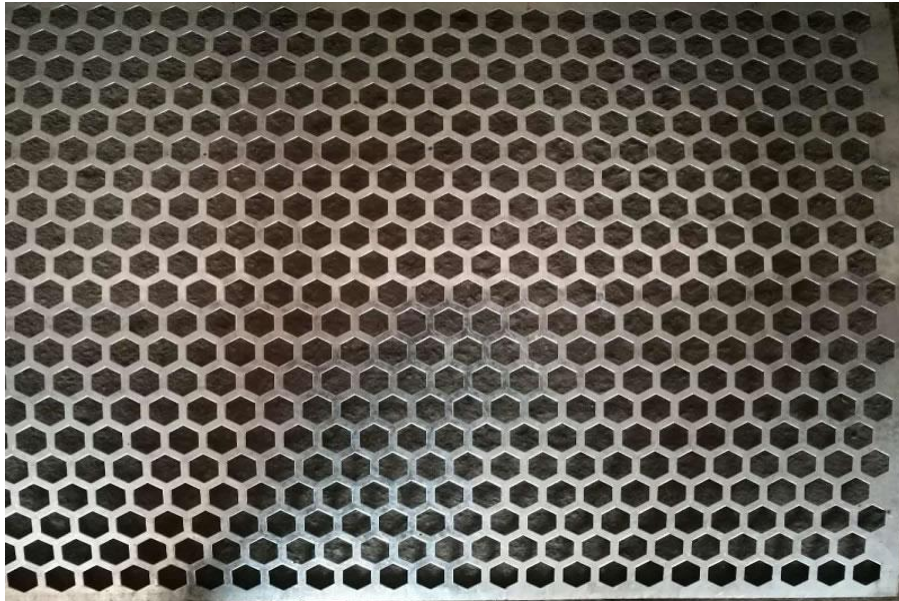
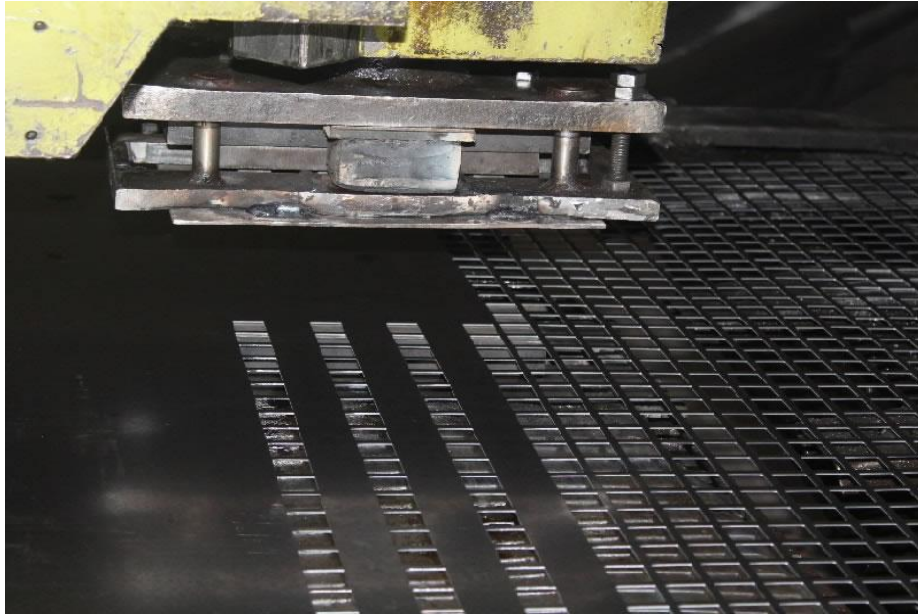
**OPTIONAL ROUND PERFORATIONS  
45° STAGGERED**



# Carbon Steel Perforated Metal



VISIT US AT  
[www.aljawini.net](http://www.aljawini.net)  
[www.aljawiniest.net](http://www.aljawiniest.net)





# Galvanized Steel Perforated Metal Mesh



VISIT US AT  
[www.aljawini.net](http://www.aljawini.net)  
[www.aljawiniest.net](http://www.aljawiniest.net)

In ordinary low carbon steel plate surface coated with a layer of metal zinc, is to prevent the steel plate surface from corrosion and prolong the service life

## **Specification:**

Materials: low carbon steel sheet or galvanized Steel sheet.

Classification: cold galvanizing, hot galvanizing

Hole Type: Round hole, square hole, hexagonal hole, Slotted hole, decorative hole.

Species: small, medium and heavy galvanizing steel Perforated metal mesh

Thickness: 0.018" - 0.375".

Hole Size: 0.02" - 1.0".

Percent Open Area: 10% - 67%.

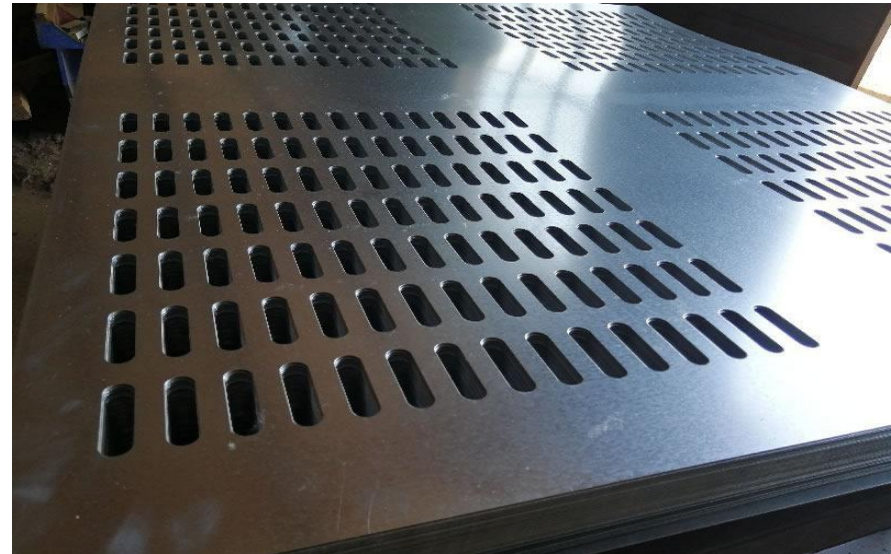
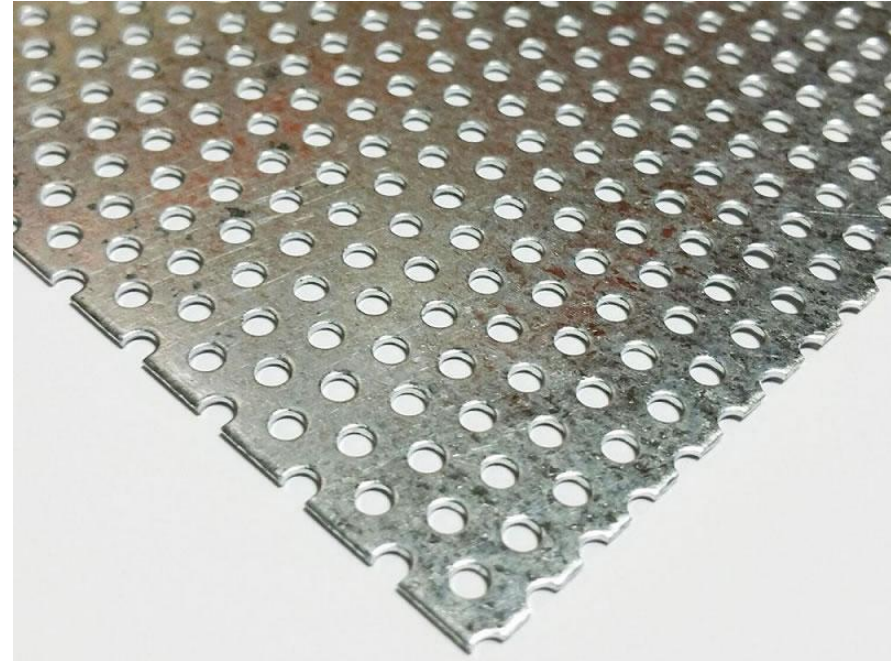
Width: 36", 40", 48", 60".

Length: 60", 78", 82", 96", 120", 150".

Perforation mode: Straight, 45°, 60° staggered pattern.

Reprocessing: Bending, rolling, welding, cutting or specified by customers. Surface

treatment: galvanized, powder coated, painted.





# Aluminum Perforated Metal Mesh



VISIT US AT  
[www.aljawini.net](http://www.aljawini.net)  
[www.aljawiniest.net](http://www.aljawiniest.net)

Aluminum Perforated metal mesh is much more lightweight than the steel Perforated metal mesh and stainless steel Perforated metal mesh. Aluminum Perforated metal sheet has outstanding corrosion and rust resistance, which can be used in the salty, high temperature and other harsh environments. Aluminum Perforated metal mesh is available in various colors through PVC coated surface treatment for better corrosion resistance performance. Additionally, it can be used in much more applications to let the environment more beautiful and high class.

## Specification:

Materials: Aluminum 1060, Aluminum alloy 3003, 5005, etc.

Hole Type: Round hole, square hole, hexagonal hole, Slotted hole, decorative hole.

Species: small, medium and heavy aluminum Perforated metal mesh

Thickness: 0.018" - 0.5"

Hole Size: 0.02" - 1.0"

Percent Open Area: 10% - 67%.

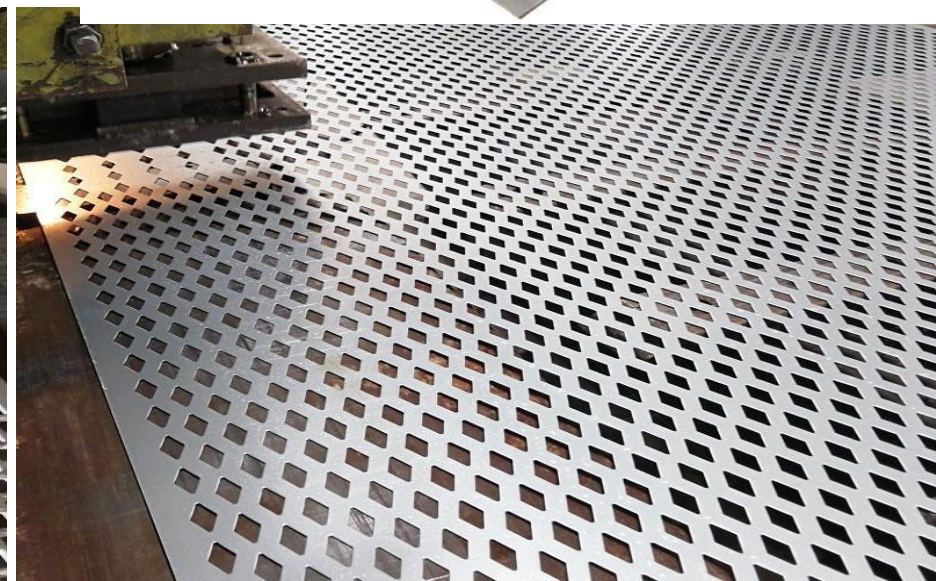
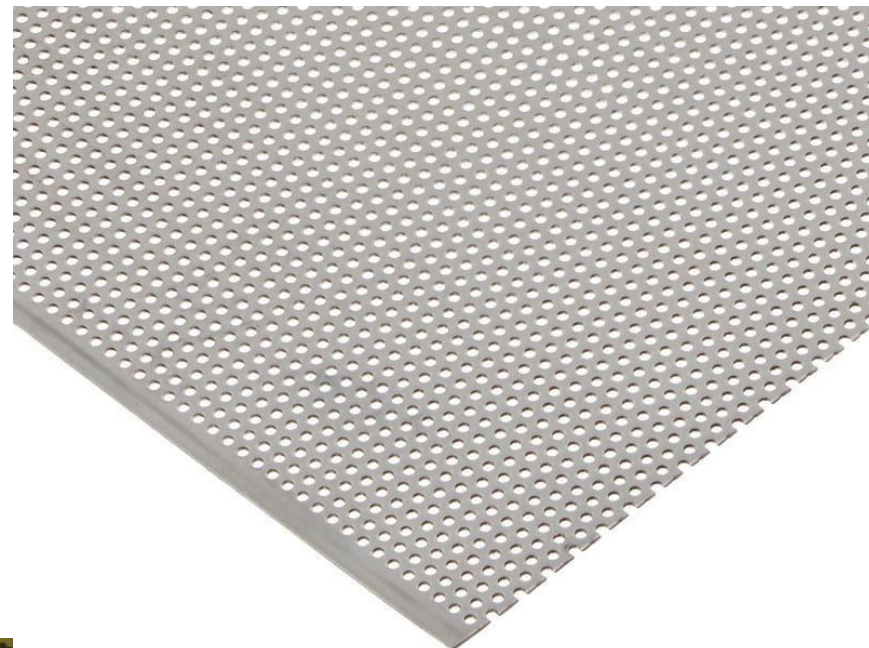
Width: 36", 40", 48", 60".

Length: 60", 78", 82", 96", 120", 150".

Perforation mode: Straight, 45°, 60° staggered pattern.

Reprocessing: Bending, rolling, welding, cutting or specified by customers. Surface

treatment: powder coated, painted, etc.





# Decorative Perforated Metal



VISIT US AT  
[www.aljawini.net](http://www.aljawini.net)  
[www.aljawiniest.net](http://www.aljawiniest.net)

TGM manufacture more than Dozens decorative patterns – please see the gallery below. Bespoke decorative patterns are available.

Perforated patterns are available in one-hole size or with a variety of different hole sizes and shapes. Bespoke patterns and pitches are designed to individual customer's requests.

Materials: Mild Steel, Aluminium, Stainless Steel, Galvased Steel, Corten, Brass, Copper, Zinc, Titanium, Certain Plastics upon Request.

Surface treatment: powder coated, painted, galvanising and anodising etc.

Feature:

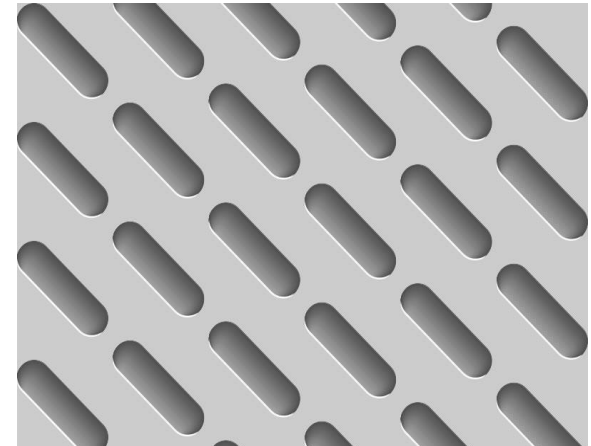
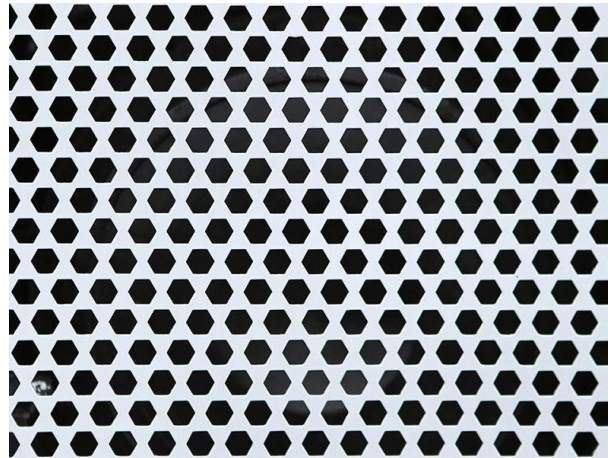
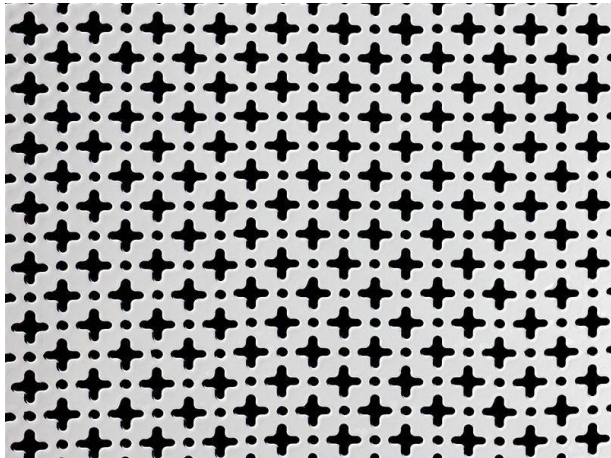
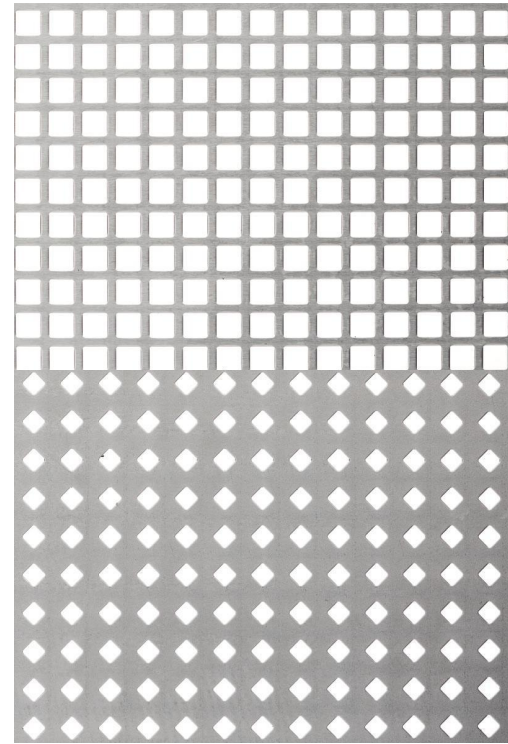
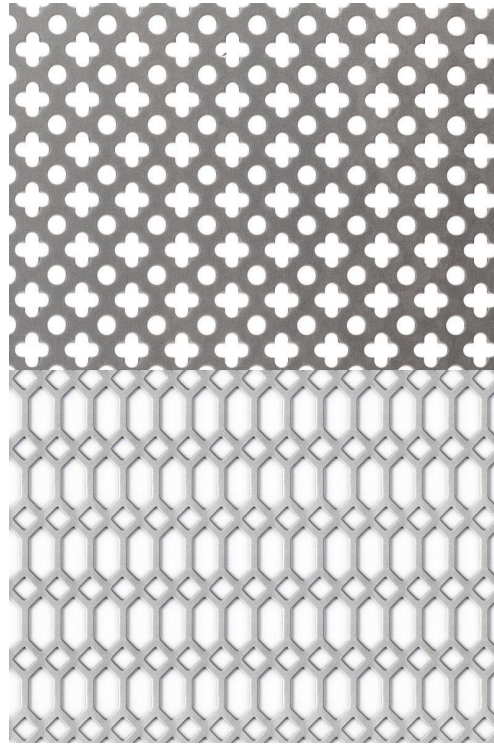
High security with fireproof and explosion proof. Good ventilation and light transmission performance.

The structure helps to eliminate noise and reduce echo, create a good atmosphere for living.

Environmental protection, reduce energy consumption, the materials in the production process is lossless, saving costs.

Simple and beautiful appearance, in harmony with the surrounding environment.

Durable with longer lifespan.

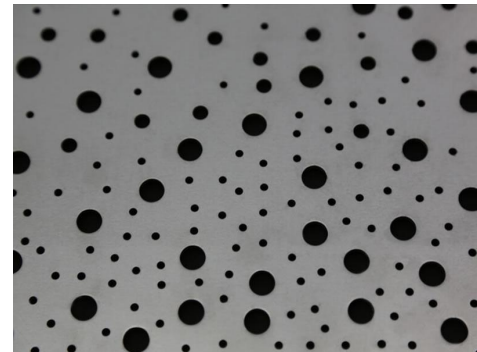
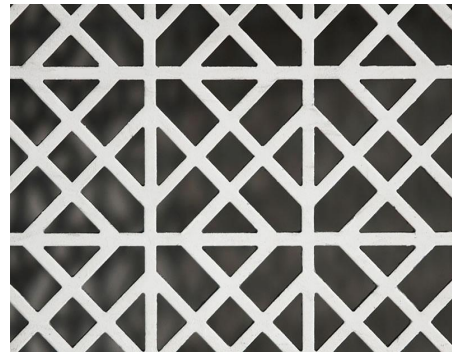
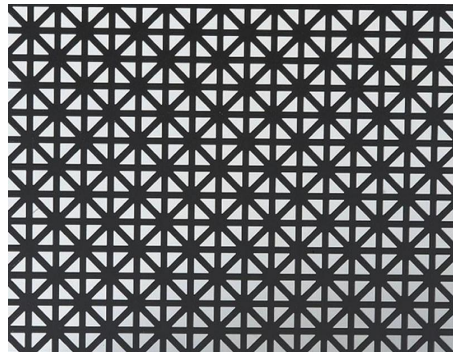
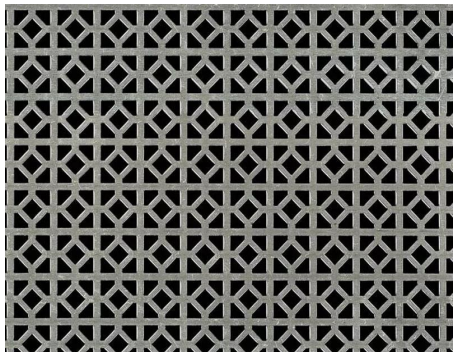
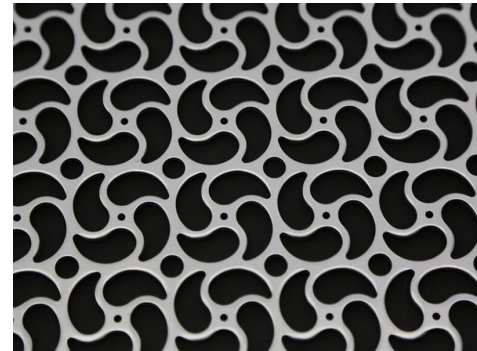
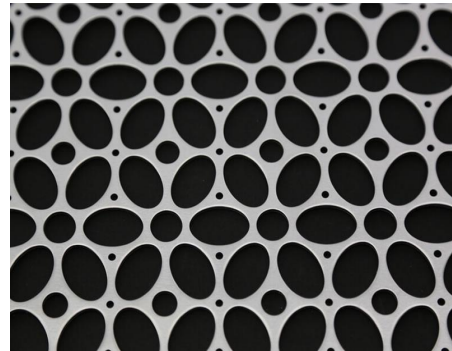
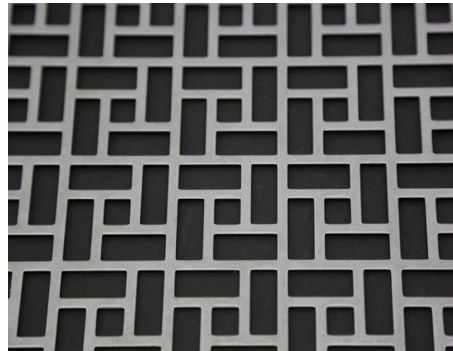
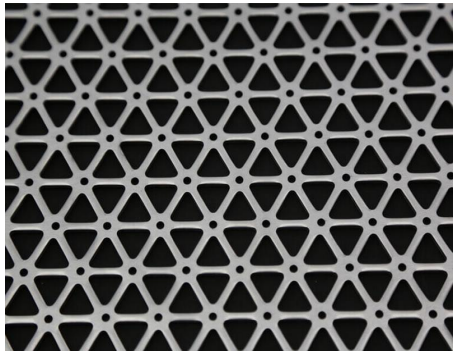
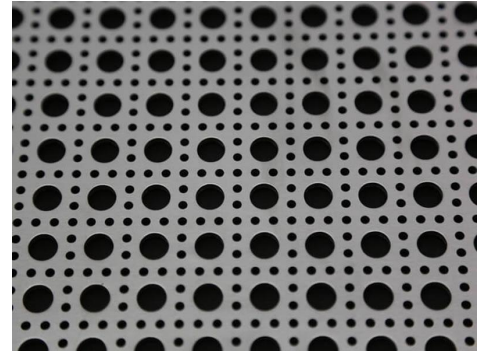
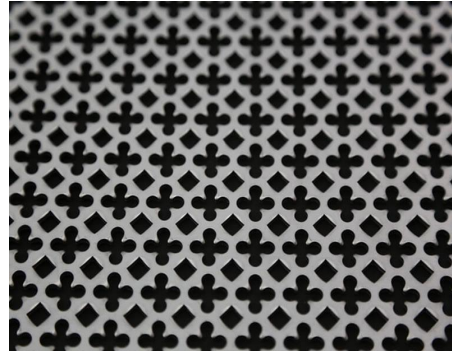
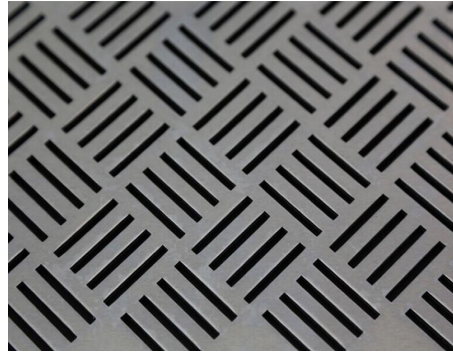
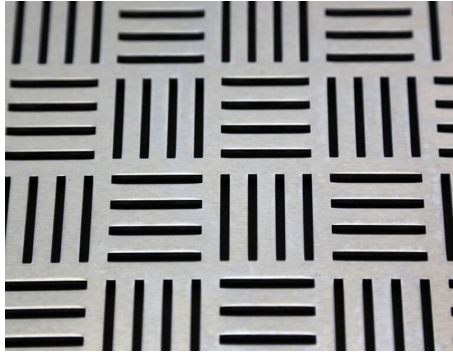




# Decorative Perforated Metal



VISIT US AT  
[www.aljawini.net](http://www.aljawini.net)  
[www.aljawiniest.net](http://www.aljawiniest.net)





# Decorative Perforated Metal



VISIT US AT  
[www.aljawini.net](http://www.aljawini.net)  
[www.aljawiniest.net](http://www.aljawiniest.net)

We offer the top range of Perforated Metal Mesh for our valued clients. These products are used in many fields in the market. All our products are manufactured using premium quality raw material and modern machinery that obtained from the reliable manufacturers of the market. Apart from this, we offer the facility of customization to customers as per their needs.

## Application:

### Thin perforated plates

Railways, public works equipment and agricultural machinery: interior fitouts, air vents, running boards, footstools ..

Equipment and industrial processes: wood industry, paper, foundry, chemical / petrochemical, food industry...

Energy and electrical: Solar panel holders, racks, lighting, sound, heating... Environment: sorting, waste crushing, water treatment, acoustics...

Building industry: railings, suspended ceilings, partitions walls, floors, protection, closings...

### Thicker perforated plates

Equipment and industrial processes: food industry (trommel screens, filter press...)

Environment: waste crushing (wood industry, pneumatics...), washer plate, sorting...

Railways, public works equipment and agricultural machinery: interior trim, air vents, running boards, footstools...

Building industry: suspended ceilings, partitions walls, floors

