

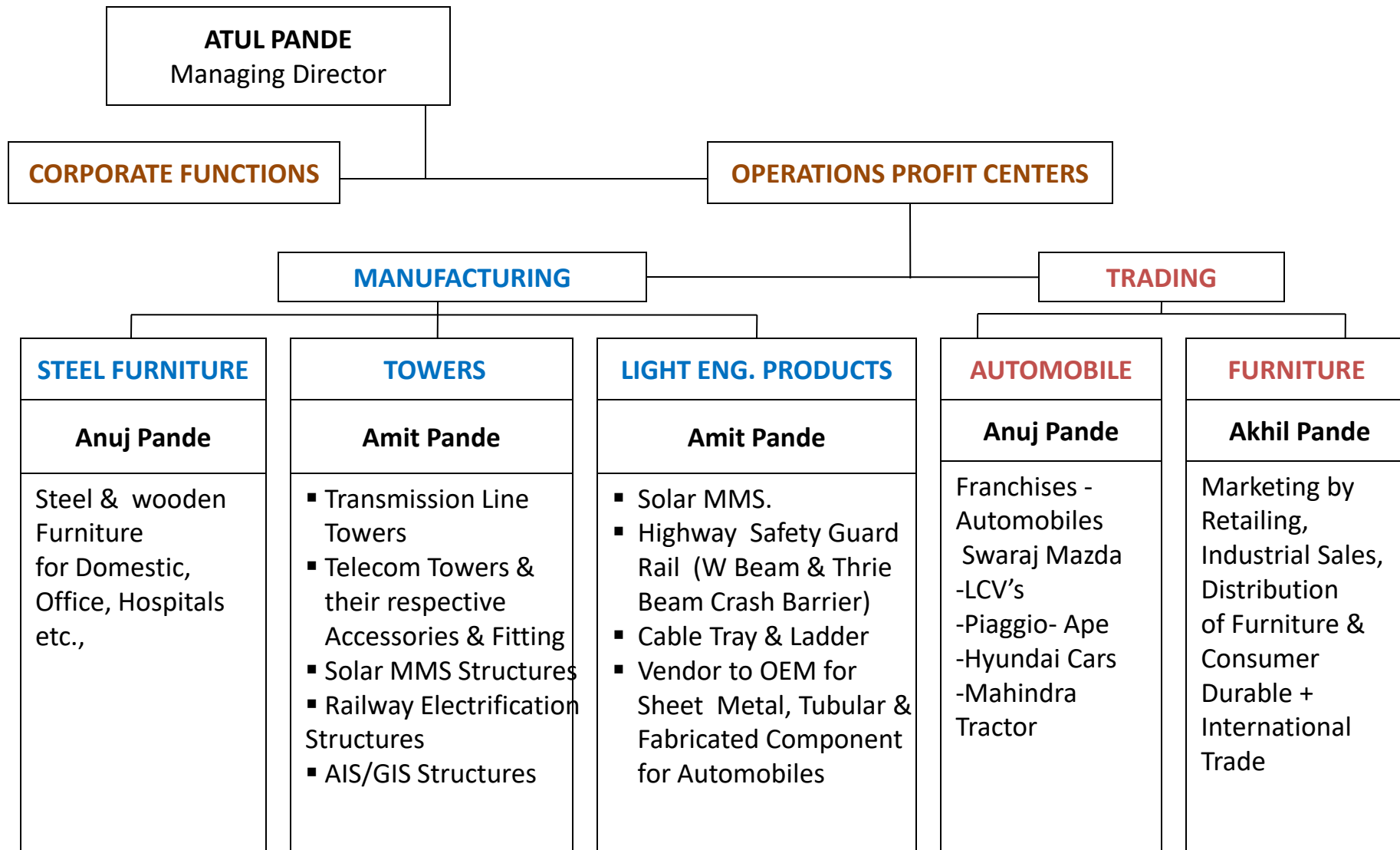
# Since 1925



**Pandesons – Family business  
founded by Late  
Mr. M B Pande (1891 - 1953)**

Later on, **Mr. N. P. Pande** pioneered Steel Furniture Industry in Central India & founded *Eros* Group about 60 years ago. With inherent strengths stemming from infrastructure of a competent Light Engineering Unit - diversified successfully as OEM to Automobile Industry & then as TLT – Tower Manufacturer . Also associated with leading International names in Automobile - as franchisee for *Hyundai Cars & Swaraj Mazda LCVs*. And have the first Furniture Departmental Stores of Central India

# EROS GROUP ORGANISATION



# **DIVERSIFIED ACTIVITIES**

## **MANUFACTURING -Steel Furniture**

For Home, Office, Hospital etc.

## **MANUFACTURING –Light Engg. Products (Eros Metal Works)**

- \* Hot Dip Galvanized Cable Tray & Ladder Type Cable Tray
- Solar Structures (Module Mounting Structures)
- Highway Safety Guardrail ( W Beam & Crash Barrier)
- \* Vendor to OEM for Sheet Metal & Tubular Components

## **TRADING - Automobile Franchises**

- \* Swaraj Mazda - LCV's
- \* Hyundai Cars
- Piaggio- Ape Three Wheeler & Four Wheeler
- Mahindra & Mahindra Tractors

## **TRADING - Furniture**

- \*Furniture Department Stores with 15000 Sft Display area
- \*Retailing through Chain of Retail Stores
- \* Redistribution to Trade & direct Institutional Sales in Central India

## **MANUFACTURING – Towers (Eros Infrastructures )**

For Transmission Line Towers, Telecom Tower ,Solar Structures,Railway

# **EROS INFRASTRUCTURES PVT LTD.**

Manufacturer And Supplier of Transmission Line Towers, Substation Structures, Telecom Towers, Railway Electrification Structures, Cable Tray, W-Beam, Crash Barrier, Solar Structures, AIS/GIS Structures, Fabricator And Galvanizer

- An ISO 9001:2015 certified company
- An ISO 14001:2015 certified company
- An ISO 45000:2018 certified company

Approved by - PGCIL, BHEL, BSNL, GE T&D, L&T, CORE, RCF, GETCO, APTRANSCO, MAHATRANSCO, NTPC, TATA, STERLITE, STERLING WILSON

# BIRD'S EYE VIEW OF OUR PLANT





## PROFILE

- Private Limited company established in 2007. Commenced commercial operations in April 2007
- Existing installed capacity of 72000 MT per Annum Fabrication and Galvanizing.
- Central India's Leading Manufacturer of Towers ,Solar MMS and Hot Dip Galvanizing unit with state-of-the art machinery and tools



## Plant and Facility - General

- Located at Butibori MIDC, near Nagpur in Maharashtra.
- Total plant area of 27 acres
- Self-contained Fabrication unit (6000 MT pm) and Hot Dip Galvanizing unit (6000 MT pm)
- Latest machinery; world class processes and procedures; dedicated team of professionals

## Fabrication & Galvanizing services offered

- ☐ Transmission Line Towers
- ☐ Telecommunication Towers GBT & RTT (ANGULAR & TUBULAR)
- ☐ Sub Station Pipe/Lattice Structures
- ☐ Rural Electrification Structures
- ☐ Railway Electrification Structures
- ☐ Solar MMS structures
- ☐ Windmill Structures (Lattice Type)
- ☐ AIS/GIS – CB Structures
- ☐ Cable Tray/Cable Ladder
- ☐ Highway Safety Guard/Crash Barriers



# OUR QUALITY POLICY

## EROS INFRASTRUCTURES PVT. LTD.

Doc.No: L-1/QM/Rev 00

Issue date: 01-11-2017

Section-3

## Quality Policy

The company is committed for sustainable growth through superior products and services and remain constantly relevant in a continuously changing market scenario.

We are also committed to protect environment by minimizing impacts on air, noise pollution and depletion of resources by our activities and increasing greenery in our premises and continual improvement in environment, health & safety (ehs) performance and committed to fulfill its compliance obligations.

(Amit Pande)  
CEO & Director.

## Quality Objectives

Sno.	Elements of Quality Policy	Objectives	Quantifiable, Measurable & Verifiable objectives	
			Unit	Target
1	Growth	Increase in annual sales volume during the financial year	%	25%
2	Superior products	Customer satisfaction Index ( on a scale of 0 to 1)	%	95%
3		Process improvement for controlling internal rejection or re-gradation	%	< 0.05%
4		Process improvement for controlling external rejection	%	0%
5	Control scrap & zinc consumption electrical consumption	Reduction in Scrap over pervious year	%	0.25
		Reduction in zinc consumption over pervious year	%	0.30
6	SPM level	Suspended Particulate Matter	µg <sup>3</sup>	< 150
7	Noise pollution	Noise level to be controlled by giving ear plugs	dBA	< 85
8	Accidents	No. of accidents to controlled by using PPEs.	%	50.0
9	Greenary cover to be increased	Plant 200 trees every year	No.	100.0
10	Commitment to compliance obligations	Penalty paid for non-compliance	Rs	0.0

Reviewed by

Approved by

Two Zinc Baths of 8m length & 1M Width with 2M & 2.5Mtr Depth.



# Tanks for Pre-Treatment Process





# Galvanized Product



# Digitalized Furnace Control Panel



# Chemical Lab





# Galvanizing services meeting varied customers / needs



# SOLAR MMS MANUFACTURING

- **Solar MMS Manufacturing Capacity – 1000MT/Month**  
(Ground Based , Roof Top , Pump Structures ,Tank Structures & Parking)
- **Some of the Prestigious Customers :**
  - Tata Power Solar
  - Tata International
  - Sterling & Wilson Pvt. Ltd.
  - L&T Solar
  - Renew Solar
  - Lanco Solar
  - NTPC through Tata Power Solar & Lanco Solar
  - IOCL through Tata Power Solar
  - Cleanmax Solar
  - Vikram Solar
  - Thermax
  - WAAREE

# SOLAR PARKING SHED





# SOLAR PUMP STRUCTURE

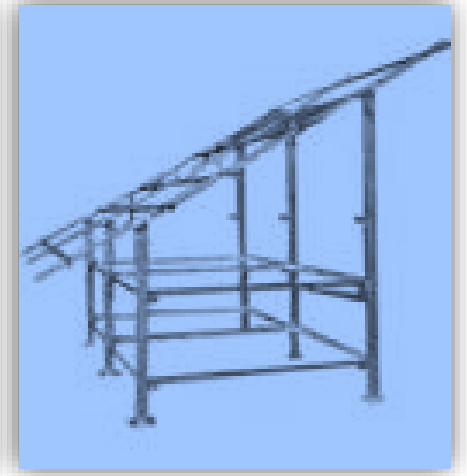




## HDG SOLAR MMS - TANK STRUCTURE



## HDG Solar MMS-Ground Based





# EROS HIGHWAY SAFETY GUARDRAIL

## EROS W Beam & THRIE Beam Crash Barrier

"Eros" manufactures a complete product line of guard rails and safety accessories. The Eros guardrail is easy to install, therefore eliminates the need for specialised labour. Eros can offer a guaranteed superior product by using its proven expertise and excellent service.

### Highway Guardrail Products

They are also known as Guide-rail or W-beam & Thrie-beam guardrail.

### Highway Guardrail Barriers

Depending upon your site requirements, guardrail barriers can be easily configured for optimal performance and cost efficient.

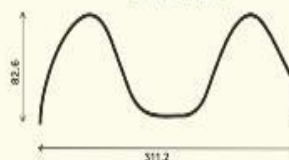
### Highway Guardrail Accessories

Highway guardrail beams: Eros can manufacture custom shop curve guardrail beams min. radii of 5 ft (1.5m) to max. 150 ft (45.7m)

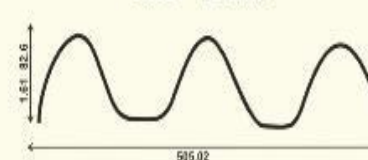
Eros guardrails are designed as per standard specification to make "ROADS SAFER"



W - Beam



Thrie - Beam



### Technical Specifications

#### W - BEAM GUARDRAIL

- Standard W-beam guardrail
- Steel Yielding Line Posts (SYLP):  
W 6' x 8'.5" x 6'0" (W150m x 13m x 1.83m)
- W-beam guardrail height : 31" (790mm)
- Post spacing : 6'3" (1.9m)
- 5/8" x 1 3/4" (16mm x 45mm)  
Countersunk head bolts
- W-beam flange protector at each post

#### THRIE - BEAM GUARDRAIL

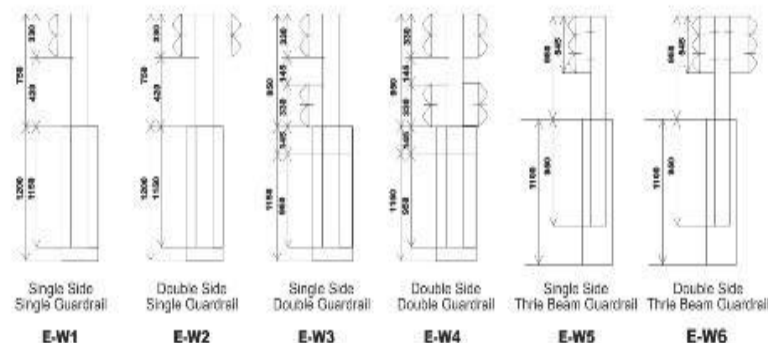
- Standard Thrie-beam guardrail
- Steel Yielding Line Posts (SYLP):  
W6' x 8'.5" x 6'0" (W150m x 13m x 1.83m)
- Thrie-beam guardrail height : 39" (990mm)
- Post spacing : 6'3" (1.9m)
- 5/8" x 1 3/4" (16mm x 45mm)  
Countersunk head bolts
- W-beam flange protector at each post

### Thrie Beam Special Features

- High level of performance especially for large vehicles
- Greater height of rail face provide reduced deflection & improved resistance to vehicle vaulting or under running

- Due to reduced dynamic deflection maintenance; it is ideal for high volume of high speed traffic
- It is better than flex beam guardrail due to it's used in transition.

### Types of Highway Guardrail



# TLT MANUFACTURING

- **TLT (TLT, Telecom, Sub-station, AIS/GIS, Railway) Manufacturing Capacity – 5000MT/Month**
- **Some of the Prestigious Customers :**
  - KEC International
  - L&T (PT &D)
  - PGCIL
  - Skipper Ltd.
  - Tata Projects Ltd
  - Karamtara
  - GE/Alstom
  - BHEL
  - Kalpataru Power Transmission Ltd.

# CNC PLATE PUNCHING AND DRILLING





# CNC ANGLE PUNCHING



# CNC ANGLE DRILLING



# PLATE SECTION





# Hydraulic Plate Shearing Machine 20mm thick x 3000mm Width



# POWER PRESS 100T, 75T AND 50T



# HEEL MILLING MACHINE



# HOLE AFTER BEND MACHINE





# ROLL FORMING MACHINE



# MECHANICAL TESTING- UTM





# MECHANICAL TESTING-IMPACT & HARDNESS



## PLANT AND FACILITY- FINISHED GOODS YARD



# PLANT AND FACILITY – RAW YARD



## OUR VALUED CUSTOMERS & REGISTRATIONS

- ✓ Power Grid Corporation Of India Ltd.
- ✓ A.P.TRANSCO
- ✓ NTPC
- ✓ MSETCL
- ✓ GETCO
- ✓ CORE
- ✓ RCF
- ✓ Bharat Heavy Electricals Ltd (BHEL)
- ✓ Larsen And Toubro (Solar & TLT)
- ✓ KEC international Ltd.
- ✓ TATA Solar and Power Ltd.
- ✓ Tata Project Ltd.
- ✓ GE T&D

- ✓ STERLITE POWER
- ✓ ASHOKA BUILDCON
- ✓ IRB INFRA
- ✓ DILIP BUILDCON
- ✓ AFCON
- ✓ HCC
- ✓ MONTECARLO
- ✓ MAHINDRA SUSTEN
- ✓ KALPATARU
- ✓ ADANI
- ✓ Local firms of micro, small and medium sizes
- ✓ BSNL
- ✓ INDUS
- ✓ GTL



# EROS PRODUCTS CAN BE FOUND IN THE FOLLOWING COUNTRIES

- ☐ CHARLEROI- USA ( GE - Live project for GIS/AIS)
- ☐ COMBODIA
- ☐ TANZANIA
- ☐ ETHIOPIA
- ☐ GHANA
- ☐ IVORY COAST
- ☐ TUNISIA
- ☐ AFGHANISTAN
- ☐ ABUDHABI
- ☐ MALI
- ☐ LIBIYA
- ☐ NEPAL

- ☐ OMAN
- ☐ COLUMBIA
- ☐ UAE
- ☐ Srilanka
- ☐ Cameroon
- ☐ Nigeria
- ☐ Bangladesh



# Contact Us

[www.erosgroup.co.in](http://www.erosgroup.co.in)

[eipl.sales@erosgroup.co.in](mailto:eipl.sales@erosgroup.co.in)

## Registered Office:

II nd floor, Gayatri sadan,  
Ghat Road,

Nagpur-440018,

Phone

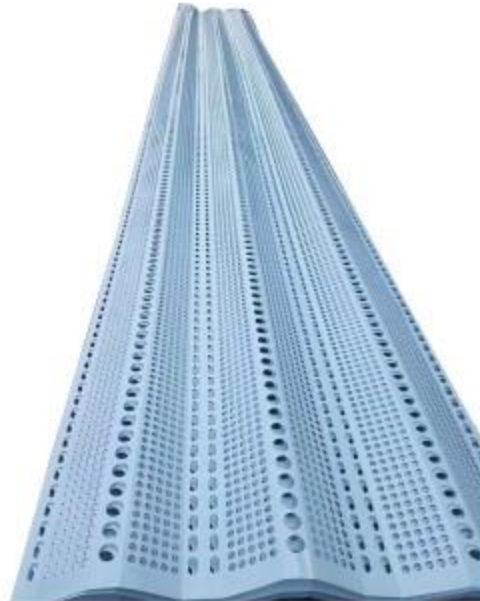
## Factory:

G-97,MIDC, Butibori,  
Nagpur-441122.

Phone - +91

+91

# WIND BREAK PANNEL AND STRUCTURE

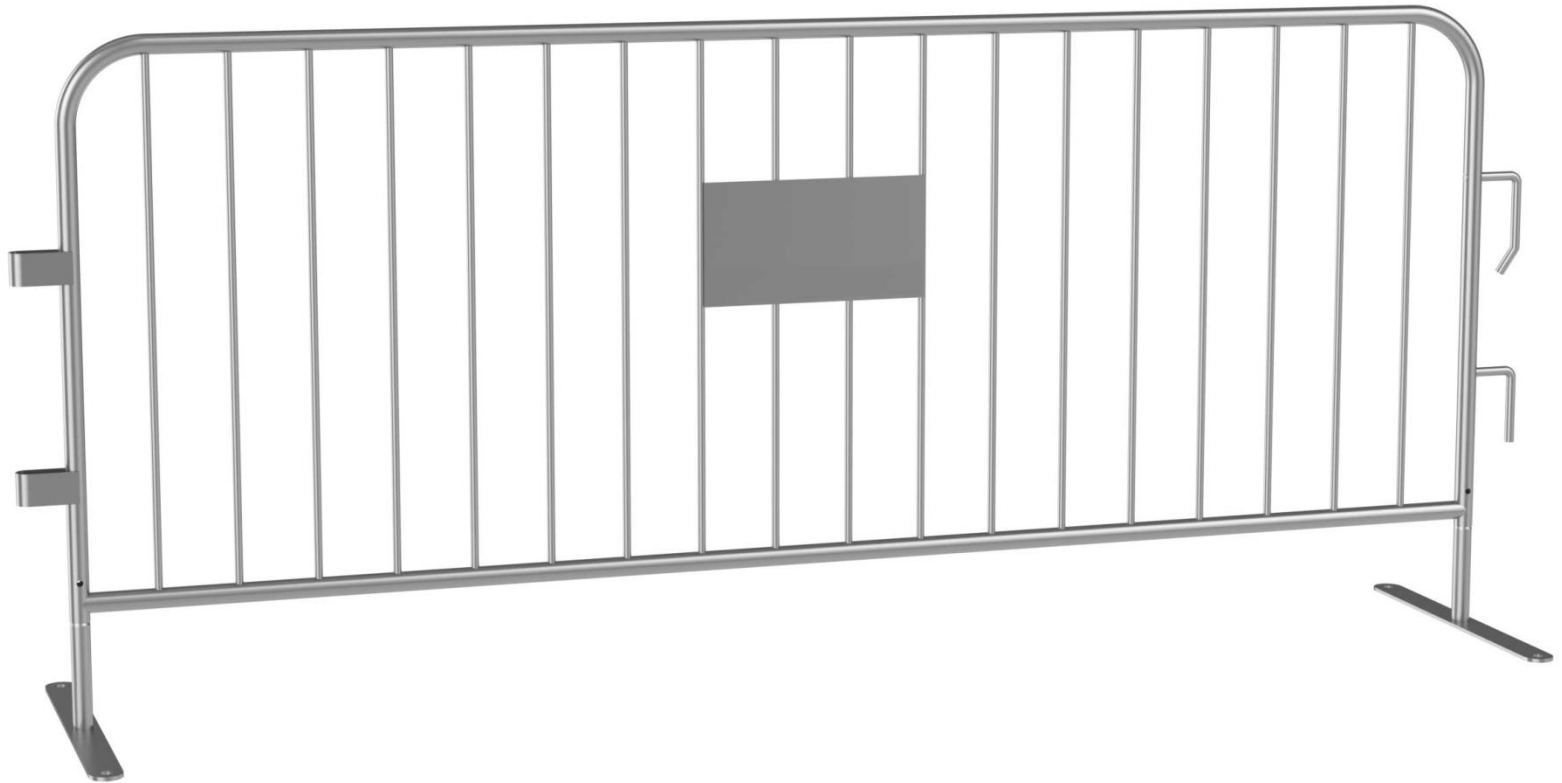




# Noise Barrier,



# Rack Barriers



# HDG H beam Sleepers





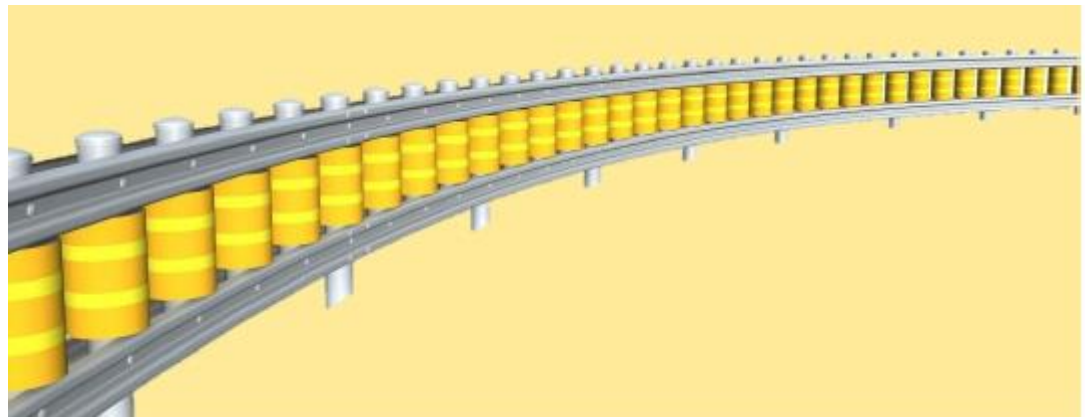
# Railway Bridges Girders



# railway electrification structures



# Steel Roller Guardrail





# Telecom tower





# Sub station structure





# AIS/GIS SUPPORT STRUCTURE

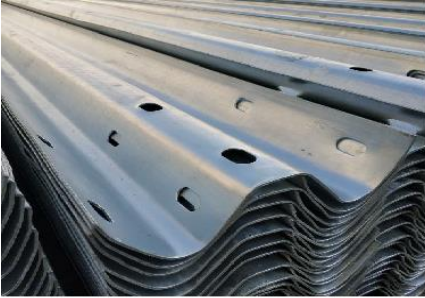




# CABLE TRAY



# w beam crash barrier



**Thank you**