

in mm	2mm	3mm	4mm	6mm	8mm	10mm	12mm
100x100x3	264	177	133	90	68	55	46
150x150x4	296	198	149	100	75	61	51
200x150x4	269	181	136	91	69	55	46
150x300x6	263	175	132	88	66	53	44
300x300x6	394	263	198	132	100	80	67
450x300x7	405	270	202	135	101	81	68
600x450x8	506	337	253	169	127	101	85
600x600x8	591	394	295	197	148	119	99
600x900x11	515	343	258	171	129	103	86
900x900x12	590	393	295	197	148	118	99



Approximate Sq. Ft. Coverage Per 5 Kg. Soso Epoxy Grout

Theoretical Coverage Calculation.  

$$\frac{(\text{Tile Length} + \text{Tile Breadth}) \times \text{Tile Thickness} \times \text{Joint Width} \times \text{Specific Gravity}^*}{(\text{Tile Length} + \text{Joint Width}) \times (\text{Tile Breadth} + \text{Joint Width})} = \text{Kg/m}^2$$
 Note: \*Specific Gravity = 1.75 All The Dimensions Are In mm

- Grout shades are approximate guides only
- Verify actual appearance and compatibility with a test area before installation commences
- Actual shades and texture will depend on job site condition
- There may be a shade variation in different batches, it is advised to mix grout from different batches to get uniform color
- Quantities shown are approximate and are given for estimating purpose only
- Actual job site coverage's may vary.
- It is always good practice when calculating coverage to allow for 10 to 15% additional material for wastage and spillage.

**Advantages**

- Stain Fast
- Color Fast
- Water Cleanable When Fresh
- Non-creaking or Powdering
- Anti-Bacterial and Anti-Fungal
- Chemical & Temperature Resistance
- Easy Maintenance
- Available in Range
- Hard & Durable Joints
- High Strength & Versatile
- Waterproof & Durable Joints

**Packing :**

1 Kg. and 5 Kg.

**Recommended For**

- Ceramic Floor & Wall Tiles ■ Quarry Tiles ■ Marble ■ Mosaics ■ Stone ■ Slate
- Porcelain Tiles / Vitrified Tiles ■ Pavers ■ Metal Tiles ■ Natural Stones
- Synthetic & Engineered Stones ■ Agglomerate Stones

Fix It Forever...

Manufactured And Marketed By:  
**SOSO CHEMICALS**  
 Near Dariyalal Resort, 8/A National Highway,  
 Jambudiya, Morbi-363642  
 Customer Care No.: +91 8866775544  
 web: www.sosochemicals.com  
 e-mail: info@sosochemicals.com

Epoxy Grout Colour Shade...



## EPOXY GROUT



01 Silver Shadow



02 Sandstone



03 Marble Beige



04 Smoke Grey



05 Natural Grey



06 Platinum



07 State Grey



08 Light Grey



09 Hamp



10 Antique White



11 Parchment



12 Sauterne



13 Ivory



14 Silk



15 Burgundy



16 Raven



17 Mocha



18 Black



19 Olive Green



20 Inca Gold



21 Jaisalmer



22 Sterine Silver



23 Sierra Sunrise



24 Quarry Red



25 Orange



26 Buff



27 Canyon Red



28 Mayan Red



29 Terracotta



30 Light Green



31 Bright White



32 Violet



33 Sky Blue



34 Blue



35 Sapphire Blue



36 Navy Blue

## GOLD



107 State Grey



108 Light Grey



113 Ivory



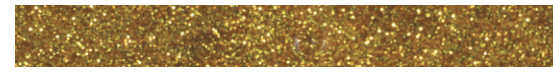
115 Burgundy



118 Black



119 Olive Green



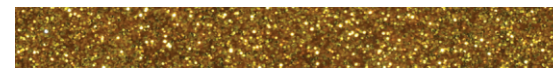
123 Sierra Sunrise



124 Quarry Red



126 Buff

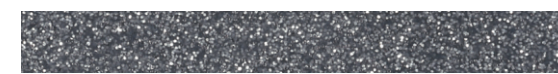


127 Canyon Red



134 Blue

## SILVER



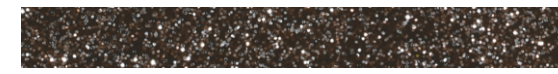
207 State Grey



208 Light Grey



213 Ivory



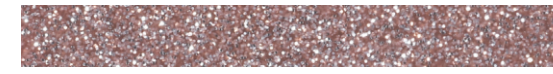
215 Burgundy



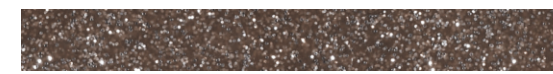
218 Black



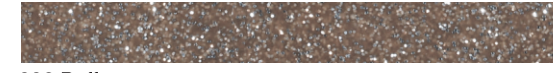
219 Olive Green



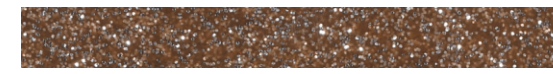
223 Sierra Sunrise



224 Quarry Red



226 Buff

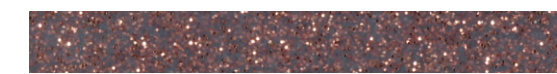


227 Canyon Red



234 Blue

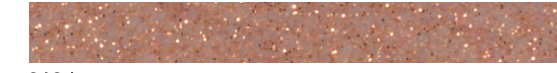
## COPPER



307 State Grey



308 Light Grey



313 Ivory



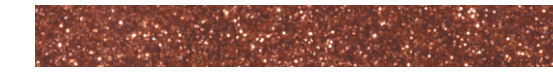
315 Burgundy



318 Black



319 Olive Green



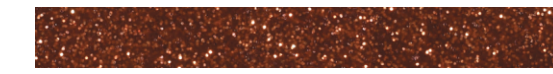
323 Sierra Sunrise



324 Quarry Red



326 Buff



327 Canyon Red



334 Blue