



J SAI INTERNATIONAL
making experts accessible

Dyes, Pigments and Intermediates



Quality that
you never forget

jsaiinternational90@gmail.com

With the extensive experience, we offer you quality products and enhanced services that exceeds your expectations.

pigments for Plastics



J SAI INTERNATIONAL
—making exports smoothly—



J SAI INTERNATIONAL
—making exports smoothly—

Pigments for Plastics

Technical Information

	Product Code	Color Index Name	Chemistry	Application						Properties				
				Polyolefins	PVC & PVC Leather	Engineering Plastic	Nylon 6	PBT / PET	PP Fibre	Light Fastness Full Tone/Tint	Weather Fastness Full Tone/Tint	Heat Resistance in HDPE (°C)	Bleeding in PVC - P	Warpage in HDPE
	Yellow 114	PY 62	Monoazo	●	●				●	7/6-7	-	250	5	Low
	Yellow 2903K	PY 151	Benzimidazolone	●	●	○			●	8/7-8	3/-	290	5	-
	Yellow 2909	PY 180	Benzimidazolone	●	●	●			●	6-7/6-7	-	290	5	Low
	Yellow 132K	PY 191	Monoazo	●	●	●			●	7/6-7	-	300	5	Low
	Yellow 2939	PY 139	Isoindoline	●	●				●	8/7	-	240	5	Low
	Yellow 2925K	PY 110	Isoindolinone	●	●	●			●	8/7-8	4-5/4	300	5	-
	Yellow 2927	PY 110	Isoindolinone	●	●	●			●	8/7-8	4-5/4	300	5	-
	Orange 2918	PO 64	Benzimidazolone	●	●	●			●	8/7-8	3-4/-	300	5	Low
	Orange 2917	PO 64	Benzimidazolone	●	●	●			●	8/7-8	3-4/-	300	5	Low
	Red 5016	PR 53:1	Monoazo-Ba-Lake	●	●	○			●	4-5/2-3	-	270	4-5	-
	Red 507K	PR 53:1	Monoazo-Ba-Lake	●	●	○				4-5/2-3	-	260	4-5	-
	Red 570	PR 48:3	Monoazo-Sr-Lake	●	●				●	6-7/5	-	240	4-5	Low
	Red 2964K	PR 170	Naphthol	●	○				●	8/7	3/-	270	2	Low
	Red 2963K	PR 170	Naphthol	●	○				○	8/7	3/-	260	2	Low
	Red 2967K	PR 170	Naphthol	●	○				○	8/7	-	250	2	Low
	Red 554	PR 48:2	Monoazo-Ca-Lake	●	●				●	7/5-6	-	240	4-5	Low
	Red 564	PR 48:2	Monoazo-Ca-Lake	●	●				●	7/5-6	-	240	4-5	Low
	Red 2985	PV 19	Quinacridone	●	●	●			○	8/7-8	4-5/4	300	5	Low
	Red 2953K	PR 264	DPP	●	●	○			○	7-8/7-8	4-5/3	300	5	-
	Red 635	PR 57:1	Monoazo-Ca-Lake	●	●				●	6-7/4	-	240	4-5	-
	Pink 2991	PR 122	Quinacridone	●	●	●	○	●	●	8/8	4-5/4	300	5	Low
	Blue 2764	PB 15:1	Phthalocyanine	●	●	●	○	○	●	8/8	5/5	300	4	-
	Blue 2789	PB 15:3	Phthalocyanine	●	●	●	●	●	●	8/8	5/5	300	5	-
	Green 2730K	PG 7	Phthalocyanine	●	●	●	●	●	●	8/8	5/5	300	5	-

● Recommended ○ Potential use

Note:

Light fastness is assessed on 1-8 Blue Wool Scale where 1=Poor & 8=Excellent.

Weather fastness is assessed on 1-5 Grey Scale where 1=Poor & 5= Excellent. All data is based on internal testing and does not guarantee specific properties or performance. Samples are available for customer testing on request. The quality of our product is guaranteed under our General Conditions of sale.

Resistance to heat tested in HDPE polymer at 1/3 standard depth of pigment with 1.00% Titanium dioxide.

Bleeding in PVC-P Passed on 1-5 Grey Scale where 5= No Bleeding & 1=Heavy Bleeding

Color Reproduction: For technical reasons connected with color reproduction, the colors shown may not exactly match the pigment colors and do not represent a particular finish. Full shades are reproduced with 0.2% pigment loading. Tint shades are reproduced with a ratio of Pigment: TiO₂ = 1:10 in PP Polymer.

Disclaimer: The information included here is based on the reliable data generated by our laboratories. Since the Performance of a pigment also depends on the additives and polymers used, we recommend that customers should test the suitability of the pigment for their end application. However, if we are provided with testing methods and samples, we would be glad to do the same. We will do our best to provide products of consistent quality, within the scope of the conditions of sale and delivery. Should, in spite of these precautions, any liability be established, the damage, if any, will be limited to the value of the goods delivered by us and used by you.

Caution: We provided a special series of pigments to be used in cosmetics and food packaging materials. Only products designed for these applications should be used. We do not recommended that any of our products are used in sensitive applications which may come in contact with internal body organs or body fluids.

Pigments for Plastics



Yellow 114 PY62



Yellow 2903K PY151



Yellow 2909 PY180



Yellow 132K PY191



Yellow 2939 PY139



Yellow 2925K PY110



Yellow 2927 PY110



Orange 2918 P064

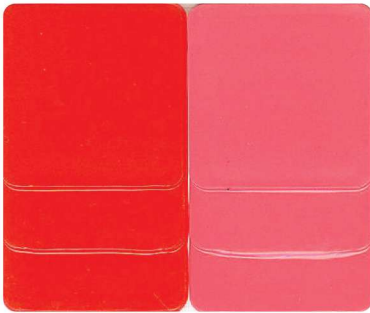
Pigments for Plastics



Orange 2917 P064



Red 5016 PR53:1



Red 507K PR53:1



Red 570 PR48:3



Red 2964K PR170



Red 2963K PR170

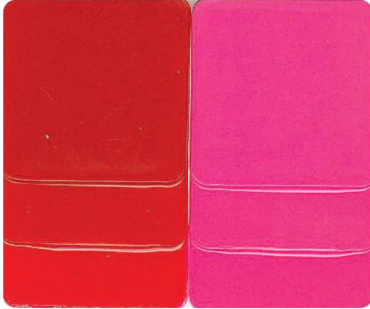


Red 2967K PR170



Red 554 PR48:2

Pigments for Plastics



Red 564 PR48:2



Red 2985 PV19



Red 2953K PR264



Red 635 PR57:1



Pink 2991 PR122



Blue 2764 PB15:1



Blue 2789 PB15:3



Green 2730K PG7

pigments for

Decorative Paints



J SAI INTERNATIONAL
—making exports smoothly—



J SAI INTERNATIONAL
—making exports smoothly—

Pigments for Decorative Paints

Technical Information

	Product Name & Code	Color Index Name	Air Drying Alkyd Paint	Water Base Decorative Paint	Opacity	Light fastness Full Tone /Tint	Weather fastness Full Tone / Tint	Fastness to Alkali	Specific Gravity	Oil Absorption
	Yellow 10G	PY 3	●	●	Semi-transparent	7/5	-	5	1.30	27
	Yellow G	PY 1	●	●	Semi-transparent	7/5	-	4-5	1.42	50
	Yellow 2903	PY 151	●	-	Opaque	8/7	5/4	3	1.50	50
	Yellow 2906	PY 154	●	●	Opaque	8/7	5/4	4-5	1.40	37
	Yellow 117	PY 74	●	●	Transparent	7/5	4/2	4	1.39	40
	Yellow 127	PY 74	●	●	Opaque	7/5	4/2	5	1.37	35
	Yellow 128C	PY 74	●	●	Transparent	6/5	4/2	5	1.40	36
	Yellow 118	PY 65	●	●	Transparent	6/5	4/2	5	1.49	40
	Yellow 134	PY 83	●	●	Opaque	7/6	4/3	5	1.40	47
	Yellow 135	PY 83	●	●	Opaque	7/5	-	3	2.04	43
	Yellow 137C	PY 83	●	●	Transparent	7/5	-	5	1.30	45
	Yellow 2925C	PY 110	●	●	Semi-transparent	8/7	5/4	5	1.40	30
	Orange 2915	PO 36	●	●	Opaque	8/7	5/4	5	2.00	44
	Red 417	PR 3	●	●	Opaque	6/4	-	5	1.45	41
	Red 415	PR 3	●	●	Opaque	6/4	-	5	1.55	40
	Red 341	PR 112	●	●	Opaque	7-8/4-5	-	4-5	1.46	40
	Red 336	PR 112	●	●	Semi-transparent	7/6	-	5	1.40	41
	Red 331	PR 112	●	●	Transparent	7/5-6	-	5	1.40	44
	Red 2963C	PR 170	●	●	Semi-transparent	7/5	4/2	5	1.25	38
	Red 2964C	PR 170	●	●	Semi-transparent	7/5	4/2	5	1.48	43
	Red 2967C	PR 170	●	●	Semi-transparent	7/5	4/2	5	1.20	36
	Red 2987	PV 19	●	●	Semi-transparent	8/7	5/4	5	1.40	67
	Pink 2998	PR 122	●	●	Transparent	8/7	5/4	5	1.34	50
	Pink 2999	PR 122	●	●	Transparent	8/7	5/4	5	1.32	55
	Pink 2997C	PR 122	●	●	Transparent	8/7	5/4	4	1.55	55
	Red Violet 2995	PV 19	●	●	Transparent	8/7	5/4	5	1.43	56
	Blue 2662	PB 15:1	●	●	Transparent	8/8	5/5	5	1.50	34
	Blue 2785	PB 15:3	●	●	Transparent	8/8	5/5	5	1.50	43
	Blue 2796	PB 15:4	●	●	Transparent	8/8	5/5	4-5	1.30	46
	Green 2727C	PG 7	●	●	Transparent	8/8	5/5	5	2.60	34

● Suitable for application ○ Potential Use

Note : The values displayed in the oil absorption column are in tolerance of ±10%

Light fastness is assessed on 1-8 Blue Wool Scale where 1= Poor & 8 = Excellent

Weather fastness is assessed on 1-5 Grey Scale where 1= Poor & 5= Excellent

All data is based on internal testing and does not guarantee specific properties or performance. Samples are available for customer testing on request. The quality of our products is guaranteed under our general conditions of sale.

Pigments for Decorative Paints



									
Yellow 10G PY3		Yellow G PY1		Yellow 2903 PY151		Yellow 2906 PY154		Yellow 117 PY74	
									
Yellow 127 PY74		Yellow 128C PY74		Yellow 118 PY65		Yellow 134 PY83		Yellow 135 PY83	
									
Yellow 137C PY83		Yellow 2925C PY110		Orange 2915 P036		Red 417 PR3		Red 415 PR3	
									
Red 341 PR112		Red 336 PR112		Red 331 PR112		Red 2963C PR170		Red 2964C PR170	
									
Red 2967C PR170		Red 2987 PV19		Pink 2998 PR122		Pink 2999 PR122		Pink 2997C PR122	
									
Red Violet 2995 PV19		Blue 2662 PB15:1		Blue 2785 PB15:3		Blue 2796 PB15:4		Green 2727C PG7	

Color Reproduction: For technical reasons connected with color reproduction, the colors shown may not exactly match the pigment colors and do not represent a particular finish.

Tint shades are reproduced with a ratio of Pigment: TiO₂ = 1:20.

Light fastness is assessed on 1-8 Blue Wool Scale where 1= Poor & 8 = Excellent

Weather fastness is assessed on 1-5 Gray Scale where 1= Poor & 5= Excellent

Pigments

Our pigments have been carefully selected to provide a palette with a wide spectrum of colors and effects for decorative paints and coatings.

They are ideal for use in universal stainers for in-plant and in-store tinting systems, solvent and water based tinters and dispersions or finished paints.

Sudarshan pigments are generally equivalent to or superior than other leading products and they offer exceptional value-in-use.



Technical Properties

- Bright and intense colors
- High tinctorial strength
- Good range of opaque and transparent pigments
- Good rheology that allows for high pigment loadings in mill bases
- Wide compatibility across solvent and water based paints
- Excellent solvent and bleed fastness
- Readily dispersible
- Exceptional light fastness

Color Combinations

The transparent colors in the range are easily combined with pearlescent pigments, in our Sumica™ range, or metallics, to produce excellent special effects which are stable to typical stir-in processes. They are suitable for interior and exterior applications, with special weather-resistant grades.

Disclaimer: The information included here is based on the most reliable data generated by our laboratories. Since the performance of a pigment also depends on the additives and polymers used, we recommend that customers should test the suitability of the pigment for their end application. However, if we are provided with testing methods and samples, we would be glad to do the same.

We will do our best to provide products of consistent quality, within the scope of the general conditions of sale and delivery. Should, in spite of these precautions, any liability be established, the damage, if any will be limited to the value of the goods delivered by us and used by you.

pigments for
Industrial & Transportation



J SAI INTERNATIONAL
—making exports smoothly—



J SAI INTERNATIONAL
—making exports smoothly—

Pigments for Industrial & Transportation

Technical Information

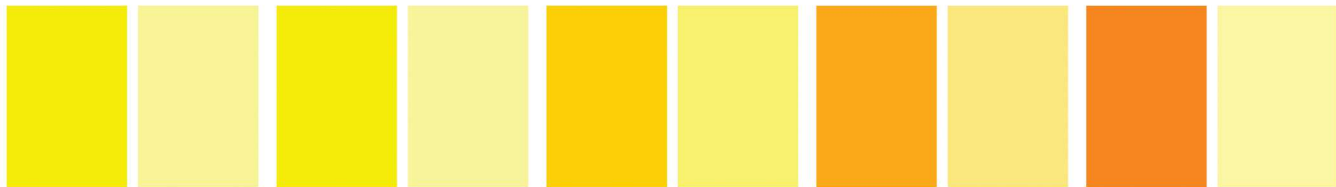
	Product Name & Code	Color Index Name	Chemistry	OEM Paints	Refinish Paints	Industrial Paints	Powder Coatings	Opacity	Light fastness Full Tone/Tint	Weather fastness Full Tone/Tint	Heat Fastness (°C)	Over Spray Fastness
	Yellow 2903	PY 151	Benzimidazolone	○	●	●	●	Opaque	8/7	5/4	180	5
	Yellow 2906	PY 154	Benzimidazolone	○	●	●	●	Opaque	8/7	5/4	160	5
	ellow 134	PY 83	Disazo			●	●	Opaque	7/6	4/3	180	4-5
	Yellow 2935	PY 139	Isoindoline	○	●	●	●	Opaque	7-8/7	4/3-4	180	5
	Yellow 2923	PY 110	Isoindolinone	●	●	●	●	Transparent	8/7	5/4	200	5
	Yellow 2925C	PY 110	Isoindolinone	●	●	●	●	Semi-transparent	8/7	5/4	180	4-5
	Orange 2919	PO 64	Benzimidazolone			●	●	Opaque	5-6/3	-	180	-
	Orange 2915C	PO 36	Benzimidazolone	○	●	●	●	Opaque	8/7	5/4	160	5
	Red 2963C	PR 170	Naphthol		●	●	●	Semi-transparent	7/5	4/2	180	4-5
	Red 2964C	PR 170	Naphthol		●	●	●	Semi-transparent	7/5	4/2	180	4-5
	Red 2967C	PR 170	Naphthol		●	●	●	Semi-transparent	7/5	4/2	180	4-5
	Red 2953C	PR 264	DPP	●	●	●	●	Transparent	8/7	5/4	180	5
	Red 2987	PV 19	Quinacridone	○	●	●	●	Semi-Transparent	8/7	5/4	180	5
	Pink 2997C	PR 122	Quinacridone	●	●	●	●	Transparent	8/7	5/4	180	5
	Red Violet 2995	PV 19	Quinacridone	●	●	●	●	Transparent	8/7	5/4	200	5
	Red Violet 2996	PV 19	Quinacridone	●	●	●	●	Transparent	8/7	5/4	200	5
	Blue 2662	PB 15:1	Phthalocyanine		○	●		Transparent	8/8	5/5	200	5
	Blue 2773	PB 15:2	Phthalocyanine	●	●	●	●	Transparent	8/8	5/5	200	5
	Blue 2789*	PB 15:3	Phthalocyanine				●	Transparent	8/8	5/5	180	5
	Blue 2796	PB 15:4	Phthalocyanine	●	●	●	●	Transparent	8/8	5/5	200	5
	Green 2727C	PG 7	Phthalocyanine	○	●	●	●	Transparent	8/8	5/5	200	5

● Suitable for application ○ Potential Use

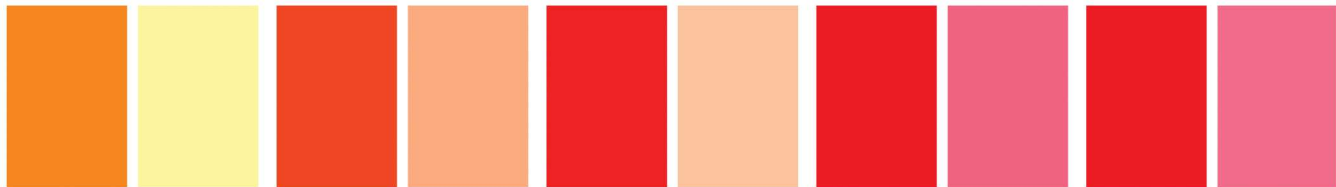
Light fastness is assessed on 1-8 Blue Wool Scale, where 1 = Poor & 8 = Excellent. Weather fastness is assessed on 1-5 Gray Scale, where 1 = Poor & 5 = Excellent. All data is based on internal testing and does not guarantee specific properties or performance. Samples are available for customer testing on request. The quality of our products is guaranteed under our general conditions of sale.

* only for powder coatings

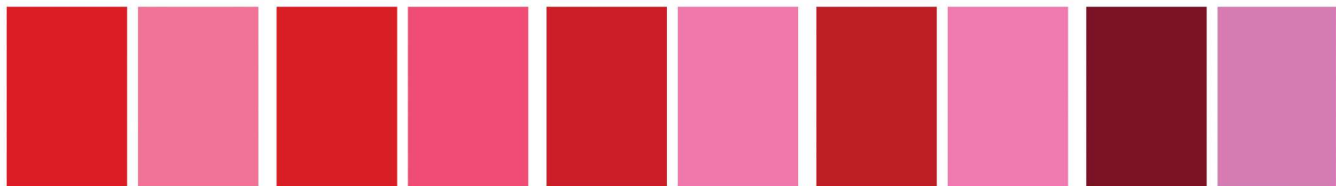
Pigments for Industrial & Transportation



Yellow 2903 PY151 Yellow 2906 PY154 Yellow 134 PY83 Yellow 2935 PY139 Yellow 2923 PY110



Yellow 2925C PY110 Orange 2919 P064 Orange 2915 P036 Red 2963C PR170 Red 2964C PR170



Red 2967C PR170 Red 2953C PR264 Red 2987 PV19 Pink 2997C PR122 Red Violet 2995 PV19



Red Violet 2996 PV19 Blue 2662 PB15:1 Blue 2773 PB15:2 Blue 2789* PB15:3 Blue 2796 PB15:4



Green 2727C PG7

Color Reproduction: For technical reasons connected with color reproduction, the colors shown may not exactly match the pigment colors and do not represent a particular finish.
Tint shades are reproduced with a ratio of Pigment: TiO₂ = 1:20

* only for powder coatings

pigments for Industrial & Transportation



Products

we brings a unique opportunity to the industrial, transportation and automotive sectors: leading products, excellent service and exceptional value.

we use 6-Sigma production techniques to ensure that the highest quality products are consistently delivered from our plant to serve the most stringent demands of the high performance coatings industry.

Affordable color without compromise.

Technical Properties

- Bright and intense colors
- High tinctorial strength
- Good range of opaque and transparent pigments
- Wide choice of economic and premium products
- Wide compatibility across reactive and non-reactive binders and curing agents
- Readily dispersible
- Excellent lightfastness and weatherfastness

Disclaimer: The information included here is based on the most reliable data generated by our laboratories. Since the performance of a pigment also depends on the additives and polymers used, we recommend that customers should test the suitability of the pigment for their end application. However, if we are provided with testing methods and samples, we would be glad to do the same.

We will do our best to provide products of consistent quality, within the scope of the general conditions of sale and delivery. Should, in spite of these precautions, any liability be established, the damage, if any will be limited to the value of the goods delivered by us and used by you.

pigments for
Liquid Inks



J SAI INTERNATIONAL
—making exports smoothly—

J SAI INTERNATIONAL
—making exports smoothly—

Pigments for Liquid Inks

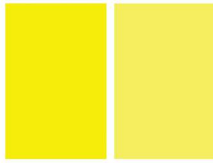
Technical Information

Product Name & Code		Color Index Name	NC-PU Inks	Water base Ink	Opacity	Light fastness Full Tone/ Tint	Oil Absorption
	Yellow 182	PY 14	●	—	Opaque	5/3	31 ± 10%
	Yellow 169	PY 13	—	●	Semi Transparent	6/5-6	52 ± 10%
	Yellow 195	PY 13	●	—	Transparent	5-6/5	52 ± 10%
	Orange 211D	PO 34	—	●	Transparent	6-7/5-6	56 ± 5%
	Red 312	PR 2	—	●	Semi Transparent	6/4	38 ± 10%
	Red 314	PR 2	—	●	Semi Transparent	6/4	38 ± 10%
	Red 604	PR 57:1	—	●	Semi Transparent	5-6/4	62 ± 5%
	Red 2973	PR 146	●	—	Transparent	6/5	57 ± 5%
	Blue 2786D	PB 15:3	—	●	Semi Transparent	8/8	40 ₊ ±10%
	Blue 2779D	PB 15:3	●	—	Semi Transparent	8/8	40 ₊ ±10%
	Blue 2791D	PB 15:4	●	—	Semi Transparent	8/8	38 ₊ ±10%
	Blue 2792D	PB 15:4	●	—	Semi Transparent	8/8	38 ₊ ±10%
	Green 2727	PG 7	—	●	Semi Transparent	8/8	30 ₊ ±10%

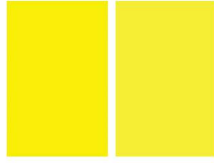
- Suitable for application
- Potential use for application

Light fastness is assessed on 1-8 Blue Wool Scale where 1= Poor & 8 = Excellent.
All data is based on internal testing and does not guarantee specific properties or performance. Samples are available for customer testing on request.
The quality of our products is guaranteed under our General Conditions of Sale.

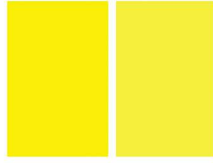
Pigments for Liquid Inks



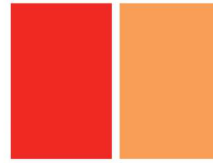
PY 14 Yellow 182



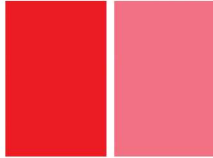
PY 13 Yellow 169



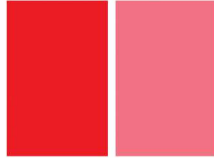
PY 13 Yellow 195



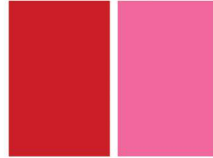
PO 34 Orange 211D



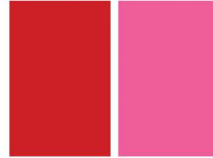
PR 2 Red 312



PR 2 Red 314



PR 57:1 Red 604



PR 146 Red 2973



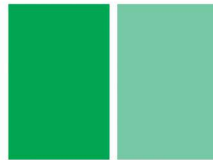
PB 15:3 Blue 2779D



PB 15:4 Blue 2791D



PB 15:4 Blue 2792D



PG 7 Green 2727

Disclaimer : The information included here is based on the reliable data generated by our laboratories. Since the Performance of a pigment also depends on the additives and polymers used, we recommend that customers should test the suitability of the pigment for their end application. However, if we are provided with testing methods and samples, we would be glad to do the same.

Caution: We provided a special series of pigments to be used in cosmetics and food packaging materials. Only products designed for these applications should be used. We do not recommend that any of our products are used in sensitive applications which may come in contact with internal body organs or body fluids.

Color Reproduction : For technical reasons connected with color reproduction, the colors shown may not exactly match the pigment colors and do not represent a particular finish.

Our comprehensive color range of organic cyan, magenta and yellow pigments for liquid inks offers high quality and consistency at an affordable price, ideal for:

- Flexo
- Gravure



We support ink manufacturers with excellent technical service, in-situ support and customised products - a partnership approach, providing solutions that make sense.

Publication, Commercial Printing and Packaging Inks

Our complete range of high quality classical azos and phthalocyanines are equivalent or superior to the leading industry standards and are manufactured within tightly-controlled specifications.



Technical Properties

- Exceptional range of vibrant opaque, translucent and transparent colors
- Easy dispersion
- Good range of light fastness and color permanence for exterior conditions
- Excellent performance in low viscosity inks, demonstrating superior rheology control to many industry standard grades
- Good range of heat-stable products that withstand the drying conditions used with water-based inks
- Excellent solvent resistance
- Stable to reactive resins and polymer and suitable for PA, vinyl and NC inks

pigments for
Offset inks



J SAI INTERNATIONAL
—making exports smoothly—



J SAI INTERNATIONAL
—making exports smoothly—

Pigments for Offset inks



Technical Information

Product Name & Code	CI Name	Opacity	Oil Absorption	Bulk density (g/ml)	Acid resistance	Alkali resistance	Soap fastness	Applications			
								Offset inks	UV offset	Metal deco Inks	Screen inks
Yellow 128C	PY 74	Transparent	27	0.60	4-5	4-5	4	●			●
Yellow 150	PY 12	Opaque	46	0.30	3	3	5	●			●
Yellow 143	PY 12	Semi-transparent	53	0.19	5	5	5	●			●
Yellow 192	PY 174	Semi-transparent	31	0.39	5	2-3	5	●	●	●	●
Yellow 169	PY 13	Semi-transparent	52	0.32	4	4	5	●	●		●
Orange 203D	PO 13	Semi-transparent	42	0.30	3-4	3-4	4	●			●
Orange 211D	PO 34	Transparent	56	0.30	4-5	4-5	5	●			●
Red 511	PR 53:1	Semi-transparent	48	0.40	3-4	4-5	1	●	●	●	●
Red 312	PR 2	Transparent	38	0.25	5	4-5	3	●	●		●
Red 314	PR 2	Transparent	55	0.24	3-4	3-4	3	●	●		●
Red 623	PR 57:1	Transparent	63	0.19	1-2	1-2	1	●	●		●
Red 626	PR 57:1	Transparent	65	0.35	1	3	1	●			●
Red 2973	PR 146	Transparent	57	0.23	5	5	5	●	●		●
Blue 2661D	PB 15:1	Transparent	38	0.41	5	5	5	●		●	●
Blue 2780D	PB 15:3	Transparent	34	0.35	5	5	5	●		●	●
Green 2727	PG 7	Transparent	30	0.42	5	5	5	●		●	●

● Suitable for application

Note:

The Soap fastness is assessed on 1- 5 Grey scale, where 1=’Poor’ and 5=’Excellent’
The acid & alkali resistance is tested using pigment powder & the visual rating is given on 1- 5 Grey scale, where 1=’Poor’ and 5=’Excellent’

The values displayed in the Oil absorption are in tolerance of ± 10% & Bulk density values are in tolerance of ± 0.1

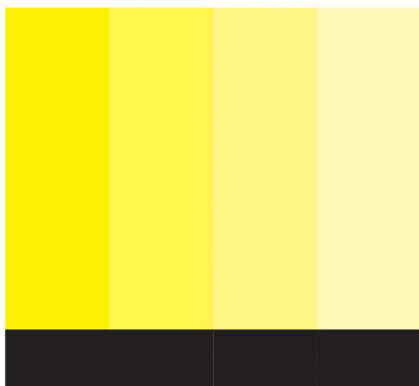
Disclaimer : The information included here is based on the most reliable data generated by our laboratories. Since the performance of a pigment also depends on the additives and polymers used, we recommend that customers should test the suitability of the pigment for their end application. However, if we are provided with testing methods and samples, we would be glad to do the same. We will do our best to provide a product of consistent quality, within the scope of the general conditions of sale and delivery. Should, in spite of these precautions, any liability be established, the damage, if any will be limited to the value of the goods delivered by us and used by you.

Caution : We do not recommend that any of our products are used in sensitive applications which may come in contact with internal body organs or body fluids.

Pigments for Offset inks

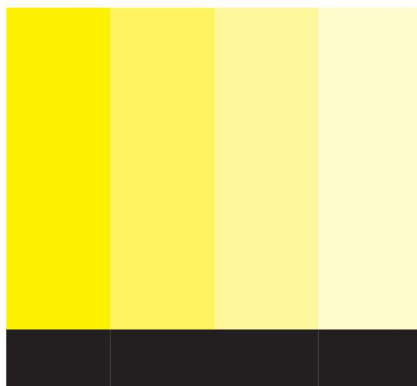


100% 75% 50% 25%



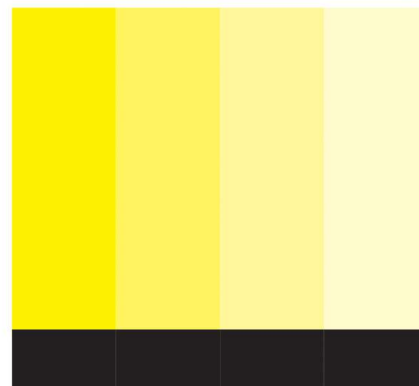
Yellow 128C PY74

100% 75% 50% 25%

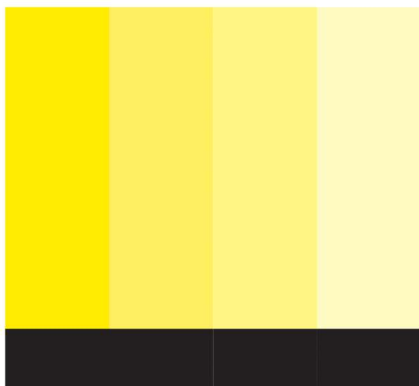


Yellow 150 PY12

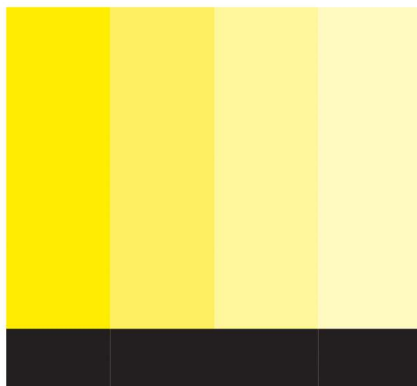
100% 75% 50% 25%



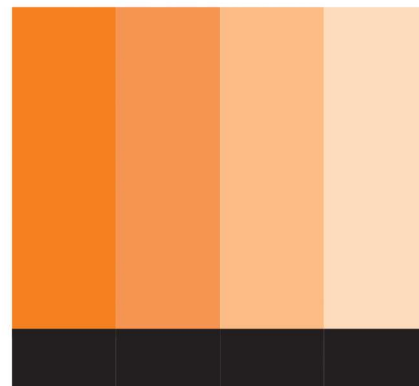
Yellow 143 PY12



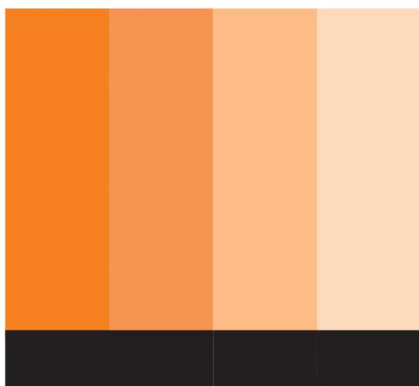
Yellow 192 PY174



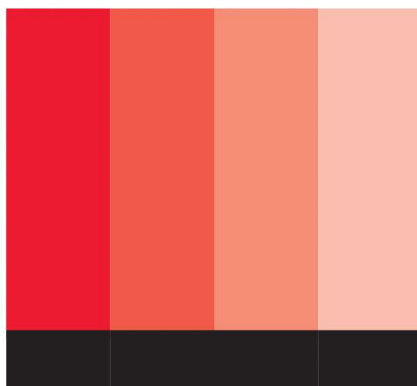
Yellow 169 PY13



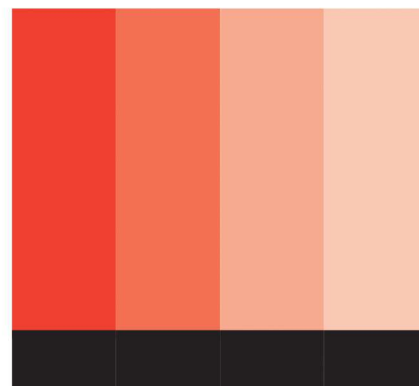
Orange 203D P013



Orange 211D P034



Red 511 PR 53:1

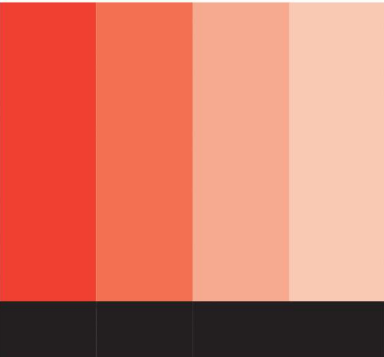


Red 312 PR2

Pigments for Offset inks

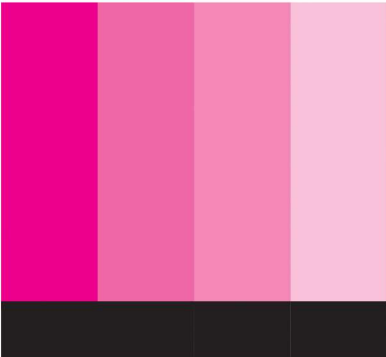


100% 75% 50% 25%



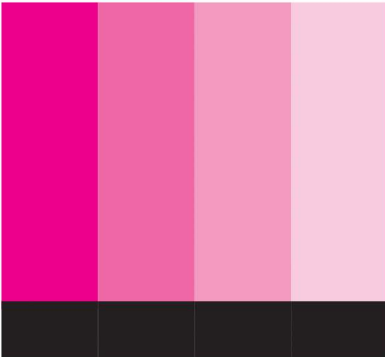
Red 314 PR2

100% 75% 50% 25%

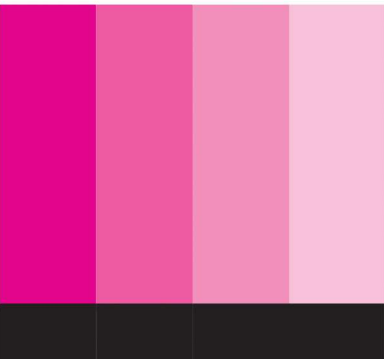


Red 623 PR 57:1

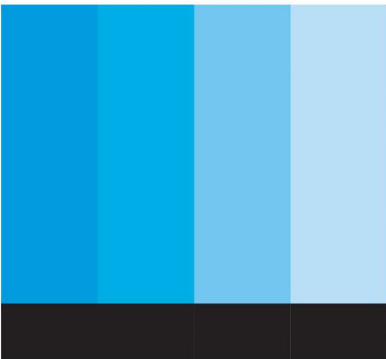
100% 75% 50% 25%



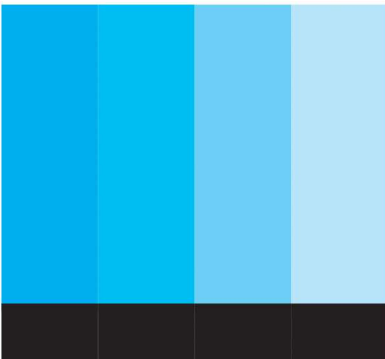
Red 626 PR 57:1



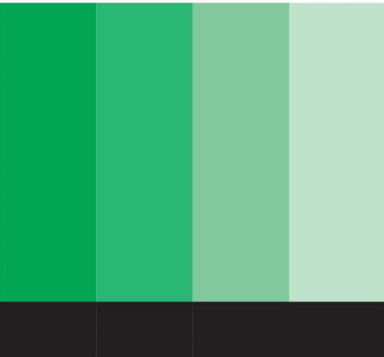
Red 2973 PR146



Blue 2661D PB 15:1



Blue 2780D PB 15:3



Green 2727 PG7

Color Reproduction

For technical reasons connected with color reproduction, the colors shown may not exactly match the pigment colors and do not represent a particular finish.