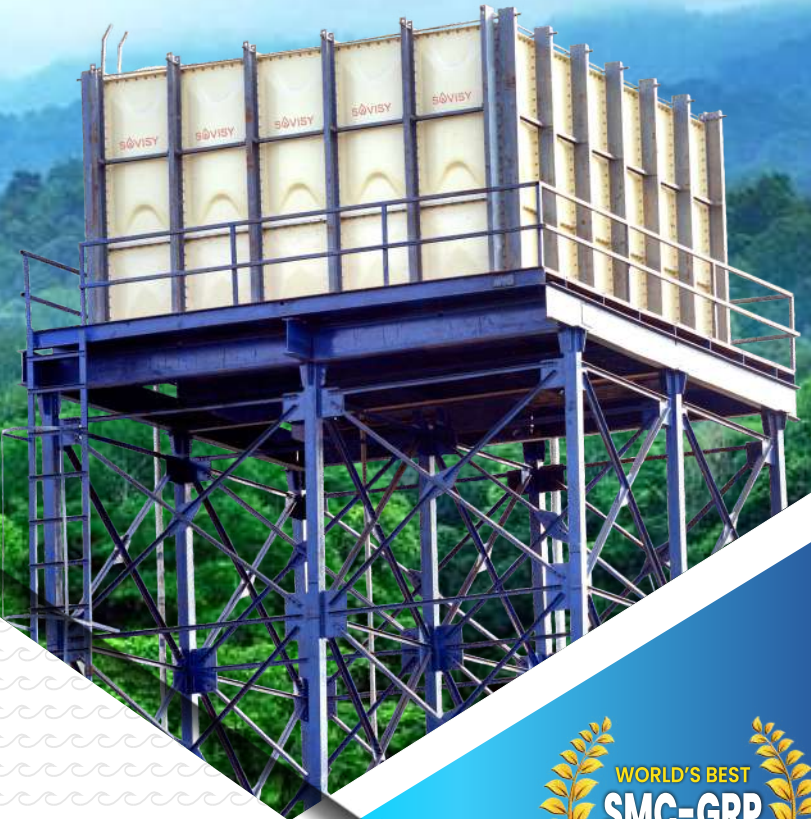


Clean Water Begins with



**WORLD'S BEST  
SMC/GRP PANEL TANKS**



**The Highest Quality,  
Pioneer Manufacturing  
and Installation are  
Spirit of**



**WORLD'S FIRST GRP SKIN INSULATED TANKS**

**CERTIFICATION**



Fire and Security  
Association of India



**25 Years Experience in  
Water Storage Solutions**



**15 Years Experience in  
GRP/SMC Panel Tank**

**Toll Free 1800-891-2050**

**info@sovisy.com**

**www.sovisy.com**

# Empowering Lives, Sustaining Futures: SOVISY'S Enduring Commitment

## SOVISY's 25-Year Legacy in Innovative Water Storage Solutions

SOVISY started journey with experience of more than 25 years and in between threw hat in arena of GRP/SMC Panel tank thus acquired enough expertise bagged in this field too. We used to design and provide a simple innovative SMC / GRP Panels in modular and flexible pattern with global certification. We did have not compromise with quality and reliability for better sustainability. Thus insured preservation of water to the highest degree of purity.

We have ensure the latent shortcomings of thus traditional storage systems for better sustainability, such as those made of Plastic, concrete & steel and-eradicated menaces. Thus SOVISY Water Tanks attract world-wide fame and became the first choice of users for the purpose of conserving water. Sovisy tanks are maintenance free, thus save recurring expenditure for the users.

Our focus of world-wide marketing effort is concentrated on state-of-art technology on to store water hygienically for longer duration. We develop tanks with different sizes from 1 KL to 2500 KL and even more. Thus these tanks can be used for domestic and industrial purposes.

SOVISY Private Limited is an ISO 9001 certified company that manufactures water tanks in using the SMC-Hot Press Moulding process to the highest specification and hygienic standards.



**3000+**  
**SMC TANKS**  
**INSTALLED**  
**LAST YEAR**



### Mission

Research and Development of most modern global Technology is the keynote of our mission. We are sensitive to the needs of our customers. We devote energy with all honesty and integrity for everlasting solution to their needs. We take almost care of our suppliers, employees, technologists too.



### Vision

The Vedas, humanity's oldest script, highlight the significance of preserving water in its purest form. Clean water storage is vital for society, industry, and life itself. In the 21st century, as nations grapple with the challenge of securing clean water, Sovisy India Private Limited aligns with modern science, innovating storage solutions.





## What is **SOVISY - SMC** water tank



Customisable



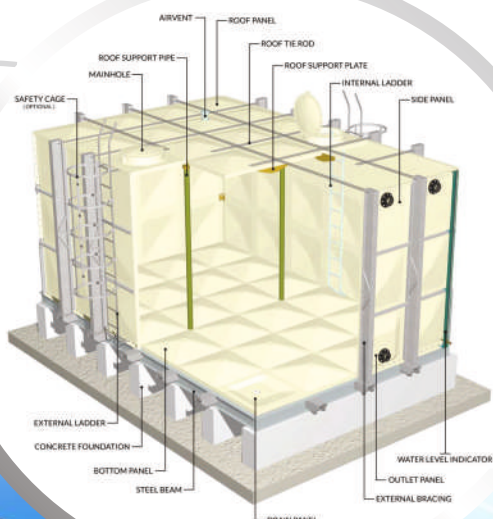
Life Time Durable



Eco-Friendly

- Sheet Molding Compound (SMC) is a mixture of unsaturated polyster resin with impregnating augmentation material, filling material and glass fiber.
- The SMC water tank body (Floor, wall and ceiling) is made of bolting type square SMC panels, which are molded under high heat & pressure.
- SOVISY SMC water tanks guarantee sanitation, excellent durability, absolute water tightness, versatile capacity design and easy installation.

**100% customizable**  
To Fit Any  
**Capacity** / To Any  
**Location**



## THE **UNBEATABLE** ADVANTAGES



- Easy to handle/ Ship.
- Easy to assemble at site in any size.
- Easy to dismantle and re-locate.
- Easy to increase and decrease the size.
- Maintain the quality of stored water for longer duration.
- Lightweight, extremely strong and durable panels.
- Easy fixing for plumbers/technicians using conventional tools.
- 100% weather resistance, water moisture & rot-proof.
- 100% safe for drinking water storage.
- Ideal for storing water from sub-zero to extremely hot climates.
- Proven life, over 50 years even in the worst climates of the world.
- Water storage and transportation in the dry lands.
- Ideal for chemical, pharmaceutical and corrosive factory areas.

# STRENGTH & DURABILITY

## SOVISY SMC/GRP Panel Tanks

- Hydrostatic Pressure - Water pressure reinforced 4 times standard transformation rate in filled with: Less than 1% from the water tank height.
- Wind Force - Less than 60 m/sec.
- Factor of safety 6 times as prescribed by IS 14399 Code
- Earthquake Force - Stable and safe till magnitude 5.0 (>5.0, it needs additional reinforcement).
- Snow load - 60 Kg/m<sup>2</sup>, Snow fall less than 30cm.
- Illumination Rate - Less than 0.1%.
- Out-fit Force - No leakage under condition of vertical 100 Kg after installation of 100 A fitting with 70 mm span support.
- Water Quality - Tap water, well water chlorine below 50 mg/l. Seawater: application Externally can Sustain Reinforced water tank (max 4 m height).
- PH Rang will be range- 4 to 8.



Supplying and placing on position of ISI Marked SOVISY SMC panel tanks for water storage as confirming with IS 14399: 1996 and material to be confirming as per IS 4249:1967 for fire retardant, required capacity of suitable size including fixing and assembling / erecting the tank complete as per direction of engineer in-charge. The tanks to be leak proof after installation and having following specifications. Standard Non Insulated SMC Panels Hot pressed moulded UV stabilised made from Sheet Moulding Compounds (SMC) composing of glass fiber and formulation of selected resin from MENZOLIT, Germany.

### Technical Specifications "SOVISY" SMC/ GRP Non-Insulated PANEL TANK

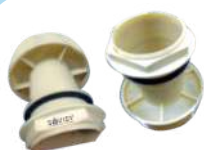
SMC PANELS : Made by Hot Pressed Process Moulded	
Bottom Panel	SMC Panel - 1 x 1 mtr. Convex Shape
Drain Panel & Outlet Panels	SMC Panel - 1 x 1 mtr. Special design for complete drain
Side Panel	SMC Panel - 1 x 2 mtr, 1 x 1 mtr, 1 x 0.5 mtr.
Ceiling Panel	SMC Panel - 1 x 1 mtr textured type for anti skidding design
Manhole	SMC Panel - 1 x 1 mtr with locable lid dia 700mm
SPECIAL ACCESSORIES	
Corner Frame	HDG Steel Vertical Corner Angle
Sealing Tape - Non Toxic	3mm thick with high level of resistance to ageing and superior recovery from compression (Make: Norseal by Saint Gobain, USA)
Steel Bolts for Panel Joints	HDG Steel Nut-Bolt - 8.8 Grade M12 x 40mm
Air Vent - Mosquito proof	Mosquito proof mesh Air Vent 100 dia.
External Ladder - 1 each	Galvanised with Fixing arrangement outside
Roof Support Pipe	FRP Internal Ceiling Panel supports
Inlet/Outlet/Overflow/Drain	G.I. Flanges with 9" Long Nipple 50NB each
External Reinforcement	ISI marked C channel at every 1-meter except in the corner of steel with anti-corrosive paint and it is tie with top external tie rods. (If tank height is more than 1 meter)
Internal Roof Supports	FRP Hollow Square section 5mm thick
Airvent	Airvent - Mosquito proof mesh insect proof - 100 mm
Water Level Indicator	Aluminum body water level indicator with clear tube type and brass nozzle ( For Tank height more than 1 Meter)
Ladders	External ladder with wall mounting arrangement. Internal ladder FRP (if tank height is more than 1 meter)
Connection fixing	Inlet, Outlet, Overflow & Drain - 50 NB (as per Table D - BS 10) G.I. Flange type with 9" long thread end Nipple



# INSULATED SMC PANEL TANK

## TECHNICAL CHARACTERISTICS

DESCRIPTION	DATA
Panel Colour	Light Ivory (RAL 1015)
Panel Strength	Hydrostatic Pressure x 4 to x 6 (Safety Factor) on maximum anticipated load.
Wind Velocity	60 m/sec
Roof Load	120 Kgf/m <sup>2</sup>
Water Temperature	65°C(Max)
Specific Gravity	1.75
Glass Content	33%
Tensile Strength	84 MPa
Bending Strength	171 Mpa
Impact Strength	80 Kgf.cm / cm <sup>2</sup>
Compressive Strength	160 Mpa
Shear Strength	100 Mpa
Barcol Hardness	64
Flame Spread (FSI)	60
Thermal Conductivity	0.036 W/m <sup>2</sup> .K
Coefficient of Overall Heat Transmission (Thermal Conductance)	0.97 W/m <sup>2</sup> .K
Thermal Expansion	1.66 x 10 <sup>-5</sup> /°C
Water Absorption	Less than 0.1%
Light Transmission	0.00%
Fire Rating Class	B / 2



**Air Vent:** Air vents are mushroom type made of uPVC 4" Dia with net of mesh no. 22. They are light, dust and insect proof.



**Insulation:** GRP panels are insulated by rigid polyurethane foam of density 40kg/m<sup>3</sup> in order to reduce the thermal transmission in extreme climates. The thickness of the insulation foam is 25mm protected by 2mm GPP cover. (Only manufactured by SOVISY in the world) All 6 sides' insulation (roof, bottom & sides) is also available to reach the lowest thermal transmission.



**Insulated Roof Man-Hole Cover:** The roof manhole panel is insulated and has a 700mm diameter opening and access door fixed with Hinges and lock device. The access door is designed to be opened at 180 hermetically closed and light, dust and insects' proof.

## Bespoke Design of Sovisy SMC Panel Tanks

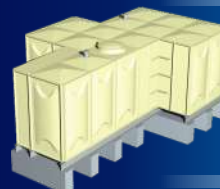
At Sovisy, we specialize in the bespoke design of SMC panel tanks, tailored to meet your specific needs and make the most out of limited or awkwardly shaped spaces. Our expert team can create tanks in a variety of configurations, allowing you to choose from a range of shapes that best fit your requirements. Whether you need a traditional square or rectangular tank, or more unique arrangements such as L, C, U, T shapes, or even more complex geometries, we have you covered.



L-Shape



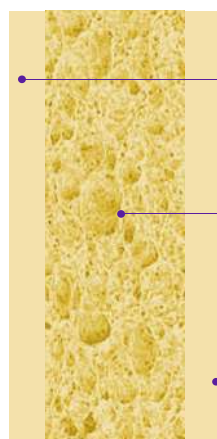
C-Shape



Irregular Shape



Square Shape



Sun-shield layer protects from harmful UV rays.

Insulated polyurethane foam in order to reduce the thermal transmission in extreme climates.

100% Food grade material which keeps water hygienic.

# We Supply Across the WORLD

SOVISOY has completed many prestigious projects for the Private, Commercial, Industrial and government sectors in the South Africa & Asian territory which include Airports, Hospitals, Laboratories, Schools, Palaces, Hotels, High Rise Buildings, Networks and Residential Connections



## MAJOR CLIENTS

### GOVERNMENT AND PUBLIC SECTOR ORGANISER



### CORPORATE CLIENTS



### AUTOMOBILE INDUSTRIES CLIENTS



### REALTY SECTOR



### HOSPITALITY AND HEALTH CARE



### AIRPORT



Nilanjana : 9382861855 / Sutapa : 7863991096

11-15 D.K. INDUSTRIAL ESTATE II, BLOCK NO 70, CHHATRAL, DIST- GANDHINAGAR, GUJARAT- 382729